

# Anti-LDL Receptor Related Protein 1 Rabbit Monoclonal Antibody



**Catalog #: 4674**

## Aliases

LRP1; LDL Receptor Related Protein 1; APOER; Alpha-2-Macroglobulin Receptor; IGFBP3R1; IGFBP-3R; LRP1A; CD91; A2MR; LRP; APR; Prolow-Density Lipoprotein Receptor-Related Protein 1; Low Density Lipoprotein Receptor-Related Protein 1; Apolipoprotein E Receptor; Transforming Growth Factor- $\beta$  Receptor Type V; TbetaR-V/LRP-1/IGFBP-3 Receptor; Type V Tgf-Beta Receptor; CD91 Antigen; EC 3.4.21.9; EC 1.1.1.94; IGFBP3R; TGFBR5; LRP-1; KPA

## Background

Gene Name: LRP1

NCBI Gene Entry: [4035](#)

UniProt Entry: [Q07954](#)

## Application Information

Molecular Weight: Predicted, 505 kDa; observed, 85 kDa

Clonality: Rabbit monoclonal antibody

Clone ID: 24GB12380

Species Reactivity: Human, mouse, rat

Applications Tested: Western blotting (WB), flow cytometry (FCM), immunocytochemistry (IC)

## Immunogen

A synthesized peptide derived from human LRP1

## Isotype

Rabbit IgG

## Storage Buffer

Supplied in PBS (pH 7.4) containing 50% glycerol, and 0.02% sodium azide.

## Storage

Store at -20 °C for one year.

## Recommended Dilutions

Western Blotting (WB): 1:1,000-1:5,000

Flow Cytometry (FCM): 1:2,000

Immunocytochemistry (IC): 1:100-1:1,000

---

### SUPPORT

SUPPORT@GENUINBIOTECH.COM  
TEL: +1-540-855-7041

### ORDERS

SALES@GENUINBIOTECH.COM  
FAX: +1-540-855-7041

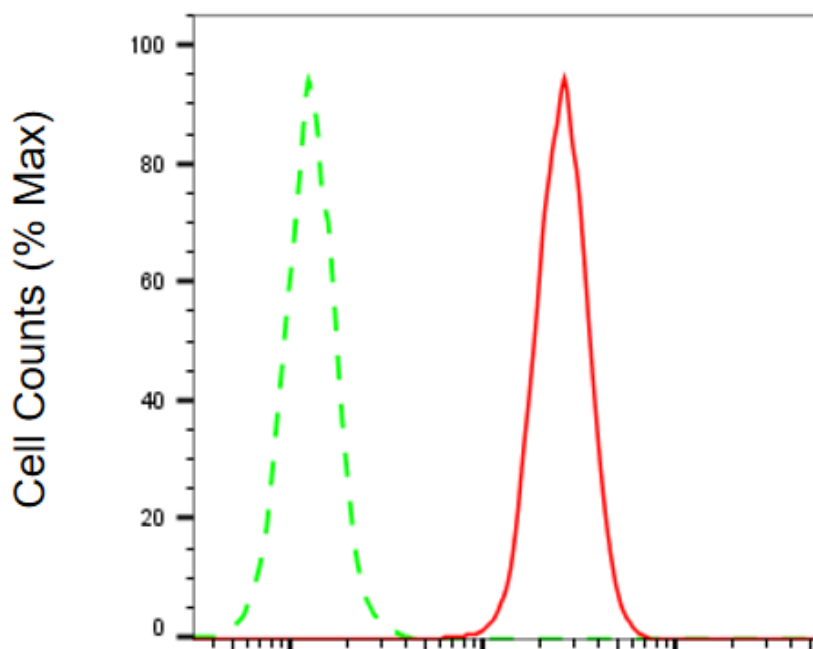
[WWW.GENUINBIOTECH.COM](http://WWW.GENUINBIOTECH.COM)

# Anti-LDL Receptor Related Protein 1 Rabbit Monoclonal Antibody

PAGE 2

**Note:** This product is for research use only.

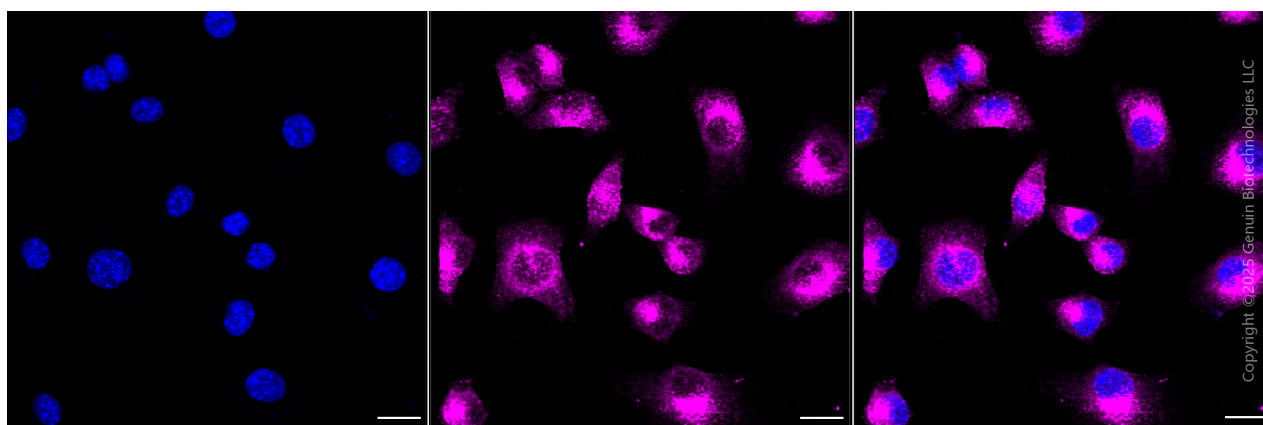
## Validation Data



Copyright ©2025 Genuin Biotechnologies LLC

### LDL receptor related protein 1-Alexa Fluor® 647

Flow cytometric analysis of LDL receptor related protein 1 expression in C2C12 cells using anti-LDL receptor related protein 1 antibody (Cat#4674, 1:2,000). Green, isotype control; red, LDL receptor related protein 1.



Copyright ©2025 Genuin Biotechnologies LLC

Immunocytochemical staining of C2C12 cells with anti-LDL receptor related protein 1 antibody (Cat#4674, 1:1,000). Nuclei were stained blue with DAPI; LDL receptor related protein 1 was stained magenta with Alexa Fluor® 647. Images were taken using Leica stellaris 5. Protein abundance based on laser Intensity and smart gain: Medium. Scale bar, 20  $\mu$ m.

## SUPPORT

SUPPORT@GENUINBIOTECH.COM  
TEL: +1-540-855-7041

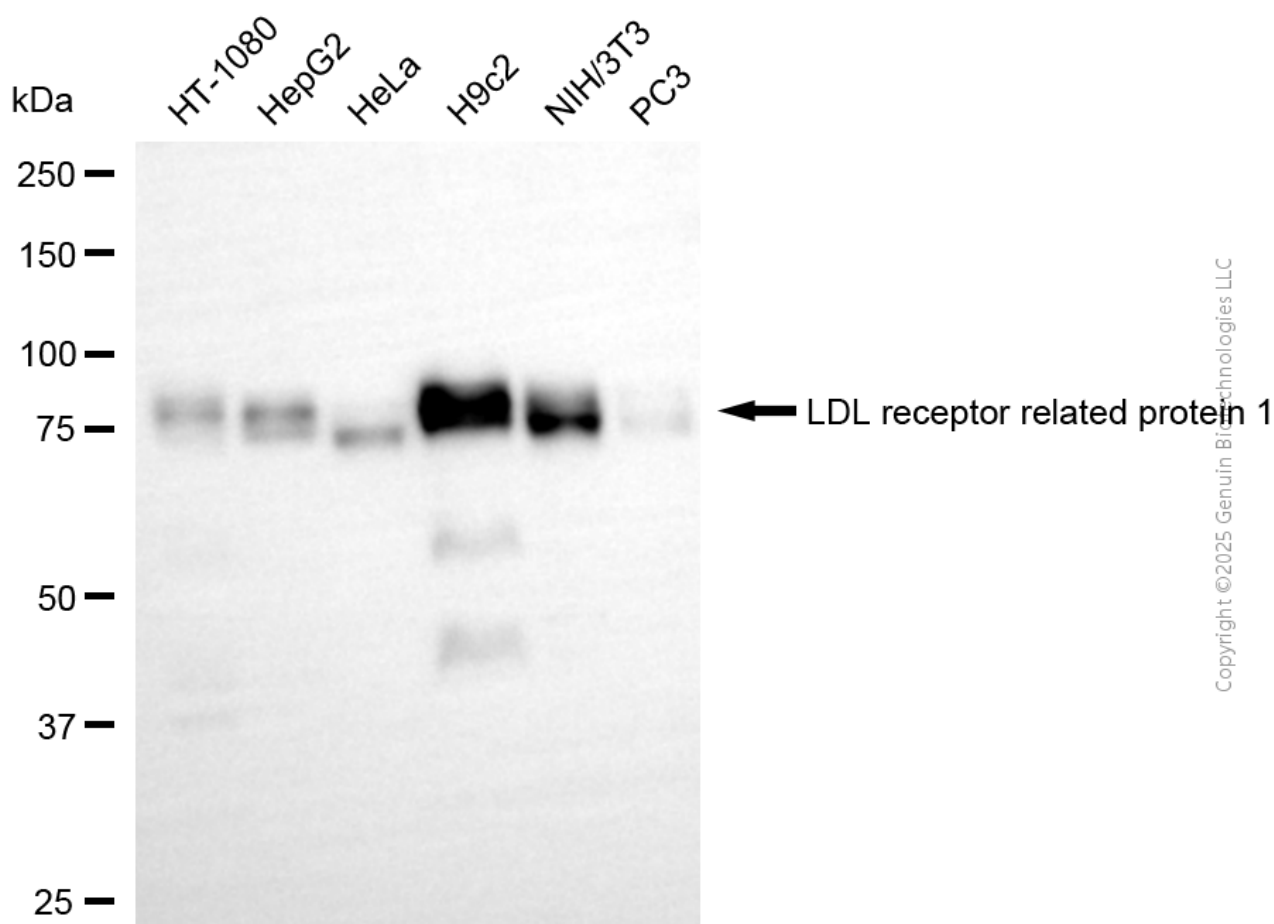
## ORDERS

SALES@GENUINBIOTECH.COM  
FAX: +1-540-855-7041

WWW.GENUINBIOTECH.COM

## Anti-LDL Receptor Related Protein 1 Rabbit Monoclonal Antibody

PAGE 3



Western blotting analysis using anti-LDL receptor related protein 1 antibody (Cat#4674). Total cell lysates (30 µg) from various cell lines were loaded and separated by SDS-PAGE. The blot was incubated with anti-LDL receptor related protein antibody (Cat#4674, 1:5,000) and HRP-conjugated goat anti-rabbit secondary antibody (Cat#201, 1:20,000) respectively. Image was developed using NaQ™ ECL Substrate Kit (Cat#716).

### SUPPORT

SUPPORT@GENUINBIOTECH.COM  
TEL: +1-540-855-7041

### ORDERS

SALES@GENUINBIOTECH.COM  
FAX: +1-540-855-7041

[WWW.GENUINBIOTECH.COM](http://WWW.GENUINBIOTECH.COM)