

# Anti-TANK Binding Kinase 1 Rabbit Monoclonal Antibody



**Catalog #: 4676**

## Aliases

TBK1; TANK Binding Kinase 1; NAK; Serine/Threonine-Protein Kinase TBK1; NF-Kappa-B-Activating Kinase; TANK-Binding Kinase 1; T2K; NF-KB-Activating Kinase; EC 2.7.11.1; EC 2.7.11; FTDALS4; IIAE8

## Background

Gene Name: TBK1

NCBI Gene Entry: [29110](#)

UniProt Entry: [Q9UHD2](#)

## Application Information

Molecular Weight: Predicted, 84 kDa; observed, 74 kDa

Clonality: Rabbit monoclonal antibody

Clone ID: 24GB12390

Species Reactivity: Human, mouse, rat

Applications Tested: Western blotting (WB), flow cytometry (FCM), immunocytochemistry (IC)

## Immunogen

A synthesized peptide derived from human TBK1

## Isotype

Rabbit IgG

## Storage Buffer

Supplied in PBS (pH 7.4) containing 50% glycerol, and 0.02% sodium azide.

## Storage

Store at -20 °C for one year.

## Recommended Dilutions

Western Blotting (WB): 1:1,000-1:5,000

Flow Cytometry (FCM): 1:2,000

Immunocytochemistry (IC): 1:100-1:1,000

**Note:** This product is for research use only.

---

### SUPPORT

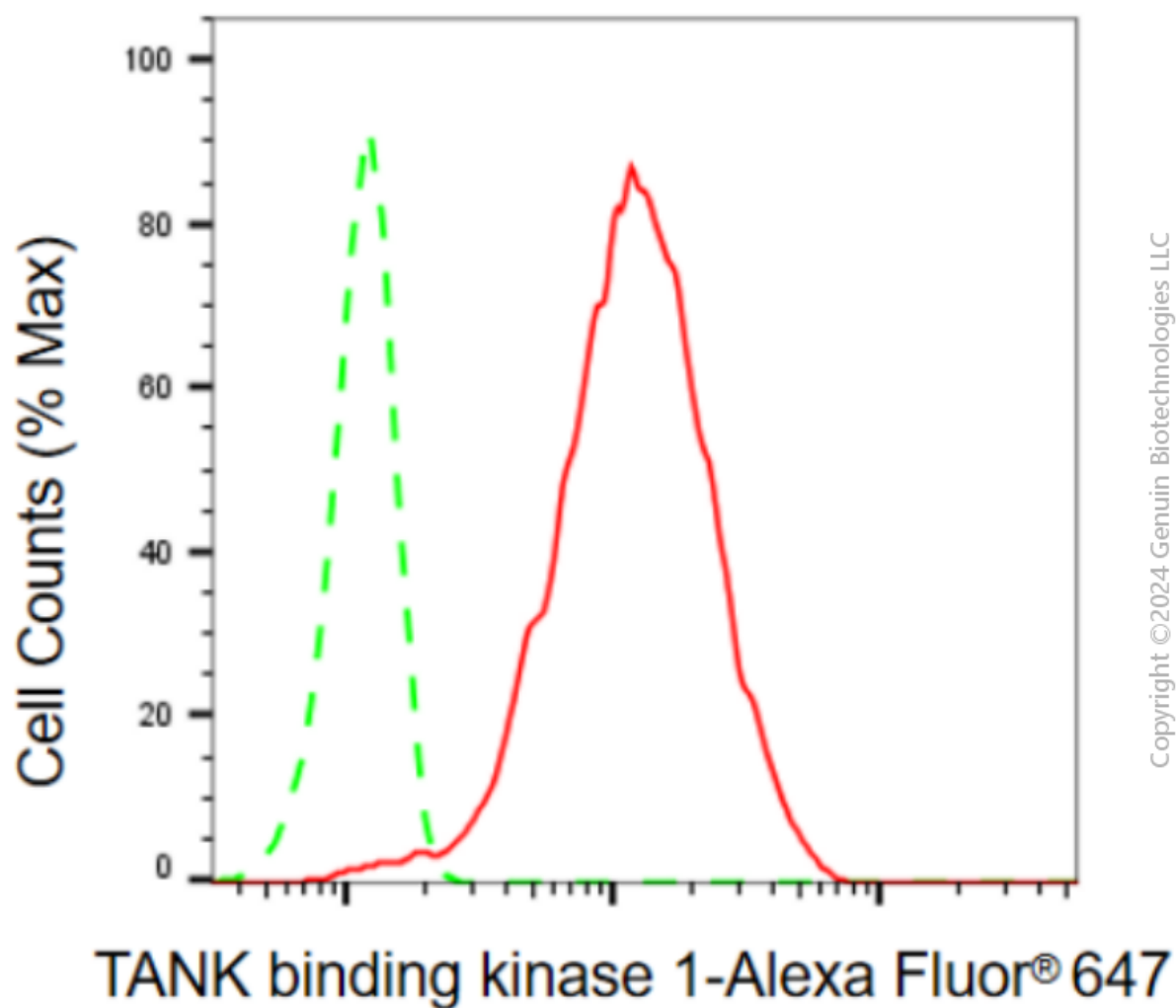
SUPPORT@GENUINBIOTECH.COM  
TEL: +1-540-855-7041

### ORDERS

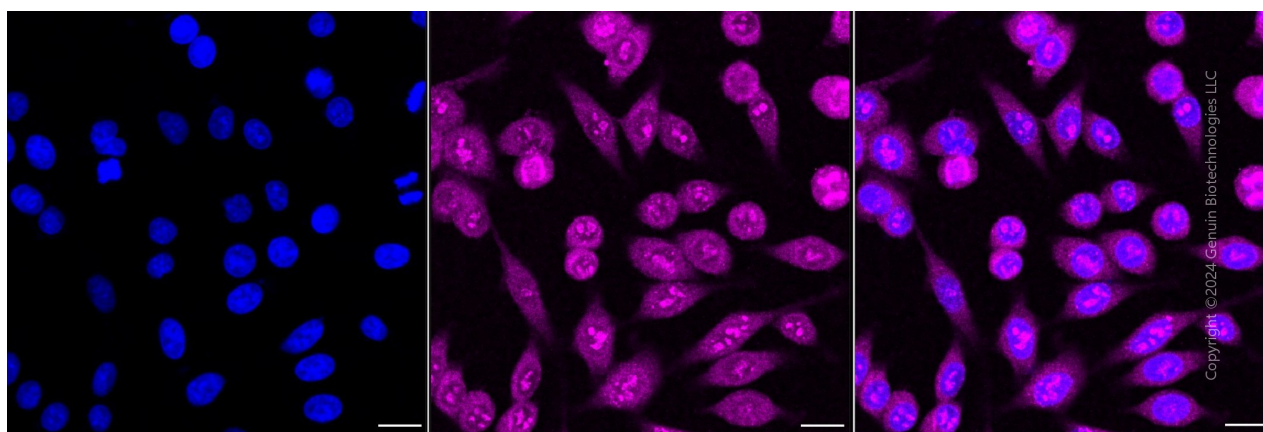
SALES@GENUINBIOTECH.COM  
FAX: +1-540-855-7041

[WWW.GENUINBIOTECH.COM](http://WWW.GENUINBIOTECH.COM)

**Validation Data**



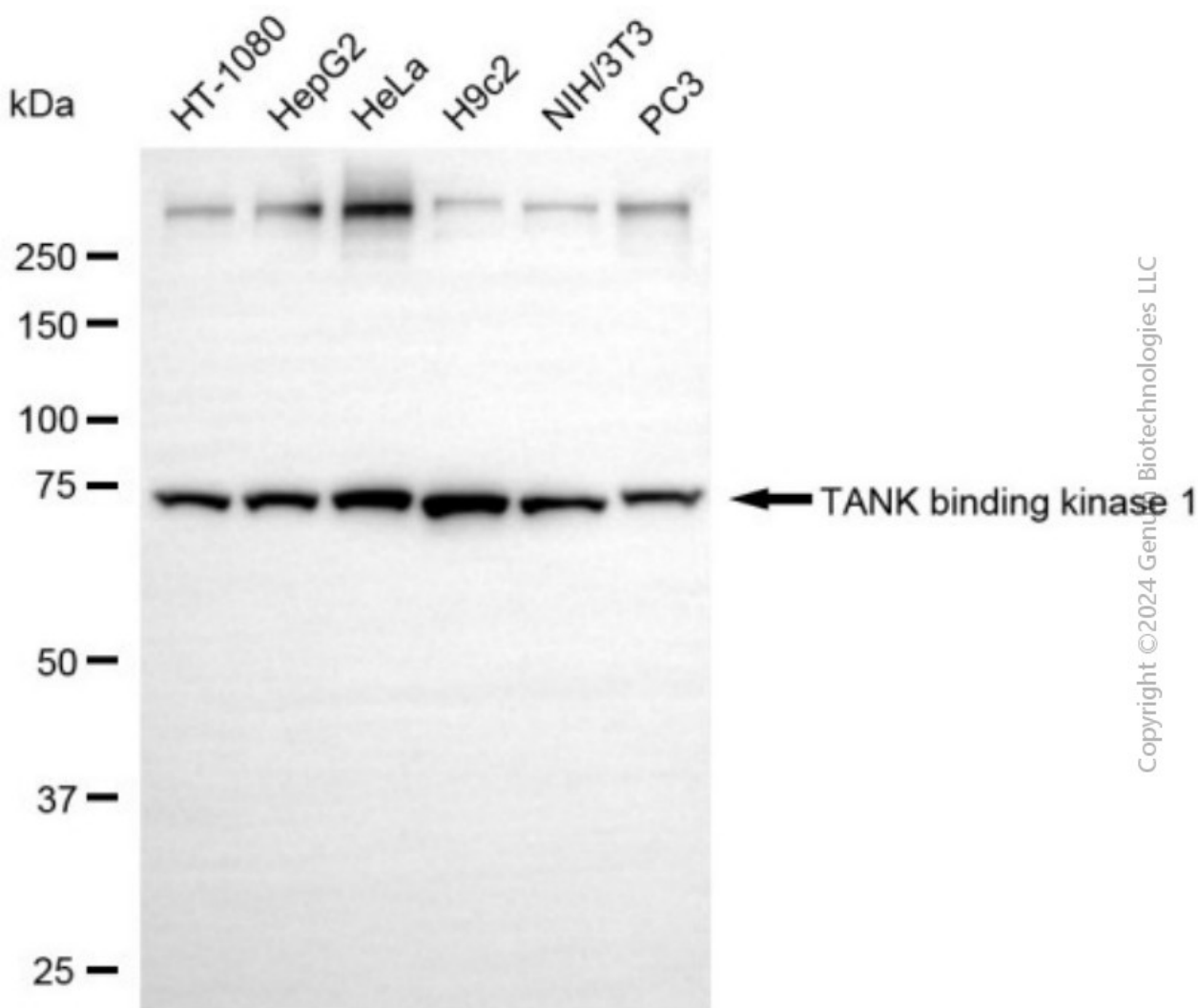
Flow cytometric analysis of TANK binding kinase 1 expression in HepG2 cells using anti-TANK binding kinase 1 antibody (Cat#4676, 1:2,000). Green, isotype control; red, TANK binding kinase 1.



## Anti-TANK Binding Kinase 1 Rabbit Monoclonal Antibody

PAGE 3

Immunocytochemical staining of HepG2 cells with anti-TANK binding kinase 1 antibody (Cat#4676, 1:1,000). Nuclei were stained blue with DAPI; TANK binding kinase 1 was stained magenta with Alexa Fluor® 647. Images were taken using Leica stellaris 5. Protein abundance based on laser Intensity and smart gain: Medium. Scale bar, 20  $\mu$ m.



Western blotting analysis using anti-TANK binding kinase 1 antibody (Cat#4676). Total cell lysates (30  $\mu$ g) from various cell lines were loaded and separated by SDS-PAGE. The blot was incubated with anti-TANK binding kinase 1 antibody (Cat#4676, 1:5,000) and HRP-conjugated goat anti-rabbit secondary antibody (Cat#201, 1:20,000) respectively. Image was developed using NaQ™ ECL Substrate Kit (Cat#716).

### SUPPORT

SUPPORT@GENUINBIOTECH.COM  
TEL: +1-540-855-7041

### ORDERS

SALES@GENUINBIOTECH.COM  
FAX: +1-540-855-7041

WWW.GENUINBIOTECH.COM