

## Catalog #: 4679

### Aliases

CHUK; Component Of Inhibitor Of Nuclear Factor Kappa B Kinase Complex; IKK-Alpha; NFKB1A; IKK1; IKKA; Inhibitor Of Nuclear Factor Kappa-B Kinase Subunit Alpha; Conserved Helix-Loop-Helix Ubiquitous Kinase; IkbKA; TCF16; Transcription Factor 16; I-Kappa-B Kinase 1; EC 2.7.11.10; IKK-1; Nuclear Factor NF-Kappa-B Inhibitor Kinase Alpha; Nuclear Factor NfKappaB Inhibitor Kinase Alpha; Ikb Kinase Alpha Subunit; I-Kappa-B Kinase-Alpha; I-Kappa-B Kinase Alpha; I-Kappa-B Kinase; IkappaB Kinase; IKK-A Kinase; EC 2.7.11; TCF-16; IKBKA; IKK-A; BPS2

### Background

Gene Name: CHUK

NCBI Gene Entry: [1147](#)

UniProt Entry: [O15111](#)

### Application Information

Molecular Weight: Predicted, 85 kDa; observed, 85 kDa

Clonality: Rabbit monoclonal antibody

Clone ID: 24GB12405

Species Reactivity: Human, rat

Applications Tested: Western blotting (WB), flow cytometry (FCM), immunocytochemistry (IC)

### Immunogen

A synthesized peptide derived from human IKK alpha

### Isotype

Rabbit IgG

### Storage Buffer

Supplied in PBS (pH 7.4) containing 50% glycerol, and 0.02% sodium azide.

### Storage

Store at -20 °C for one year.

### Recommended Dilutions

Western Blotting (WB): 1:1,000-1:5,000

Flow Cytometry (FCM): 1:2,000

---

#### SUPPORT

SUPPORT@GENUINBIOTECH.COM  
TEL: +1-540-855-7041

#### ORDERS

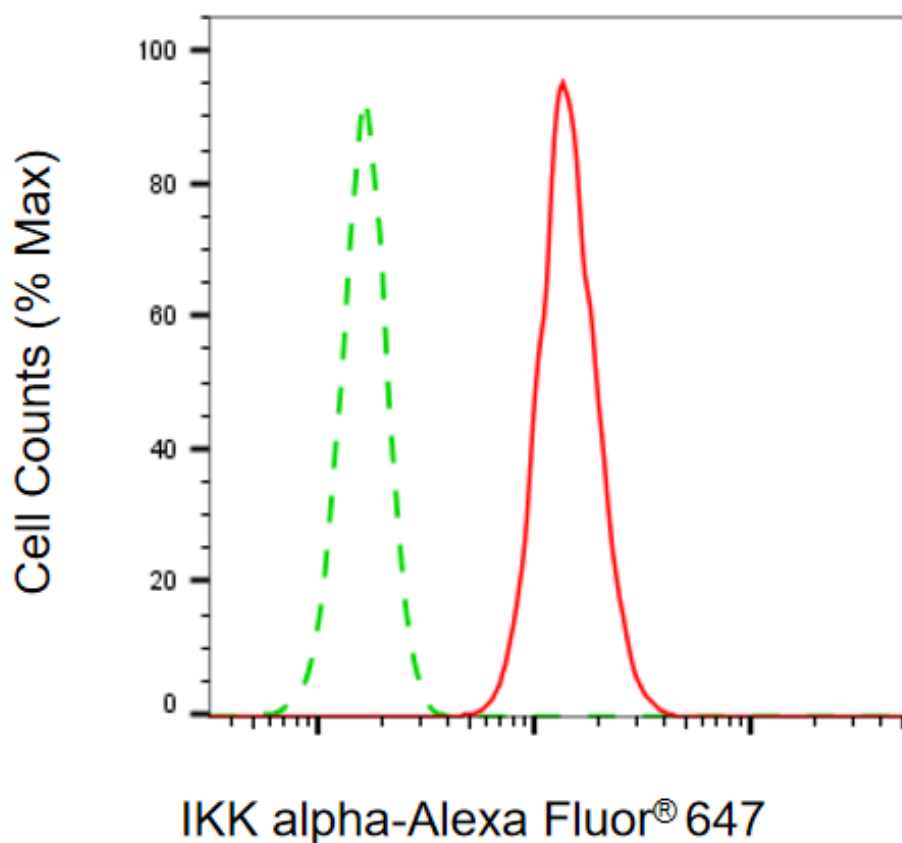
SALES@GENUINBIOTECH.COM  
FAX: +1-540-855-7041

[WWW.GENUINBIOTECH.COM](http://WWW.GENUINBIOTECH.COM)

Immunocytochemistry (IC): 1:100-1:1,000

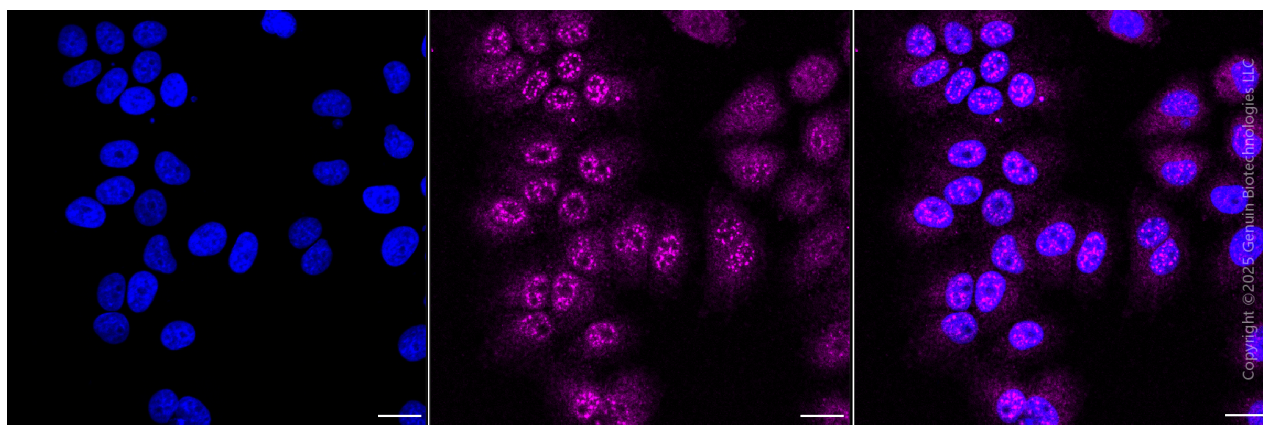
**Note:** This product is for research use only.

## Validation Data



Copyright ©2025 Genuin Biotechnologies LLC

Flow cytometric analysis of IKK alpha expression in HepG2 cells using anti-IKK alpha antibody (Cat#4679, 1:2,000). Green, isotype control; red, IKK alpha.



### SUPPORT

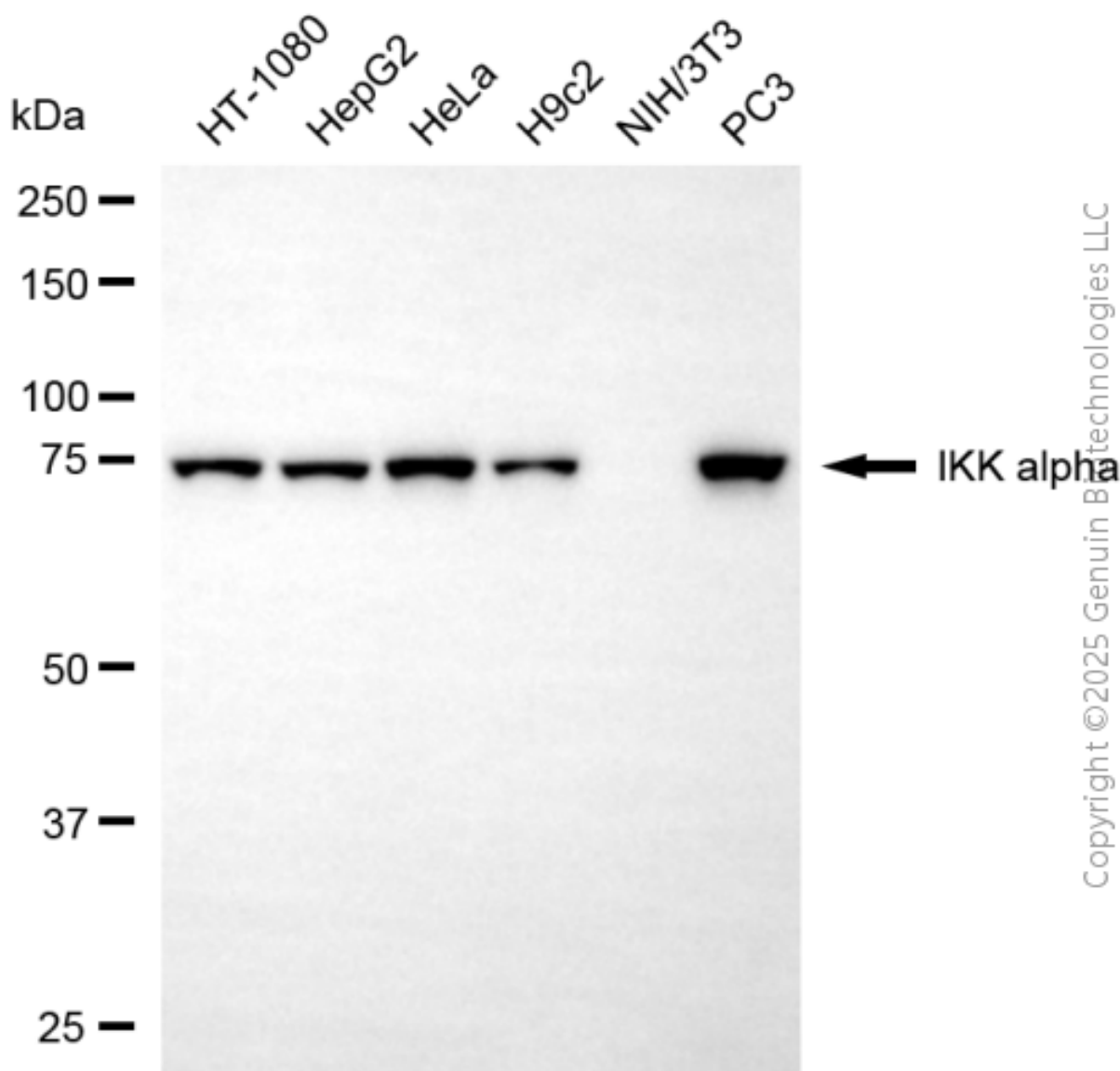
SUPPORT@GENUINBIOTECH.COM  
TEL: +1-540-855-7041

### ORDERS

SALES@GENUINBIOTECH.COM  
FAX: +1-540-855-7041

WWW.GENUINBIOTECH.COM

Immunocytochemical staining of HepG2 cells with anti-component of inhibitor of nuclear factor kappa B kinase complex antibody (Cat#4679, 1:1,000) . Nuclei were stained blue with DAPI; Component of inhibitor of nuclear factor kappa B kinase complex was stained magenta with Alexa Fluor® 647. Images were taken using Leica stellaris 5. Protein abundance based on laser Intensity and smart gain: Medium. Scale bar, 20  $\mu$ m.



Western blotting analysis using anti-IKK alpha antibody (Cat#4679). Total cell lysates (30  $\mu$ g) from various cell lines were loaded and separated by SDS-PAGE. The blot was incubated with anti-IKK alpha antibody (Cat#4679, 1:5,000) and HRP-conjugated goat anti-rabbit secondary antibody (Cat#201, 1:20,000) respectively. Image was developed using NaQ™ ECL Substrate Kit (Cat#716).

**SUPPORT**

SUPPORT@GENUINBIOTECH.COM  
TEL: +1-540-855-7041

**ORDERS**

SALES@GENUINBIOTECH.COM  
FAX: +1-540-855-7041

[WWW.GENUINBIOTECH.COM](http://WWW.GENUINBIOTECH.COM)