

Anti-GSK3 alpha/beta Rabbit Monoclonal Antibody



Catalog #: 4681

Aliases

GSK3A; Glycogen Synthase Kinase 3 Alpha; Serine/Threonine-Protein Kinase GSK3A; Glycogen Synthase Kinase-3 Alpha; EC 2.7.11.26; GSK-3 Alpha; EC 2.7.11.1; EC 2.7.11

Background

Gene Name: GSK3A

NCBI Gene Entry: [2931](#)

UniProt Entry: [P49840](#)

Application Information

Molecular Weight: Predicted, 51 kDa; observed, 51,47 kDa

Clonality: Rabbit monoclonal antibody

Clone ID: 24GB12415

Species Reactivity: Human, mouse, rat

Applications Tested: Western blotting (WB), immunocytochemistry (IC), flow cytometry(FCM)

Immunogen

A synthetic peptide of human GSK3 alpha

Isotype

Rabbit IgG

Storage Buffer

Supplied in PBS (pH 7.4) containing 50% glycerol, and 0.02% sodium azide.

Storage

Store at -20 °C for one year.

Recommended Dilutions

Western Blotting (WB): 1:1,000-1:5,000

Flow Cytometry (FCM): 1:2,000

Immunocytochemistry (IC): 1:200 - 1:1,000

Note: This product is for research use only.

Validation Data

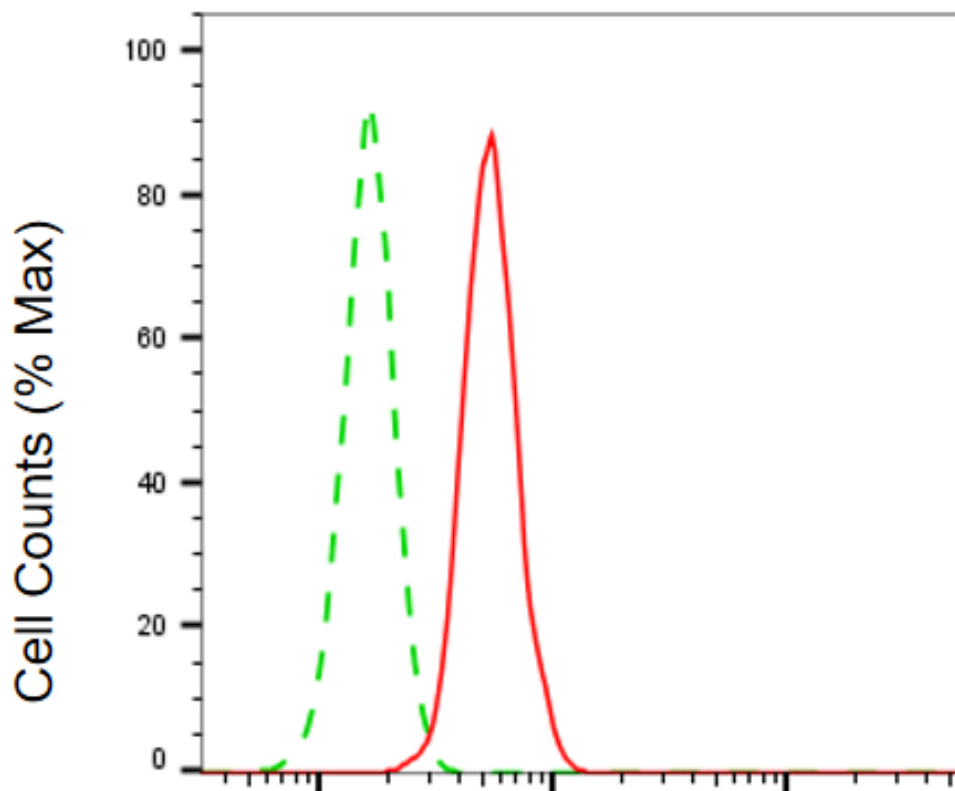
SUPPORT

SUPPORT@GENUINBIOTECH.COM
TEL: +1-540-855-7041

ORDERS

SALES@GENUINBIOTECH.COM
FAX: +1-540-855-7041

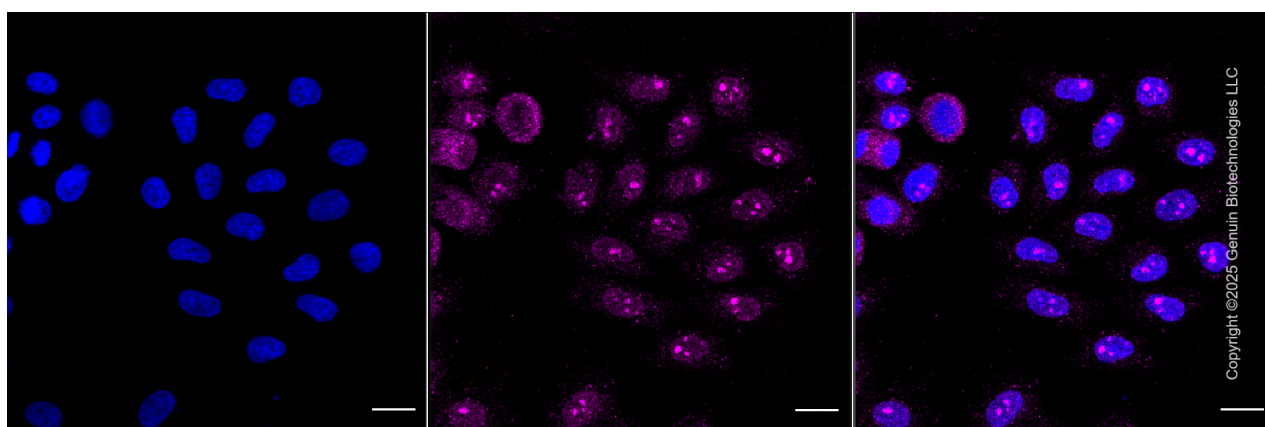
WWW.GENUINBIOTECH.COM



Copyright ©2025 Genuin Biotechnologies LLC

GSK3 alpha/beta-Alexa Fluor® 647

Flow cytometric analysis of GSK3 alpha/beta expression in HepG2 cells using anti-GSK3 alpha/beta antibody (Cat#4681, 1:2,000). Green, isotype control; red, GSK3 alpha/beta.



Copyright ©2025 Genuin Biotechnologies LLC

Immunocytochemical staining of HepG2 cells with anti-Arrestin beta 1 antibody (Cat#4681, 1:1,000). Nuclei were stained blue with DAPI; Arrestin beta 1 was stained magenta with Alexa Fluor® 647. Images were taken using Leica stellaris 5. Protein abundance based on laser Intensity and smart gain: High. Scale bar, 20 µm.

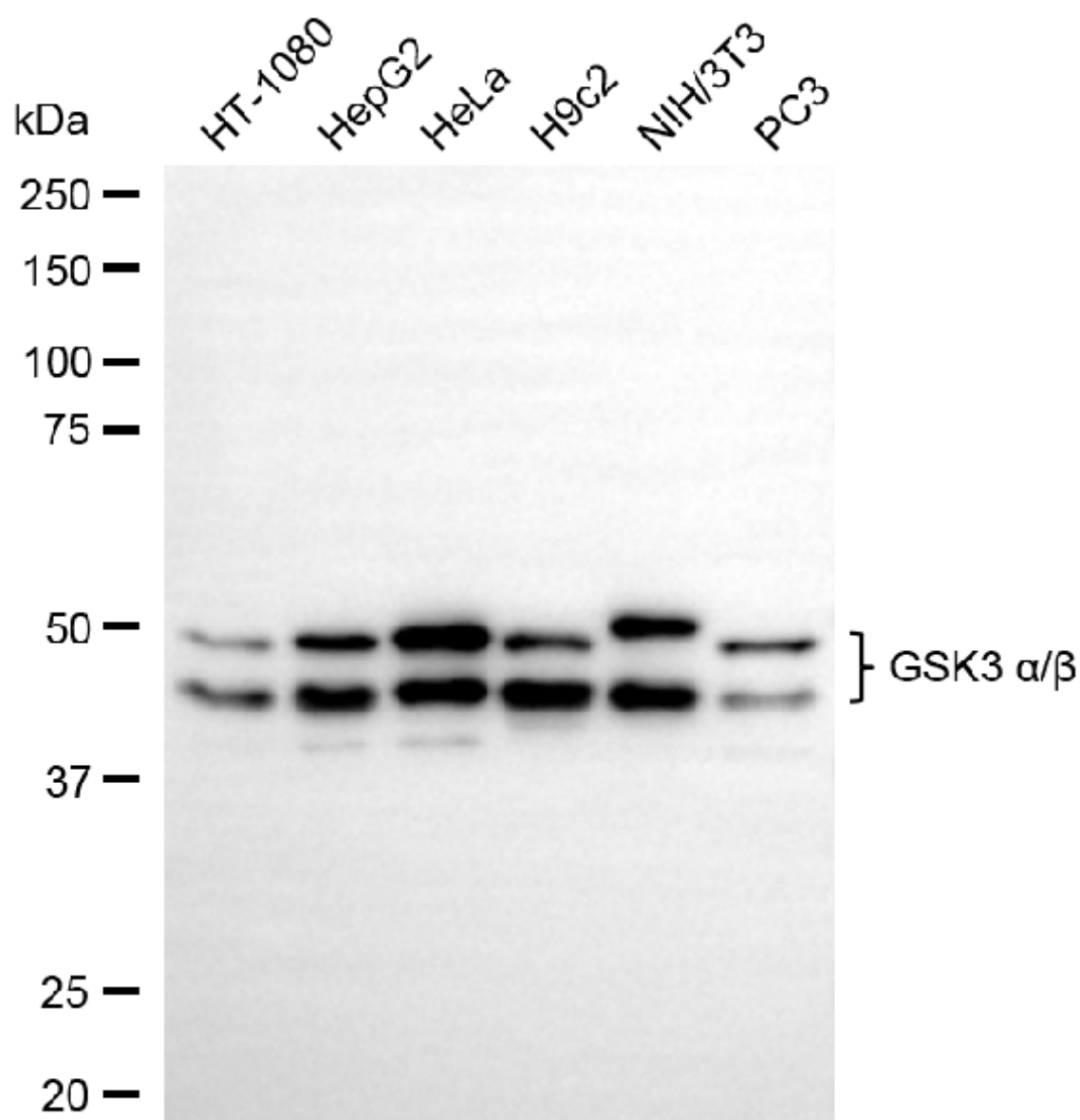
SUPPORT

SUPPORT@GENUINBIOTECH.COM
TEL: +1-540-855-7041

ORDERS

SALES@GENUINBIOTECH.COM
FAX: +1-540-855-7041

WWW.GENUINBIOTECH.COM



Copyright ©2025 Genuin Biotechnologies LLC

Western blotting analysis using anti-GSK3 alpha/beta antibody (Cat#4681). Total cell lysates (30 µg) from various cell lines were loaded and separated by SDS-PAGE. The blot was incubated with anti-GSK3 alpha/beta antibody (Cat#4681, 1:5,000) and HRP-conjugated goat anti-rabbit secondary antibody (Cat#201, 1:20,000) respectively. Image was developed using NaQ™ ECL Substrate Kit (Cat#716).