

Anti-Phospho-Presenilin 1 (Ser310) Rabbit Monoclonal Antibody



Catalog #: 4682

Aliases

PSEN1; Presenilin 1; PSNL1; PS-1; PS1; S182; FAD; AD3; Familial Alzheimer Disease; Presenilin-1; Alzheimer Disease 3; Protein S182; EC 3.4.23.-; EC 3.4.23; ACNINV3

Background

Gene Name: PSEN1

NCBI Gene Entry: [5663](#)

UniProt Entry: [P49768](#)

Application Information

Molecular Weight: Predicted, 53 kDa; observed, 22 kDa

Clonality: Rabbit monoclonal antibody

Clone ID: 24GB12420

Species Reactivity: Human

Applications Tested: Western blotting (WB), flow cytometry (FCM), immunocytochemistry (IC)

Immunogen

A synthesized peptide derived from human Phospho-Presenilin 1 (Ser310)

Isotype

Rabbit IgG

Storage Buffer

Supplied in PBS (pH 7.4) containing 50% glycerol, and 0.02% sodium azide.

Storage

Store at -20 °C for one year.

Recommended Dilutions

Western Blotting (WB): 1:1,000-1:5,000

Flow Cytometry (FCM): 1:2,000

Immunocytochemistry (IC): 1:100-1:1,000

Note: This product is for research use only.

Validation Data

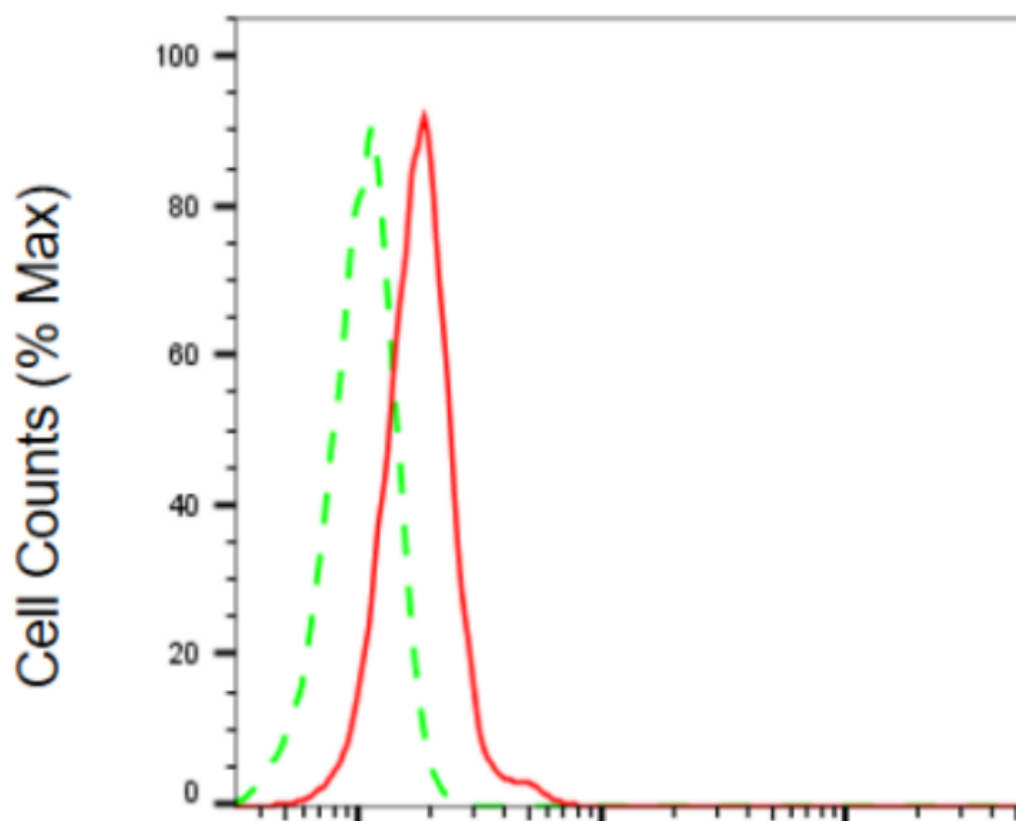
SUPPORT

SUPPORT@GENUINBIOTECH.COM
TEL: +1-540-855-7041

ORDERS

SALES@GENUINBIOTECH.COM
FAX: +1-540-855-7041

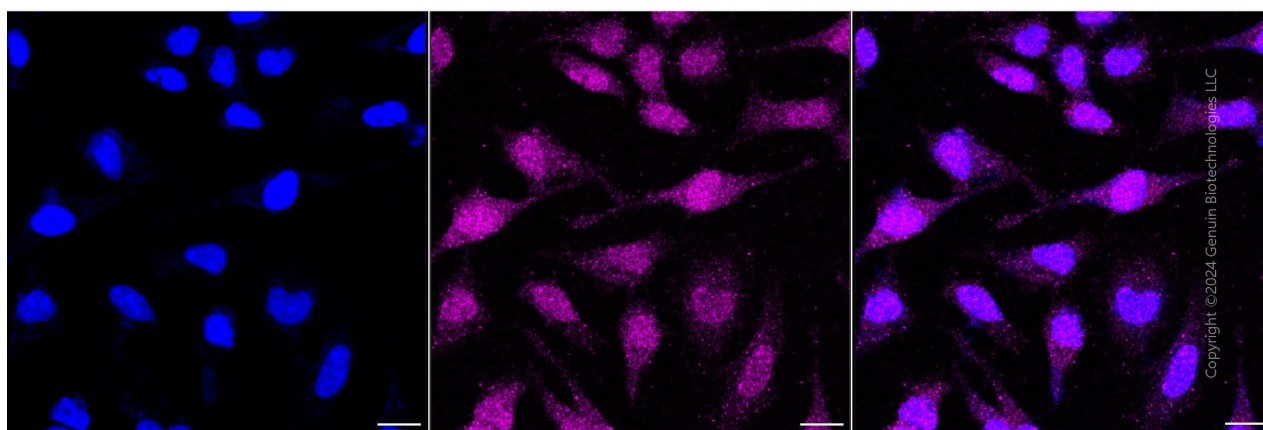
WWW.GENUINBIOTECH.COM



Copyright ©2024 Genuin Biotechnologies LLC

Phospho-presenilin 1 (Ser310)-Alexa Fluor® 647

Flow cytometric analysis of phospho-presenilin 1 (Ser310) expression in HeLa cells using anti-phospho-presenilin 1 (Ser310) antibody (Cat#4682, 1:2,000). Green, isotype control; red, phospho-presenilin 1 (Ser310).



Copyright ©2024 Genuin Biotechnologies LLC

Immunocytochemical staining of HeLa cells with anti-Phospho-Presenilin 1 (Ser310) antibody (Cat#4682, 1:1,000). Nuclei were stained blue with DAPI; Phospho-Presenilin 1 (Ser310) was stained magenta with Alexa Fluor® 647. Images were taken using Leica stellaris 5. Protein

SUPPORT

SUPPORT@GENUINBIOTECH.COM
TEL: +1-540-855-7041

ORDERS

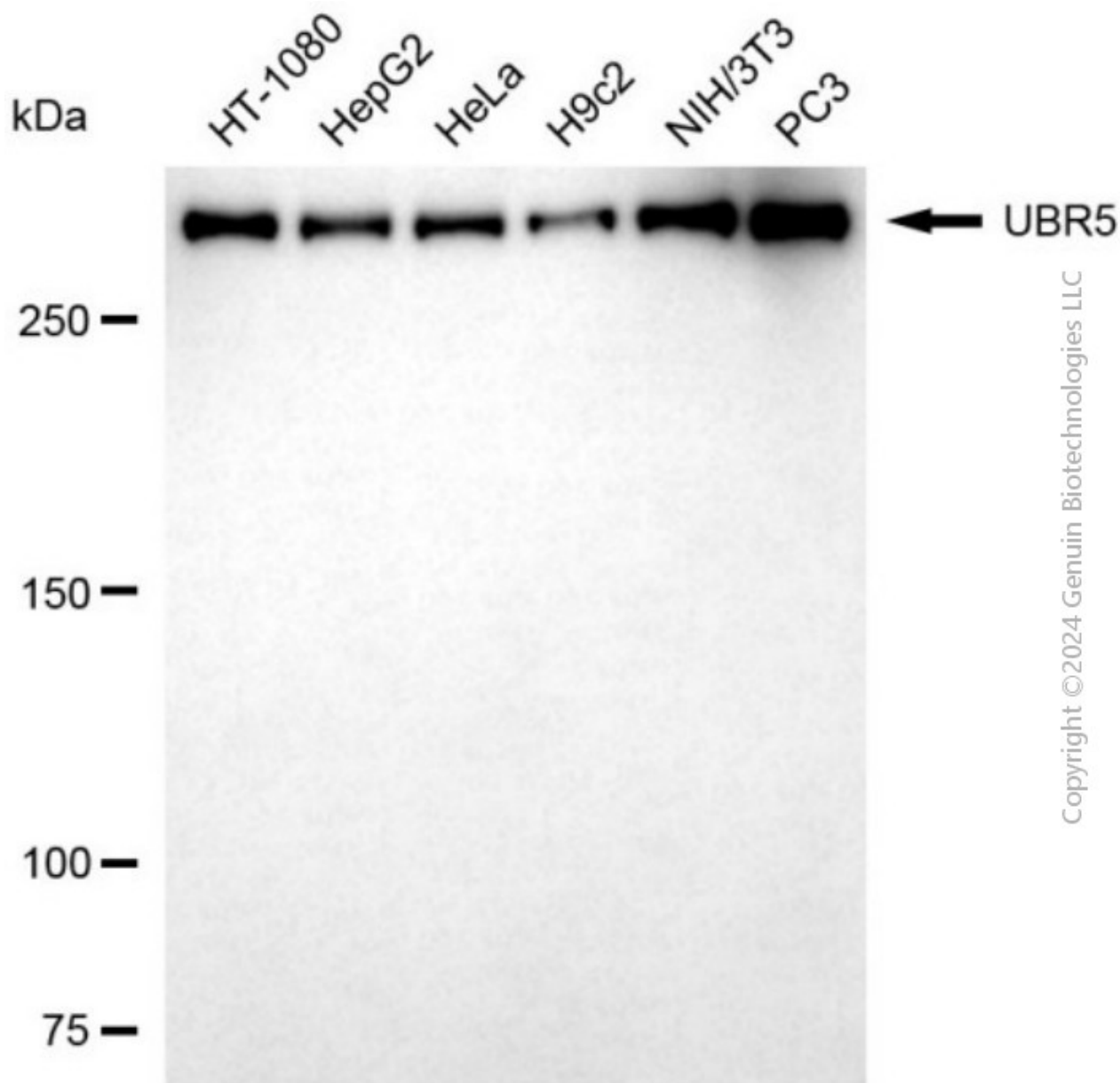
SALES@GENUINBIOTECH.COM
FAX: +1-540-855-7041

WWW.GENUINBIOTECH.COM

Anti-Phospho-Presenilin 1 (Ser310) Rabbit Monoclonal Antibody

PAGE 3

abundance based on laser Intensity and smart gain: Medium. Scale bar, 20 μ m.



Copyright © 2024 Genuin Biotechnologies LLC

Western blotting analysis using anti-phospho-presenilin 1 (Ser310) antibody (Cat#4682). Total cell lysates (30 μ g) from various cell lines were loaded and separated by SDS-PAGE. The blot was incubated with anti-phospho-presenilin 1 (Ser310) antibody (Cat#4682, 1:5,000) and HRP-conjugated goat anti-rabbit secondary antibody (Cat#201, 1:20,000) respectively. Image was developed using NaQ™ ECL Substrate Kit (Cat#716).

SUPPORT

SUPPORT@GENUINBIOTECH.COM
TEL: +1-540-855-7041

ORDERS

SALES@GENUINBIOTECH.COM
FAX: +1-540-855-7041

WWW.GENUINBIOTECH.COM