

# Anti-Phospho-4E BP1 (Thr46) Rabbit Monoclonal Antibody



**Catalog #: 4683**

## Aliases

EIF4EBP1; Eukaryotic Translation Initiation Factor 4E Binding Protein 1; PHAS-I ; 4E-BP1; Phosphorylated Heat- And Acid-Stable Protein Regulated By Insulin 1; Eukaryotic Translation Initiation Factor 4E-Binding Protein 1; EIF4E-Binding Protein 1; 4EBP1; BP-1

## Background

Gene Name: EIF4EBP1

NCBI Gene Entry: [1978](#)

UniProt Entry: [Q13541](#)

## Application Information

Molecular Weight: Predicted, 13 kDa; observed, 15-20 kDa

Clonality: Rabbit monoclonal antibody

Clone ID: 24GB12425

Species Reactivity: Human, mouse, rat

Applications Tested: Western blotting (WB), flow cytometry (FCM), immunocytochemistry (IC)

## Immunogen

A synthesized peptide derived from human Phospho-4E BP1 (Thr46)

## Isotype

Rabbit IgG

## Storage Buffer

Supplied in PBS (pH 7.4) containing 50% glycerol, and 0.02% sodium azide.

## Storage

Store at -20 °C for one year.

## Recommended Dilutions

Western Blotting (WB): 1:1,000-1:5,000

Flow Cytometry (FCM): 1:2,000

Immunocytochemistry (IC): 1:100-1:1,000

**Note:** This product is for research use only.

---

### SUPPORT

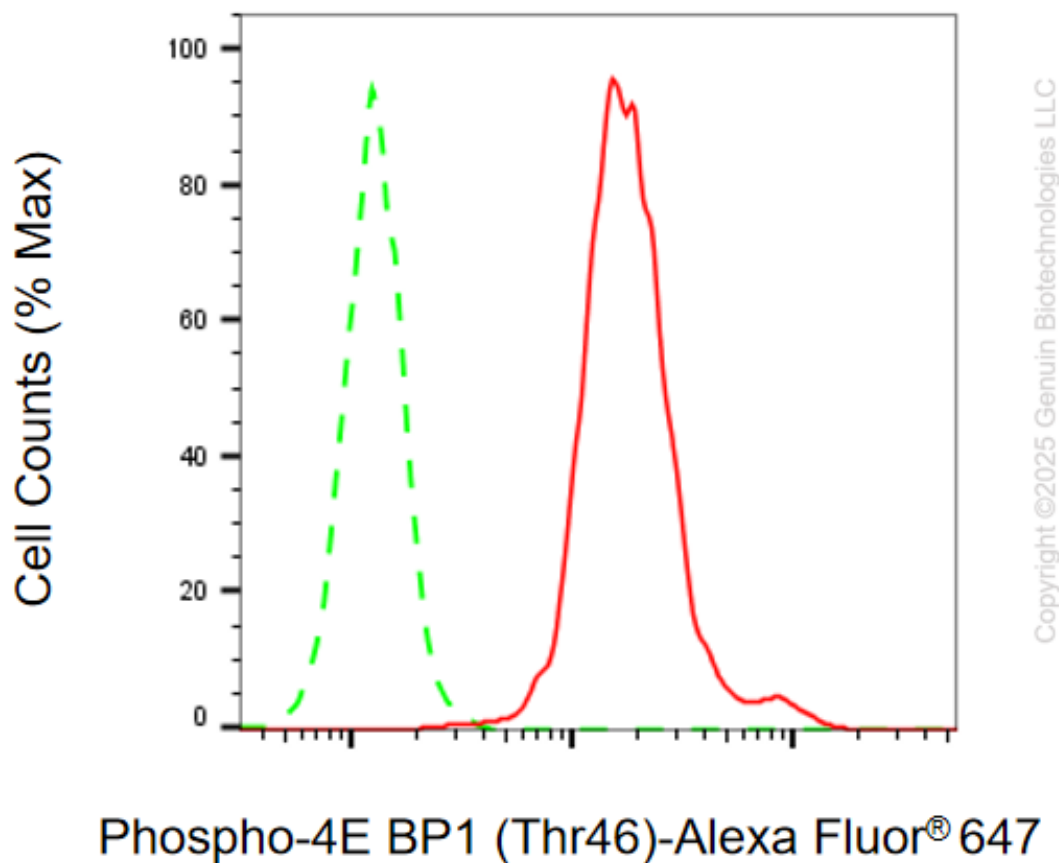
SUPPORT@GENUINBIOTECH.COM  
TEL: +1-540-855-7041

### ORDERS

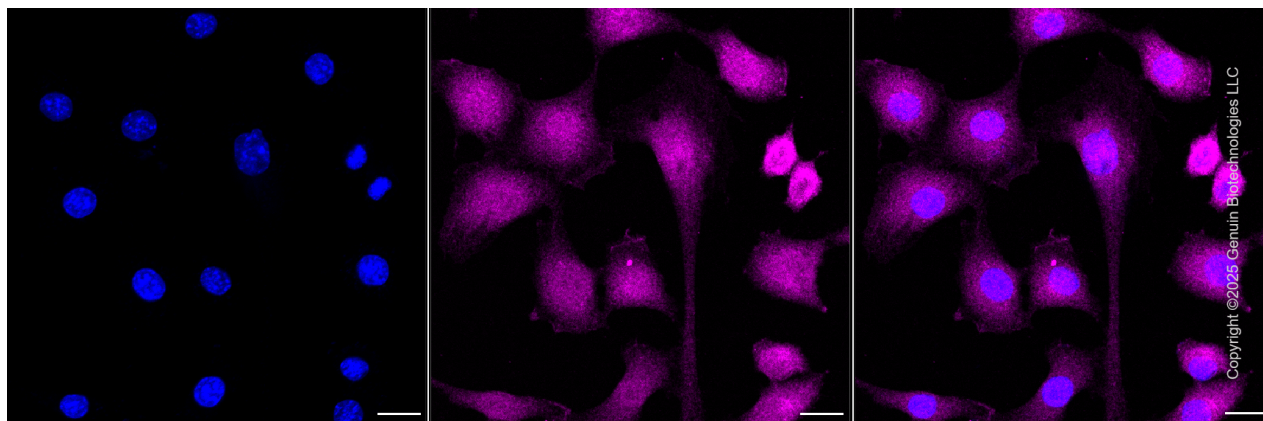
SALES@GENUINBIOTECH.COM  
FAX: +1-540-855-7041

[WWW.GENUINBIOTECH.COM](http://WWW.GENUINBIOTECH.COM)

**Validation Data**



Flow cytometric analysis of Phospho-4E BP1 (Thr46) expression in C2C12 cells using anti-Phospho-4E BP1 (Thr46) antibody (Cat#4683, 1:2,000). Green, isotype control; red, Phospho-4E BP1 (Thr46).



Immunocytochemical staining of C2C12 cells with anti-Phospho-4E BP1 (Thr46) antibody

**SUPPORT**

SUPPORT@GENUINBIOTECH.COM  
TEL: +1-540-855-7041

**ORDERS**

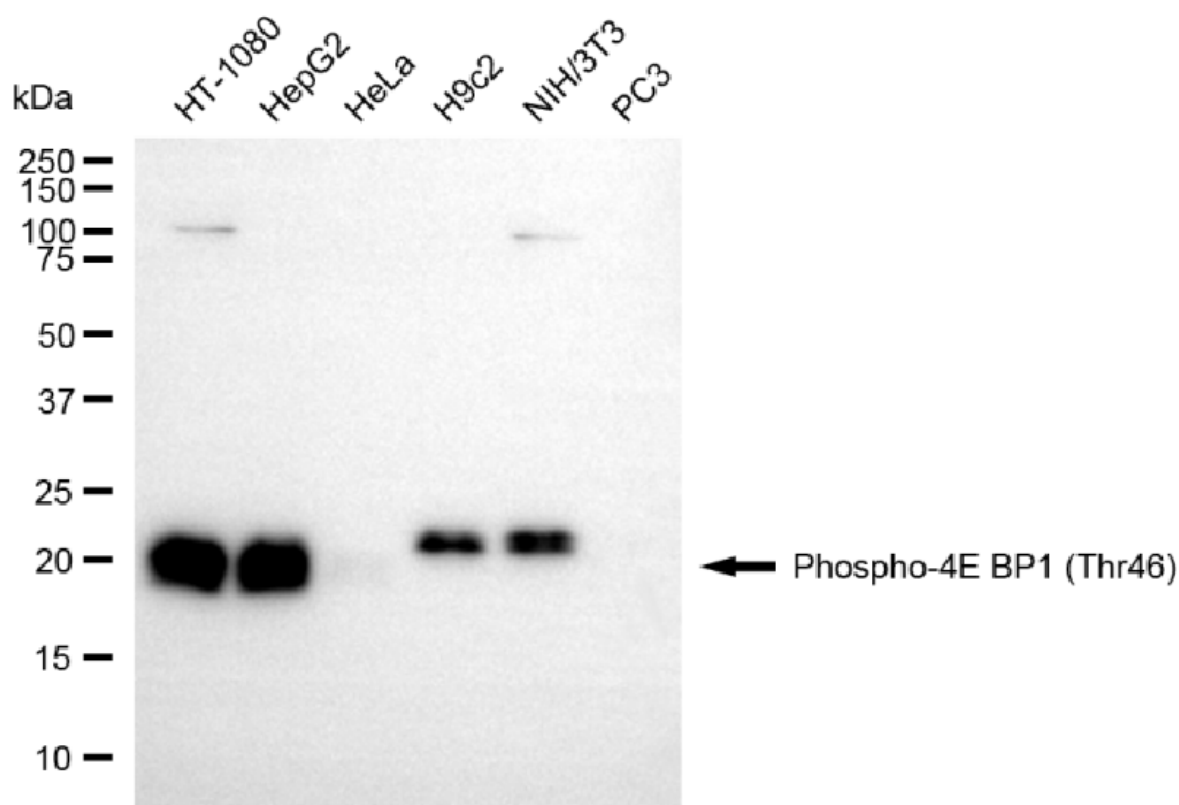
SALES@GENUINBIOTECH.COM  
FAX: +1-540-855-7041

**WWW.GENUINBIOTECH.COM**

## Anti-Phospho-4E BP1 (Thr46) Rabbit Monoclonal Antibody

PAGE 3

(Cat#4683, 1:1,000) . Nuclei were stained blue with DAPI; Phospho-4E BP1 (Thr46) was stained magenta with Alexa Fluor® 647. Images were taken using Leica stellaris 5. Protein abundance based on laser Intensity and smart gain: Medium. Scale bar, 20  $\mu$ m.



Copyright ©2025 Genuin Biotechnologies LLC

Western blotting analysis using anti-phospho-4E BP1 (Thr46) antibody (Cat#4683). Total cell lysates (30  $\mu$ g) from various cell lines were loaded and separated by SDS-PAGE. The blot was incubated with anti-phospho-4E BP1 (Thr46) antibody (Cat#4683, 1:5,000) and HRP-conjugated goat anti-rabbit secondary antibody (Cat#201, 1:20,000) respectively. Image was developed using NaQ™ ECL Substrate Kit (Cat#716).

### SUPPORT

SUPPORT@GENUINBIOTECH.COM  
TEL: +1-540-855-7041

### ORDERS

SALES@GENUINBIOTECH.COM  
FAX: +1-540-855-7041

WWW.GENUINBIOTECH.COM