

Catalog #: 4688

Aliases

ALDOA; Aldolase, Fructose-Bisphosphate A; Aldolase A, Fructose-Bisphosphate; Fructose-Bisphosphate Aldolase A; Lung Cancer Antigen NY-LU-1; Muscle-Type Aldolase; EC 4.1.2.13; ALDA; Epididymis Secretory Sperm Binding Protein Li 87p; Fructose-1,6-Bisphosphate Triosephosphate-Lyase; HEL-S-87p; GSD12

Background

Gene Name: ALDOA
NCBI Gene Entry: [226](#)
UniProt Entry: [P04075](#)

Application Information

Molecular Weight: Predicted, 39 kDa; observed, 36 kDa
Clonality: Rabbit monoclonal antibody
Clone ID: 24GB12450
Species Reactivity: Human, mouse, rat
Applications Tested: Western blotting (WB)

Immunogen

A synthesized peptide derived from human Aldolase

Isotype

Rabbit IgG

Storage Buffer

Supplied in PBS (pH 7.4) containing 50% glycerol, and 0.02% sodium azide.

Storage

Store at -20 °C for one year.

Recommended Dilutions

Western Blotting (WB): 1:1,000-1:5,000

Note: This product is for research use only.

Validation Data

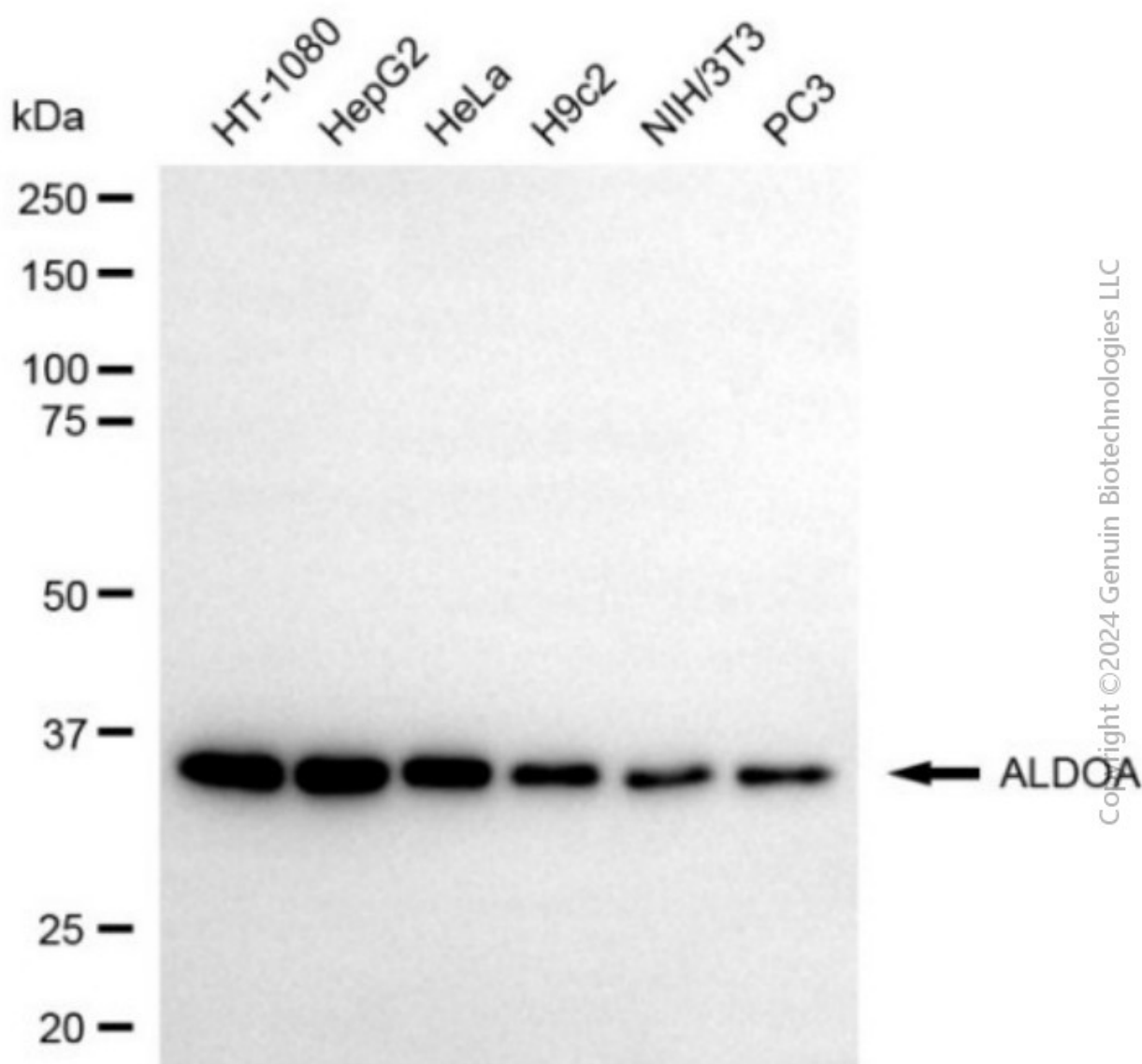
SUPPORT

SUPPORT@GENUINBIOTECH.COM
TEL: +1-540-855-7041

ORDERS

SALES@GENUINBIOTECH.COM
FAX: +1-540-855-7041

WWW.GENUINBIOTECH.COM



Western blotting analysis using anti-ALDOA antibody (Cat#4688). Total cell lysates (30 μ g) from various cell lines were loaded and separated by SDS-PAGE. The blot was incubated with anti-ALDOA antibody (Cat#4688, 1:5,000) and HRP-conjugated goat anti-rabbit secondary antibody (Cat#201, 1:20,000) respectively. Image was developed using FeQ™ ECL Substrate Kit (Cat#226).