

Anti-Arginyltransferase 1 Rabbit Monoclonal Antibody



Catalog #: 4690

Aliases

ATE1; Arginyltransferase 1; Arginine-TRNA--Protein Transferase 1; Arginyl-TRNA--Protein Transferase 1; R-Transferase 1; EC 2.3.2.8; Arginyl-TRNA-Protein Transferase

Background

Gene Name: ATE1

NCBI Gene Entry: [11101](#)

UniProt Entry: [O95260](#)

Application Information

Molecular Weight: Predicted, 59 kDa; observed, 59 kDa

Clonality: Rabbit monoclonal antibody

Clone ID: 24GB12460

Species Reactivity: Human, mouse, rat

Applications Tested: Western blotting (WB), flow cytometry (FCM)

Immunogen

A synthesized peptide derived from human ATE1

Isotype

Rabbit IgG

Storage Buffer

Supplied in PBS (pH 7.4) containing 50% glycerol, and 0.02% sodium azide.

Storage

Store at -20 °C for one year.

Recommended Dilutions

Western Blotting (WB): 1:1,000-1:5,000

Flow Cytometry (FCM): 1:2,000

Immunocytochemistry (IC): 1:100-1:1,000

Note: This product is for research use only.

Validation Data

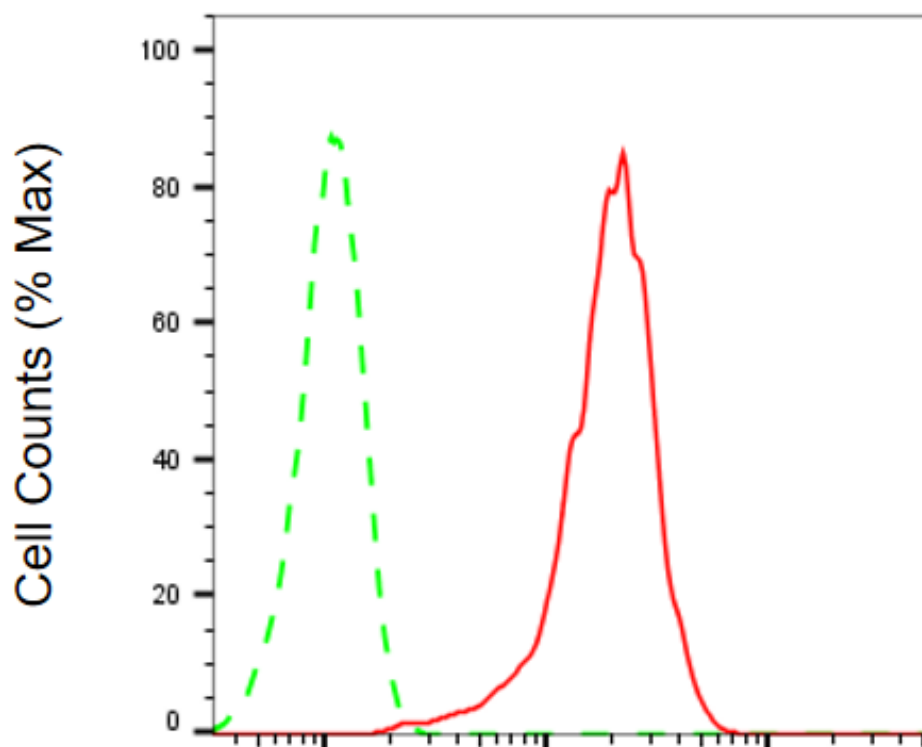
SUPPORT

SUPPORT@GENUINBIOTECH.COM
TEL: +1-540-855-7041

ORDERS

SALES@GENUINBIOTECH.COM
FAX: +1-540-855-7041

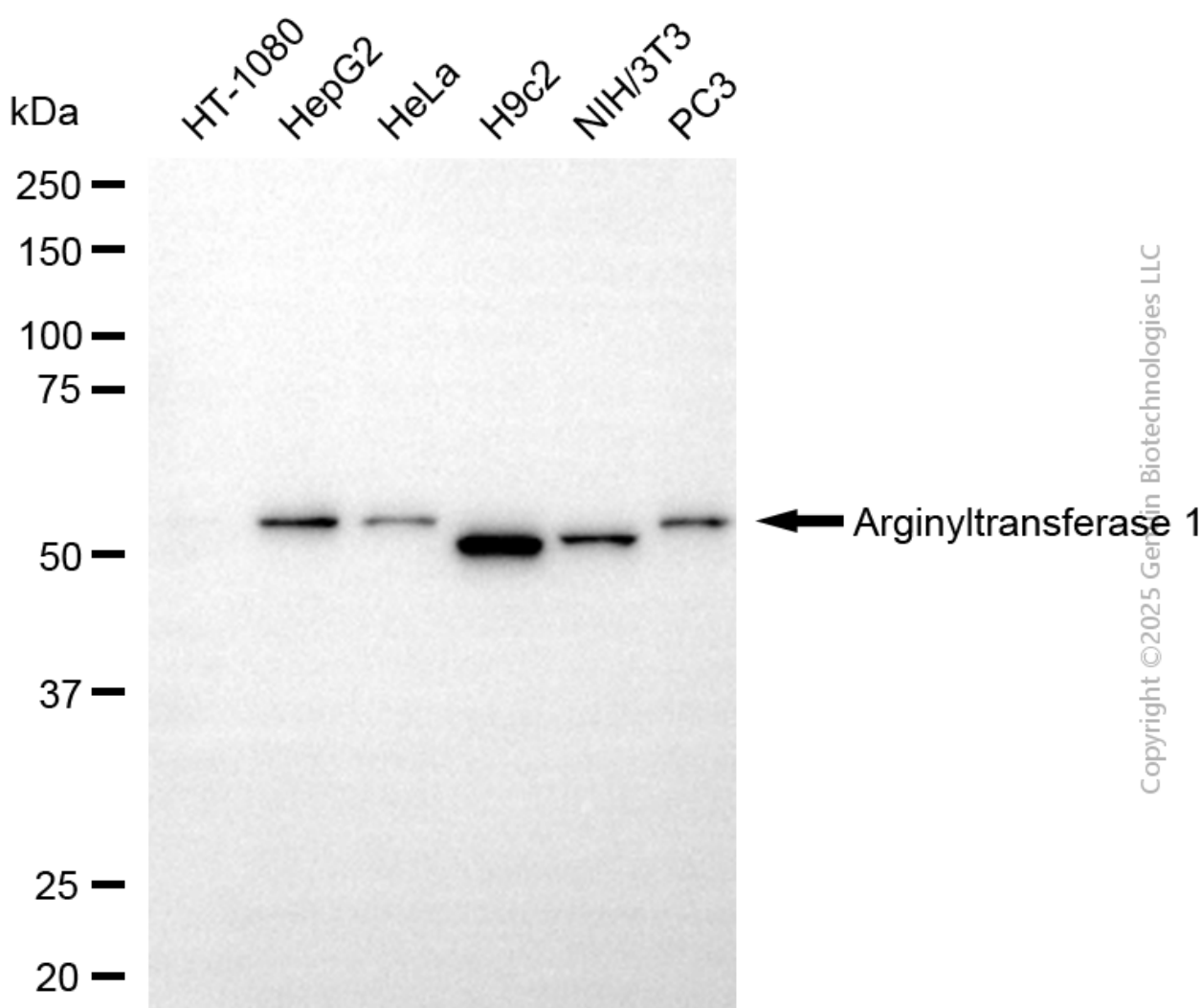
WWW.GENUINBIOTECH.COM



Copyright ©2025 Genuin Biotechnologies LLC

Arginyltransferase 1-Alexa Fluor® 647

Flow cytometric analysis of Arginyltransferase 1 expression in HepG2 cells using anti-Arginyltransferase 1 antibody (Cat#4690, 1:2,000). Green, isotype control; red, Arginyltransferase 1.



Copyright ©2025 Genuin Biotechnologies LLC

Western blotting analysis using anti-arginyltransferase 1 antibody (Cat#4690). Total cell lysates (30 µg) from various cell lines were loaded and separated by SDS-PAGE. The blot was incubated with anti-arginyltransferase 1 antibody (Cat#4690, 1:5,000) and HRP-conjugated goat anti-rabbit secondary antibody (Cat#201, 1:20,000) respectively. Image was developed using FeQ™ ECL Substrate Kit (Cat#226).