

## Catalog #: 4693

## Aliases

CALD1; Caldesmon 1; CDM; H-CAD; LCAD; H-CD; Caldesmon; Testis Secretory SpermBinding Protein Li 227n; NAG22; HCAD; LCAD; CAD

## Background

Gene Name: CALD1

NCBI Gene Entry: [800](#)

UniProt Entry: [Q05682](#)

## Application Information

Molecular Weight: Predicted, 93 kDa; observed, 70 kDa

Clonality: Rabbit monoclonal antibody

Clone ID: 24GB12475

Species Reactivity: Human, mouse, rat

Applications Tested: Western blotting (WB)

## Immunogen

A synthesized peptide derived from human Caldesmon

## Isotype

Rabbit IgG

## Storage Buffer

Supplied in PBS (pH 7.4) containing 50% glycerol, and 0.02% sodium azide.

## Storage

Store at -20 °C for one year.

## Recommended Dilutions

Western Blotting (WB): 1:1,000-1:5,000

**Note:** This product is for research use only.

## Validation Data

---

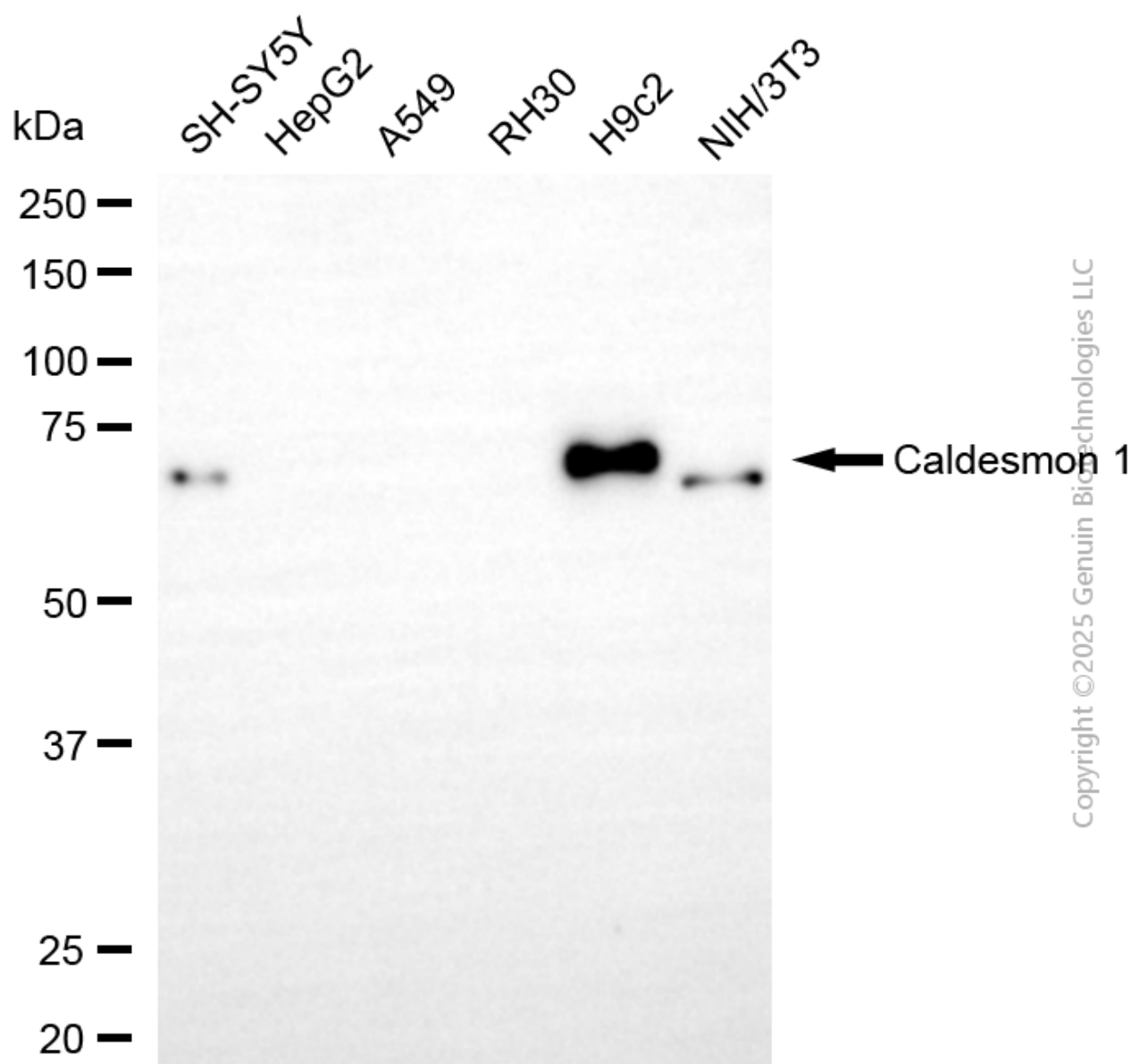
### SUPPORT

SUPPORT@GENUINBIOTECH.COM  
TEL: +1-540-855-7041

### ORDERS

SALES@GENUINBIOTECH.COM  
FAX: +1-540-855-7041

[WWW.GENUINBIOTECH.COM](http://WWW.GENUINBIOTECH.COM)



Copyright ©2025 Genuin Biotechnologies LLC

Western blotting analysis using anti-caldesmon 1 antibody (Cat#4693). Total cell lysates (30 µg) from various cell lines were loaded and separated by SDS-PAGE. The blot was incubated with anti-caldesmon 1 antibody (Cat#4693, 1:5,000) and HRP-conjugated goat anti-rabbit secondary antibody (Cat#201, 1:20,000) respectively. Image was developed using FeQ™ ECL Substrate Kit (Cat#226).

## SUPPORT

SUPPORT@GENUINBIOTECH.COM  
TEL: +1-540-855-7041

## ORDERS

SALES@GENUINBIOTECH.COM  
FAX: +1-540-855-7041

WWW.GENUINBIOTECH.COM