

# Anti-cAMP Protein Kinase Catalytic Subunit Rabbit Monoclonal Antibody



**Catalog #: 4694**

## Aliases

Protein Kinase; CAMP-Dependent; Catalytic; Alpha; CAMP-Dependent Protein Kinase Catalytic Subunit Alpha; PKACA; Protein Kinase A Catalytic Subunit; PKA C-Alpha; EC 2.7.11; EC 2.7.11.11

## Background

Gene Name: PRKACA

NCBI Gene Entry: [5566](#)

UniProt Entry: [P17612](#)

## Application Information

Molecular Weight: Predicted, 41 kDa; observed, 41 kDa

Clonality: Rabbit monoclonal antibody

Clone ID: 24GB12480

Species Reactivity: Human, mouse, rat

Applications Tested: Western blotting (WB), flow cytometry (FCM), immunocytochemistry (IC)

## Immunogen

A synthesized peptide derived from human cAMP Protein Kinase Catalytic subunit

## Isotype

Rabbit IgG

## Storage Buffer

Supplied in PBS (pH 7.4) containing 50% glycerol, and 0.02% sodium azide.

## Storage

Store at -20 °C for one year.

## Recommended Dilutions

Western Blotting (WB): 1:1,000-1:5,000

Flow Cytometry (FCM): 1:2,000

Immunocytochemistry (IC): 1:100-1:1,000

**Note:** This product is for research use only.

---

### SUPPORT

SUPPORT@GENUINBIOTECH.COM  
TEL: +1-540-855-7041

### ORDERS

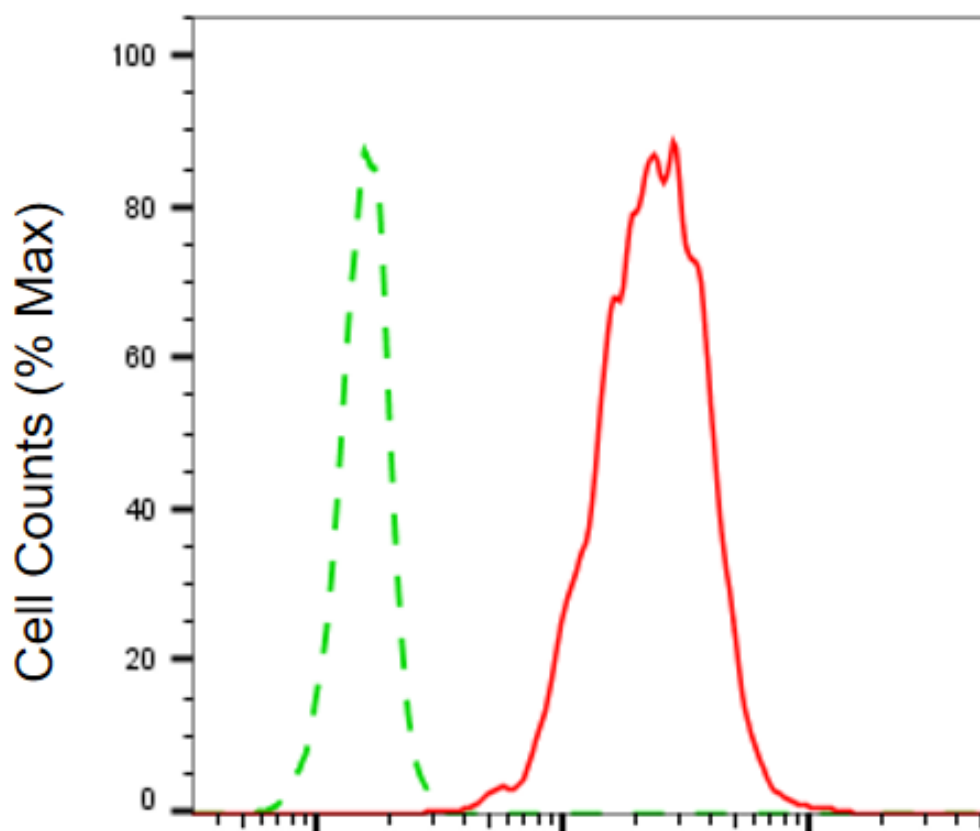
SALES@GENUINBIOTECH.COM  
FAX: +1-540-855-7041

[WWW.GENUINBIOTECH.COM](http://WWW.GENUINBIOTECH.COM)

# Anti-cAMP Protein Kinase Catalytic Subunit Rabbit Monoclonal Antibody

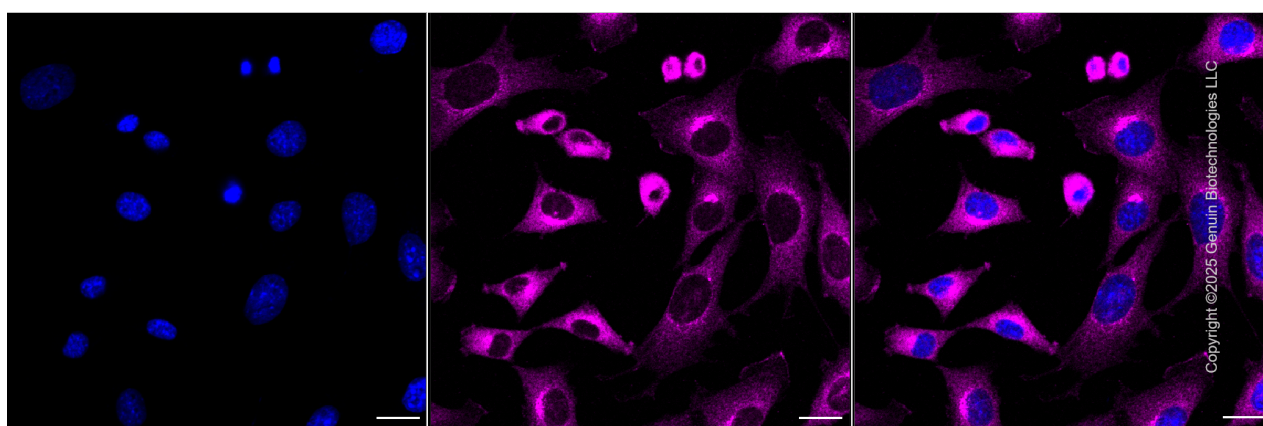
PAGE 2

## Validation Data



## cAMP Protein Kinase Catalytic Subunit-Alexa Fluor® 647

Flow cytometric analysis of cAMP Protein Kinase Catalytic Subunit expression in C2C12 cells using anti-cAMP Protein Kinase Catalytic Subunit antibody (Cat#4694, 1:2,000). Green, isotype control; red, cAMP Protein Kinase Catalytic Subunit.



### SUPPORT

SUPPORT@GENUINBIOTECH.COM  
TEL: +1-540-855-7041

### ORDERS

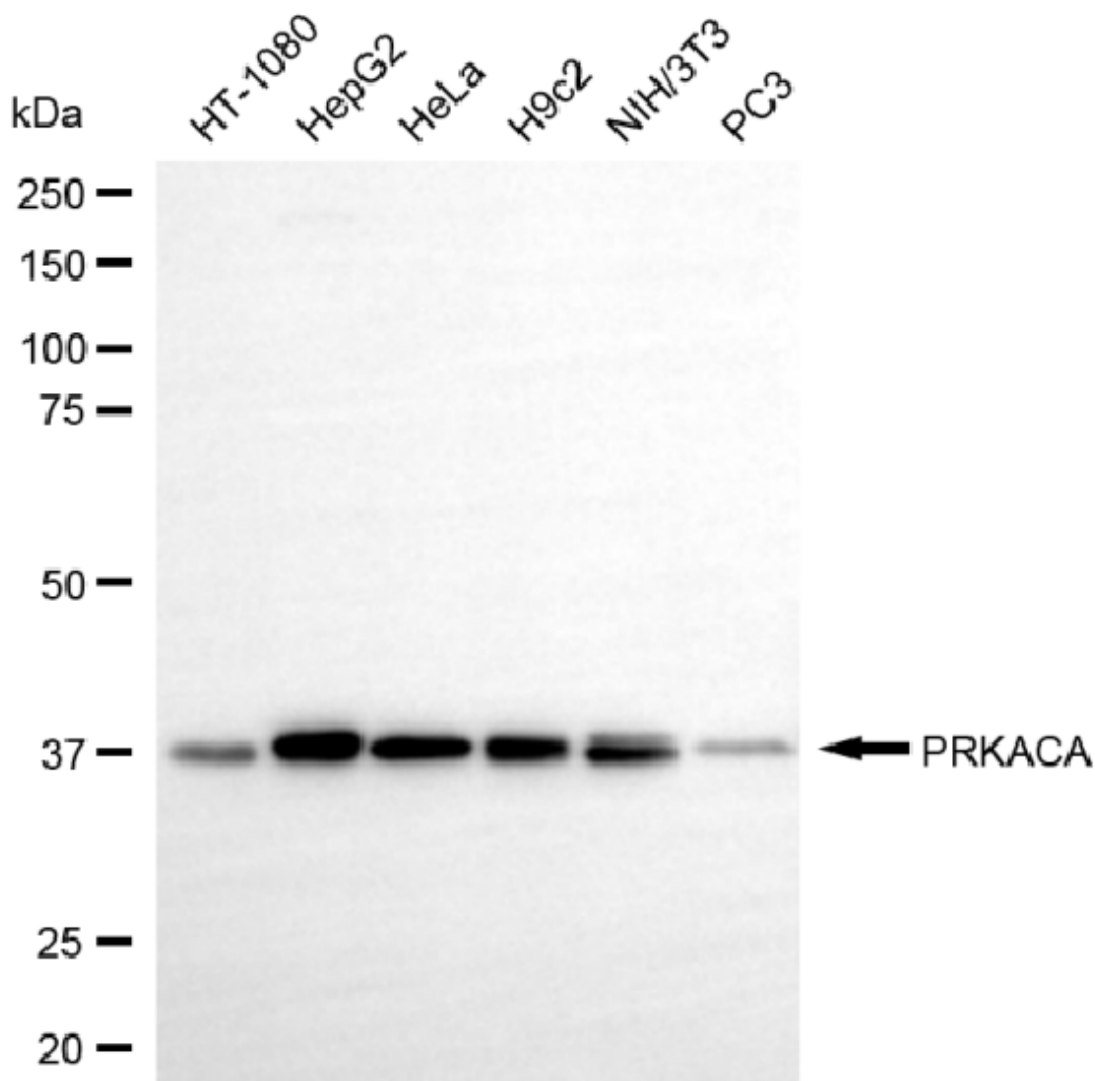
SALES@GENUINBIOTECH.COM  
FAX: +1-540-855-7041

WWW.GENUINBIOTECH.COM

## Anti-cAMP Protein Kinase Catalytic Subunit Rabbit Monoclonal Antibody

PAGE 3

Immunocytochemical staining of HeLa cells with anti-cAMP Protein Kinase Catalytic Subunit antibody (Cat#4694, 1:1,000). Nuclei were stained blue with DAPI; cAMP Protein Kinase Catalytic Subunit was stained magenta with Alexa Fluor® 647. Images were taken using Leica stellaris 5. Protein abundance based on laser Intensity and smart gain: Medium. Scale bar, 20  $\mu$ m.



Copyright ©2025 Genuin Biotechnologies LLC

Western blotting analysis using anti-cAMP Protein Kinase Catalytic Subunit antibody (Cat#4694). Total cell lysates (30  $\mu$ g) from various cell lines were loaded and separated by SDS-PAGE. The blot was incubated with anti-cAMP Protein Kinase Catalytic Subunit antibody (Cat#4694, 1:5,000) and HRP-conjugated goat anti-rabbit secondary antibody (Cat#201, 1:20,000) respectively. Image was developed using NaQ™ ECL Substrate Kit (Cat#716).

### SUPPORT

SUPPORT@GENUINBIOTECH.COM  
TEL: +1-540-855-7041

### ORDERS

SALES@GENUINBIOTECH.COM  
FAX: +1-540-855-7041

WWW.GENUINBIOTECH.COM