

Anti-Creatine Kinase B type Rabbit Monoclonal Antibody



Catalog #: 4702

Aliases

CKB; Creatine Kinase B; CKBB; Creatine Phosphokinase B-Type; Creatine Kinase Brain-Type; Creatine Kinase B Chain; Creatine Kinase B-Type; Brain Creatine Kinase; EC 2.7.3.2; CPK-B; B-CK; Epididymis Secretory Protein Li; Epididymis Luminal Protein 211; Creatine Kinase, Brain; Creatine Kinase Brain; HEL-S-29; EC 2.7.3; HEL-211; BCK

Background

Gene Name: CKB

NCBI Gene Entry: [1152](#)

UniProt Entry: [P12277](#)

Application Information

Molecular Weight: Predicted, 43 kDa; observed, 43 kDa

Clonality: Rabbit monoclonal antibody

Clone ID: 24GB12520

Species Reactivity: Human

Applications Tested: Western blotting (WB), flow cytometry (FCM), immunocytochemistry (IC)

Immunogen

A synthesized peptide derived from human Creatine kinase B type

Isotype

Rabbit IgG

Storage Buffer

Supplied in PBS (pH 7.4) containing 50% glycerol, and 0.02% sodium azide.

Storage

Store at -20 °C for one year.

Recommended Dilutions

Western Blotting (WB): 1:1,000-1:5,000

Flow Cytometry (FCM): 1:2,000

Immunocytochemistry (IC): 1:100-1:1,000

SUPPORT

SUPPORT@GENUINBIOTECH.COM
TEL: +1-540-855-7041

ORDERS

SALES@GENUINBIOTECH.COM
FAX: +1-540-855-7041

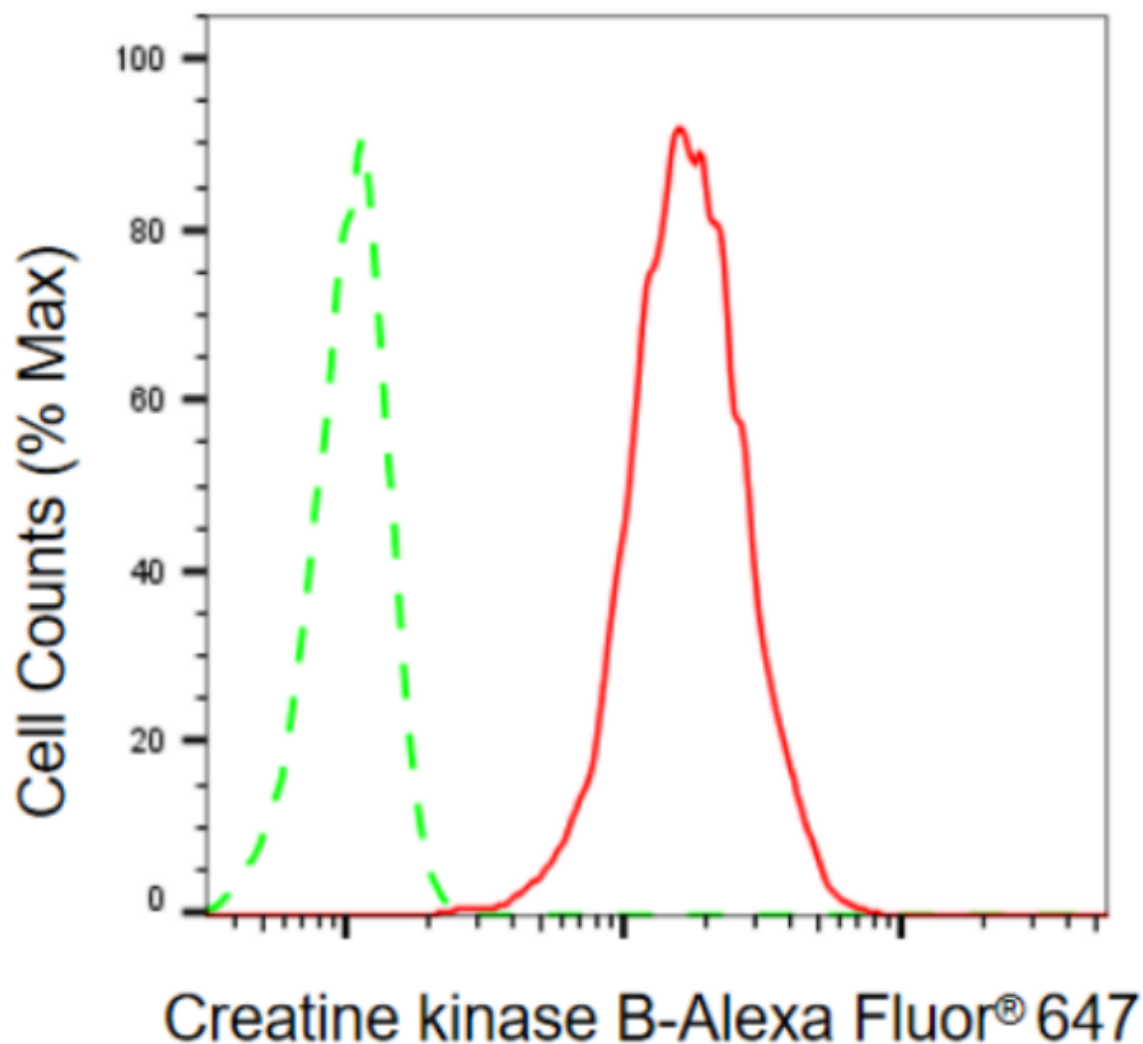
WWW.GENUINBIOTECH.COM

Anti-Creatine Kinase B type Rabbit Monoclonal Antibody

PAGE 2

Note: This product is for research use only.

Validation Data



Copyright ©2024 Genuin Biotechnologies LLC

Flow cytometric analysis of creatine kinase B expression in HeLa cells using anti-creatine kinase B antibody (Cat#4702, 1:2,000). Green, isotype control; red, creatine kinase B.

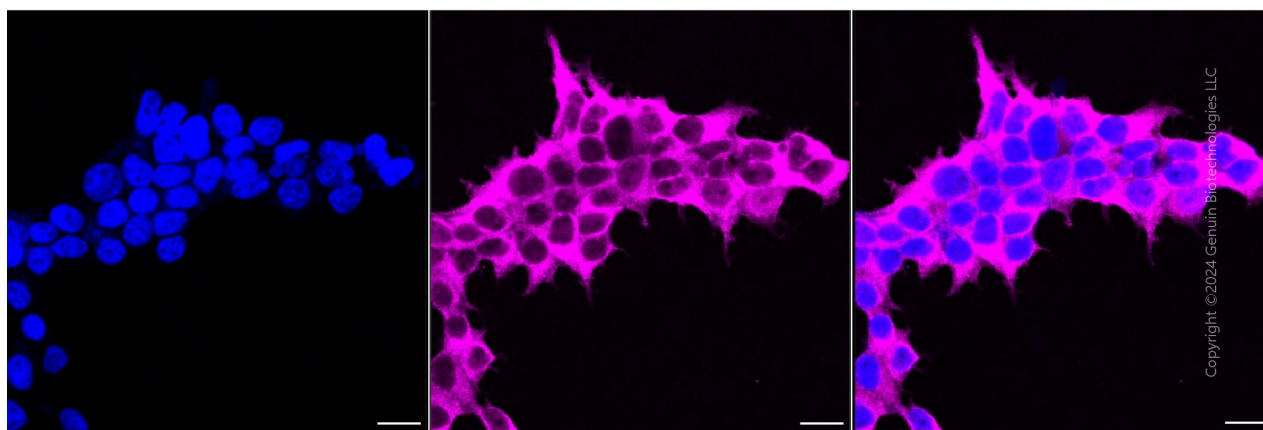
SUPPORT

SUPPORT@GENUINBIOTECH.COM
TEL: +1-540-855-7041

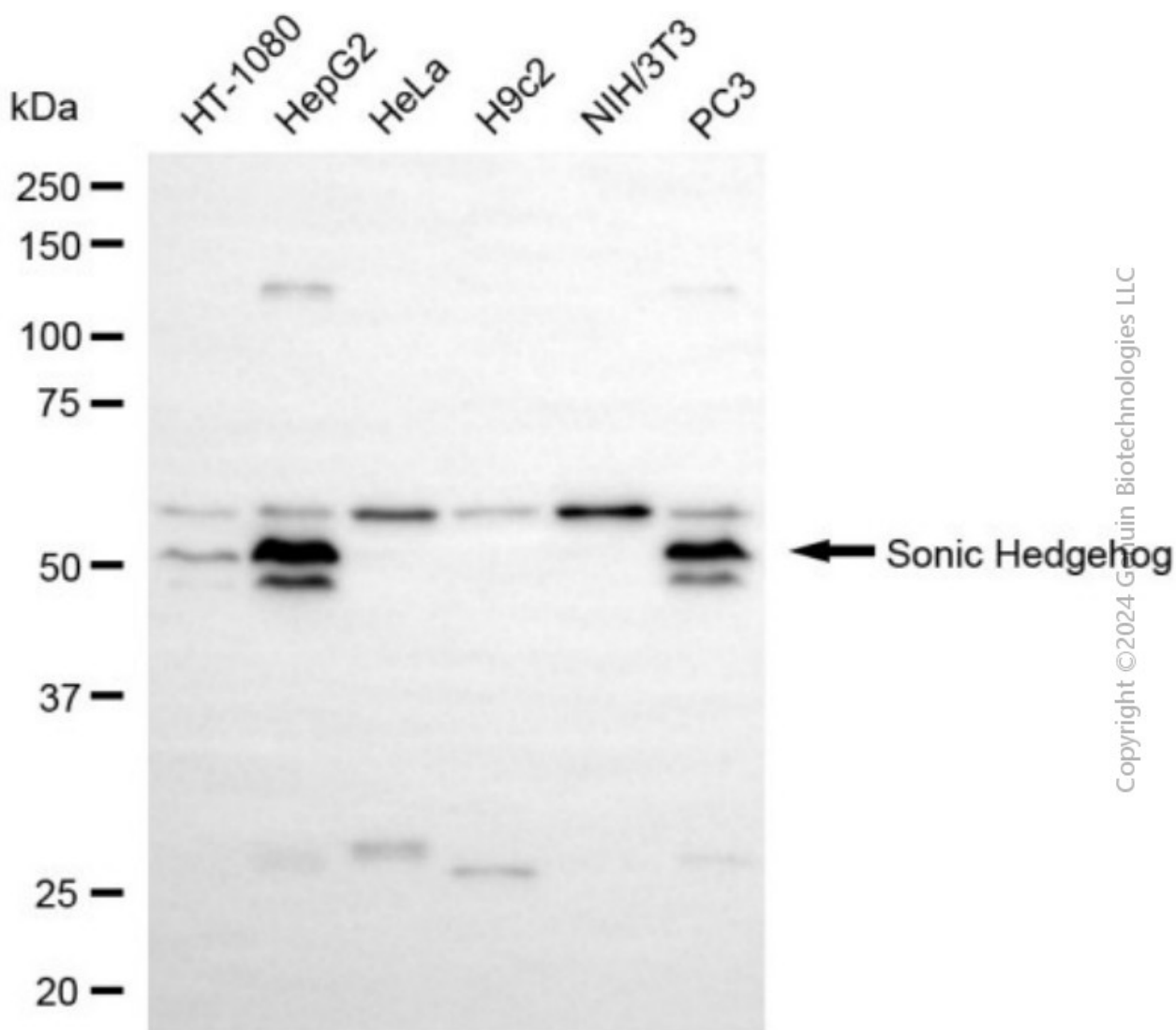
ORDERS

SALES@GENUINBIOTECH.COM
FAX: +1-540-855-7041

WWW.GENUINBIOTECH.COM



Immunocytochemical staining of HeLa cells with anti-Creatine kinase B antibody (Cat#4702, 1:1,000). Nuclei were stained blue with DAPI; Creatine kinase B was stained magenta with Alexa Fluor® 647. Images were taken using Leica stellaris 5. Protein abundance based on laser Intensity and smart gain: High. Scale bar, 20 µm.



SUPPORT

SUPPORT@GENUINBIOTECH.COM
TEL: +1-540-855-7041

ORDERS

SALES@GENUINBIOTECH.COM
FAX: +1-540-855-7041

WWW.GENUINBIOTECH.COM

Anti-Creatine Kinase B type Rabbit Monoclonal Antibody

PAGE 4

Western blotting analysis using anti-creatine kinase B antibody (Cat#4702). Total cell lysates (30 µg) from various cell lines were loaded and separated by SDS-PAGE. The blot was incubated with anti-creatine kinase B antibody (Cat#4702, 1:5,000) and HRP-conjugated goat anti-rabbit secondary antibody (Cat#201, 1:20,000) respectively. Image was developed using NaQ™ ECL Substrate Kit (Cat#716).

SUPPORT

SUPPORT@GENUINBIOTECH.COM
TEL: +1-540-855-7041

ORDERS

SALES@GENUINBIOTECH.COM
FAX: +1-540-855-7041

WWW.GENUINBIOTECH.COM