

Catalog #: 4704

Aliases

PCYT1A; Phosphate Cytidylyltransferase 1A, Choline;
CTPCT; CCTalpha; PCYT1; CT; Phosphate Cytidylyltransferase 1, Choline, Alpha;
CTP:Phosphocholine Cytidylyltransferase-Alpha; Choline-Phosphate Cytidylyltransferase Alpha;
CTP:Phosphocholine Cytidylyltransferase A; Choline-Phosphate Cytidylyltransferase A;
Phosphorylcholine Transferase Alpha;
Phosphorylcholine Transferase A; EC 2.7.7.15 4; CCT-Alpha; CCT A; CT A;
Phosphate Cytidylyltransferase 1, Choline, Alpha Isoform; EC 2.7.7; SMDCRD; CCTA;
CGL5;CTA

Background

Gene Name: PCYT1A
NCBI Gene Entry: [5130](#)
UniProt Entry: [P49585](#)

Application Information

Molecular Weight: Predicted, 42 kDa; observed, 42 kDa
Clonality: Rabbit monoclonal antibody
Clone ID: 24GB12530
Species Reactivity: Human, mouse
Applications Tested: Western blotting (WB), flow cytometry (FCM), immunocytochemistry (IC)

Immunogen

A synthesized peptide derived from human CT A

Isotype

Rabbit IgG

Storage Buffer

Supplied in PBS (pH 7.4) containing 50% glycerol, and 0.02% sodium azide.

Storage

Store at -20 °C for one year.

Recommended Dilutions

Western Blotting (WB): 1:1,000-1:5,000

SUPPORT

SUPPORT@GENUINBIOTECH.COM
TEL: +1-540-855-7041

ORDERS

SALES@GENUINBIOTECH.COM
FAX: +1-540-855-7041

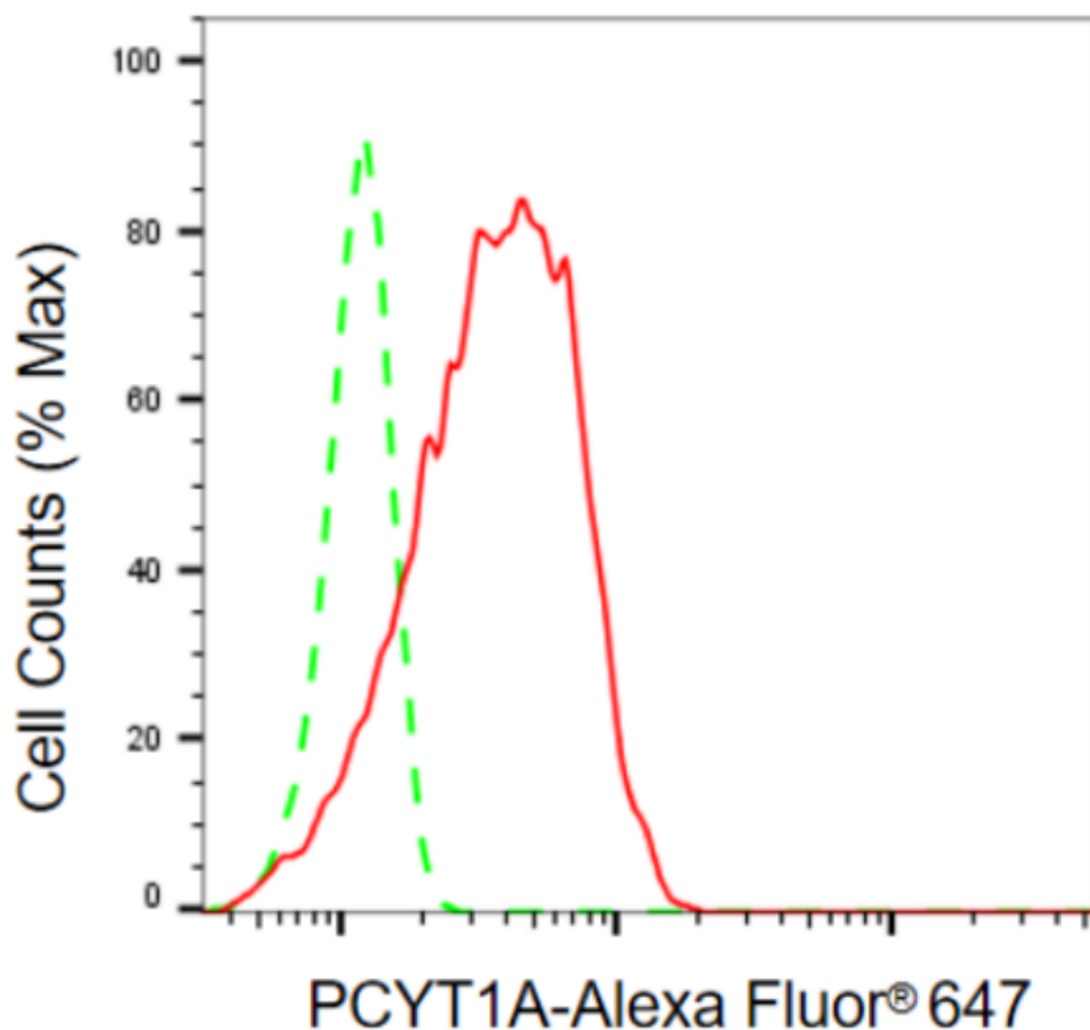
WWW.GENUINBIOTECH.COM

Flow Cytometry (FCM): 1:2,000

Immunocytochemistry (IC): 1:100-1:1,000

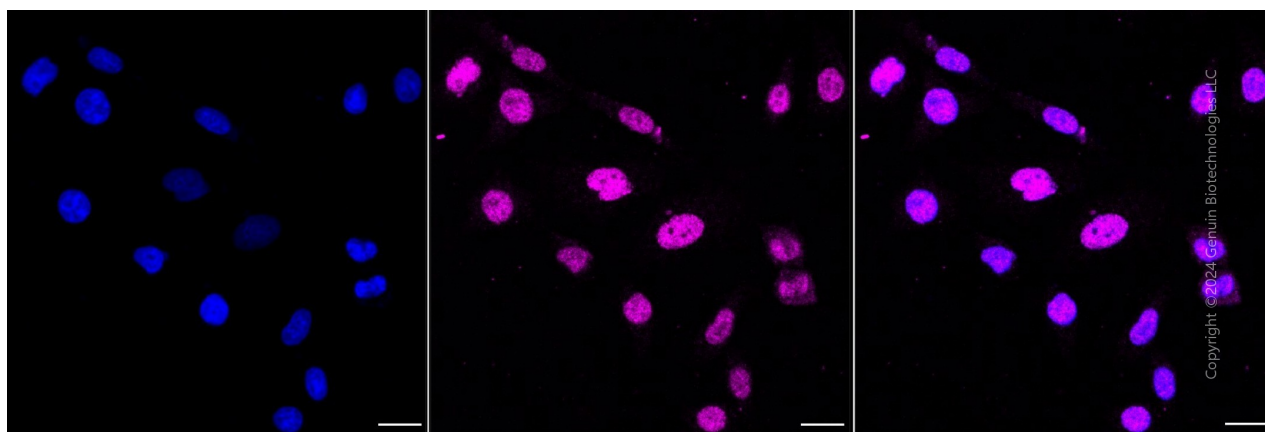
Note: This product is for research use only.

Validation Data



Copyright ©2024 Genuin Biotechnologies LLC

Flow cytometric analysis of PCYT1A expression in HepG2 cells using anti-PCYT1A antibody (Cat#4704, 1:2,000). Green, isotype control; red, PCYT1A.



Immunocytochemical staining of HepG2 cells with anti-PCYT1A antibody (Cat#4704, 1:1,000) . Nuclei were stained blue with DAPI; PCYT1A was stained magenta with Alexa Fluor® 647. Images were taken using Leica stellaris 5. Protein abundance based on laser Intensity and smart gain: Low. Scale bar, 20 µm.

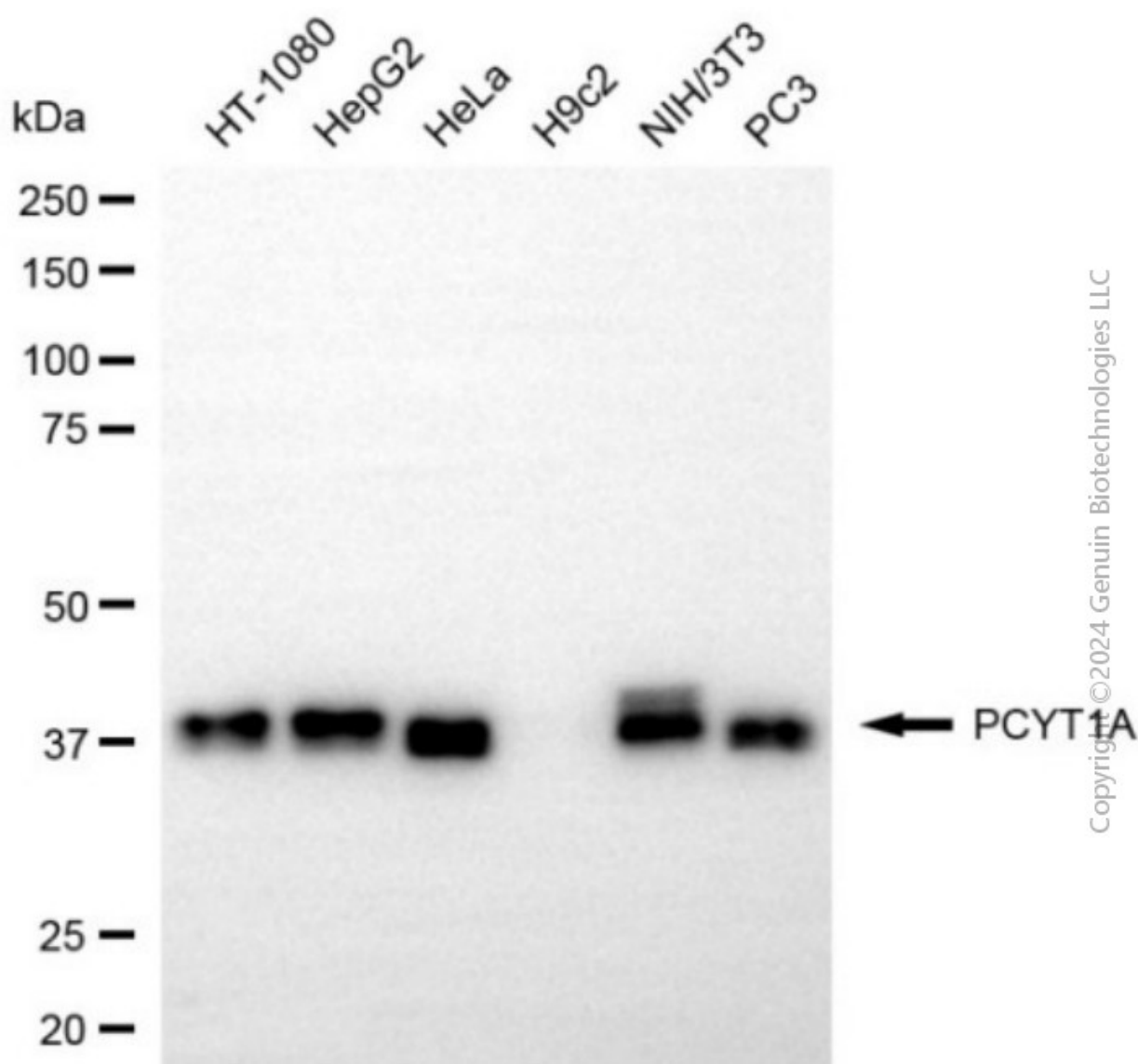
SUPPORT

SUPPORT@GENUINBIOTECH.COM
TEL: +1-540-855-7041

ORDERS

SALES@GENUINBIOTECH.COM
FAX: +1-540-855-7041

WWW.GENUINBIOTECH.COM



Western blotting analysis using anti-PCYT1A antibody (Cat#4704). Total cell lysates (30 μ g) from various cell lines were loaded and separated by SDS-PAGE. The blot was incubated with anti-PCYT1A antibody (Cat#4704, 1:5,000) and HRP-conjugated goat anti-rabbit secondary antibody (Cat#201, 1:20,000) respectively. Image was developed using NaQTM ECL Substrate Kit (Cat#716).