

Catalog #: 4706

Aliases

CCNE2; Cyclin E2; CYCE2; G1/S-Specific Cyclin-E2

Background

Gene Name: CCNE2

NCBI Gene Entry: [9134](#)

UniProt Entry: [O96020](#)

Application Information

Molecular Weight: Predicted, 47 kDa; observed, 47 kDa

Clonality: Rabbit monoclonal antibody

Clone ID: 24GB12540

Species Reactivity: Human

Applications Tested: Western blotting (WB)

Immunogen

A synthesized peptide derived from human Cyclin E2

Isotype

Rabbit IgG

Storage Buffer

Supplied in PBS (pH 7.4) containing 50% glycerol, and 0.02% sodium azide.

Storage

Store at -20 °C for one year.

Recommended Dilutions

Western Blotting (WB): 1:1,000-1:5,000

Note: This product is for research use only.

Validation Data

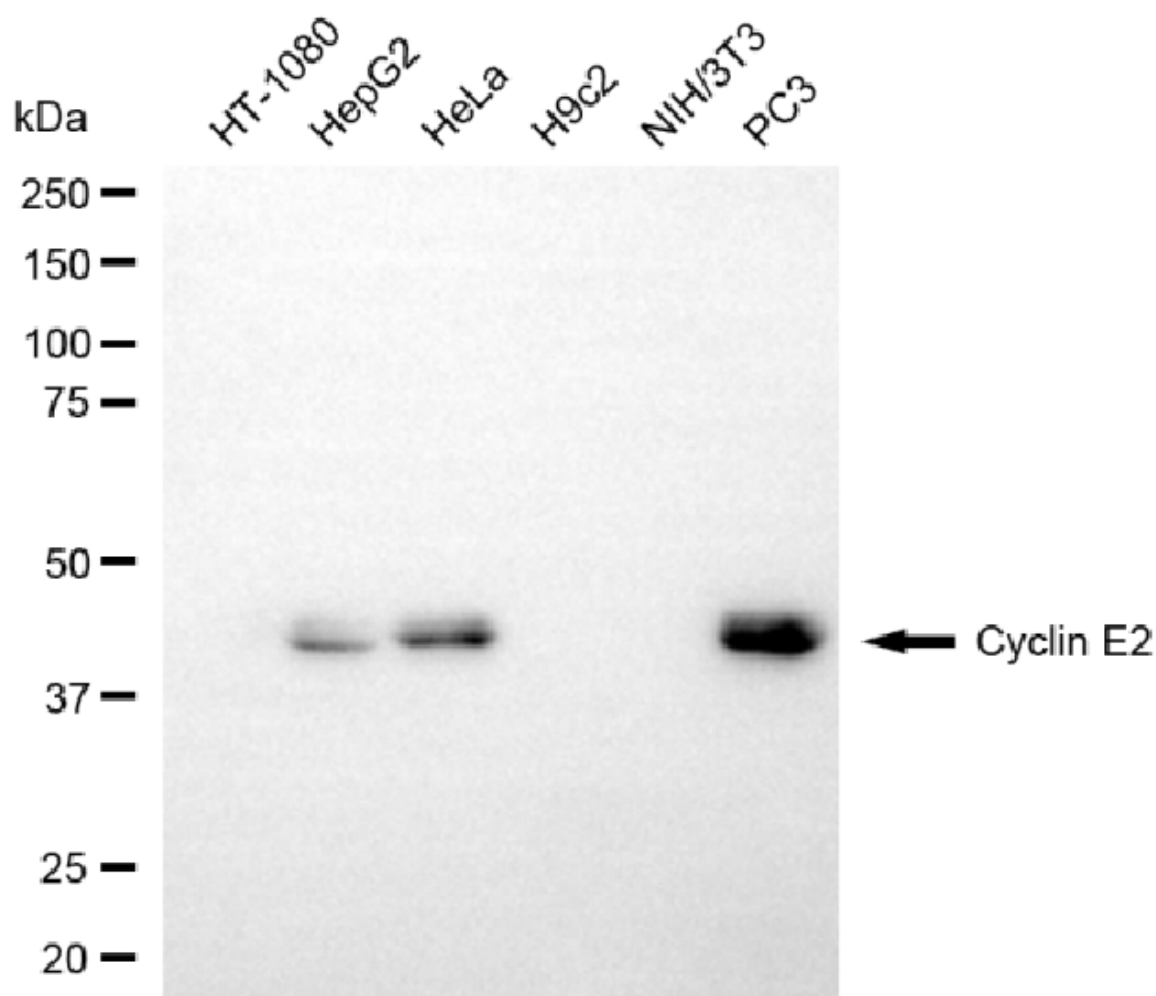
SUPPORT

SUPPORT@GENUINBIOTECH.COM
TEL: +1-540-855-7041

ORDERS

SALES@GENUINBIOTECH.COM
FAX: +1-540-855-7041

WWW.GENUINBIOTECH.COM



Copyright ©2025 Genuin Biotechnologies LLC

Western blotting analysis using anti-cyclin E2 antibody (Cat#4706). Total cell lysates (30 μ g) from various cell lines were loaded and separated by SDS-PAGE. The blot was incubated with anti-cyclin E2 antibody (Cat#4706, 1:5,000) and HRP-conjugated goat anti-rabbit secondary antibody (Cat#201, 1:20,000) respectively. Image was developed using NaQ™ ECL Substrate Kit (Cat#716).

SUPPORT

SUPPORT@GENUINBIOTECH.COM
TEL: +1-540-855-7041

ORDERS

SALES@GENUINBIOTECH.COM
FAX: +1-540-855-7041

WWW.GENUINBIOTECH.COM