

# Anti-E2F Transcription Factor 4 Rabbit Monoclonal Antibody



**Catalog #: 4710**

## Aliases

E2F4; E2F Transcription Factor 4; E2F-4; E2F Transcription Factor 4, P107/P130-Binding; Transcription Factor E2F4; P107/P130-Binding Protein

## Background

Gene Name: E2F4

NCBI Gene Entry: [1874](#)

UniProt Entry: [Q16254](#)

## Application Information

Molecular Weight: Predicted, 44 kDa; observed, 65 kDa

Clonality: Rabbit monoclonal antibody

Clone ID: 24GB12560

Species Reactivity: Human

Applications Tested: Western blotting (WB), flow cytometry (FCM), immunocytochemistry (IC)

## Immunogen

A synthesized peptide derived from human E2F4

## Isotype

Rabbit IgG

## Storage Buffer

Supplied in PBS (pH 7.4) containing 50% glycerol, and 0.02% sodium azide.

## Storage

Store at -20 °C for one year.

## Recommended Dilutions

Western Blotting (WB): 1:1,000-1:5,000

Flow Cytometry (FCM): 1:2,000

Immunocytochemistry (IC): 1:100-1:1,000

**Note:** This product is for research use only.

## Validation Data

---

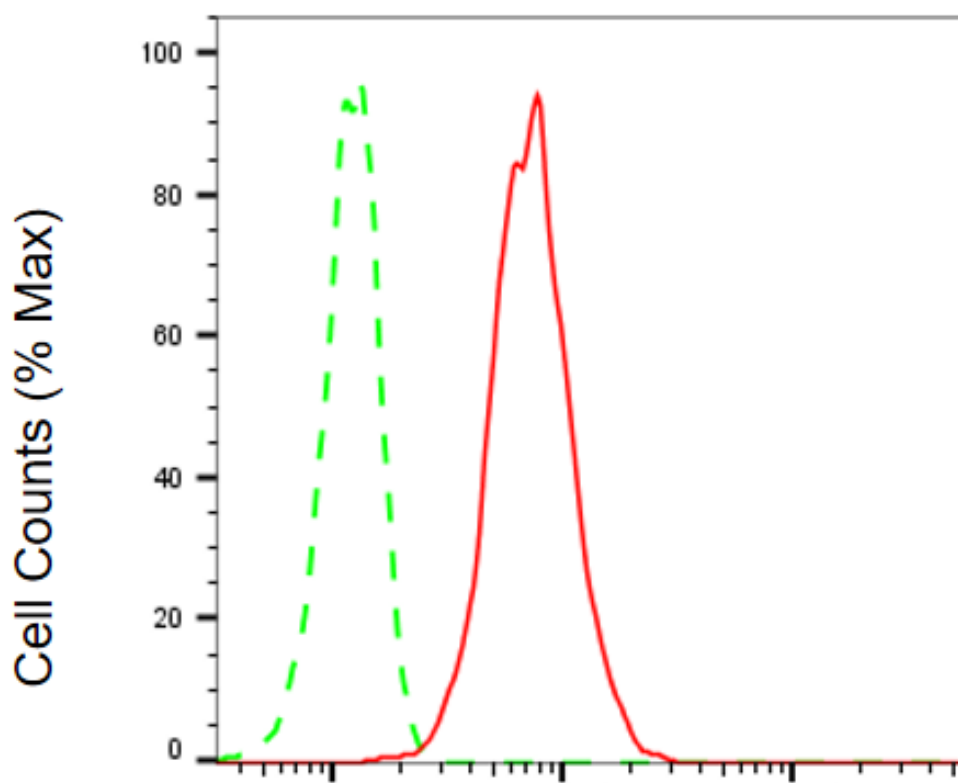
### SUPPORT

SUPPORT@GENUINBIOTECH.COM  
TEL: +1-540-855-7041

### ORDERS

SALES@GENUINBIOTECH.COM  
FAX: +1-540-855-7041

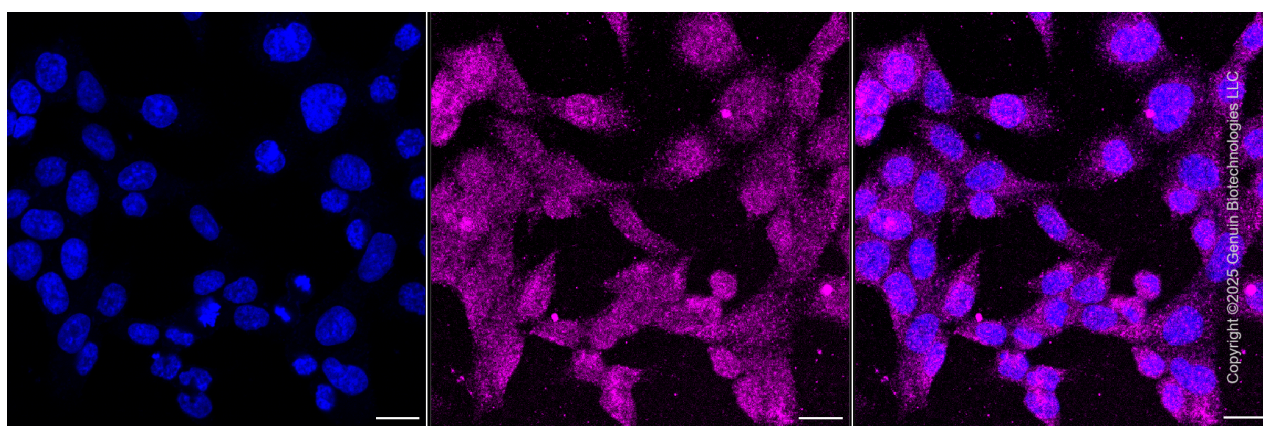
[WWW.GENUINBIOTECH.COM](http://WWW.GENUINBIOTECH.COM)



Copyright ©2025 Genuin Biotechnologies LLC

### E2F transcription factor 4-Alexa Fluor® 647

Flow cytometric analysis of E2F transcription factor 4 expression in HAP-1 cells using anti-E2F transcription factor 4 antibody (Cat#4710, 1:2,000). Green, isotype control; red, E2F transcription factor 4.



Copyright ©2025 Genuin Biotechnologies LLC

Immunocytochemical staining of HAP1 cells with anti-E2F transcription factor 4 antibody (Cat#4710, 1:1,000). Nuclei were stained blue with DAPI; E2F transcription factor 4 was stained

#### SUPPORT

SUPPORT@GENUINBIOTECH.COM  
TEL: +1-540-855-7041

#### ORDERS

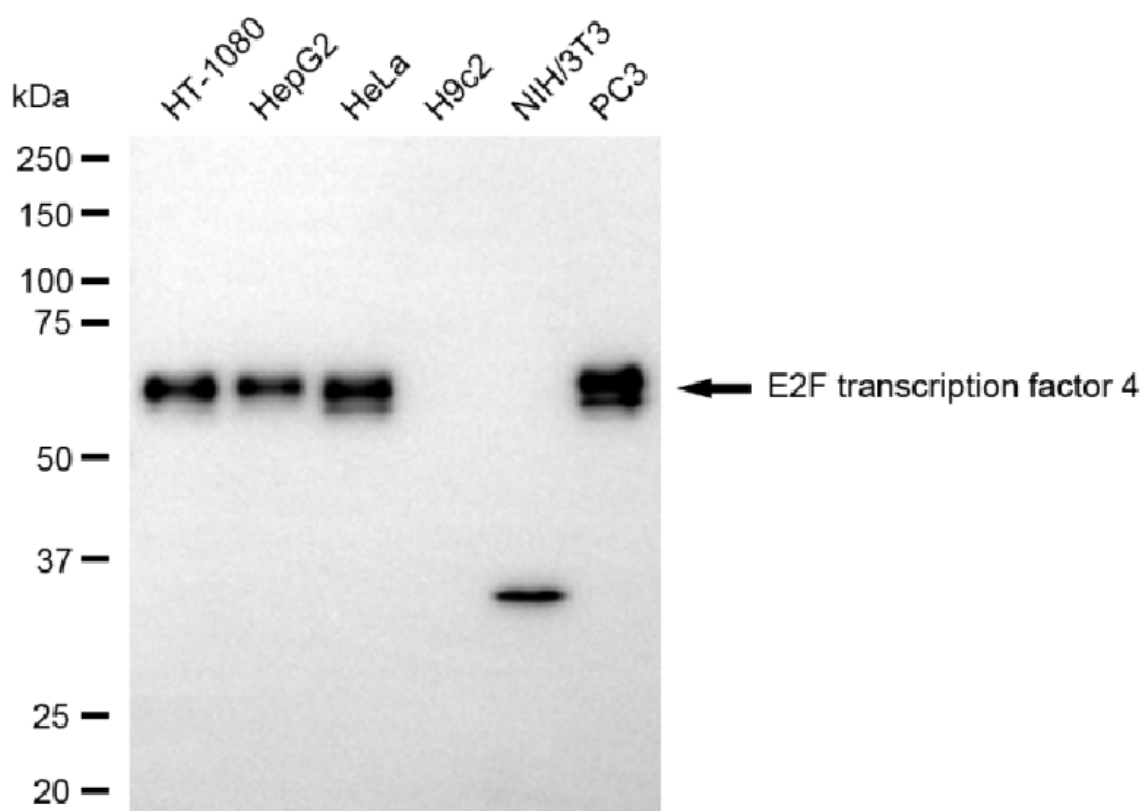
SALES@GENUINBIOTECH.COM  
FAX: +1-540-855-7041

[WWW.GENUINBIOTECH.COM](http://WWW.GENUINBIOTECH.COM)

## Anti-E2F Transcription Factor 4 Rabbit Monoclonal Antibody

PAGE 3

magenta with Alexa Fluor® 647. Images were taken using Leica stellaris 5. Protein abundance based on laser Intensity and smart gain: Medium. Scale bar, 20  $\mu$ m.



Copyright ©2025 Genuin Biotechnologies LLC

Western blotting analysis using anti-E2F transcription factor 4 antibody (Cat#4710). Total cell lysates (30  $\mu$ g) from various cell lines were loaded and separated by SDS-PAGE. The blot was incubated with anti-E2F transcription factor 4 antibody (Cat#4710, 1:5,000) and HRP-conjugated goat anti-rabbit secondary antibody (Cat#201, 1:20,000) respectively. Image was developed using FeQ™ ECL Substrate Kit (Cat#226).

### SUPPORT

SUPPORT@GENUINBIOTECH.COM  
TEL: +1-540-855-7041

### ORDERS

SALES@GENUINBIOTECH.COM  
FAX: +1-540-855-7041

WWW.GENUINBIOTECH.COM