

## Catalog #: 4717

### Aliases

G3BP1; G3BP Stress Granule Assembly Factor 1; G3BP; HDH-VIII; Ras-GTPase-Activating Protein SH3-Domain-Binding Protein; GTPase Activating Protein (SH3 Domain) Binding Protein 1; Ras GTPase-Activating Protein-Binding Protein 1; GAP SH3 Domain-Binding Protein 1; ATP-Dependent DNA Helicase VIII; DNA Helicase VIII; G3BP-1; RasGAP-Associated Endoribonuclease G3BP; GAP Binding Protein; EC 3.6.4.12; EC 3.6.4.13; HDH VIII; EC 3.6.1

### Background

Gene Name: G3BP1

NCBI Gene Entry: [10146](#)

UniProt Entry: [Q13283](#)

### Application Information

Molecular Weight: Predicted, 52 kDa; observed, 68 kDa

Clonality: Rabbit monoclonal antibody

Clone ID: 24GB12595

Species Reactivity: Human, mouse, rat

Applications Tested: Western blotting (WB), flow cytometry (FCM)

### Immunogen

A synthesized peptide derived from human G3BP

### Isotype

Rabbit IgG

### Storage Buffer

Supplied in PBS (pH 7.4) containing 50% glycerol, and 0.02% sodium azide.

### Storage

Store at -20 °C for one year.

### Recommended Dilutions

Western Blotting (WB): 1:1,000-1:5,000

Flow Cytometry (FCM): 1:2,000

---

#### SUPPORT

SUPPORT@GENUINBIOTECH.COM  
TEL: +1-540-855-7041

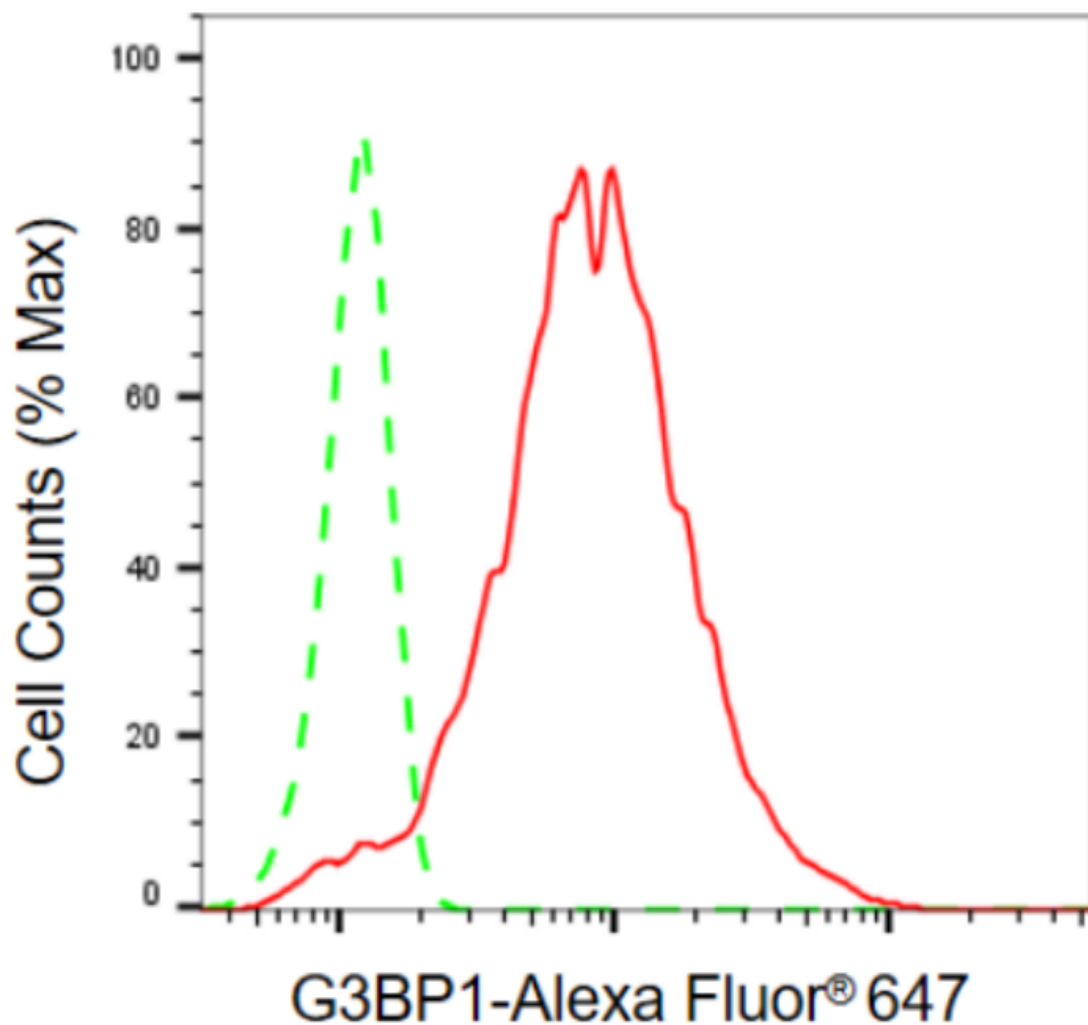
#### ORDERS

SALES@GENUINBIOTECH.COM  
FAX: +1-540-855-7041

[WWW.GENUINBIOTECH.COM](http://WWW.GENUINBIOTECH.COM)

**Note:** This product is for research use only.

## Validation Data



Copyright ©2024 Genuin Biotechnologies LLC

Flow cytometric analysis of G3BP1 expression in HepG2 cells using anti-G3BP1 antibody (Cat#4717, 1:2,000). Green, isotype control; red, G3BP1.

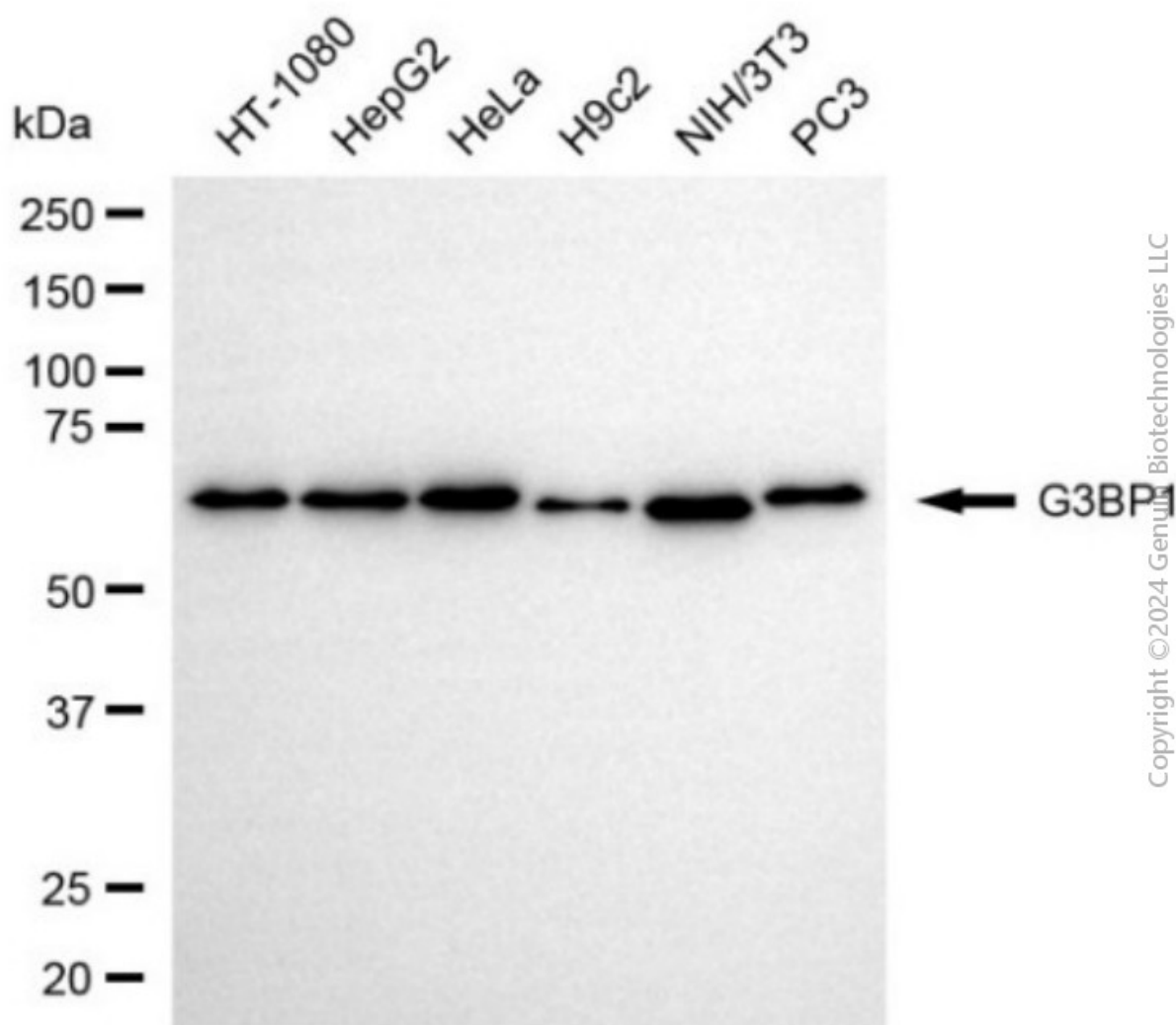
### SUPPORT

SUPPORT@GENUINBIOTECH.COM  
TEL: +1-540-855-7041

### ORDERS

SALES@GENUINBIOTECH.COM  
FAX: +1-540-855-7041

[WWW.GENUINBIOTECH.COM](http://WWW.GENUINBIOTECH.COM)



Western blotting analysis using anti-G3BP1 antibody (Cat#4717). Total cell lysates (30  $\mu$ g) from various cell lines were loaded and separated by SDS-PAGE. The blot was incubated with anti-G3BP1 antibody (Cat#4717, 1:5,000) and HRP-conjugated goat anti-rabbit secondary antibody (Cat#201, 1:20,000) respectively. Image was developed using NaQ<sup>TM</sup> ECL Substrate Kit (Cat#716).