

Anti-Phospho-HSF1 (Ser326) Rabbit Monoclonal Antibody



Catalog #: 4719

Aliases

HSF1; Heat Shock Transcription Factor 1; HSTF1; Heat Shock Factor Protein 1; HSTF; HSF

Background

Gene Name: HSF1

NCBI Gene Entry: [3297](#)

UniProt Entry: [Q00613](#)

Application Information

Molecular Weight: Predicted, 57 kDa; observed, 82 kDa

Clonality: Rabbit monoclonal antibody

Clone ID: 24GB12605

Species Reactivity: Human

Applications Tested: Western blotting (WB), flow cytometry (FCM), immunocytochemistry (IC)

Immunogen

A synthesized peptide derived from human Phospho-HSF1 (Ser326)

Isotype

Rabbit IgG

Storage Buffer

Supplied in PBS (pH 7.4) containing 50% glycerol, and 0.02% sodium azide.

Storage

Store at -20 °C for one year.

Recommended Dilutions

Western Blotting (WB): 1:1,000-1:5,000

Flow Cytometry (FCM): 1:2,000

Immunocytochemistry (IC): 1:100-1:1,000

Note: This product is for research use only.

Validation Data

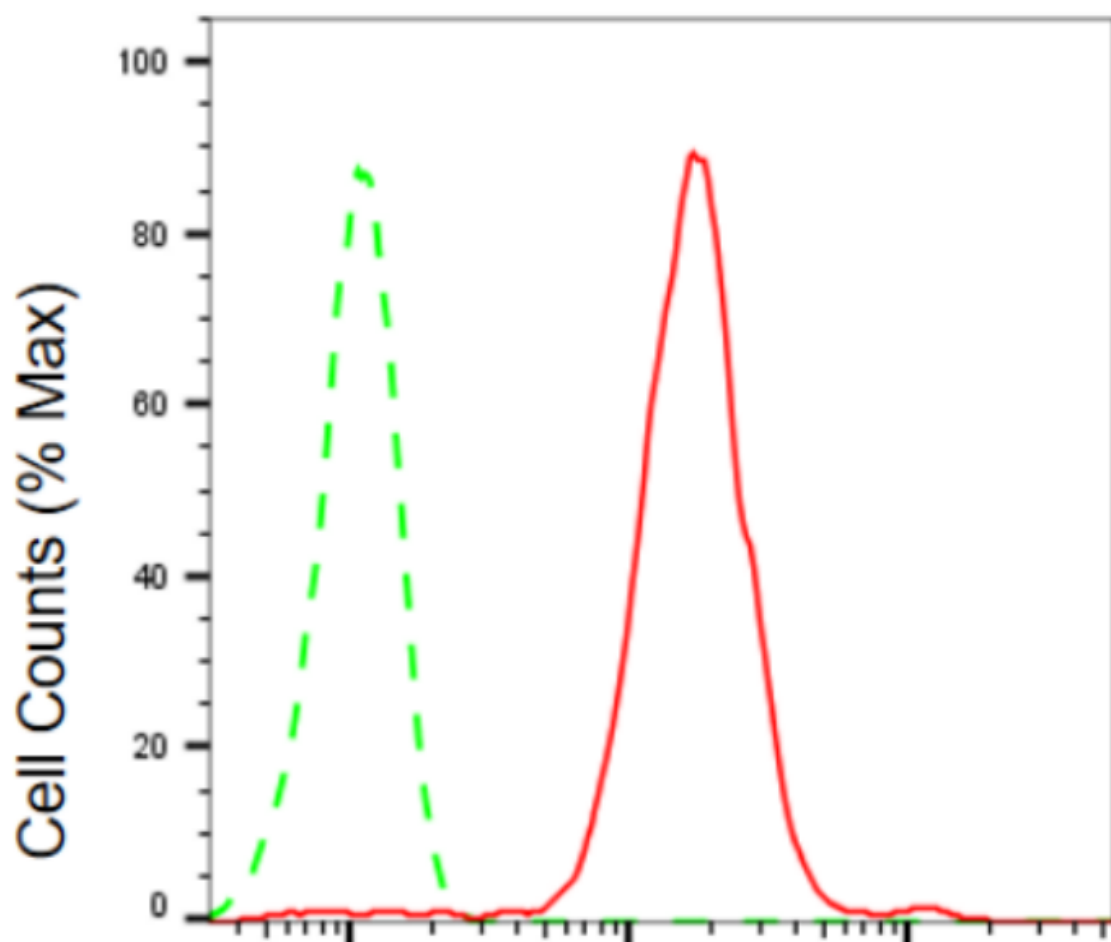
SUPPORT

SUPPORT@GENUINBIOTECH.COM
TEL: +1-540-855-7041

ORDERS

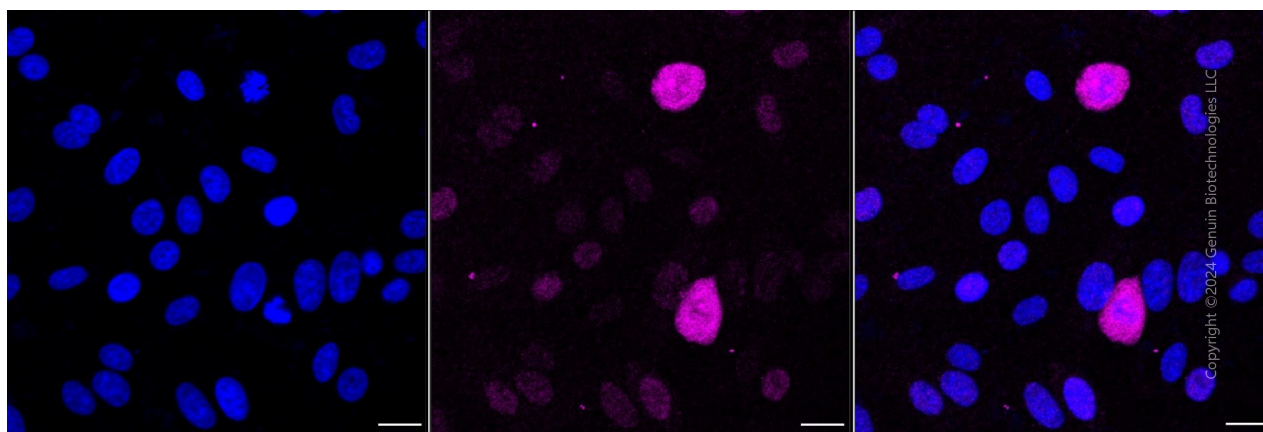
SALES@GENUINBIOTECH.COM
FAX: +1-540-855-7041

WWW.GENUINBIOTECH.COM



Phospho-HSF1 (Ser326)-Alexa Fluor® 647

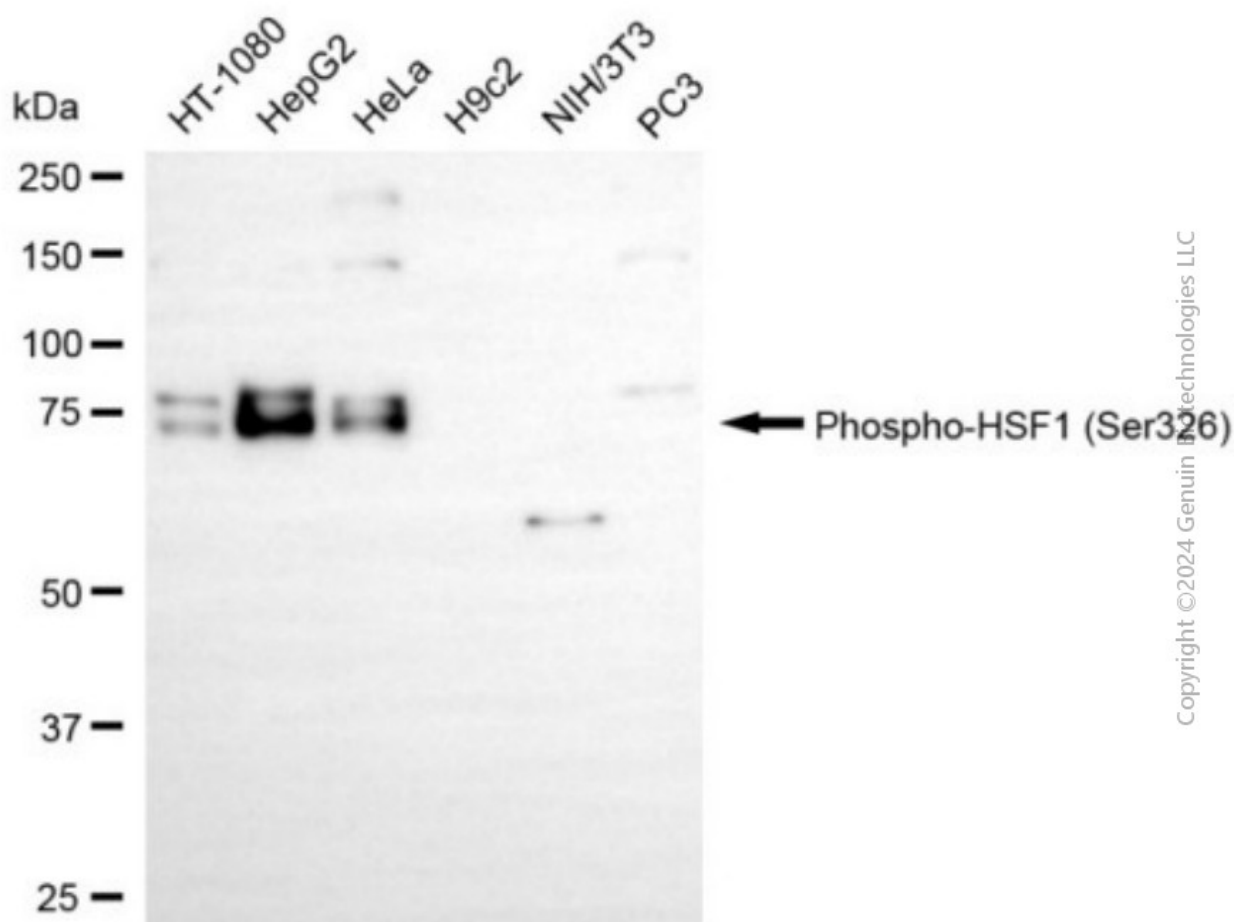
Flow cytometric analysis of phospho-HSF1 (Ser326) expression in HepG2 cells using anti-phospho-HSF1 (Ser326) antibody (Cat#4719, 1:2,000). Green, isotype control; red, phospho-HSF1 (Ser326).



Anti-Phospho-HSF1 (Ser326) Rabbit Monoclonal Antibody

PAGE 3

Immunocytochemical staining of HepG2 cells with anti-Phospho-HSF1 (Ser326) antibody (Cat#4719, 1:1,000). Nuclei were stained blue with DAPI; Phospho-HSF1 (Ser326) was stained magenta with Alexa Fluor® 647. Images were taken using Leica stellaris 5. Protein abundance based on laser Intensity and smart gain: Medium. Scale bar, 20 μ m.



Western blotting analysis using anti-phospho-HSF1 (Ser326) antibody (Cat#4719). Total cell lysates (30 μ g) from various cell lines were loaded and separated by SDS-PAGE. The blot was incubated with anti-phospho-HSF1 (Ser326) antibody (Cat#4719, 1:5,000) and HRP-conjugated goat anti-rabbit secondary antibody (Cat#201, 1:20,000) respectively. Image was developed using NaQ™ ECL Substrate Kit (Cat#716).

SUPPORT

SUPPORT@GENUINBIOTECH.COM
TEL: +1-540-855-7041

ORDERS

SALES@GENUINBIOTECH.COM
FAX: +1-540-855-7041

WWW.GENUINBIOTECH.COM