

# Anti-Integrin alpha 5 Rabbit Monoclonal Antibody



**Catalog #: 4722**

## Aliases

Integrin; Alpha 5 (Fibronectin Receptor, Alpha Polypeptide); VLA5A FNRA; CD49e; Fibronectin Receptor Subunit Alpha; Fibronectin Receptor Alpha Subunit; Integrin Alpha-F; Integrin Alpha-5; VLA-5; Very Late Activation Protein 5; Alpha Subunit; CD49 Antigen-Like Family Member E; CD49e Antigen

## Background

Gene Name: ITGA5

NCBI Gene Entry: [3678](#)

UniProt Entry: [P08648](#)

## Application Information

Molecular Weight: Predicted, 115 kDa; observed, 150 kDa

Clonality: Rabbit monoclonal antibody

Clone ID: 24GB12620

Species Reactivity: Human, mouse, rat

Applications Tested: Western blotting (WB), flow cytometry (FCM), immunocytochemistry (IC)

## Immunogen

A synthesized peptide derived from human Integrin alpha 5

## Isotype

Rabbit IgG

## Storage Buffer

Supplied in PBS (pH 7.4) containing 50% glycerol, and 0.02% sodium azide.

## Storage

Store at -20 °C for one year.

## Recommended Dilutions

Western Blotting (WB): 1:1,000-1:5,000

Flow Cytometry (FCM): 1:2,000

Immunocytochemistry (IC): 1:100-1:1,000

---

### SUPPORT

SUPPORT@GENUINBIOTECH.COM  
TEL: +1-540-855-7041

### ORDERS

SALES@GENUINBIOTECH.COM  
FAX: +1-540-855-7041

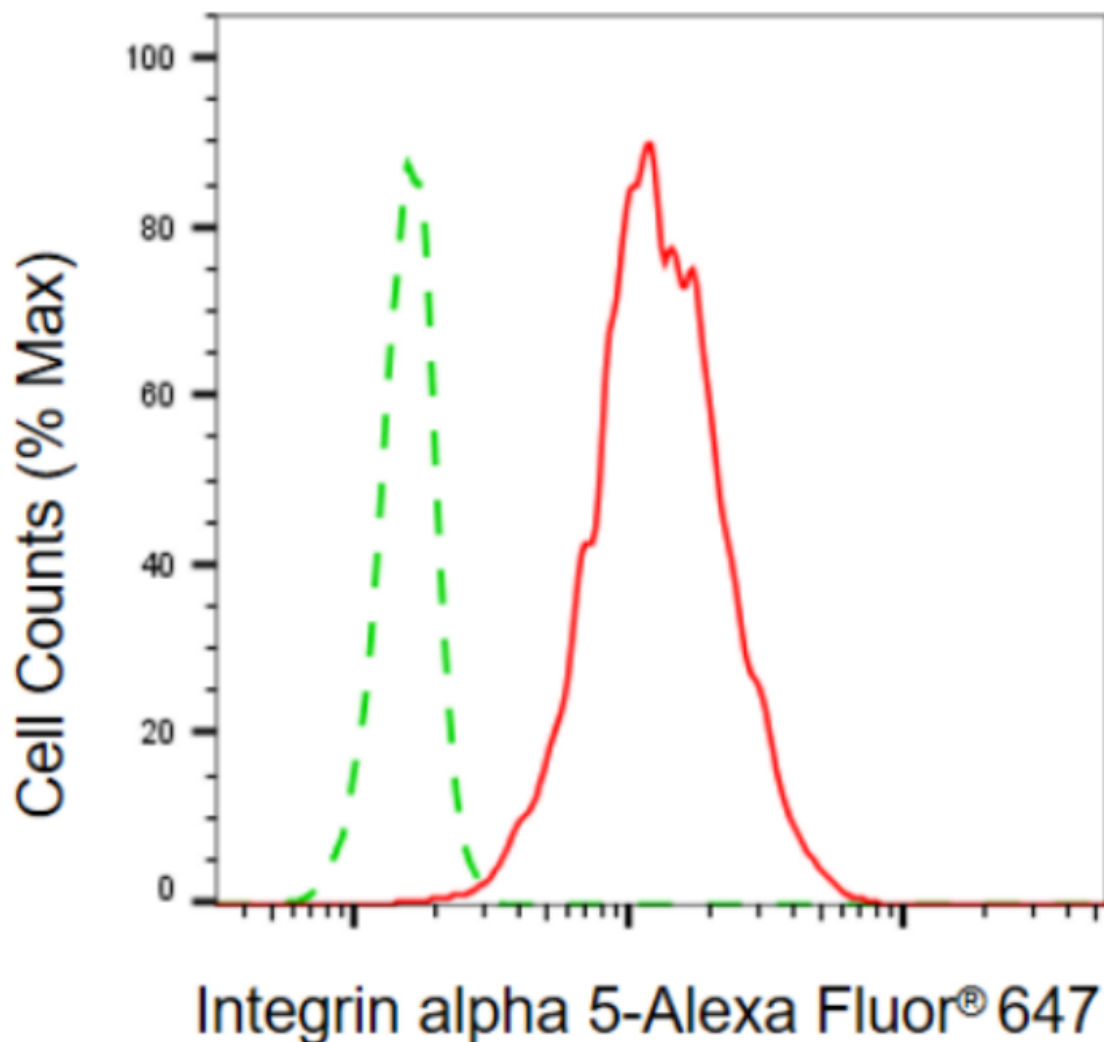
[WWW.GENUINBIOTECH.COM](http://WWW.GENUINBIOTECH.COM)

# Anti-Integrin alpha 5 Rabbit Monoclonal Antibody

PAGE 2

**Note:** This product is for research use only.

## Validation Data



Copyright ©2024 Genuin Biotechnologies LLC

Immunocytochemical staining of C2C12 cells with anti-ITGA5 antibody(Cat#4722, 1:1,000) . Nuclei were stained blue with DAPI; ITGA5 was stained magenta with Alexa Fluor® 647. Images were taken using Leica stellaris 5. Protein abundance based on laser Intensity and smart gain: Medium. Scale bar, 20  $\mu$ m.

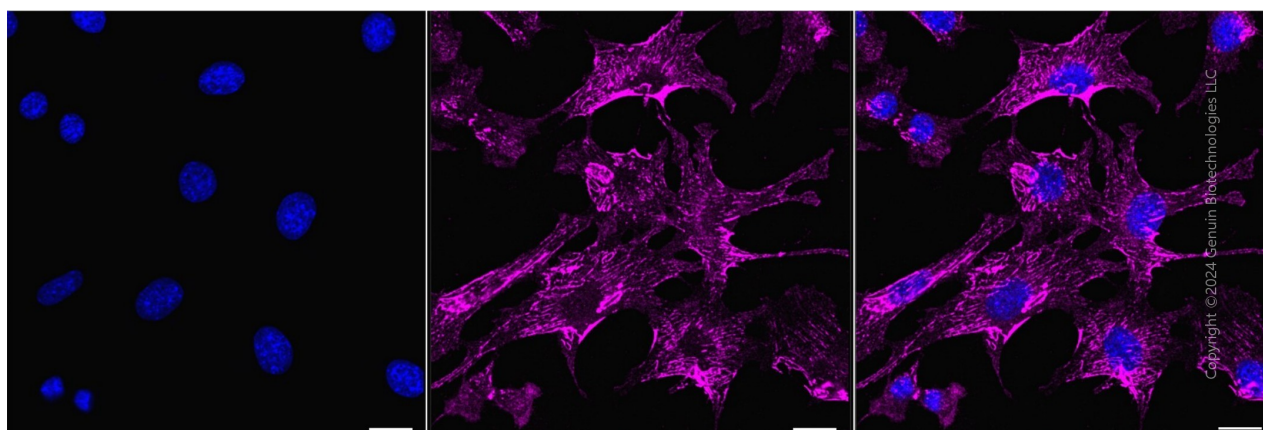
### SUPPORT

SUPPORT@GENUINBIOTECH.COM  
TEL: +1-540-855-7041

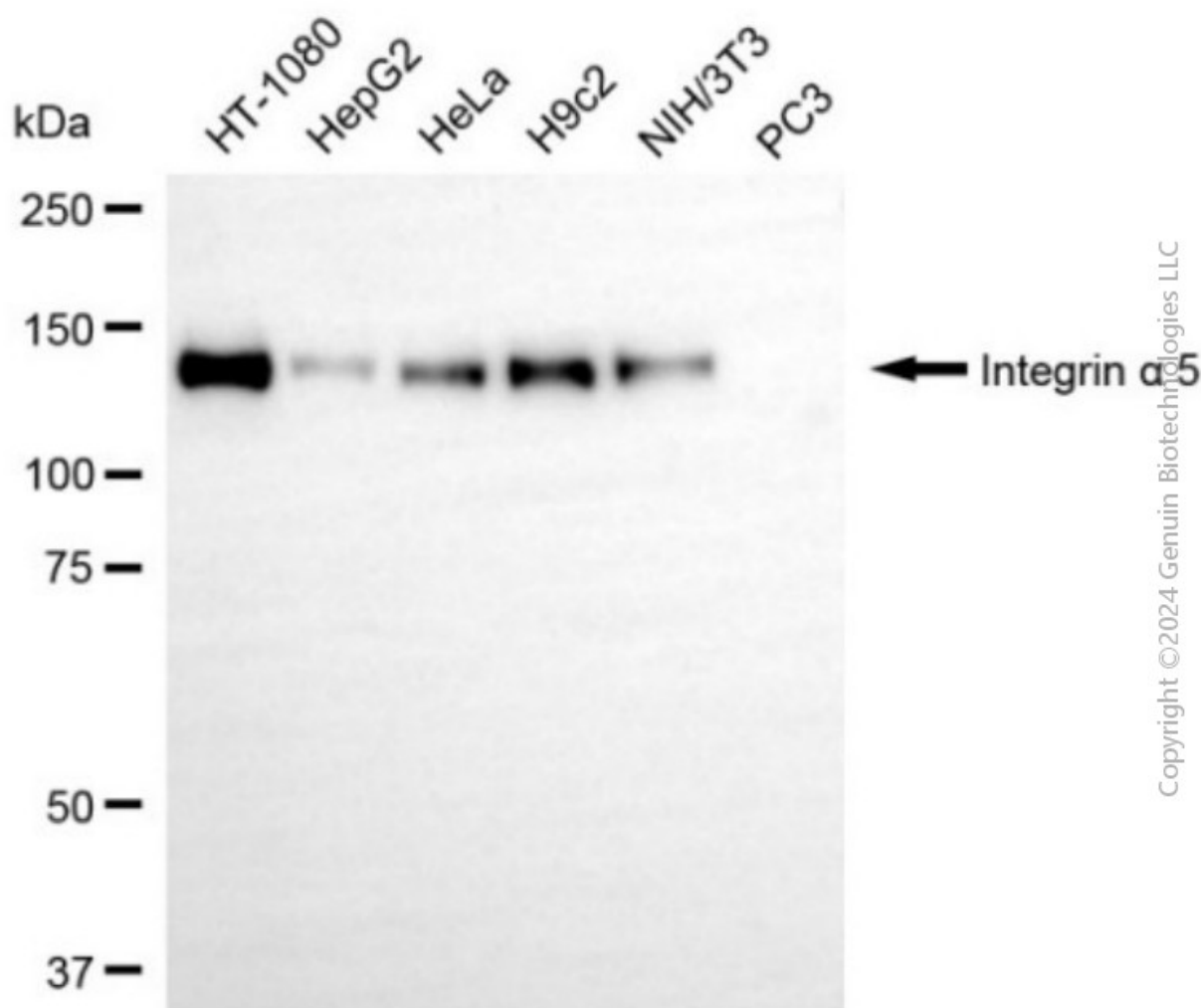
### ORDERS

SALES@GENUINBIOTECH.COM  
FAX: +1-540-855-7041

[WWW.GENUINBIOTECH.COM](http://WWW.GENUINBIOTECH.COM)



Flow cytometric analysis of integrin alpha 5 expression in C2C12 cells using anti-integrin alpha 5 antibody (Cat#4722, 1:2,000). Green, isotype control; red, integrin alpha 5.



Western blotting analysis using anti-integrin alpha 5 antibody (Cat#4722). Total cell lysates (30

## **Anti-Integrin alpha 5 Rabbit Monoclonal Antibody**

PAGE 4

μg) from various cell lines were loaded and separated by SDS-PAGE. The blot was incubated with anti-integrin alpha 5 antibody (Cat#4722, 1:5,000) and HRP-conjugated goat anti-rabbit secondary antibody (Cat#201, 1:20,000) respectively. Image was developed using NaQ™ ECL Substrate Kit (Cat#716).

---

### **SUPPORT**

SUPPORT@GENUINBIOTECH.COM  
TEL: +1-540-855-7041

### **ORDERS**

SALES@GENUINBIOTECH.COM  
FAX: +1-540-855-7041

**WWW.GENUINBIOTECH.COM**