

Anti-PI3 Kinase p110 beta Rabbit Monoclonal Antibody



Catalog #: 4733

Aliases

Phosphatidylinositol-4,5-Bisphosphate 3-Kinase; Catalytic SubunitBeta; PI3K; PIK3C1; PI3KBETA; Phosphoinositide-3-Kinase; Catalytic; Beta Polypeptide; Phosphatidylinositol 4,5-Bisphosphate 3-Kinase Catalytic Subunit Beta Isoform; Phosphatidylinositol 4,5-Bisphosphate 3-Kinase 110 KDa Catalytic Subunit Beta; Phosphatidylinositol-4,5-Bisphosphate 3-Kinase 110 KDa Catalytic Subunit Beta; PtdIns-3-Kinase Subunit Beta; PI3-Kinase P110 Subunit Beta; PtdIns-3-Kinase Subunit P110-Beta; PtdIns-3-Kinase P110; PI3K-beta; PI3Kbeta; PI3-Kinase Subunit Beta; p110beta; EC 2.7.1.153; PI3KCB; P110BETA; EC 2.7.1

Background

Gene Name: PIK3CB

NCBI Gene Entry: [5291](#)

UniProt Entry: [P42338](#)

Application Information

Molecular Weight: Predicted, 123 kDa; observed, 110 kDa

Clonality: Rabbit monoclonal antibody

Clone ID: 24GB12675

Species Reactivity: Human, rat

Applications Tested: Western blotting (WB), flow cytometry (FCM), immunocytochemistry (IC)

Immunogen

A synthesized peptide derived from human PI3 Kinase p110 beta

Isotype

Rabbit IgG

Storage Buffer

Supplied in PBS (pH 7.4) containing 50% glycerol, and 0.02% sodium azide.

Storage

Store at -20 °C for one year.

Recommended Dilutions

Western Blotting (WB): 1:1,000-1:5,000

Flow Cytometry (FCM): 1:2,000

SUPPORT

SUPPORT@GENUINBIOTECH.COM
TEL: +1-540-855-7041

ORDERS

SALES@GENUINBIOTECH.COM
FAX: +1-540-855-7041

WWW.GENUINBIOTECH.COM

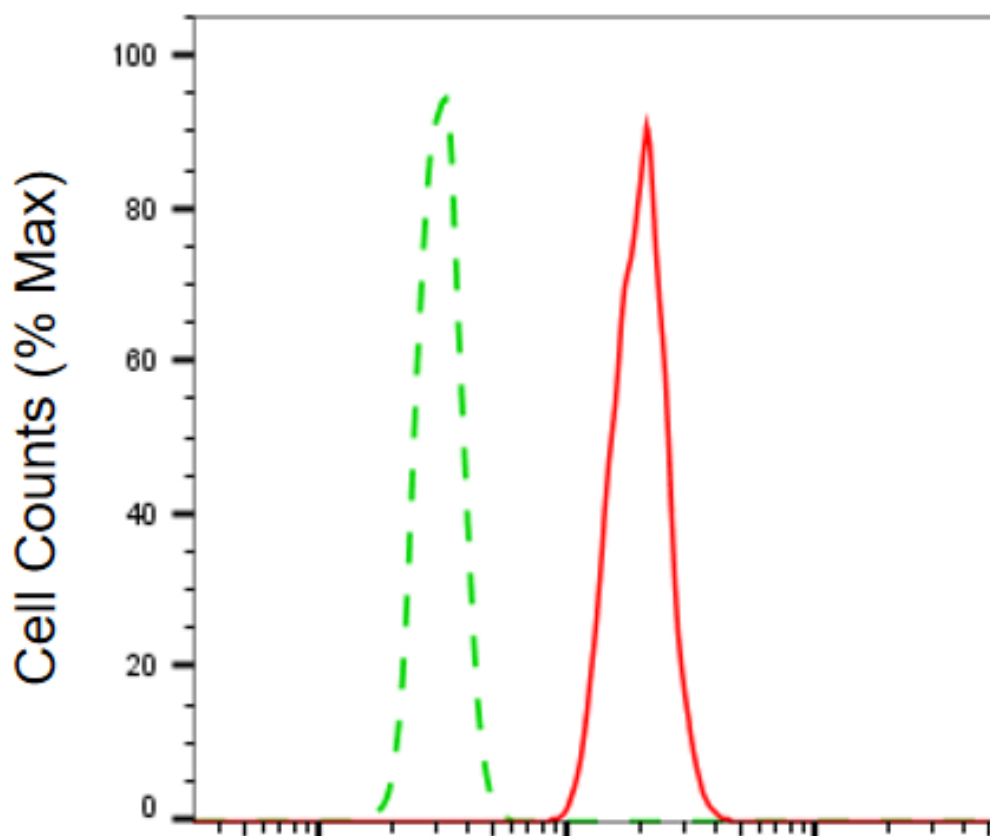
Anti-PI3 Kinase p110 beta Rabbit Monoclonal Antibody

PAGE 2

Immunocytochemistry (IC): 1:100-1:1,000

Note: This product is for research use only.

Validation Data



Copyright ©2025 Genuin Biotechnologies LLC

PI3 Kinase p110 beta-Alexa Fluor® 647

Flow cytometric analysis of PI3 Kinase p110 beta expression in HT-1080 cells using anti-PI3 Kinase p110 beta antibody (Cat#4733, 1:2,000). Green, isotype control; red, PI3 Kinase p110 beta.

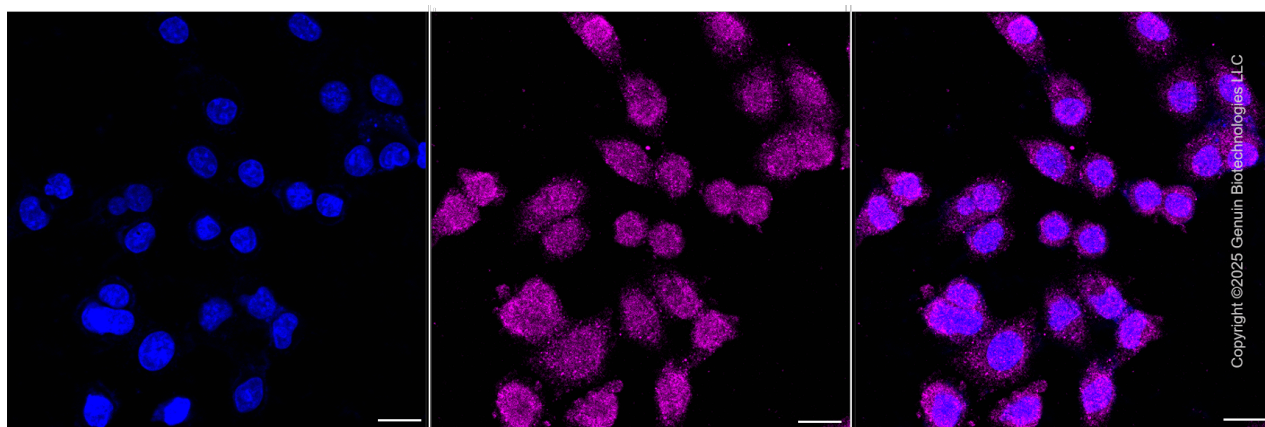
SUPPORT

SUPPORT@GENUINBIOTECH.COM
TEL: +1-540-855-7041

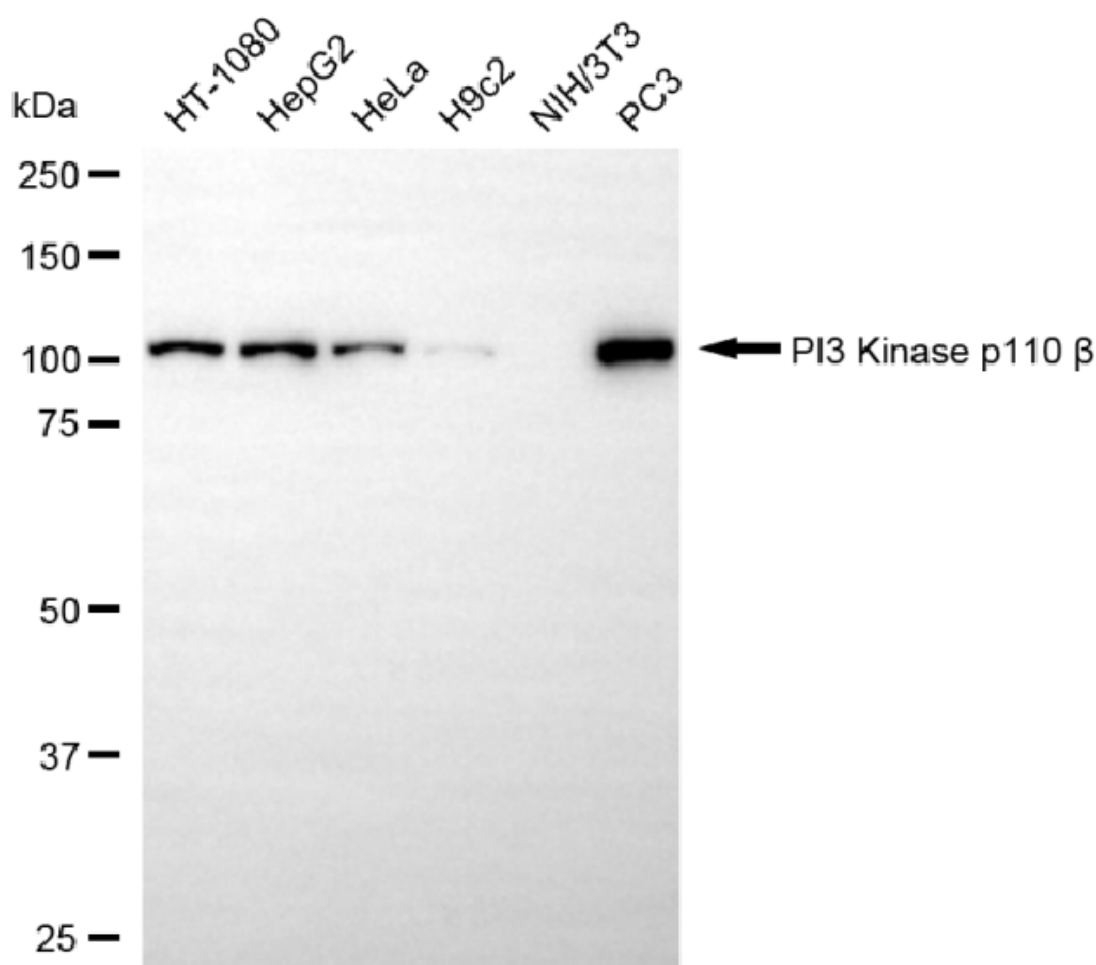
ORDERS

SALES@GENUINBIOTECH.COM
FAX: +1-540-855-7041

WWW.GENUINBIOTECH.COM



Immunocytochemical staining of HepG2 cells with anti-PI3 Kinase p110 beta antibody (Cat#4733, 1:1,000) . Nuclei were stained blue with DAPI; PI3 Kinase p110 beta was stained magenta with Alexa Fluor® 647. Images were taken using Leica stellaris 5. Protein abundance based on laser Intensity and smart gain: Medium . Scale bar, 20 μ m.



Western blotting analysis using anti-PI3 Kinase p110 beta antibody (Cat#4733). Total cell lysates

SUPPORT

SUPPORT@GENUINBIOTECH.COM
TEL: +1-540-855-7041

ORDERS

SALES@GENUINBIOTECH.COM
FAX: +1-540-855-7041

WWW.GENUINBIOTECH.COM

Anti-PI3 Kinase p110 beta Rabbit Monoclonal Antibody

PAGE 4

(30 µg) from various cell lines were loaded and separated by SDS-PAGE. The blot was incubated with anti-PI3 Kinase p110 beta antibody (Cat#4733, 1:5,000) and HRP-conjugated goat anti-rabbit secondary antibody (Cat#201, 1:20,000) respectively. Image was developed using NaQ™ ECL Substrate Kit (Cat#716).

SUPPORT

SUPPORT@GENUINBIOTECH.COM
TEL: +1-540-855-7041

ORDERS

SALES@GENUINBIOTECH.COM
FAX: +1-540-855-7041

WWW.GENUINBIOTECH.COM