

**Catalog #: 4744**

## Aliases

STAU1; Staufen Double-Stranded RNA Binding Protein 1; PPP1R150; STAU; Double-Stranded RNA-Binding Protein Staufen Homolog 1; Protein Phosphatase 1, Regulatory Subunit 150; Staufen, RNA Binding Protein, Homolog 1 (Drosophila); Staufen (Drosophila, RNA-Binding Protein); Staufen, RNA Binding Protein (Drosophila); Staufen, RNA Binding Protein, Homolog 1

## Background

Gene Name: STAU1

NCBI Gene Entry: [6780](#)

UniProt Entry: [O95793](#)

## Application Information

Molecular Weight: Predicted, 63 kDa; observed, 63 kDa

Clonality: Rabbit monoclonal antibody

Clone ID: 24GB12730

Species Reactivity: Human, mouse, rat

Applications Tested: Western blotting (WB), flow cytometry (FCM), immunocytochemistry (IC)

## Immunogen

A synthesized peptide derived from human Staufen

## Isotype

Rabbit IgG

## Storage Buffer

Supplied in PBS (pH 7.4) containing 50% glycerol, and 0.02% sodium azide.

## Storage

Store at -20 °C for one year.

## Recommended Dilutions

Western Blotting (WB): 1:1,000-1:5,000

Flow Cytometry (FCM): 1:2,000

Immunocytochemistry (IC): 1:100-1:1,000

---

### SUPPORT

SUPPORT@GENUINBIOTECH.COM  
TEL: +1-540-855-7041

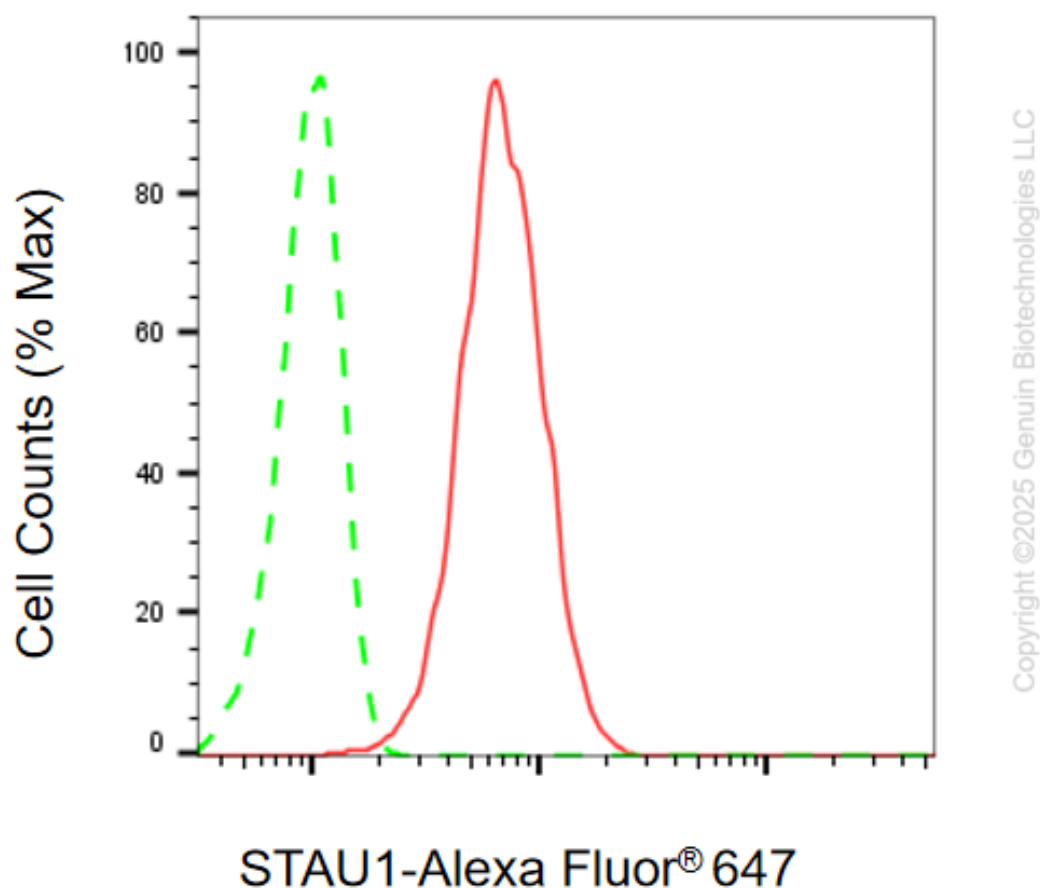
### ORDERS

SALES@GENUINBIOTECH.COM  
FAX: +1-540-855-7041

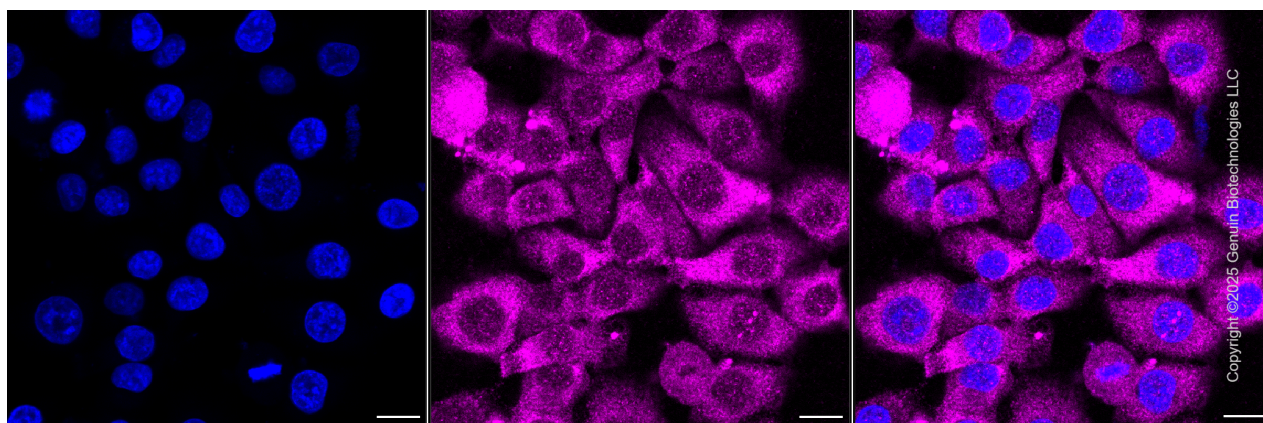
[WWW.GENUINBIOTECH.COM](http://WWW.GENUINBIOTECH.COM)

**Note:** This product is for research use only.

## Validation Data



Flow cytometric analysis of STAU1 expression in HT-1080 cells using anti-STAU1 antibody (Cat#4744, 1:2,000). Green, isotype control; red, STAU1.



Immunocytochemical staining of HT-1080 cells with anti-STAU1 antibody (Cat#4744, 1:1,000) .

### SUPPORT

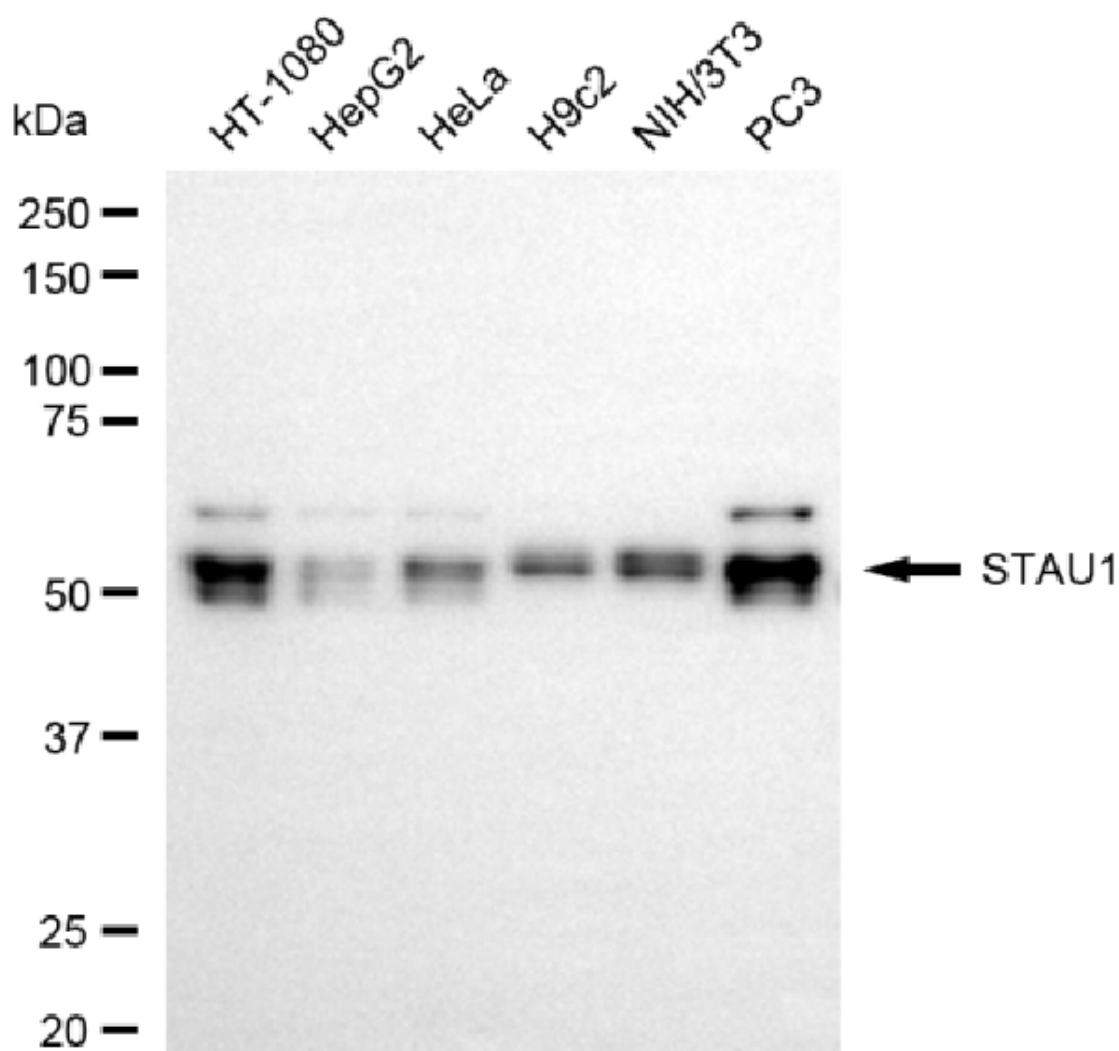
SUPPORT@GENUINBIOTECH.COM  
TEL: +1-540-855-7041

### ORDERS

SALES@GENUINBIOTECH.COM  
FAX: +1-540-855-7041

[WWW.GENUINBIOTECH.COM](http://WWW.GENUINBIOTECH.COM)

Nuclei were stained blue with DAPI; STAU1 was stained magenta with Alexa Fluor® 647. Images were taken using Leica stellaris 5. Protein abundance based on laser Intensity and smart gain: Medium. Scale bar, 20 µm.



Copyright ©2025 Genuin Biotechnologies LLC

Western blotting analysis using anti-STAU1 antibody (Cat#4744). Total cell lysates (30 µg) from various cell lines were loaded and separated by SDS-PAGE. The blot was incubated with anti-STAU1 antibody (Cat#4744, 1:5,000) and HRP-conjugated goat anti-rabbit secondary antibody (Cat#201, 1:20,000) respectively. Image was developed using NaQ™ ECL Substrate Kit (Cat#716).