

Anti-Phospho-NDRG1 (Ser330) Rabbit Monoclonal Antibody



Catalog #: 4749

Aliases

NDRG1; N-Myc Downstream Regulated 1; DRG1; RTP; CAP43; TDD5; NDR1; Reducing Agents And Tunicamycin-Responsive Protein; N-Myc Downstream-Regulated Gene 1 Protein; Nickel-Specific Induction Protein Cap43; Differentiation-Related Gene 1 Protein; Protein NDRG1; DRG-1; Protein Regulated By Oxygen-1; PROXY1; CMT4D; HMSNL; RIT42; TARG1; Rit42; NMSL; GC4

Background

Gene Name: NDRG1

NCBI Gene Entry: [10397](#)

UniProt Entry: [Q92597](#)

Application Information

Molecular Weight: Predicted, 43 kDa; observed, 43 kDa

Clonality: Rabbit monoclonal antibody

Clone ID: 24GB12755

Species Reactivity: Human, mouse

Applications Tested: Western blotting (WB), flow cytometry (FCM), immunocytochemistry (IC)

Immunogen

A synthesized peptide derived from human Phospho-NDRG1 (Ser330)

Isotype

Rabbit IgG

Storage Buffer

Supplied in PBS (pH 7.4) containing 50% glycerol, and 0.02% sodium azide.

Storage

Store at -20 °C for one year.

Recommended Dilutions

Western Blotting (WB): 1:1,000-1:5,000

Flow Cytometry (FCM): 1:2,000

Immunocytochemistry (IC): 1:100-1:1,000

SUPPORT

SUPPORT@GENUINBIOTECH.COM
TEL: +1-540-855-7041

ORDERS

SALES@GENUINBIOTECH.COM
FAX: +1-540-855-7041

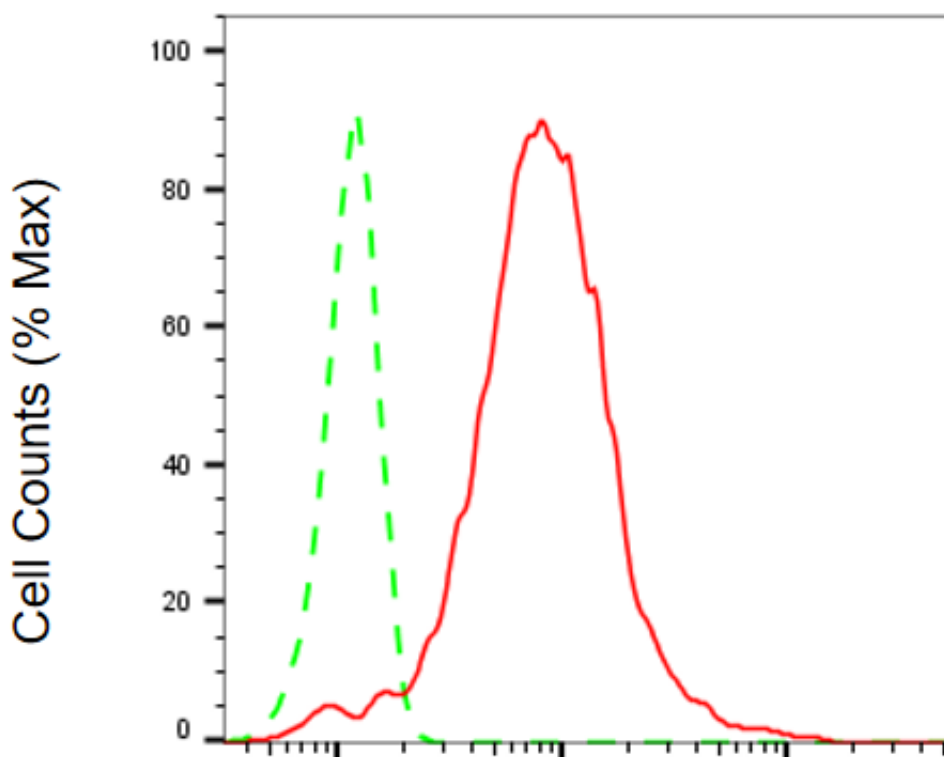
WWW.GENUINBIOTECH.COM

Anti-Phospho-NDRG1 (Ser330) Rabbit Monoclonal Antibody

PAGE 2

Note: This product is for research use only.

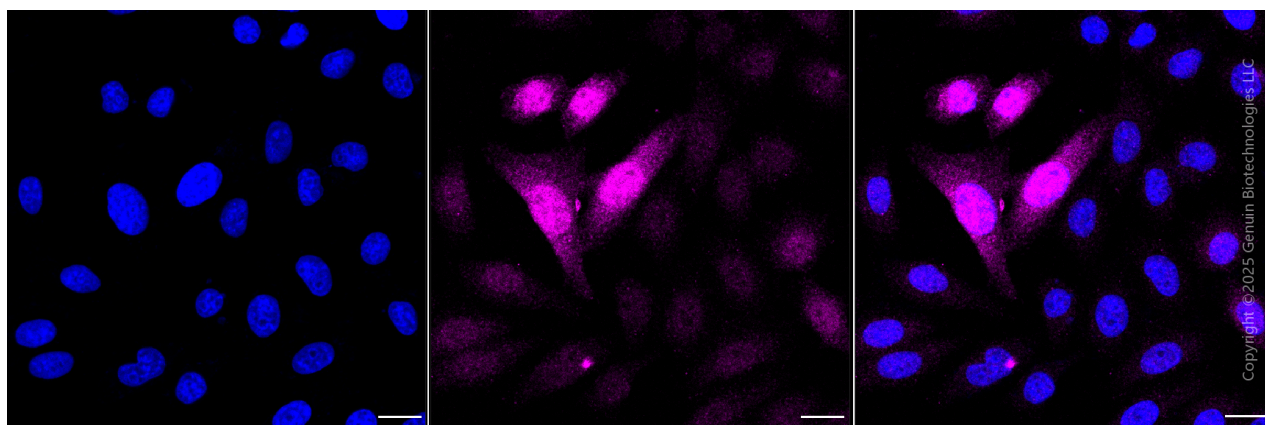
Validation Data



Copyright ©2025 Genuin Biotechnologies LLC

Phospho-NDRG1 (Ser330)-Alexa Fluor® 647

Flow cytometric analysis of Phospho-NDRG1 (Ser330) expression in HepG2 cells using anti-Phospho-NDRG1 (Ser330) antibody (Cat#4749, 1:2,000). Green, isotype control; red, Phospho-NDRG1 (Ser330).



Copyright ©2025 Genuin Biotechnologies LLC

SUPPORT

SUPPORT@GENUINBIOTECH.COM
TEL: +1-540-855-7041

ORDERS

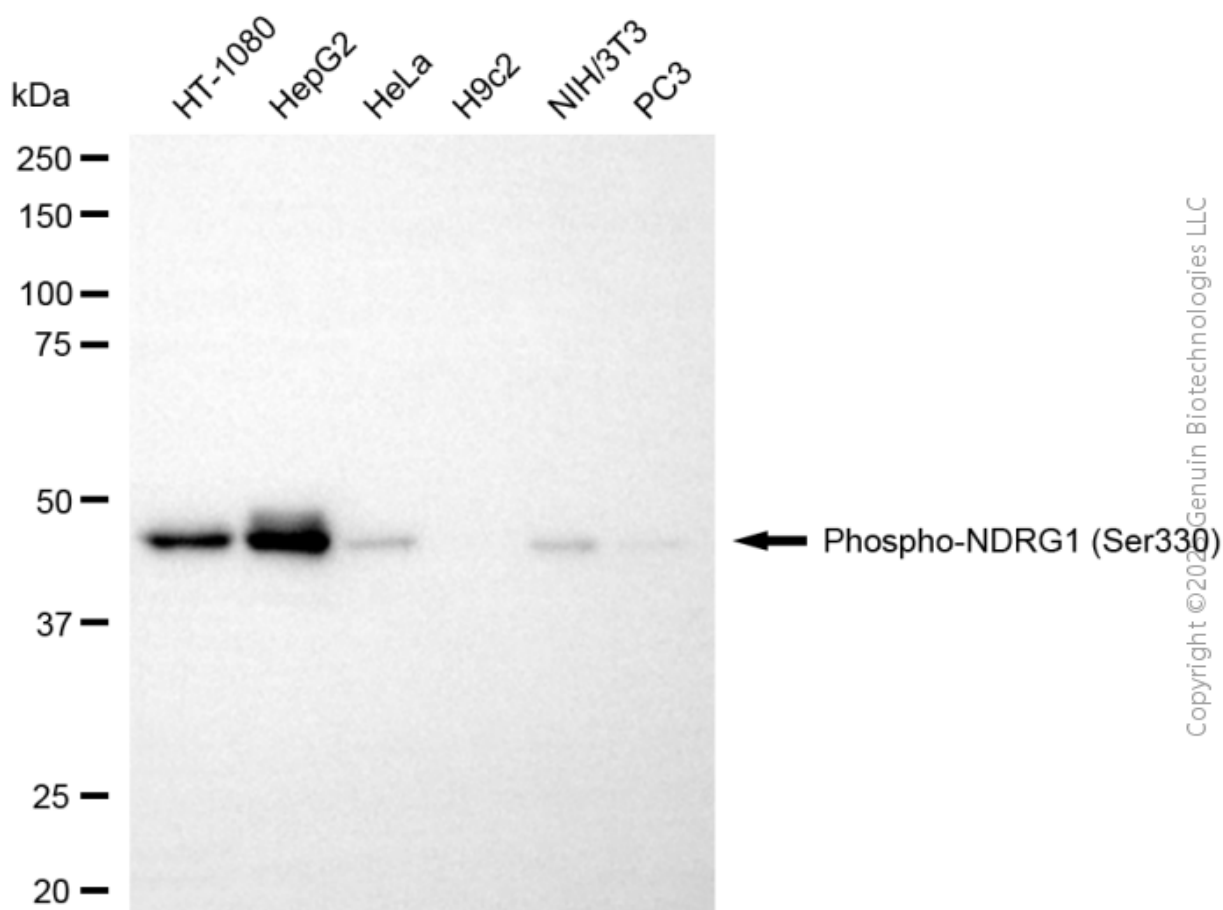
SALES@GENUINBIOTECH.COM
FAX: +1-540-855-7041

WWW.GENUINBIOTECH.COM

Anti-Phospho-NDRG1 (Ser330) Rabbit Monoclonal Antibody

PAGE 3

Immunocytochemical staining of HepG2 cells with anti-Phospho-NDRG1 (Ser330) antibody (Cat#4749, 1:1,000). Nuclei were stained blue with DAPI; Phospho-NDRG1 (Ser330) was stained magenta with Alexa Fluor® 647. Images were taken using Leica stellaris 5. Protein abundance based on laser Intensity and smart gain: Medium. Scale bar, 20 μ m.



Western blotting analysis using anti-phospho-NDRG1 (Ser330) antibody (Cat#4749). Total cell lysates (30 μ g) from various cell lines were loaded and separated by SDS-PAGE. The blot was incubated with anti-phospho-NDRG1 (Ser330) antibody (Cat#4749, 1:5,000) and HRP-conjugated goat anti-rabbit secondary antibody (Cat#201, 1:20,000) respectively. Image was developed using FeQ™ ECL Substrate Kit (Cat#226).

SUPPORT

SUPPORT@GENUINBIOTECH.COM
TEL: +1-540-855-7041

ORDERS

SALES@GENUINBIOTECH.COM
FAX: +1-540-855-7041

WWW.GENUINBIOTECH.COM