

Anti-BCL10 Immune Signaling Adaptor Rabbit Monoclonal Antibody



Catalog #: 4753

Aliases

BCL10; BCL10 Immune Signaling Adaptor; CIPER; C-E10; ME10; CLAP; CARMEN; CED-3/ ICH-1 Prodomain Homologous E10-Like Regulator; Mammalian CARD-Containing Adapter Molecule E10; CARD-Containing Molecule Enhancing NF-Kappa-B; Caspase-Recruiting Domain-Containing Protein; CARD-Containing Apoptotic Signaling Protein; CARD Containing Molecule Enhancing NF-KB; CARD-Containing Proapoptotic Protein; CARD-Like Apoptotic Protein; B-Cell Lymphoma/Leukemia 10; Cellular Homolog Of VCARMEN; B Cell CLL/ Lymphoma 10; Cellular-E10; CCARMEN; HCLAP; BCL10, Immune Signaling Adaptor; B-Cell; CLL/Lymphoma 10; Bcl-10; IMD37

Background

Gene Name: BCL10

NCBI Gene Entry: [8915](#)

UniProt Entry: [O95999](#)

Application Information

Molecular Weight: Predicted, 26 kDa; observed, 26 kDa

Clonality: Rabbit monoclonal antibody

Clone ID: 24GB12770

Species Reactivity: Human

Applications Tested: Western blotting (WB), flow cytometry (FCM), immunocytochemistry (IC)

Immunogen

Recombinant protein of human Bcl10

Isotype

Rabbit IgG

Storage Buffer

Supplied in PBS (pH 7.4) containing 50% glycerol, and 0.02% sodium azide.

Storage

Store at -20 °C for one year.

Recommended Dilutions

Western Blotting (WB): 1:1,000-1:5,000

SUPPORT

SUPPORT@GENUINBIOTECH.COM
TEL: +1-540-855-7041

ORDERS

SALES@GENUINBIOTECH.COM
FAX: +1-540-855-7041

WWW.GENUINBIOTECH.COM

Anti-BCL10 Immune Signaling Adaptor Rabbit Monoclonal Antibody

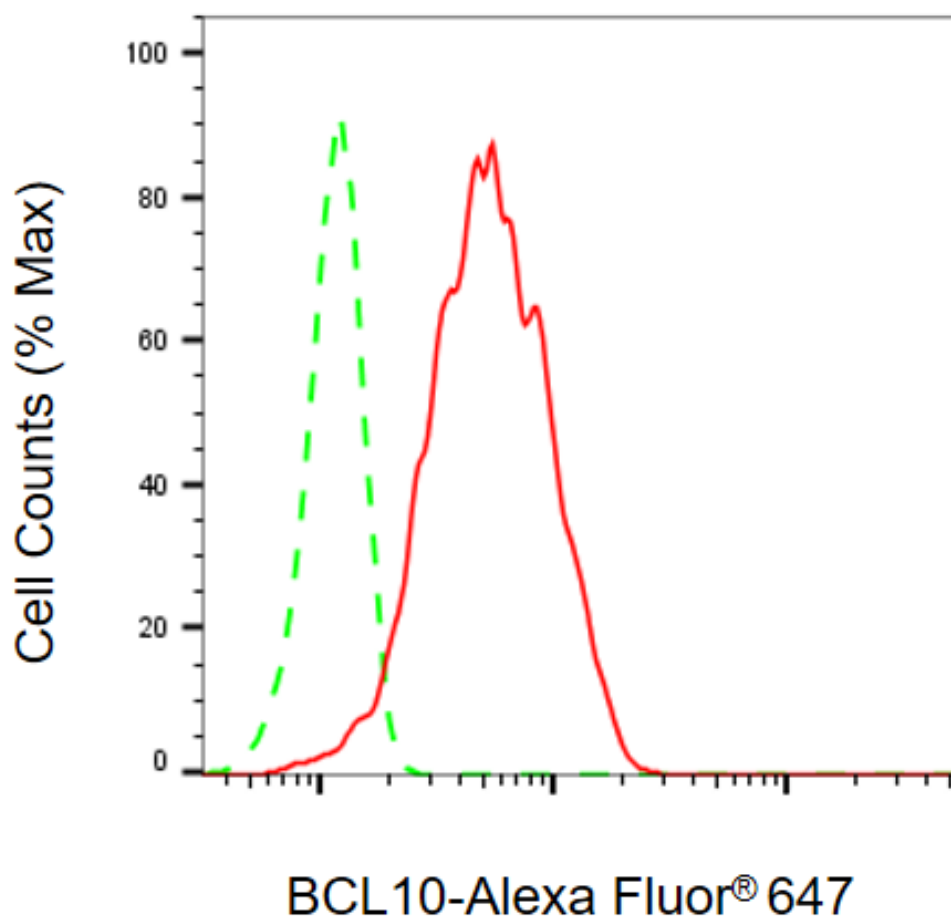
PAGE 2

Flow Cytometry (FCM): 1:2,000

Immunocytochemistry (IC): 1:100-1:1,000

Note: This product is for research use only.

Validation Data



Flow cytometric analysis of BCL10 expression in HepG2 cells using anti-BCL10 antibody (Cat#4753, 1:2,000). Green, isotype control; red, BCL10.

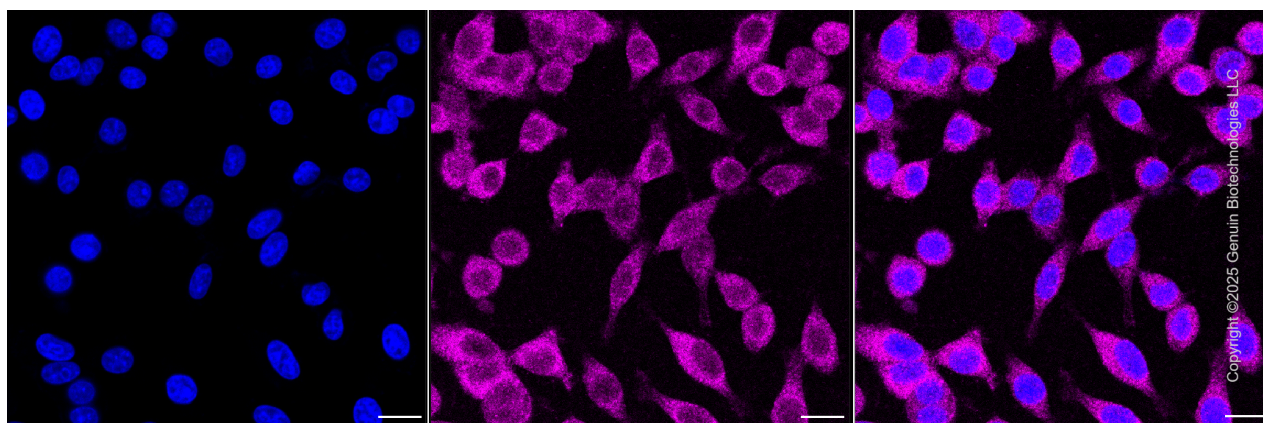
SUPPORT

SUPPORT@GENUINBIOTECH.COM
TEL: +1-540-855-7041

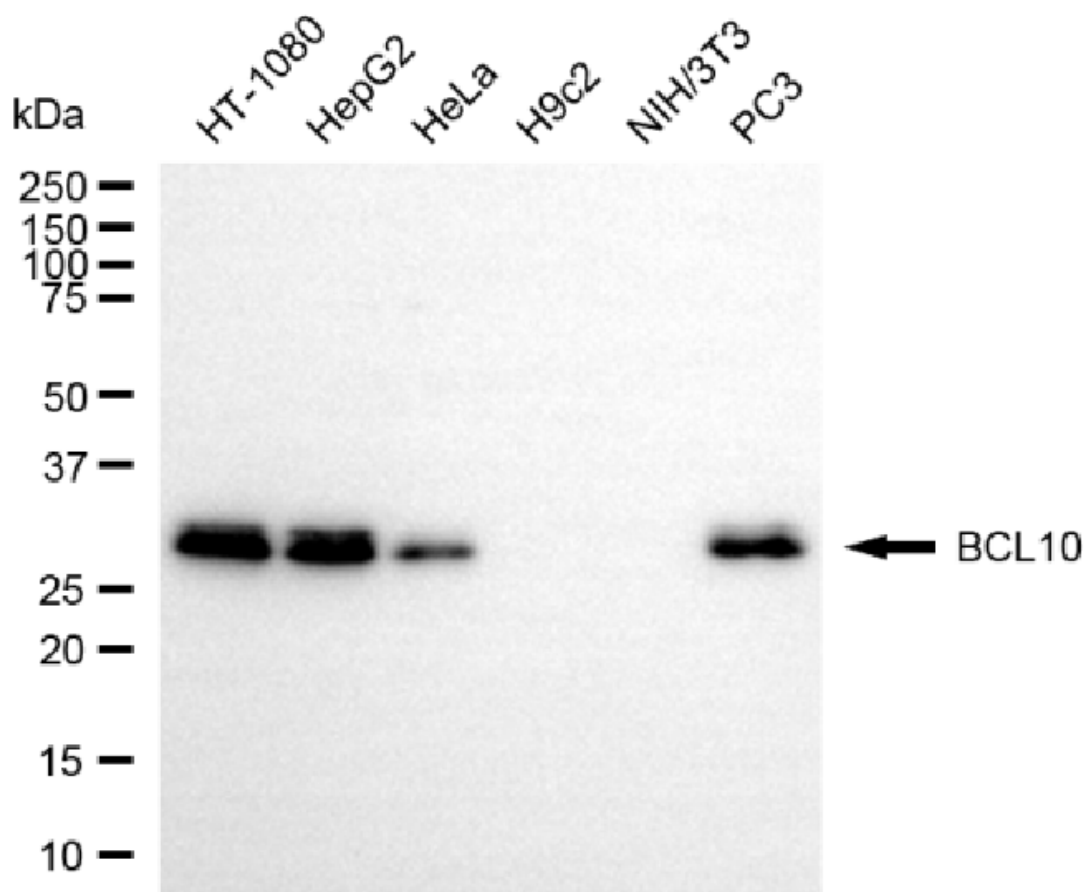
ORDERS

SALES@GENUINBIOTECH.COM
FAX: +1-540-855-7041

WWW.GENUINBIOTECH.COM



Immunocytochemical staining of HepG2 cells with anti-BCL10 antibody (Cat#4753, 1:1,000) . Nuclei were stained blue with DAPI; BCL10 was stained magenta with Alexa Fluor® 647. Images were taken using Leica stellaris 5. Protein abundance based on laser Intensity and smart gain: Medium. Scale bar, 20 μ m.



Western blotting analysis using anti-BCL10 antibody (Cat#4753). Total cell lysates (30 μ g) from various cell lines were loaded and separated by SDS-PAGE. The blot was incubated with anti-BCL10 antibody (Cat#4753, 1:5,000) and HRP-conjugated goat anti-rabbit secondary antibody

Anti-BCL10 Immune Signaling Adaptor Rabbit Monoclonal Antibody

PAGE 4

(Cat#201, 1:20,000) respectively. Image was developed using NaQ™ ECL Substrate Kit (Cat#716).

SUPPORT

SUPPORT@GENUINBIOTECH.COM
TEL: +1-540-855-7041

ORDERS

SALES@GENUINBIOTECH.COM
FAX: +1-540-855-7041

WWW.GENUINBIOTECH.COM