

Catalog #: 4757

Aliases

CFL1; Cofilin 1; CFL; Cofilin 1 (Non-Muscle); 18 KDa Phosphoprotein; Cofilin-1; P18; Epididymis Secretory Protein Li 15; Cofilin, Non-Muscle Isoform; HEL-S-15; Cofilin

Background

Gene Name: CFL1

NCBI Gene Entry: [1072](#)

UniProt Entry: [P23528](#)

Application Information

Molecular Weight: Predicted, 19 kDa; observed, 19 kDa

Clonality: Rabbit monoclonal antibody

Clone ID: 24GB12790

Species Reactivity: Human, mouse, rat

Applications Tested: Western blotting (WB), flow cytometry (FCM)

Immunogen

A synthesized peptide derived from human Cofilin

Isotype

Rabbit IgG

Storage Buffer

Supplied in PBS (pH 7.4) containing 50% glycerol, and 0.02% sodium azide.

Storage

Store at -20 °C for one year.

Recommended Dilutions

Western Blotting (WB): 1:1,000-1:5,000

Flow Cytometry (FCM): 1:2,000

Note: This product is for research use only.

Validation Data

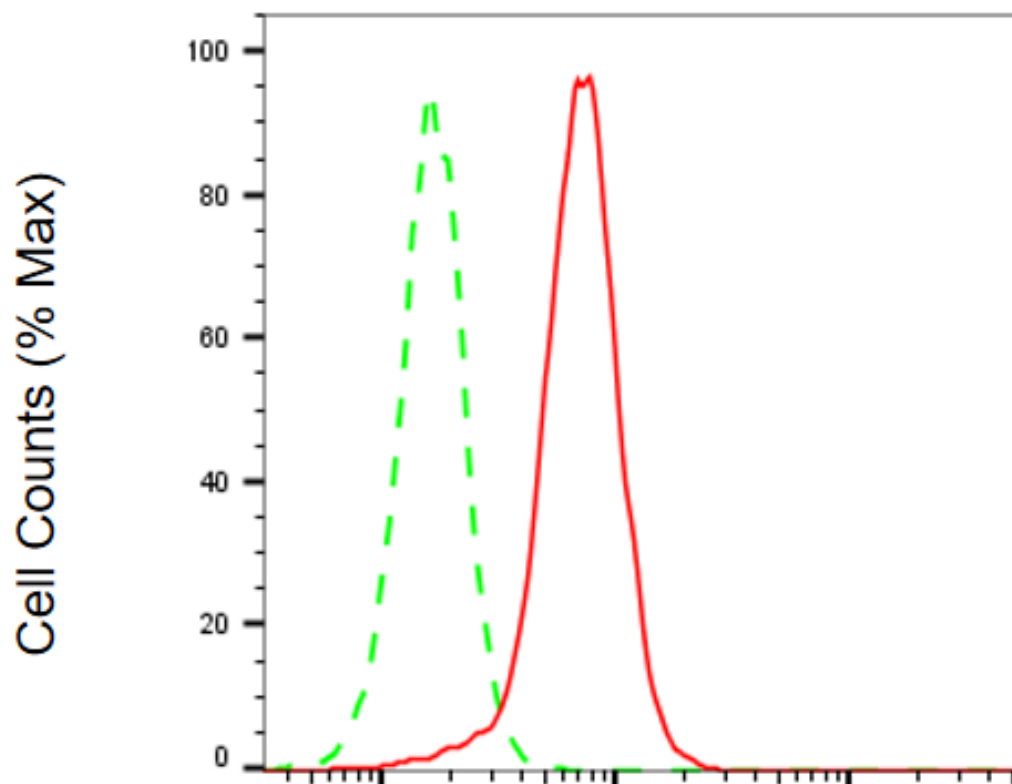
SUPPORT

SUPPORT@GENUINBIOTECH.COM
TEL: +1-540-855-7041

ORDERS

SALES@GENUINBIOTECH.COM
FAX: +1-540-855-7041

WWW.GENUINBIOTECH.COM



Copyright ©2025 Genuin Biotechnologies LLC

Cofilin 1-Alexa Fluor® 647

Flow cytometric analysis of Cofilin 1 expression in H9c2 cells using anti-Cofilin 1 antibody (Cat#4757, 1:2,000). Green, isotype control; red, Cofilin 1.

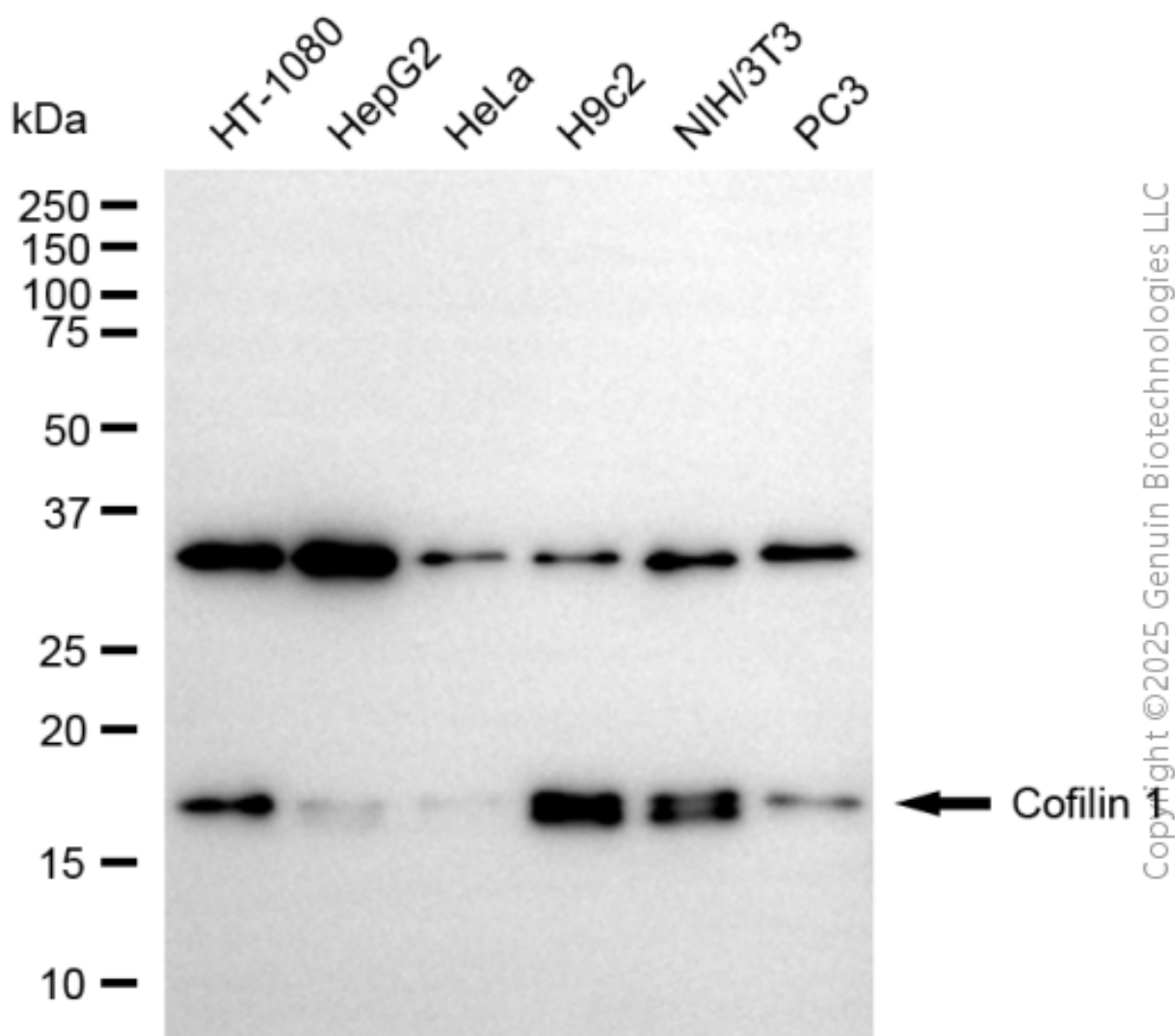
SUPPORT

SUPPORT@GENUINBIOTECH.COM
TEL: +1-540-855-7041

ORDERS

SALES@GENUINBIOTECH.COM
FAX: +1-540-855-7041

WWW.GENUINBIOTECH.COM



Western blotting analysis using anti-cofilin 1 antibody (Cat#4757). Total cell lysates (30 μ g) from various cell lines were loaded and separated by SDS-PAGE. The blot was incubated with anti-cofilin 1 antibody (Cat#4757, 1:5,000) and HRP-conjugated goat anti-rabbit secondary antibody (Cat#201, 1:20,000) respectively. Image was developed using FeQ™ ECL Substrate Kit (Cat#226).