

## Catalog #: 4770

### Aliases

MLKL; Mixed Lineage Kinase Domain-Like Protein; FLJ34389; HMLKL; Mixed Lineage Kinase Domain-Like

### Background

Gene Name: MLKL

NCBI Gene Entry: [197259](#)

UniProt Entry: [Q8NB16](#)

### Application Information

Molecular Weight: Predicted, 54 kDa; observed, 54 kDa

Clonality: Rabbit monoclonal antibody

Clone ID: 24GB12855

Species Reactivity: Human, mouse

Applications Tested: Western blotting (WB), flow cytometry (FCM)

### Immunogen

A synthesized peptide derived from human MLKL

### Isotype

Rabbit IgG

### Storage Buffer

Supplied in PBS (pH 7.4) containing 50% glycerol, and 0.02% sodium azide.

### Storage

Store at -20 °C for one year.

### Recommended Dilutions

Western Blotting (WB): 1:1,000-1:5,000

Flow Cytometry (FCM): 1:2,000

**Note:** This product is for research use only.

### Validation Data

---

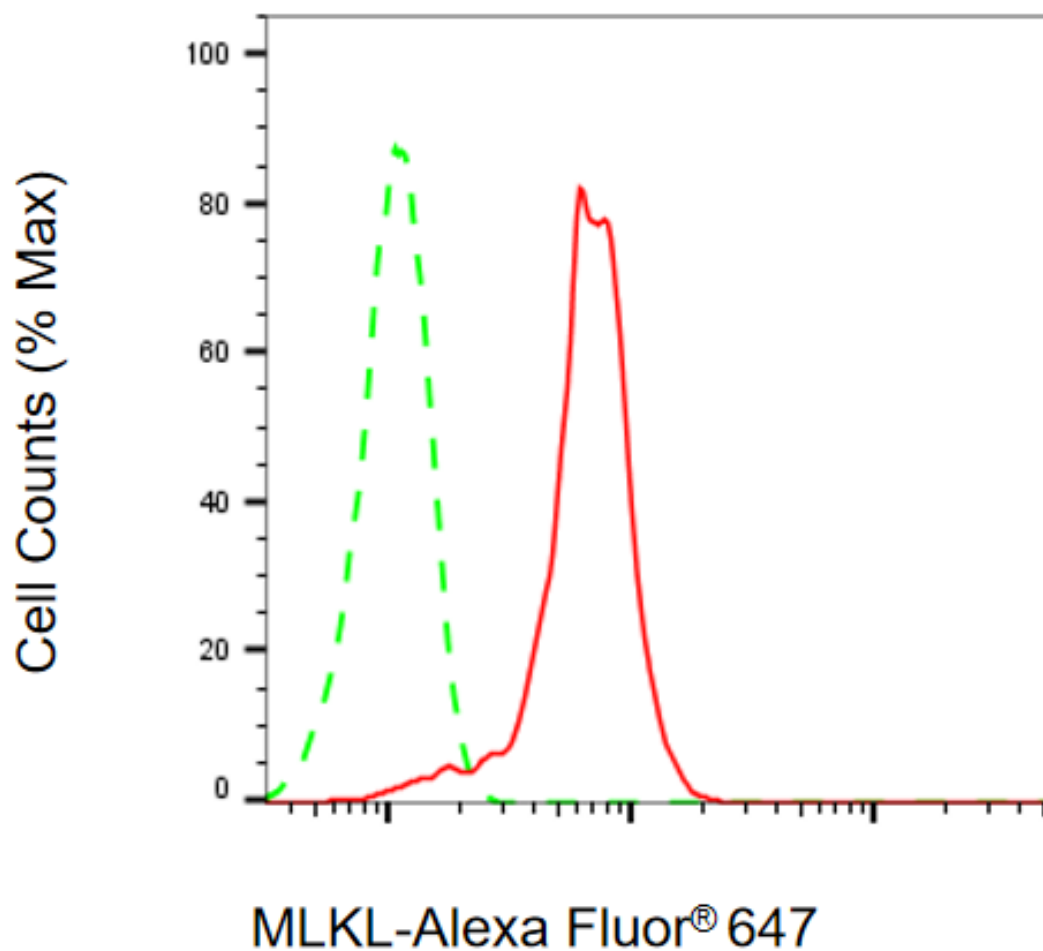
#### SUPPORT

SUPPORT@GENUINBIOTECH.COM  
TEL: +1-540-855-7041

#### ORDERS

SALES@GENUINBIOTECH.COM  
FAX: +1-540-855-7041

[WWW.GENUINBIOTECH.COM](http://WWW.GENUINBIOTECH.COM)



Flow cytometric analysis of MLKL expression in HepG2 cells using anti-MLKL antibody (Cat#4770, 1:2,000). Green, isotype control; red, MLKL.

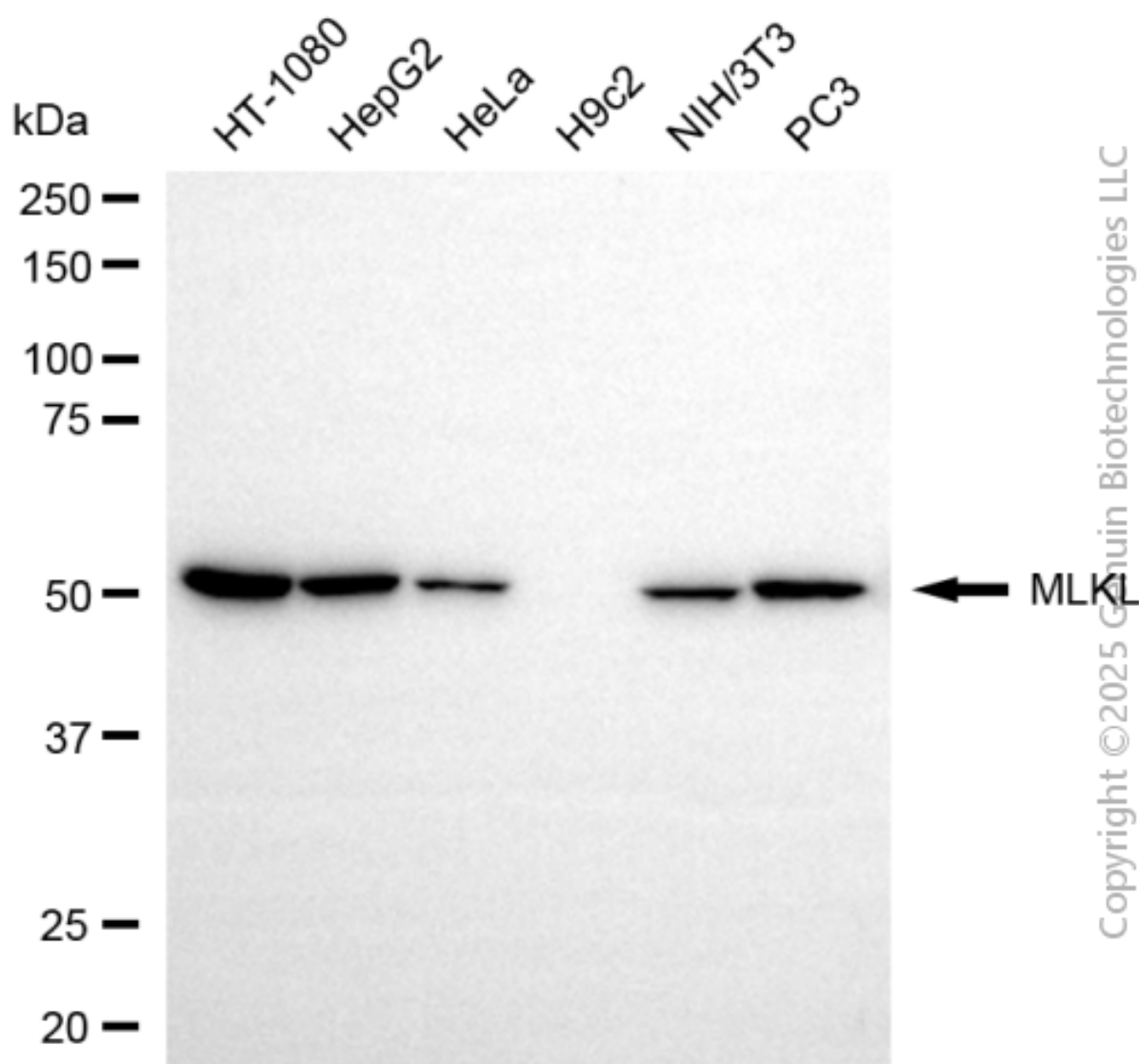
**SUPPORT**

SUPPORT@GENUINBIOTECH.COM  
TEL: +1-540-855-7041

**ORDERS**

SALES@GENUINBIOTECH.COM  
FAX: +1-540-855-7041

[WWW.GENUINBIOTECH.COM](http://WWW.GENUINBIOTECH.COM)



Western blotting analysis using anti-MLKL antibody (Cat#4770). Total cell lysates (30  $\mu$ g) from various cell lines were loaded and separated by SDS-PAGE. The blot was incubated with anti-MLKL antibody (Cat#4770, 1:5,000) and HRP-conjugated goat anti-rabbit secondary antibody (Cat#201, 1:20,000) respectively. Image was developed using NaQ™ ECL Substrate Kit (Cat#716).