

Anti-Leukotriene A4 Hydrolase Mouse Monoclonal Antibody



Catalog #: 4777

Aliases

LTA4H; Leukotriene A4 Hydrolase; Tripeptide Aminopeptidase LTA4H; Leukotriene A-4 Hydrolase; LTA-4 Hydrolase; Testicular Secretory Protein Li 27; Leukotriene A(4) Hydrolase; EC 3.4.11.4; EC 3.3.2.6; LTA4

Background

Gene Name: LTA4H

NCBI Gene Entry: [4048](#)

UniProt Entry: [P09960](#)

Application Information

Molecular Weight: Predicted, 69 kDa; observed, 69 kDa

Clonality: Mouse monoclonal antibody

Clone ID: 24GB12890

Species Reactivity: Human, mouse, rat

Applications Tested: Western blotting (WB), immunocytochemistry (IC), flow cytometry (FCM)

Immunogen

Recombinant protein of human LTA4H

Isotype

Mouse IgG2b

Storage Buffer

Supplied in PBS (pH 7.4) containing 50% glycerol, and 0.02% sodium azide.

Storage

Store at -20 °C for one year.

Recommended Dilutions

Western Blotting (WB): 1:1,000-1:5,000

Immunocytochemistry (IC): 1:100-1:1,000

Flow Cytometry (FCM): 1:2,000

Note: This product is for research use only.

SUPPORT

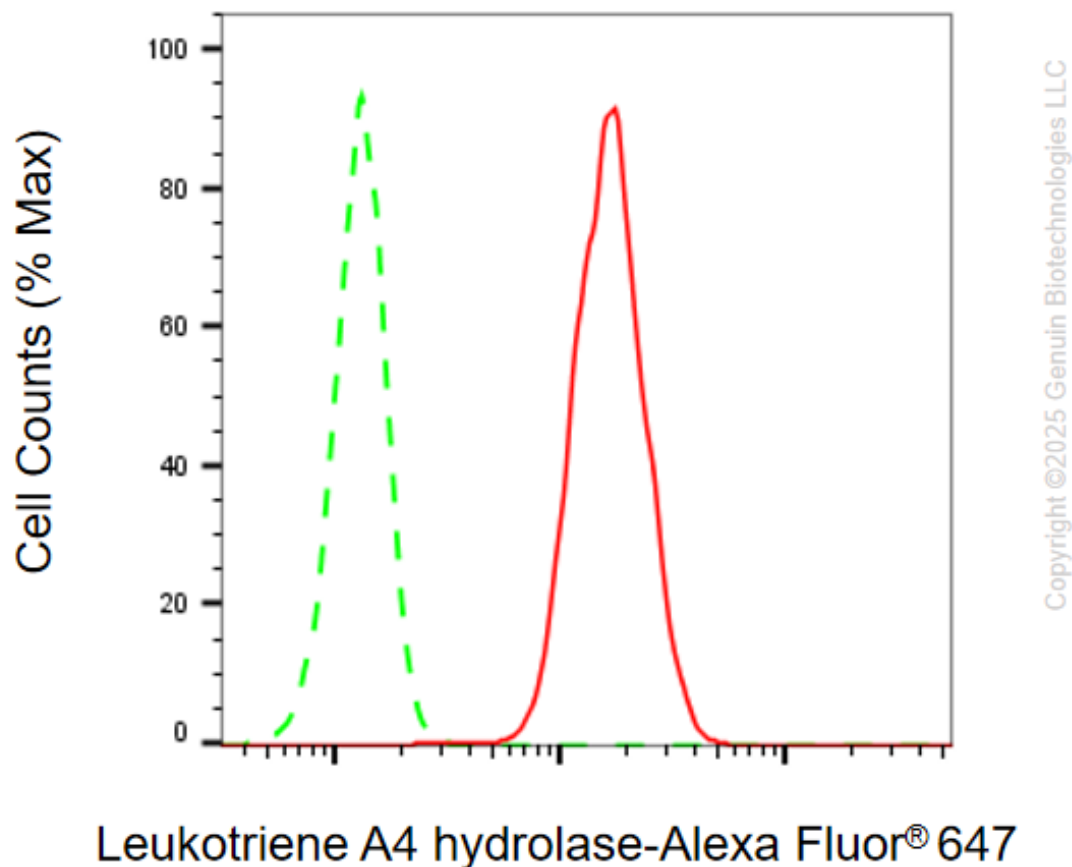
SUPPORT@GENUINBIOTECH.COM
TEL: +1-540-855-7041

ORDERS

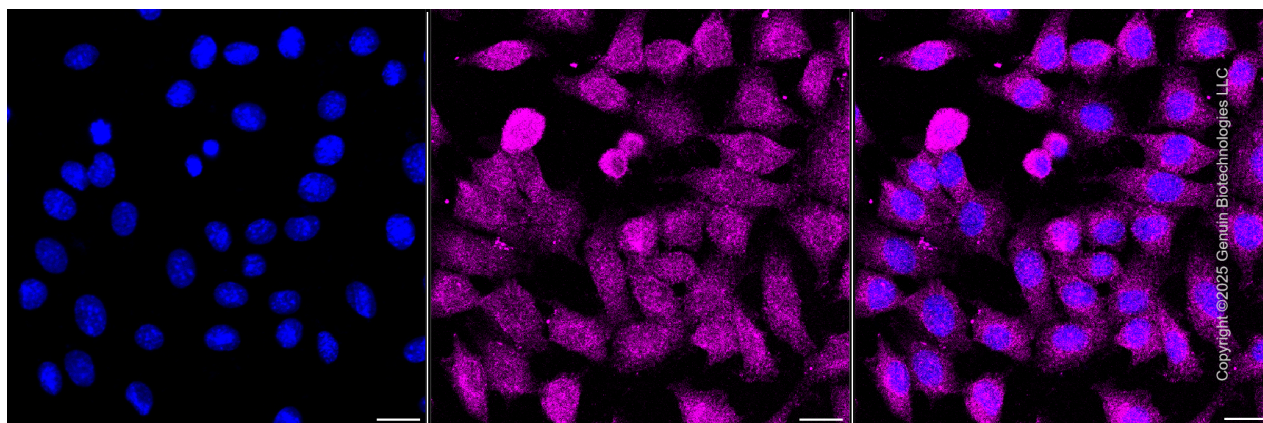
SALES@GENUINBIOTECH.COM
FAX: +1-540-855-7041

WWW.GENUINBIOTECH.COM

Validation Data



Flow cytometric analysis of Leukotriene A4 hydrolase expression in C2C12 cells using anti-Leukotriene A4 hydrolase antibody (Cat#4777, 1:2,000). Green, isotype control; red, Leukotriene A4 hydrolase.



Immunocytochemical staining of C2C12 cells with anti-Leukotriene A4 hydrolase antibody

SUPPORT

SUPPORT@GENUINBIOTECH.COM
TEL: +1-540-855-7041

ORDERS

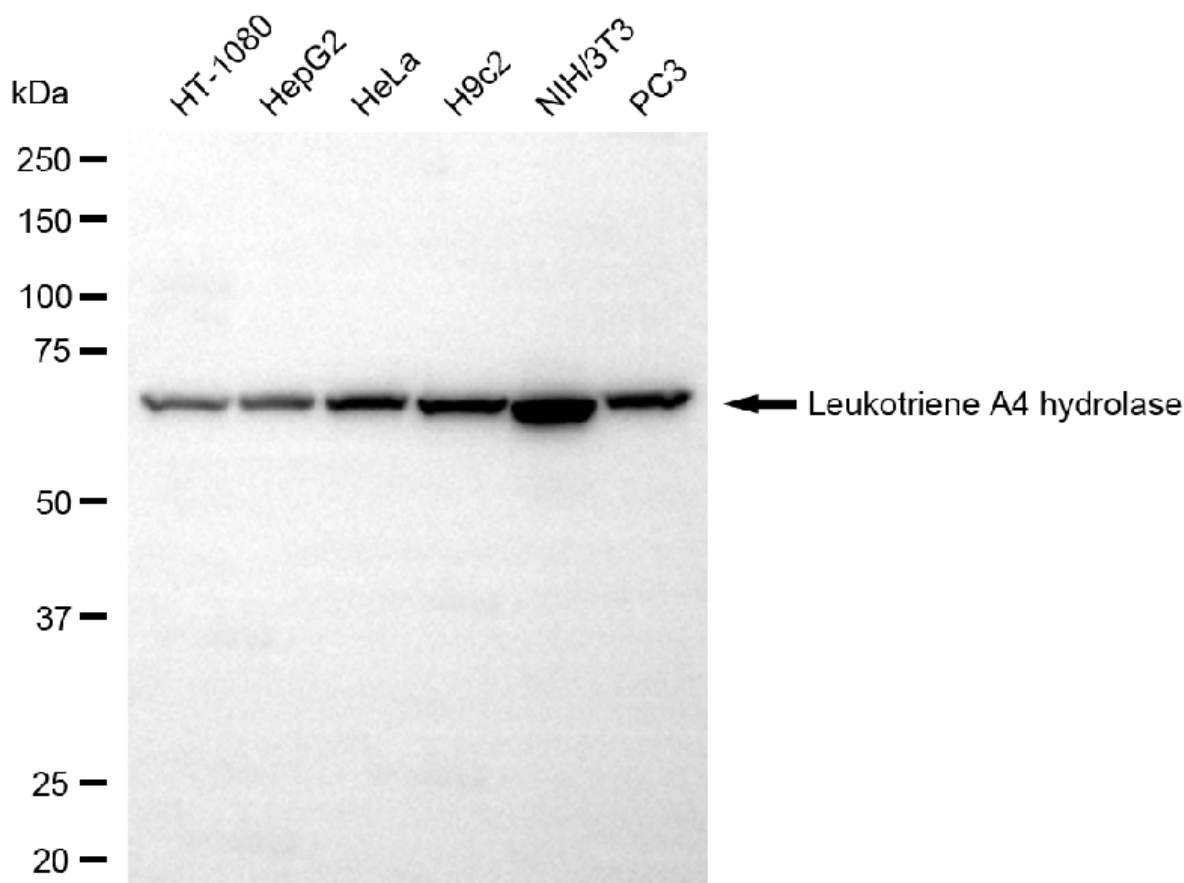
SALES@GENUINBIOTECH.COM
FAX: +1-540-855-7041

WWW.GENUINBIOTECH.COM

Anti-Leukotriene A4 Hydrolase Mouse Monoclonal Antibody

PAGE 3

(Cat#4777, 1:1,000) . Nuclei were stained blue with DAPI;Leukotriene A4 hydrolase was stained magenta with Alexa Fluor® 647. Images were taken using Leica stellaris 5. Protein abundance based on laser Intensity and smart gain: Medium. Scale bar, 20 μ m.



Western blotting analysis using anti-leukotriene A4 hydrolase antibody (Cat#4777). Total cell lysates (30 μ g) from various cell lines were loaded and separated by SDS-PAGE. The blot was incubated with anti-leukotriene A4 hydrolase antibody (Cat#4777, 1:5,000) and HRP-conjugated goat anti-rabbit secondary antibody (Cat#201, 1:20,000) respectively. Image was developed using NaQ™ ECL Substrate Kit (Cat#716).

SUPPORT

SUPPORT@GENUINBIOTECH.COM
TEL: +1-540-855-7041

ORDERS

SALES@GENUINBIOTECH.COM
FAX: +1-540-855-7041

WWW.GENUINBIOTECH.COM