

## Catalog #: 4779

### Aliases

GPHN; Gephyrin; KIAA1385; GPH; GEPH; GPHRYN; MOCODC; HKPX1

### Background

Gene Name: GPHN

NCBI Gene Entry: [10243](#)

UniProt Entry: [Q9NQX3](#)

### Application Information

Molecular Weight: Predicted, 80 kDa; observed, 80 kDa

Clonality: Mouse monoclonal antibody

Clone ID: 24GB12900

Species Reactivity: Human, mouse, rat

Applications Tested: Western blotting (WB), flow cytometry (FCM)

### Immunogen

Recombinant protein of human GPHN

### Isotype

Mouse IgG2a

### Storage Buffer

Supplied in PBS (pH 7.4) containing 50% glycerol, and 0.02% sodium azide.

### Storage

Store at -20 °C for one year.

### Recommended Dilutions

Western Blotting (WB): 1:500-1:2,500

Flow Cytometry (FCM): 1:2,000

**Note:** This product is for research use only.

### Validation Data

---

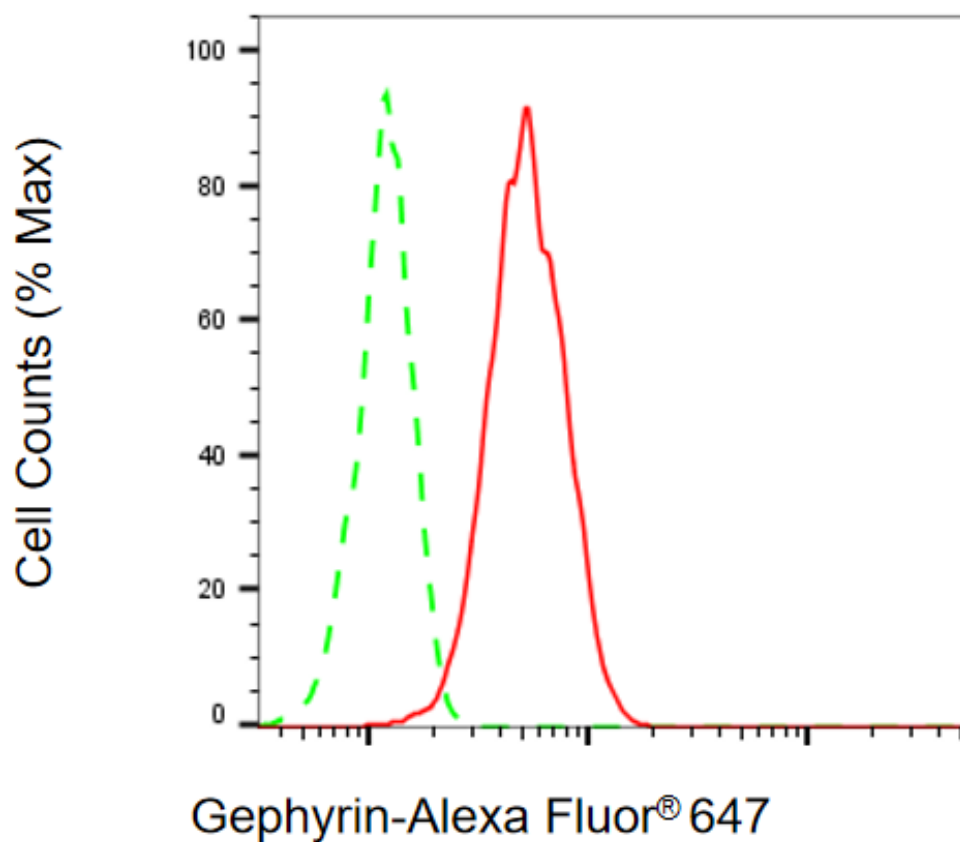
#### SUPPORT

SUPPORT@GENUINBIOTECH.COM  
TEL: +1-540-855-7041

#### ORDERS

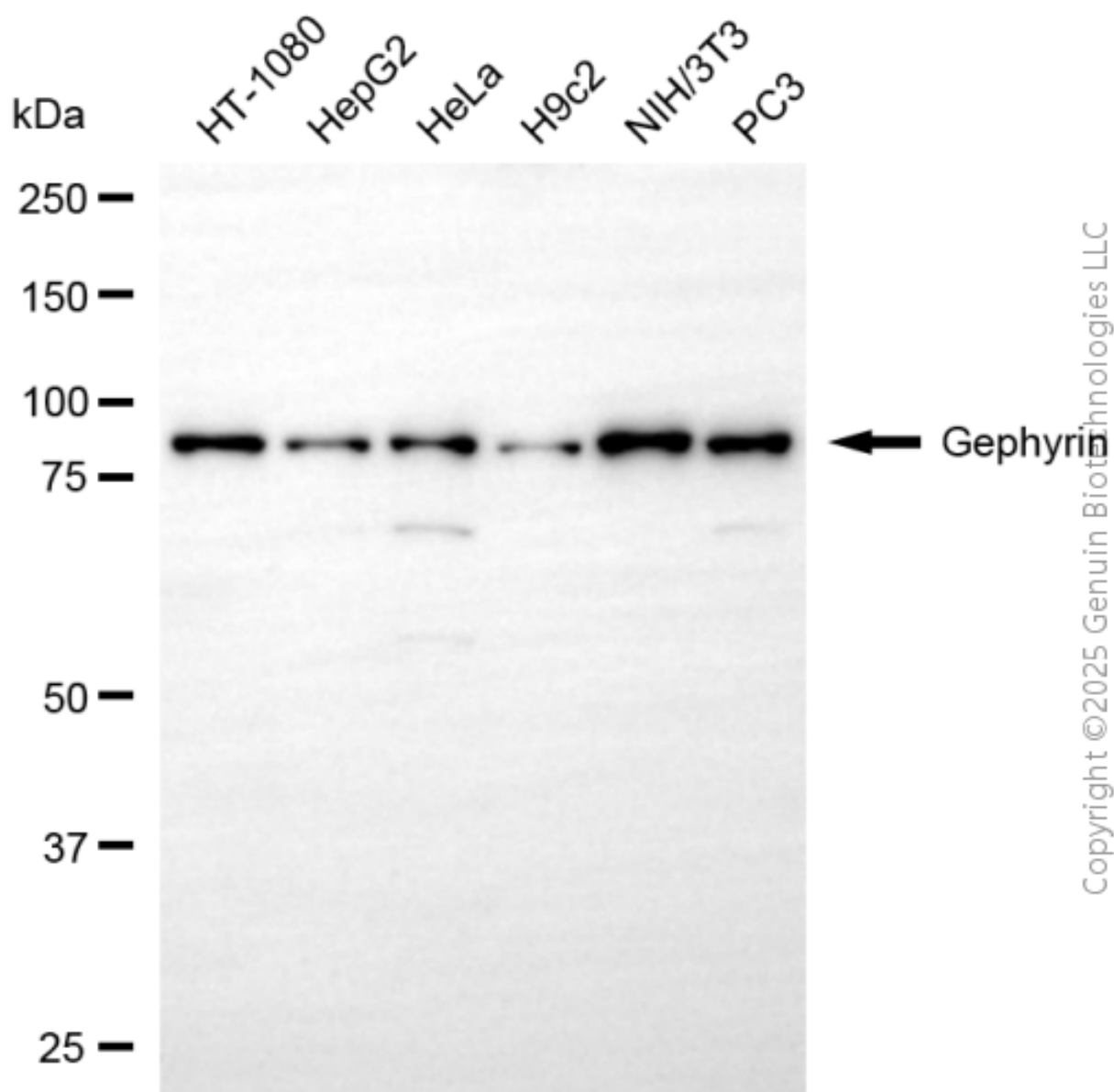
SALES@GENUINBIOTECH.COM  
FAX: +1-540-855-7041

[WWW.GENUINBIOTECH.COM](http://WWW.GENUINBIOTECH.COM)



Copyright ©2025 Genuin Biotechnologies LLC

Flow cytometric analysis of Gephyrin expression in HAP-1 cells using anti-Gephyrin antibody (Cat#4779, 1:2,000). Green, isotype control; red, Gephyrin.



Western blotting analysis using anti-gephyrin antibody (Cat#4779). Total cell lysates (30  $\mu$ g) from various cell lines were loaded and separated by SDS-PAGE. The blot was incubated with anti-gephyrin antibody (Cat#4779, 1:2,500) and HRP-conjugated goat anti-rabbit secondary antibody (Cat#201, 1:20,000) respectively. Image was developed using NaQ™ ECL Substrate Kit (Cat#716).

**SUPPORT**

SUPPORT@GENUINBIOTECH.COM  
TEL: +1-540-855-7041

**ORDERS**

SALES@GENUINBIOTECH.COM  
FAX: +1-540-855-7041

[WWW.GENUINBIOTECH.COM](http://WWW.GENUINBIOTECH.COM)