

# Anti-Cystathionine Gamma-Lyase Mouse Monoclonal Antibody



**Catalog #: 4780**

## Aliases

CTH; Cystathionine Gamma-Lyase; CSE; Cystathionase (Cystathionine Gamma-Lyase); Cysteine-Protein Sulphydrase; Homocysteine Desulphydrase; Cysteine Desulphydrase; Gamma-Cystathionase; EC 4.4.1.1; CGL; Homoserine Dehydratase; Homoserine Deaminase; EC 4.4.1.2; EC 4.4.1

## Background

Gene Name: CTH

NCBI Gene Entry: [1491](#)

UniProt Entry: [P32929](#)

## Application Information

Molecular Weight: Predicted, 45 kDa; observed, 45 kDa

Clonality: Mouse monoclonal antibody

Clone ID: 24GB12905

Species Reactivity: Human, mouse

Applications Tested: Western blotting (WB), flow cytometry (FCM)

## Immunogen

Recombinant protein of human CTH

## Isotype

Mouse IgG2b

## Storage Buffer

Supplied in PBS (pH 7.4) containing 50% glycerol, and 0.02% sodium azide.

## Storage

Store at -20 °C for one year.

## Recommended Dilutions

Western Blotting (WB): 1:500-1:2,500

Flow Cytometry (FCM): 1:2,000

**Note:** This product is for research use only.

---

### SUPPORT

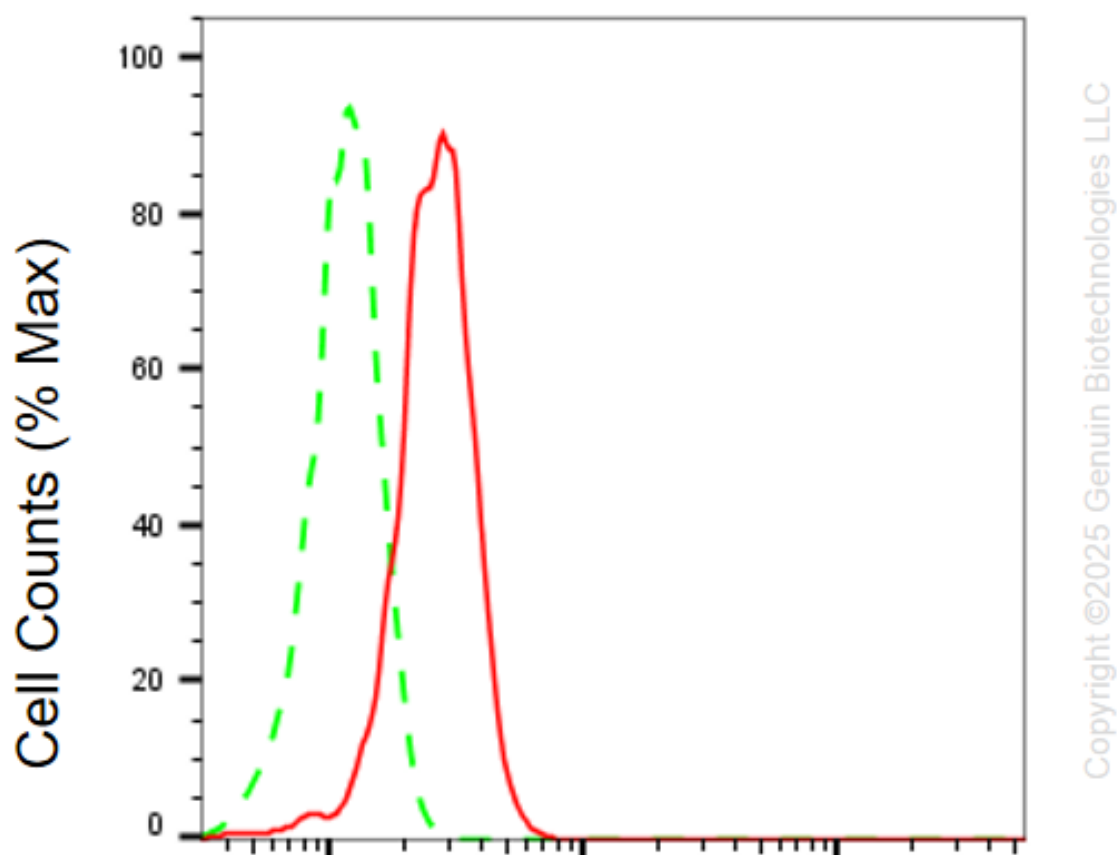
SUPPORT@GENUINBIOTECH.COM  
TEL: +1-540-855-7041

### ORDERS

SALES@GENUINBIOTECH.COM  
FAX: +1-540-855-7041

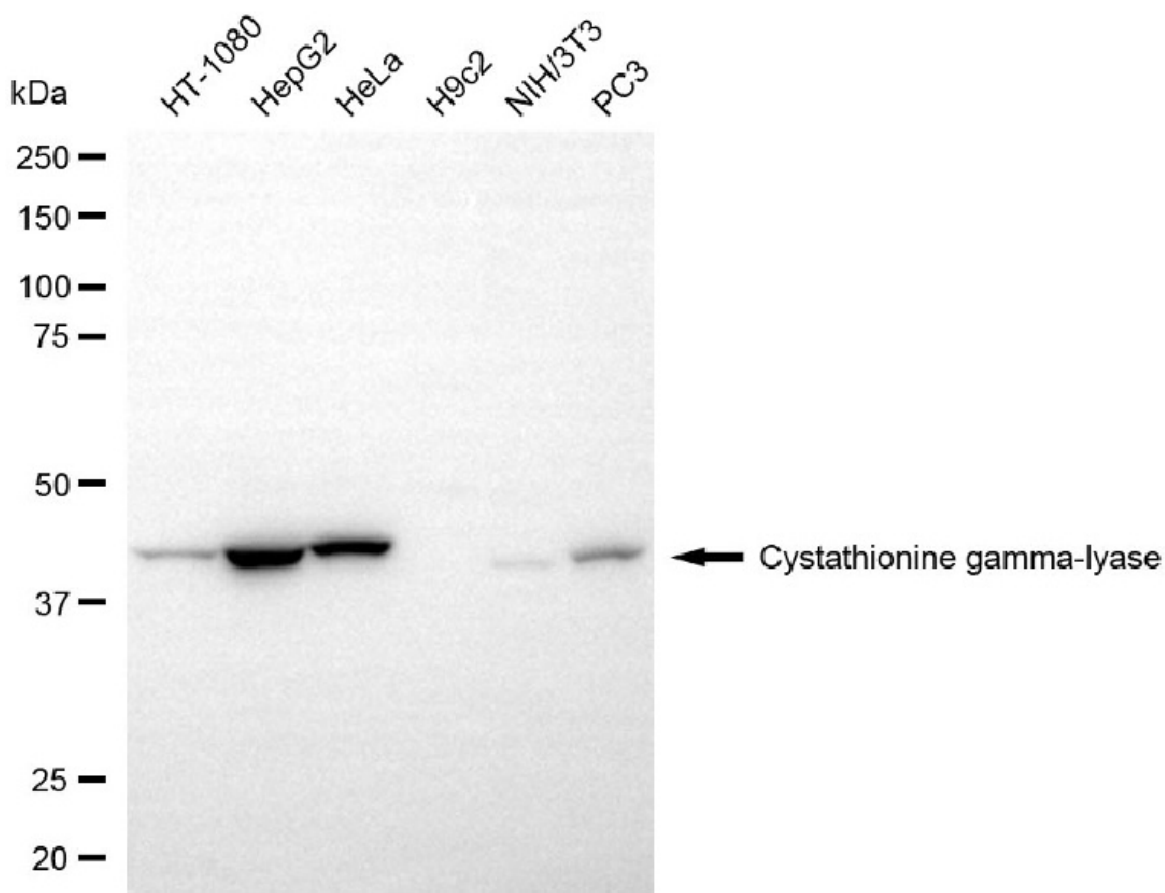
[WWW.GENUINBIOTECH.COM](http://WWW.GENUINBIOTECH.COM)

**Validation Data**



**Cystathionine gamma-lyase-Alexa Fluor® 647**

Flow cytometric analysis of cystathionine gamma-lyase expression in HepG2 cells using anti-cystathionine gamma-lyase antibody (Cat#4780, 1:2,000). Green, isotype control; red, cystathionine gamma-lyase.



Copyright ©2025 Genuin Biotechnologies LLC

Western blotting analysis using anti-cystathionine gamma-lyase antibody (Cat#4780). Total cell lysates (30  $\mu$ g) from various cell lines were loaded and separated by SDS-PAGE. The blot was incubated with anti-cystathionine gamma-lyase antibody (Cat#4780, 1:2,500) and HRP-conjugated goat anti-mouse secondary antibody (Cat#101, 1:20,000) respectively. Image was developed using NaQ™ ECL Substrate Kit (Cat#716).