

Anti-Cystathionine Gamma-Lyase Mouse Monoclonal Antibody



Catalog #: 4781

Aliases

CTH; Cystathionine Gamma-Lyase; CSE; Cystathionase (Cystathionine Gamma-Lyase); Cysteine-Protein Sulfhydrase; Homocysteine Desulfhydrase; Cysteine Desulfhydrase; Gamma-Cystathionase; EC 4.4.1.1; CGL; Homoserine Dehydratase; Homoserine Deaminase; EC 4.4.1.2; EC 4.4.1

Background

Gene Name: CTH

NCBI Gene Entry: [1491](#)

UniProt Entry: [P32929](#)

Application Information

Molecular Weight: Predicted, 45 kDa; observed, 45 kDa

Clonality: Mouse monoclonal antibody

Clone ID: 24GB12910

Species Reactivity: Human, rat

Applications Tested: Western blotting (WB), flow cytometry (FCM)

Immunogen

Recombinant protein of human CTH

Isotype

Mouse IgG1

Storage Buffer

Supplied in PBS (pH 7.4) containing 50% glycerol, and 0.02% sodium azide.

Storage

Store at -20 °C for one year.

Recommended Dilutions

Western Blotting (WB): 1:200-1:1,000

Flow Cytometry (FCM): 1:2,000

Note: This product is for research use only.

SUPPORT

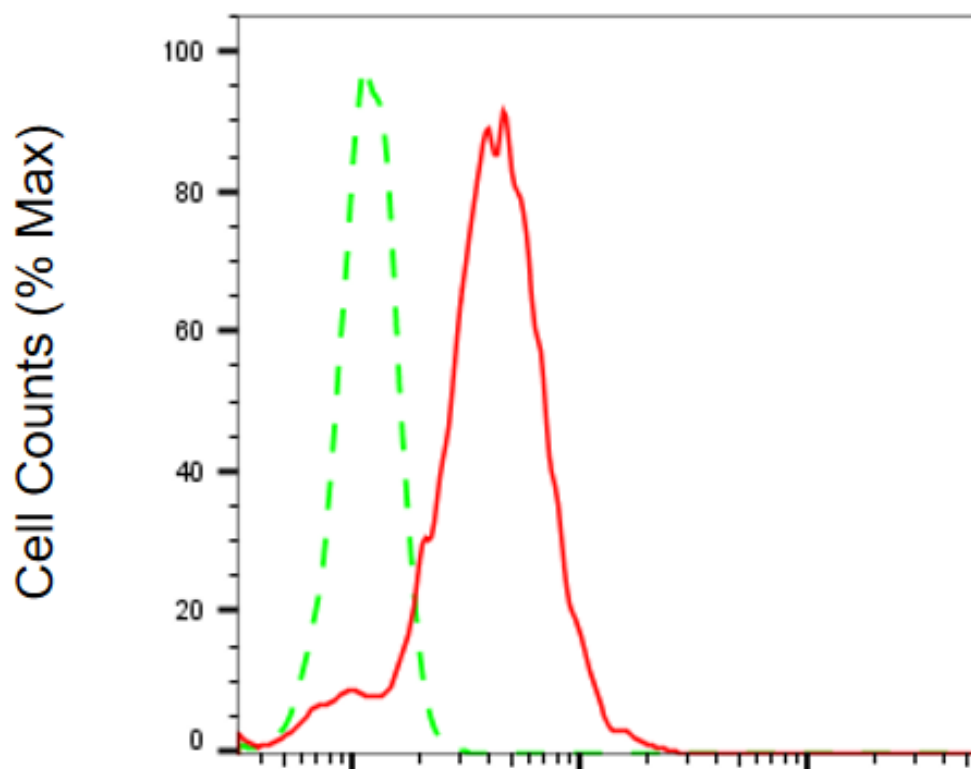
SUPPORT@GENUINBIOTECH.COM
TEL: +1-540-855-7041

ORDERS

SALES@GENUINBIOTECH.COM
FAX: +1-540-855-7041

WWW.GENUINBIOTECH.COM

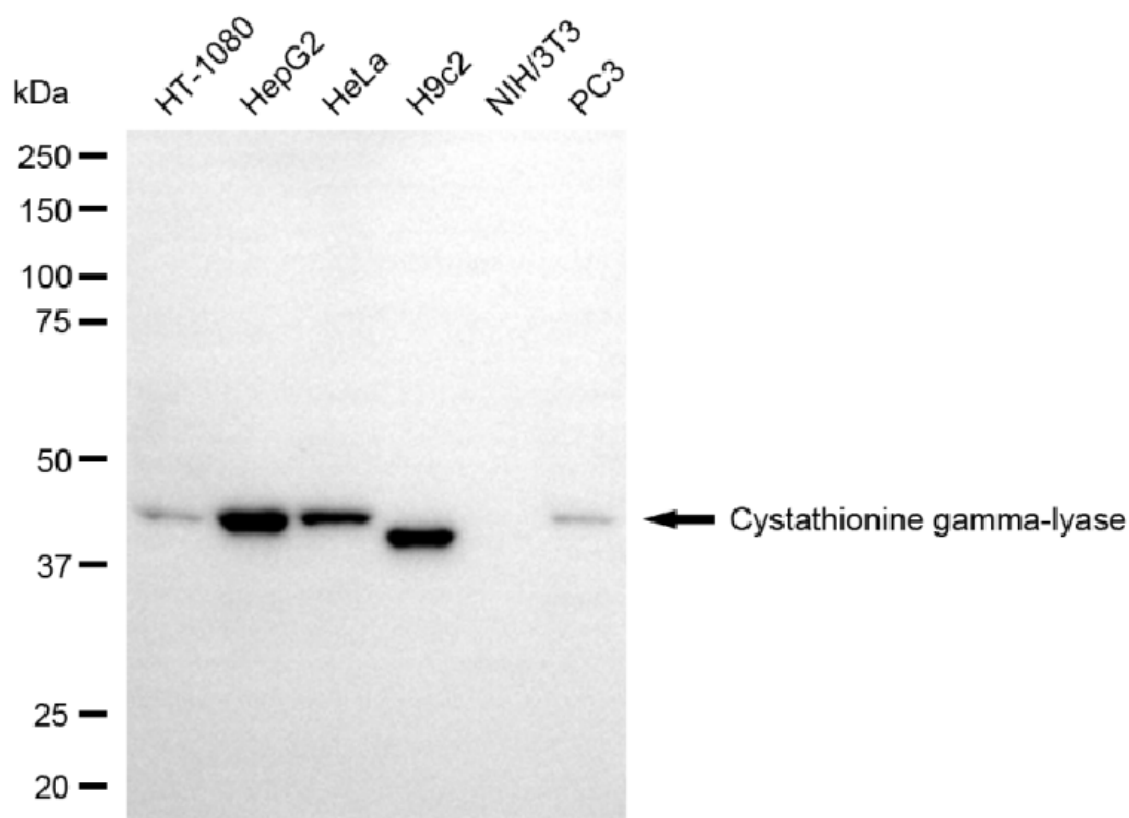
Validation Data



Copyright ©2025 Genuin Biotechnologies LLC

Cystathionine gamma-lyase-Alexa Fluor® 647

Flow cytometric analysis of Cystathionine gamma-lyase expression in HepG2 cells using anti-Cystathionine gamma-lyase antibody (Cat#4781, 1:2,000). Green, isotype control; red, Cystathionine gamma-lyase.



Western blotting analysis using anti-cystathionine gamma-lyase antibody (Cat#4781). Total cell lysates (30 μ g) from various cell lines were loaded and separated by SDS-PAGE. The blot was incubated with anti-cystathionine gamma-lyase antibody (Cat#4781, 1:1,000) and HRP-conjugated goat anti-mouse secondary antibody (Cat#101, 1:20,000) respectively. Image was developed using NaQ™ ECL Substrate Kit (Cat#716).