

Anti-Cell Division Cycle 123 Mouse Monoclonal Antibody



Catalog #: 4789

Aliases

CDC123; Cell Division Cycle 123; D123; C10orf7; Translation Initiation Factor EIF2 Assembly Protein; Cell Division Cycle Protein 123 Homolog; HT-1080; PZ32; Cell Division Cycle 123 Homolog (S. Cerevisiae); Chromosome 10 Open Reading Frame 7; Cell Division Cycle 123 Homolog; Protein D123

Background

Gene Name: CDC123

NCBI Gene Entry: [8872](#)

UniProt Entry: [O75794](#)

Application Information

Molecular Weight: Predicted, 39 kDa; observed, 45 kDa

Clonality: Mouse monoclonal antibody

Clone ID: 24GB12950

Species Reactivity: Human

Applications Tested: Western blotting (WB), immunocytochemistry (IC), flow cytometry (FCM)

Immunogen

Recombinant protein of human CDC123

Isotype

Mouse IgG2b

Storage Buffer

Supplied in PBS (pH 7.4) containing 50% glycerol, and 0.02% sodium azide.

Storage

Store at -20 °C for one year.

Recommended Dilutions

Western Blotting (WB): 1:1,000-1:5,000

Immunocytochemistry (IC): 1:100-1:1,000

Flow Cytometry (FCM): 1:2,000

SUPPORT

SUPPORT@GENUINBIOTECH.COM
TEL: +1-540-855-7041

ORDERS

SALES@GENUINBIOTECH.COM
FAX: +1-540-855-7041

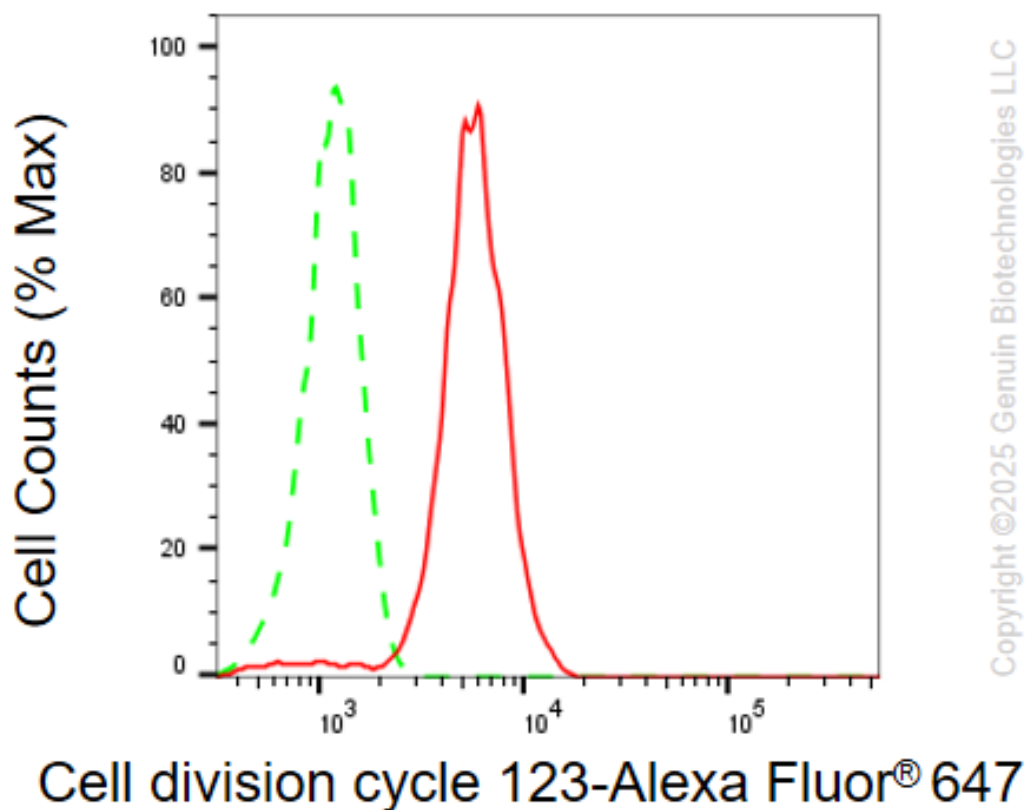
WWW.GENUINBIOTECH.COM

Anti-Cell Division Cycle 123 Mouse Monoclonal Antibody

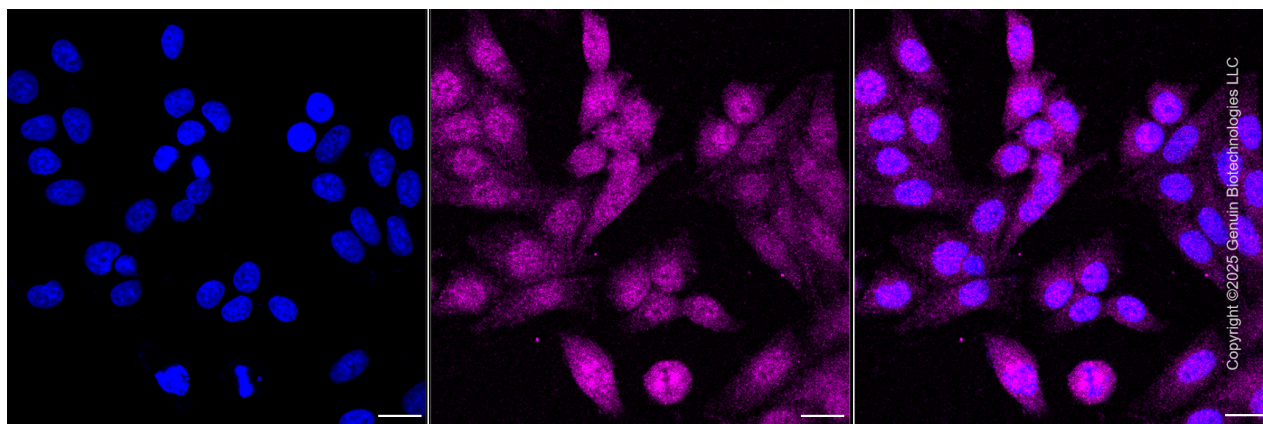
PAGE 2

Note: This product is for research use only.

Validation Data



Flow cytometric analysis of Cell division cycle 123 expression in HepG2 cells using anti-Cell division cycle 123 antibody (Cat#4789, 1:2,000). Green, isotype control; red, Cell division cycle 123.



Immunocytochemical staining of HepG2 cells with anti-Cell division cycle 123 antibody (Cat#4789, 1:1,000). Nuclei were stained blue with DAPI; Cell division cycle 123 was stained

SUPPORT

SUPPORT@GENUINBIOTECH.COM
TEL: +1-540-855-7041

ORDERS

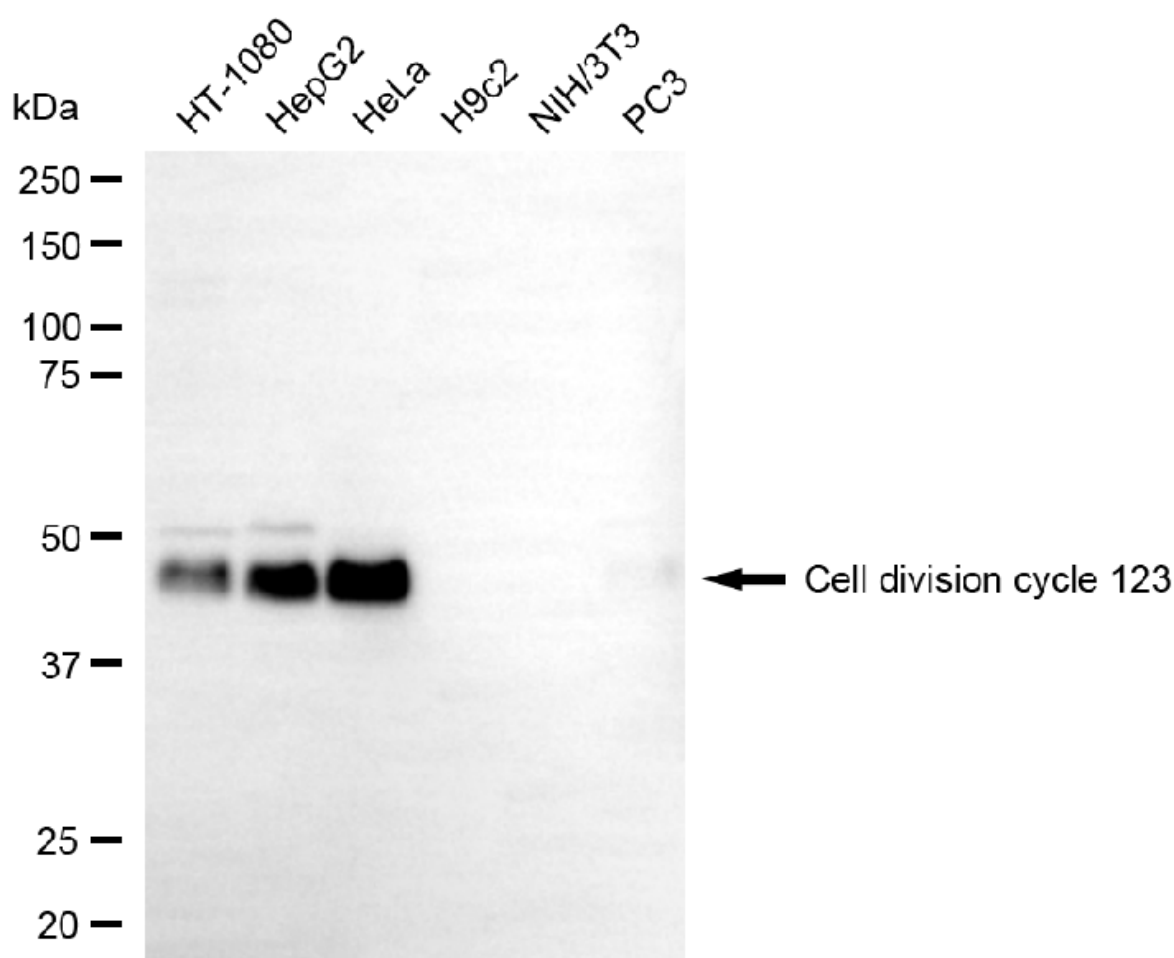
SALES@GENUINBIOTECH.COM
FAX: +1-540-855-7041

WWW.GENUINBIOTECH.COM

Anti-Cell Division Cycle 123 Mouse Monoclonal Antibody

PAGE 3

magenta with Alexa Fluor® 647. Images were taken using Leica stellaris 5. Protein abundance based on laser Intensity and Smart Gain: Low. Scale bar, 20 μ m.



Western blotting analysis using anti-cell division cycle 123 antibody (Cat#4789). Total cell lysates (30 μ g) from various cell lines were loaded and separated by SDS-PAGE. The blot was incubated with anti-cell division cycle 123 antibody (Cat#4789, 1:5,000) and HRP-conjugated goat anti-rabbit secondary antibody (Cat#201, 1:20,000) respectively. Image was developed using FeQ™ ECL Substrate Kit (Cat#226).

SUPPORT

SUPPORT@GENUINBIOTECH.COM
TEL: +1-540-855-7041

ORDERS

SALES@GENUINBIOTECH.COM
FAX: +1-540-855-7041

WWW.GENUINBIOTECH.COM