

Catalog #: 4803

Aliases

GBE1; 1,4-Alpha-Glucan Branching Enzyme 1; Glucan (1,4-Alpha-), Branching Enzyme 1; 1,4-Alpha-Glucan-Branching Enzyme; Glycogen Branching Enzyme; Brancher Enzyme; EC 2.4.1.18; Amylo-(1,4 To 1,6) Transglucosidase; Amylo-(1,4 To 1,6) Transglycosylase; Glycogen Storage Disease Type IV; Glycogen-Branching Enzyme; Andersen Disease; APBD; GSD4; GBE

Background

Gene Name: GBE1

NCBI Gene Entry: [2632](#)

UniProt Entry: [Q04446](#)

Application Information

Molecular Weight: Predicted, 80 kDa; observed, 70 kDa

Clonality: Mouse monoclonal antibody

Clone ID: 24GB13020

Species Reactivity: Human, rat

Applications Tested: Western blotting (WB)

Immunogen

Recombinant protein of human GBE1

Isotype

Mouse IgG2a

Storage Buffer

Supplied in PBS (pH 7.4) containing 50% glycerol, and 0.02% sodium azide.

Storage

Store at -20 °C for one year.

Recommended Dilutions

Western Blotting (WB): 1:500-1:2,500

Note: This product is for research use only.

Validation Data

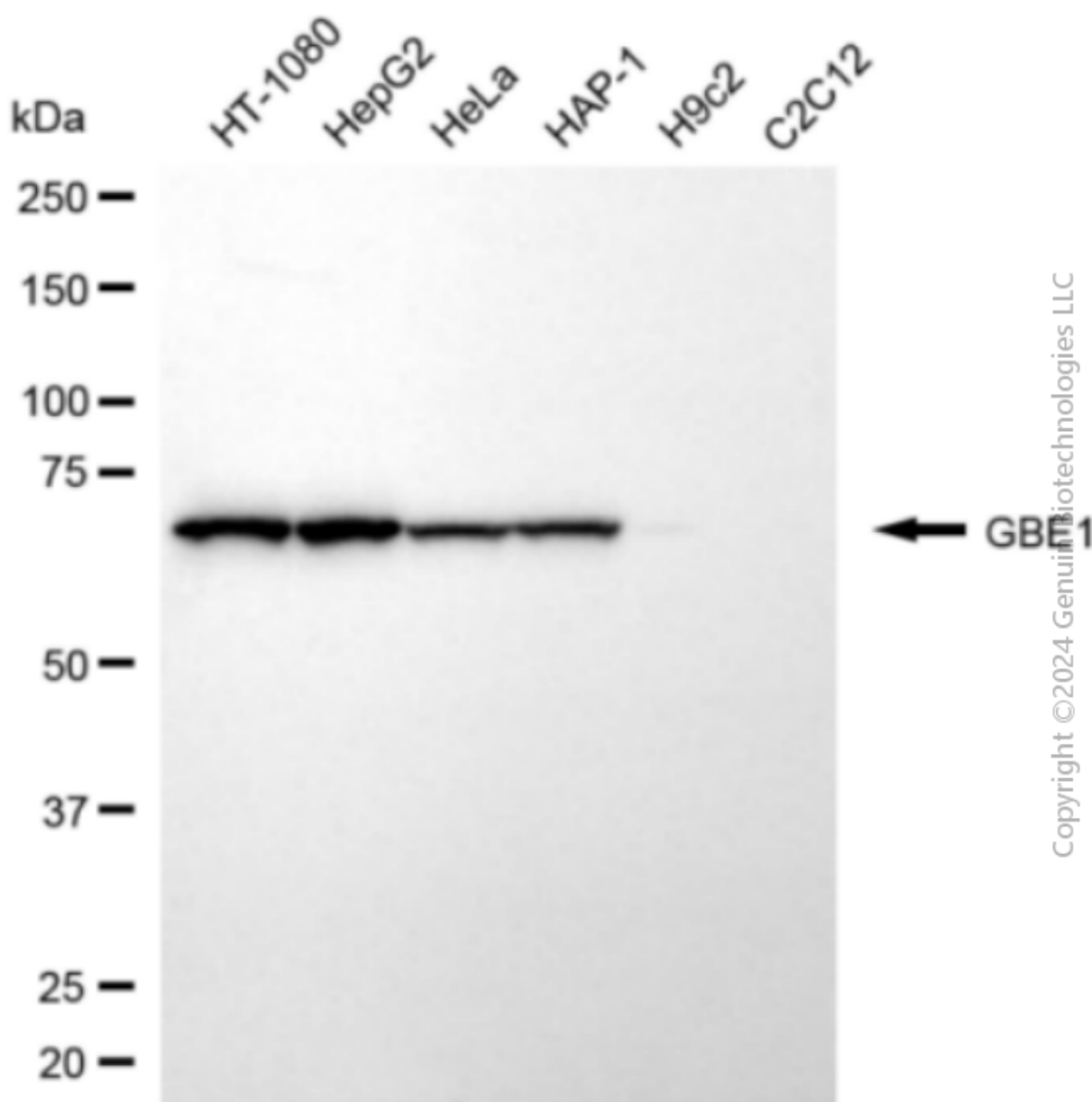
SUPPORT

SUPPORT@GENUINBIOTECH.COM
TEL: +1-540-855-7041

ORDERS

SALES@GENUINBIOTECH.COM
FAX: +1-540-855-7041

WWW.GENUINBIOTECH.COM



Western blotting analysis using anti-GBE1 antibody (Cat#4803). Total cell lysates (30 µg) from various cell lines were loaded and separated by SDS-PAGE. The blot was incubated with anti-GBE1 antibody (Cat#4803, 1:2,500) and HRP-conjugated goat anti-mouse secondary antibody (Cat#101, 1:20,000) respectively. Image was developed using NaQ™ ECL Substrate Kit (Cat#716).

SUPPORT

SUPPORT@GENUINBIOTECH.COM
TEL: +1-540-855-7041

ORDERS

SALES@GENUINBIOTECH.COM
FAX: +1-540-855-7041

WWW.GENUINBIOTECH.COM