

Catalog #: 4813

Aliases

GATM; Glycine Amidinotransferase; AGAT; Glycine Amidinotransferase, Mitochondrial; L-Arginine:Glycine Amidinotransferase; Transamidinase; EC 2.1.4.1; Glycine Amidinotransferase (L-Arginine:Glycine Amidinotransferase); Testicular Secretory Protein Li 19; EC 2.1.4 47; CCDS3; FRTS1; FRTS; RFS; AT

Background

Gene Name: GATM

NCBI Gene Entry: [2628](#)

UniProt Entry: [P50440](#)

Application Information

Molecular Weight: Predicted, 48 kDa; observed, 48 kDa

Clonality: Mouse monoclonal antibody

Clone ID: 24GB13070

Species Reactivity: Human, mouse, rat

Applications Tested: Western blotting (WB), immunocytochemistry (IC)

Immunogen

Recombinant protein of human GATM

Isotype

Mouse IgG2a

Storage Buffer

Supplied in PBS (pH 7.4) containing 50% glycerol, and 0.02% sodium azide.

Storage

Store at -20 °C for one year.

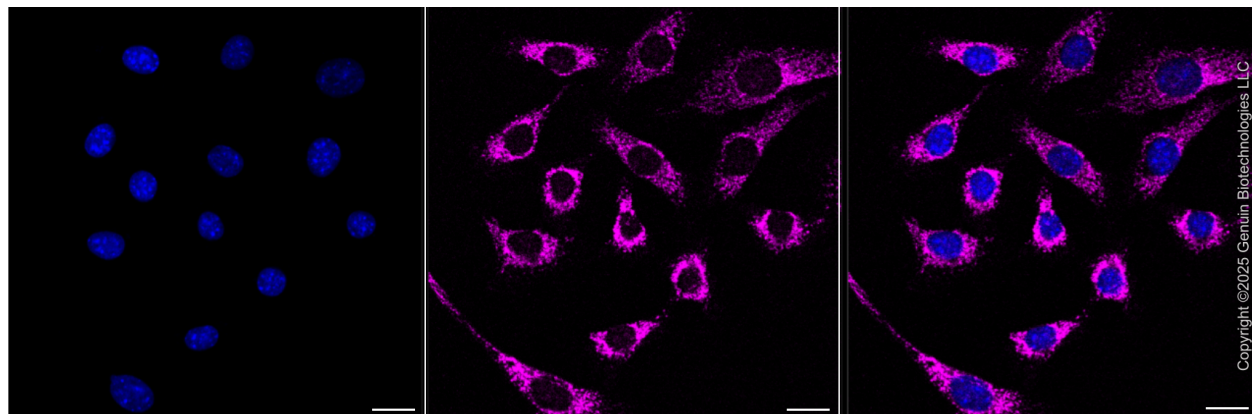
Recommended Dilutions

Western Blotting (WB): 1:500-1:2,500

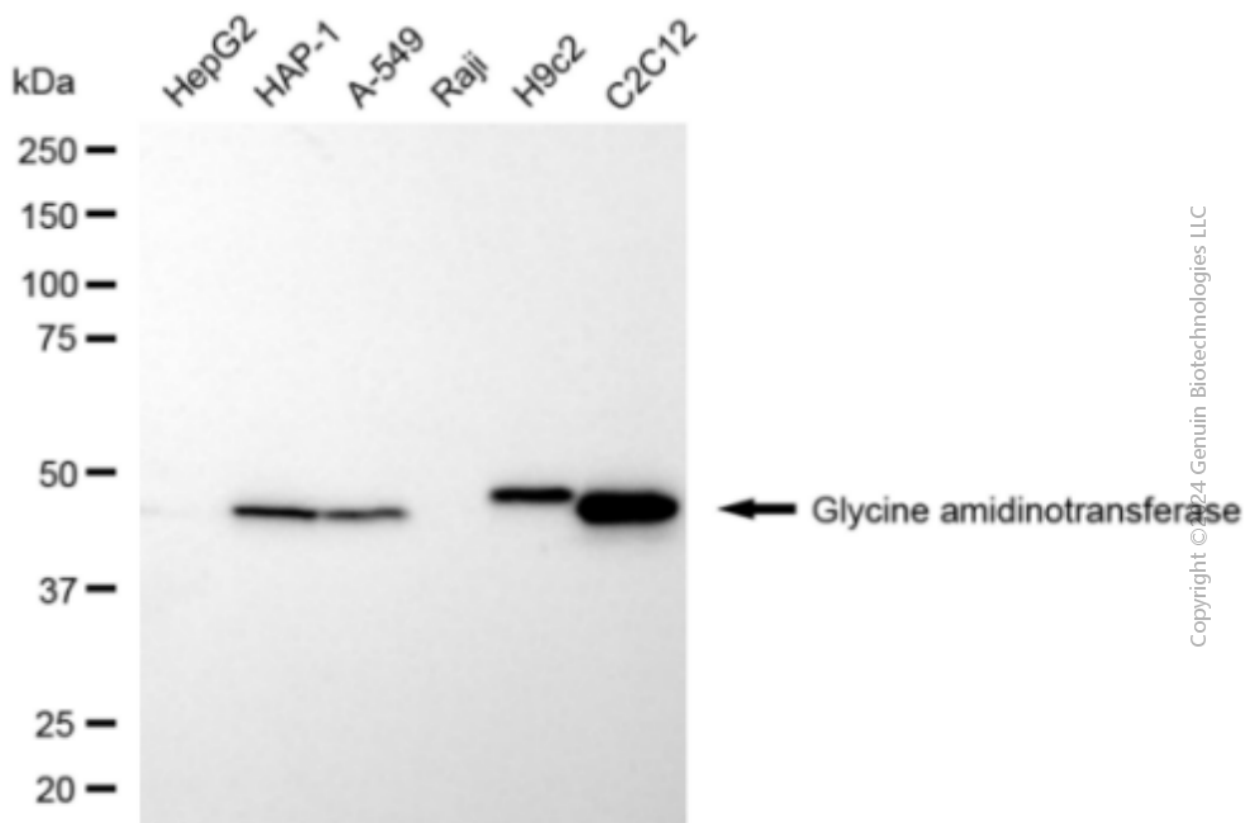
Immunocytochemistry (IC): 1:100-1:1,000

Note: This product is for research use only.

Validation Data



Immunocytochemical staining of C2C12 cells with anti-Glycine amidinotransferase associated protein antibody (Cat#4813, 1:1,000) . Nuclei were stained blue with DAPI; Glycine amidinotransferase associated protein was stained magenta with Alexa Fluor® 647. Images were taken using Leica stellaris 5. Protein abundance based on laser Intensity and smart gain: Low. Scale bar, 20 μ m.



Western blotting analysis using anti-glycine amidinotransferase antibody (Cat#4813). Total cell lysates (30 μ g) from various cell lines were loaded and separated by SDS-PAGE. The blot was

SUPPORT

SUPPORT@GENUINBIOTECH.COM
TEL: +1-540-855-7041

ORDERS

SALES@GENUINBIOTECH.COM
FAX: +1-540-855-7041

WWW.GENUINBIOTECH.COM

incubated with anti-glycine amidinotransferase antibody (Cat#4813, 1:2,500) and HRP-conjugated goat anti-mouse secondary antibody (Cat#101, 1:20,000) respectively. Image was developed using NaQ™ ECL Substrate Kit (Cat#716).