

Catalog #: 4823

Aliases

GNAS; GNAS Complex Locus ; NESP55; GNAS1; NESP; GPSA; SCG6; SgVI; Guanine Nucleotide Binding Protein (G Protein), Alpha Stimulating Activity Polypeptide 1; Adenylate Cyclase-Stimulating G Alpha Protein; Alternative Gene Product Encoded By XL-Exon; Extra Large Alphas Protein; G Protein Subunit Alpha S; Secretogranin VI; Protein ALEX; GNASXL; GSP; Guanine Nucleotide-Binding Protein G(S) Subunit Alpha Isoforms Short; Guanine Nucleotide-Binding Protein G(S) Subunit Alpha Isoforms XLas; Guanine Nucleotide Regulatory Protein; Neuroendocrine Secretory Protein 55; Protein SCG6 (Secretogranin VI); Protein GNAS; C20orf45; XLalphas; PITA3; AHO; GSA; POH

Background

Gene Name: GNAS

NCBI Gene Entry: [2778](#)

UniProt Entry: [P84996](#)

Application Information

Molecular Weight: Predicted, 46 kDa; observed, 46 kDa

Clonality: Mouse monoclonal antibody

Clone ID: 24GB13120

Species Reactivity: Human, mouse, rat

Applications Tested: Western blotting (WB), immunocytochemistry (IC)

Immunogen

Recombinant protein of human GNAS

Isotype

Mouse IgG2b

Storage Buffer

Supplied in PBS (pH 7.4) containing 50% glycerol, and 0.02% sodium azide.

Storage

Store at -20 °C for one year.

Recommended Dilutions

Western Blotting (WB): 1:500-1:2,500

SUPPORT

SUPPORT@GENUINBIOTECH.COM
TEL: +1-540-855-7041

ORDERS

SALES@GENUINBIOTECH.COM
FAX: +1-540-855-7041

WWW.GENUINBIOTECH.COM

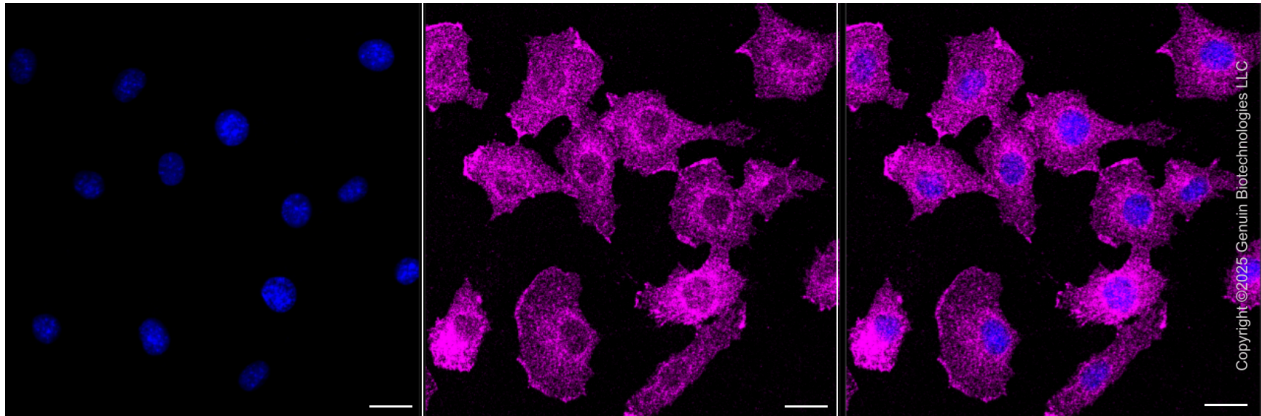
Anti-GNAS Complex Locus Mouse Monoclonal Antibody

PAGE 2

Immunocytochemistry (IC): 1:100-1:1,000

Note: This product is for research use only.

Validation Data



Immunocytochemical staining of C2C12 cells with anti-GNAS associated protein antibody (Cat#4823, 1:1,000). Nuclei were stained blue with DAPI; GNAS associated protein was stained magenta with Alexa Fluor® 647. Images were taken using Leica stellaris 5. Protein abundance based on laser Intensity and smart gain: Low. Scale bar, 20 μ m.

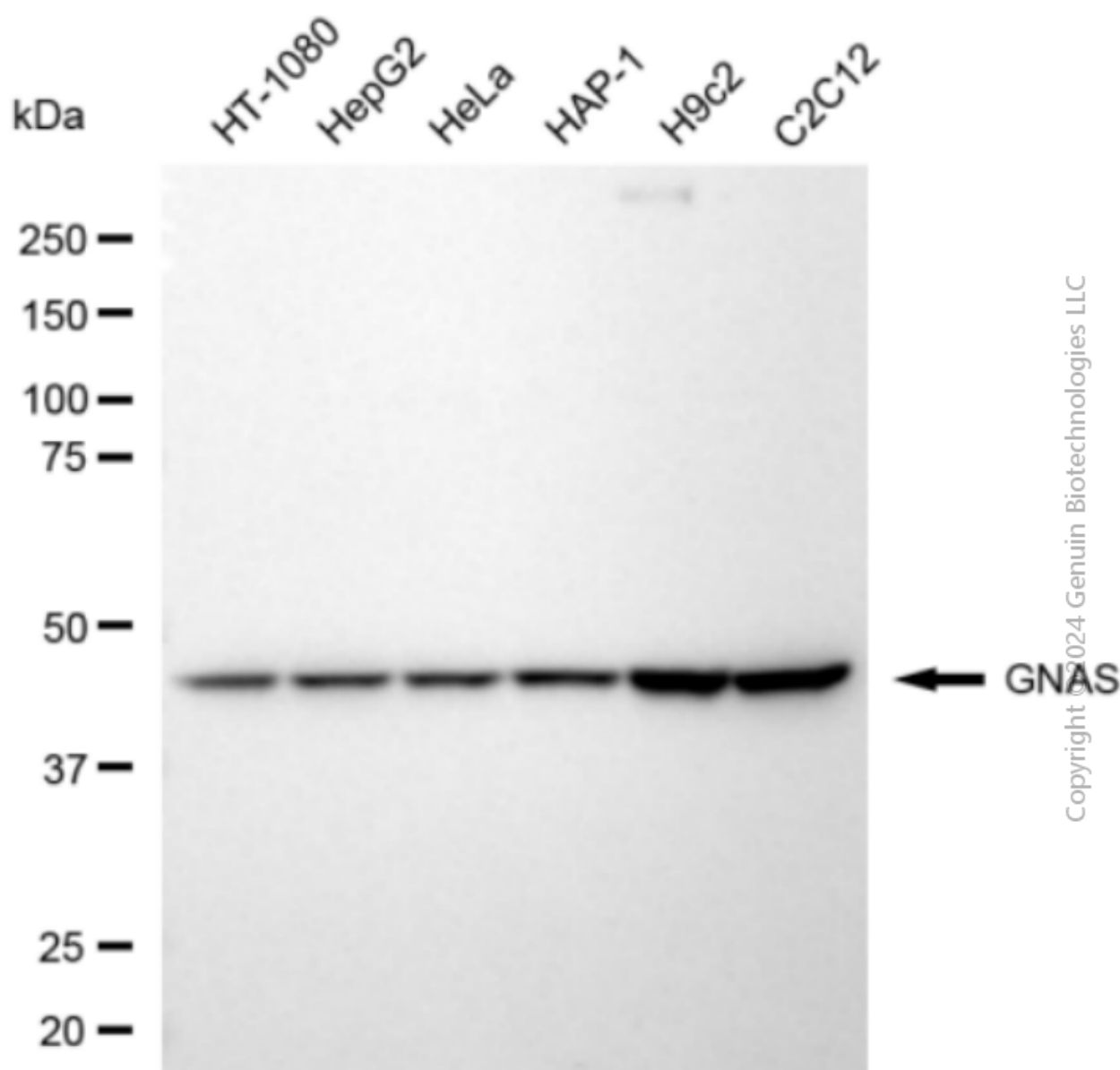
SUPPORT

SUPPORT@GENUINBIOTECH.COM
TEL: +1-540-855-7041

ORDERS

SALES@GENUINBIOTECH.COM
FAX: +1-540-855-7041

WWW.GENUINBIOTECH.COM



Western blotting analysis using anti-GNAS antibody (Cat#4823). Total cell lysates (30 μ g) from various cell lines were loaded and separated by SDS-PAGE. The blot was incubated with anti-GNAS antibody (Cat#4823, 1:2,500) and HRP-conjugated goat anti-mouse secondary antibody (Cat#101, 1:20,000) respectively. Image was developed using NaQ™ ECL Substrate Kit (Cat#716).

SUPPORT

SUPPORT@GENUINBIOTECH.COM
TEL: +1-540-855-7041

ORDERS

SALES@GENUINBIOTECH.COM
FAX: +1-540-855-7041

WWW.GENUINBIOTECH.COM