

Catalog #: 4833

Aliases

GTF3C4; General Transcription Factor IIIC Subunit 4; TFIIC90; KAT12; General Transcription Factor IIIC, Polypeptide 4, 90kDa; General Transcription Factor 3C Polypeptide 4; Transcription Factor IIIC 90 KDa Subunit; Transcription Factor IIIC Subunit Delta; TFIIC 90 KDa Subunit; TF3C-Delta; General Transcription Factor IIIC, Polypeptide 4 (90kD); General Transcription Factor 3C 4; TFIICDELTA; EC 2.3.1.48; TFIIC290; TFIIC90

Background

Gene Name: GTF3C4

NCBI Gene Entry: [9329](#)

UniProt Entry: [Q9UKN8](#)

Application Information

Molecular Weight: Predicted, 92 kDa; observed, 80 kDa

Clonality: Mouse monoclonal antibody

Clone ID: 24GB13170

Species Reactivity: Human

Applications Tested: Western blotting (WB), immunocytochemistry (IC), flow cytometry (FCM)

Immunogen

Recombinant protein of human GTF3C4

Isotype

Mouse IgG1

Storage Buffer

Supplied in PBS (pH 7.4) containing 50% glycerol, and 0.02% sodium azide.

Storage

Store at -20 °C for one year.

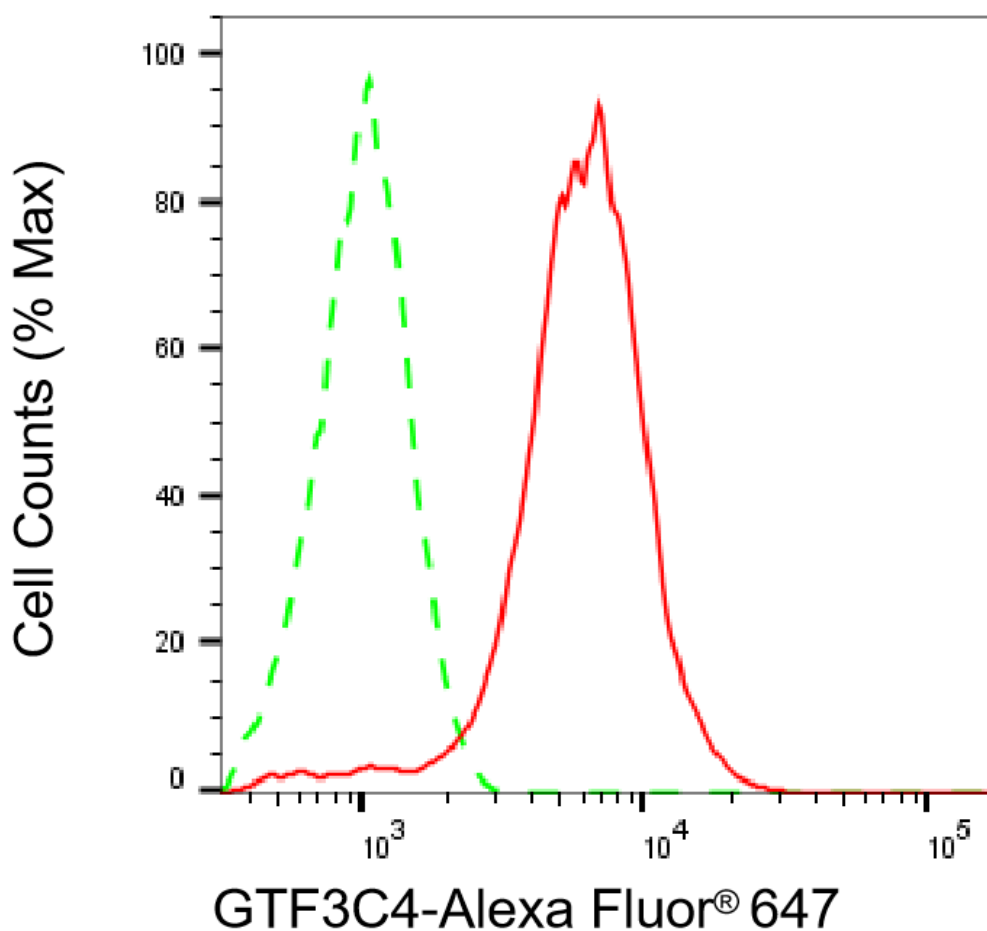
Recommended Dilutions

Western Blotting (WB): 1:200-1:1,000

Immunocytochemistry (IC): 1:100-1:1,000

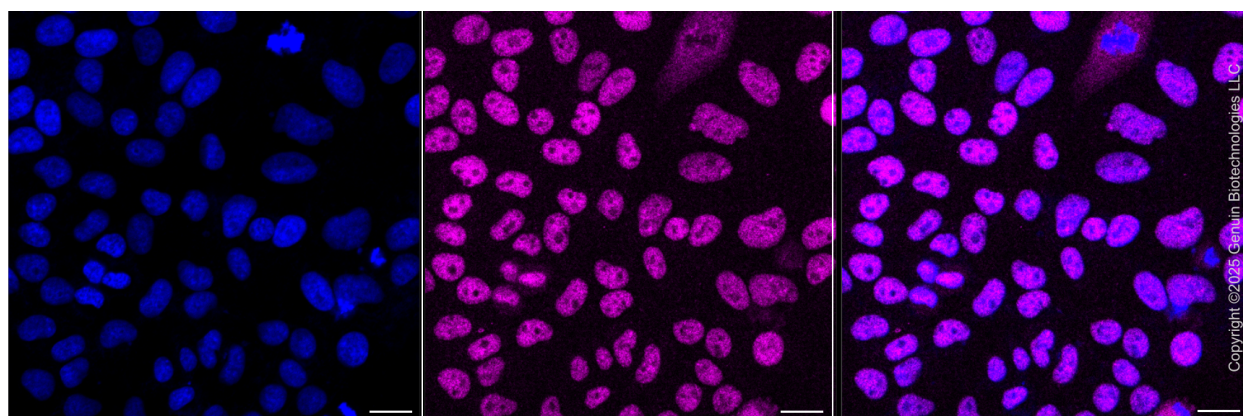
Note: This product is for research use only.

Validation Data



Copyright ©2025 Genuin Biotechnologies LLC

Flow cytometric analysis of GTF3C4 expression in HepG2 cells using anti-GTF3C4 antibody (Cat#4833, 1:2,000). Green, isotype control; red, GTF3C4.



Copyright ©2025 Genuin Biotechnologies LLC

SUPPORT

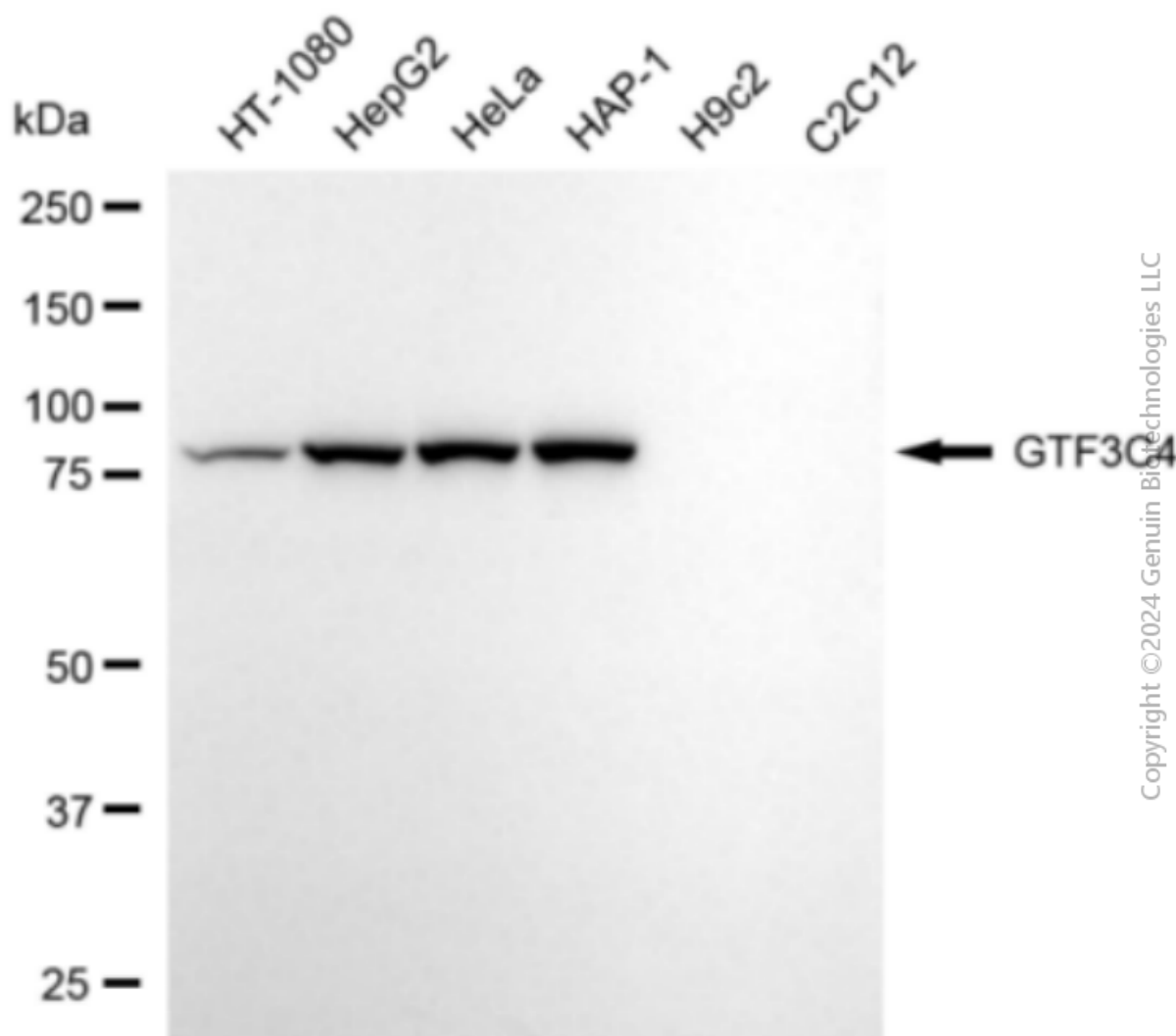
SUPPORT@GENUINBIOTECH.COM
TEL: +1-540-855-7041

ORDERS

SALES@GENUINBIOTECH.COM
FAX: +1-540-855-7041

WWW.GENUINBIOTECH.COM

Immunocytochemical staining of HepG2 cells with anti-GTF3C4 associated protein antibody (Cat#4833, 1:1,000) . Nuclei were stained blue with DAPI; GTF3C4 associated protein was stained magenta with Alexa Fluor® 647. Images were taken using Leica stellaris 5. Protein abundance based on laser Intensity and smart gain: Medium. Scale bar, 20 µm.



Western blotting analysis using anti-GTF3C4 antibody (Cat#4833). Total cell lysates (30 µg) from various cell lines were loaded and separated by SDS-PAGE. The blot was incubated with anti-GTF3C4 antibody (Cat#4833, 1:1,000) and HRP-conjugated goat anti-mouse secondary antibody (Cat#101, 1:20,000) respectively. Image was developed using NaQ™ ECL Substrate Kit (Cat#716).