

Anti-SATB Homeobox 1 Mouse Monoclonal Antibody



Catalog #: 4836

Aliases

SATB1; SATB Homeobox 1; Special AT-Rich Sequence Binding Protein 1 (Binds To Nuclear Matrix/Scaffold-Associating DNA); DNA-Binding Protein SATB1; Special AT-Rich Sequence-Binding Protein 1; DEFDA; DHDBV; KTZSL

Background

Gene Name: SATB1

NCBI Gene Entry: [6304](#)

UniProt Entry: [Q01826](#)

Application Information

Molecular Weight: Predicted, 86 kDa; observed, 100 kDa

Clonality: Mouse monoclonal antibody

Clone ID: 24GB13185

Species Reactivity: Human

Applications Tested: Western blotting (WB), immunocytochemistry (IC)

Immunogen

Recombinant protein of human SATB1

Isotype

Mouse IgG1

Storage Buffer

Supplied in PBS (pH 7.4) containing 50% glycerol, and 0.02% sodium azide.

Storage

Store at -20 °C for one year.

Recommended Dilutions

Western Blotting (WB): 1:500-1:2,500

Immunocytochemistry (IC): 1:100-1:1,000

Note: This product is for research use only.

Validation Data

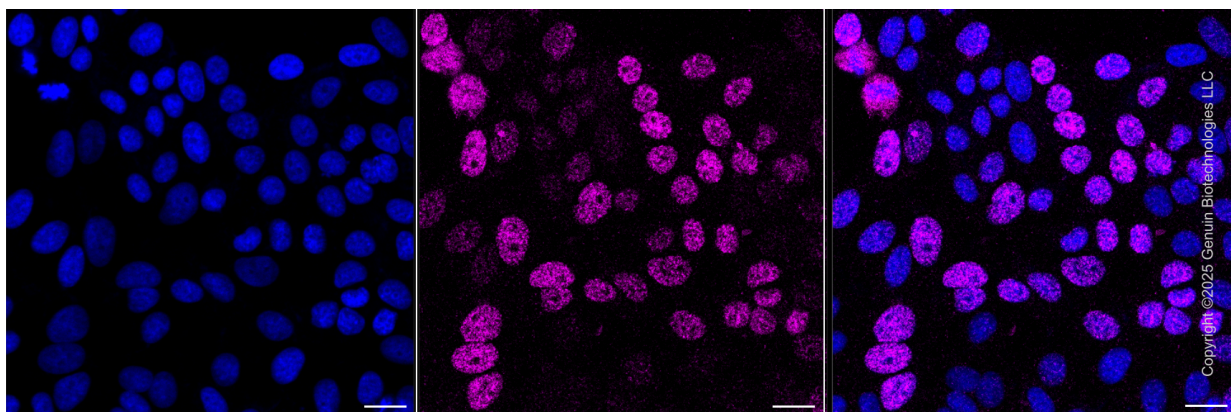
SUPPORT

SUPPORT@GENUINBIOTECH.COM
TEL: +1-540-855-7041

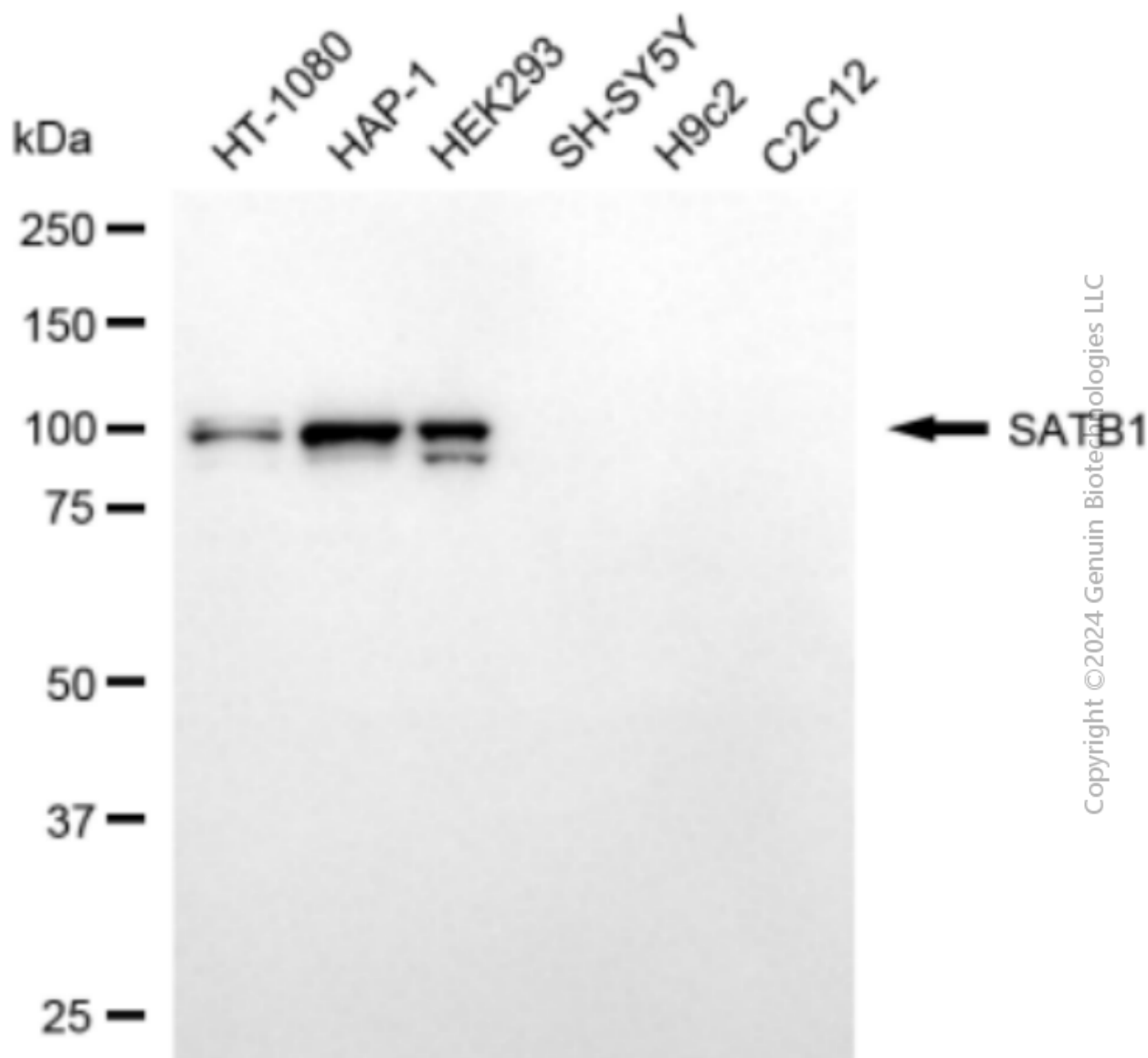
ORDERS

SALES@GENUINBIOTECH.COM
FAX: +1-540-855-7041

WWW.GENUINBIOTECH.COM



Immunocytochemical staining of HepG2 cells with anti-SATB1 associated protein antibody (Cat#4836, 1:1,000) . Nuclei were stained blue with DAPI; SATB1 associated protein was stained magenta with Alexa Fluor® 647. Images were taken using Leica stellaris 5. Protein abundance based on laser Intensity and smart gain: Low. Scale bar, 20 μ m.



Western blotting analysis using anti-SATB1 antibody (Cat#4836). Total cell lysates (30 µg) from various cell lines were loaded and separated by SDS-PAGE. The blot was incubated with anti-SATB1 antibody (Cat#4836, 1:2,500) and HRP-conjugated goat anti-mouse secondary antibody (Cat#101, 1:20,000) respectively. Image was developed using FeQ™ ECL Substrate Kit (Cat#226).