

## Catalog #: 4844

## Aliases

VCAM1; Vascular Cell Adhesion Molecule 1; CD106; Vascular Cell Adhesion Protein 1; CD106 Antigen; INCAM-100; V-CAM 1; VCAM-1

## Background

Gene Name: VCAM1

NCBI Gene Entry: [7412](#)

UniProt Entry: [P19320](#)

## Application Information

Molecular Weight: Predicted, 81 kDa; observed, 88 kDa

Clonality: Mouse monoclonal antibody

Clone ID: 24GB13225

Species Reactivity: Human, mouse, rat

Applications Tested: Western blotting (WB), immunocytochemistry (IC)

## Immunogen

Recombinant protein of human VCAM1

## Isotype

Mouse IgG1

## Storage Buffer

Supplied in PBS (pH 7.4) containing 50% glycerol, and 0.02% sodium azide.

## Storage

Store at -20 °C for one year.

## Recommended Dilutions

Western Blotting (WB): 1:500-1:2,500

Immunocytochemistry (IC): 1:100-1:1,000

**Note:** This product is for research use only.

## Validation Data

---

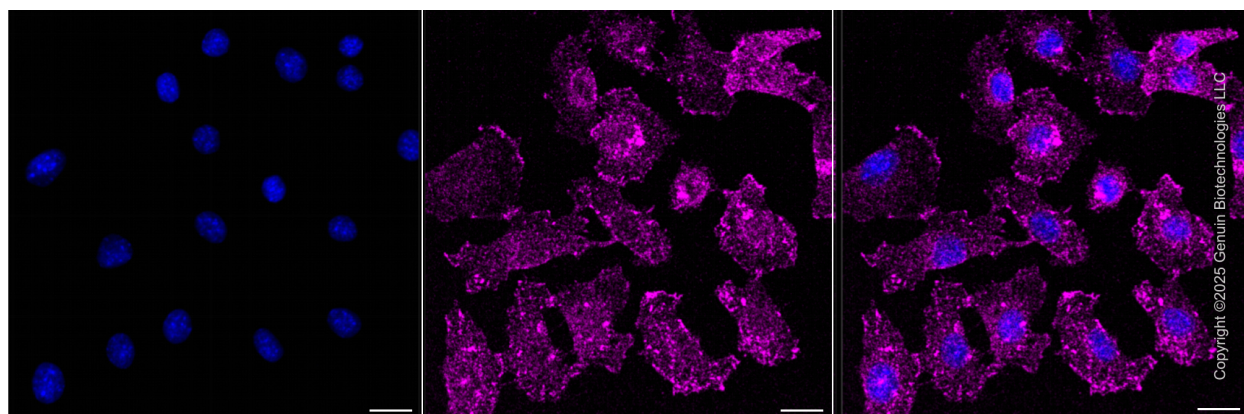
### SUPPORT

SUPPORT@GENUINBIOTECH.COM  
TEL: +1-540-855-7041

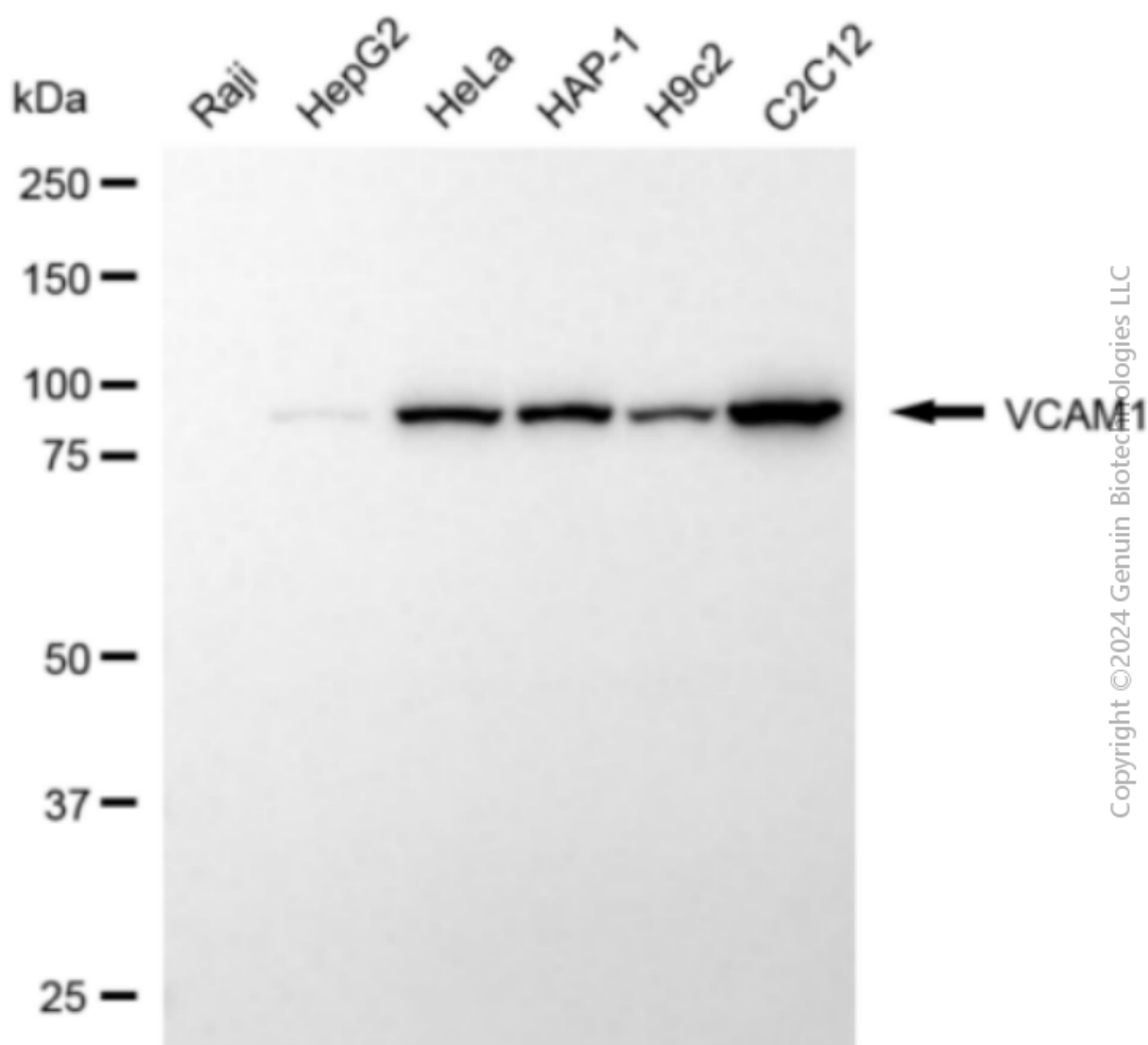
### ORDERS

SALES@GENUINBIOTECH.COM  
FAX: +1-540-855-7041

[WWW.GENUINBIOTECH.COM](http://WWW.GENUINBIOTECH.COM)



Immunocytochemical staining of C2C12 cells with anti-VCAM1 associated protein antibody (Cat#4844, 1:1,000) . Nuclei were stained blue with DAPI; VCAM1 associated protein was stained magenta with Alexa Fluor® 647. Images were taken using Leica stellaris 5. Protein abundance based on laser Intensity and smart gain: Medium. Scale bar, 20  $\mu$ m.



Western blotting analysis using anti-VCAM1 antibody (Cat#4844). Total cell lysates (30  $\mu$ g) from various cell lines were loaded and separated by SDS-PAGE. The blot was incubated with anti-VCAM1 antibody (Cat#4844, 1:2,500) and HRP-conjugated goat anti-mouse secondary antibody (Cat#101, 1:20,000) respectively. Image was developed using NaQ™ ECL Substrate Kit (Cat#716).

**SUPPORT**

SUPPORT@GENUINBIOTECH.COM  
TEL: +1-540-855-7041

**ORDERS**

SALES@GENUINBIOTECH.COM  
FAX: +1-540-855-7041

[WWW.GENUINBIOTECH.COM](http://WWW.GENUINBIOTECH.COM)