

## Catalog #: 4854

### Aliases

MRPS27; Mitochondrial Ribosomal Protein S27; KIAA0264; MS27; 28S Ribosomal Protein S27, Mitochondrial; Small Ribosomal Subunit Protein MS27; MRP-S27; S27mt ; Mitochondrial Small Ribosomal Subunit Protein MS27; Mitochondrial 28S Ribosomal Protein S27

### Background

Gene Name: MRPS27

NCBI Gene Entry: [23107](#)

UniProt Entry: [Q92552](#)

### Application Information

Molecular Weight: Predicted, 48 kDa; observed, 43 kDa

Clonality: Mouse monoclonal antibody

Clone ID: 24GB13275

Species Reactivity: Human

Applications Tested: Western blotting (WB)

### Immunogen

Recombinant protein of human MRPS27

### Isotype

Mouse IgG1

### Storage Buffer

Supplied in PBS (pH 7.4) containing 50% glycerol, and 0.02% sodium azide.

### Storage

Store at -20 °C for one year.

### Recommended Dilutions

Western Blotting (WB): 1:500-1:2,500

**Note:** This product is for research use only.

### Validation Data

---

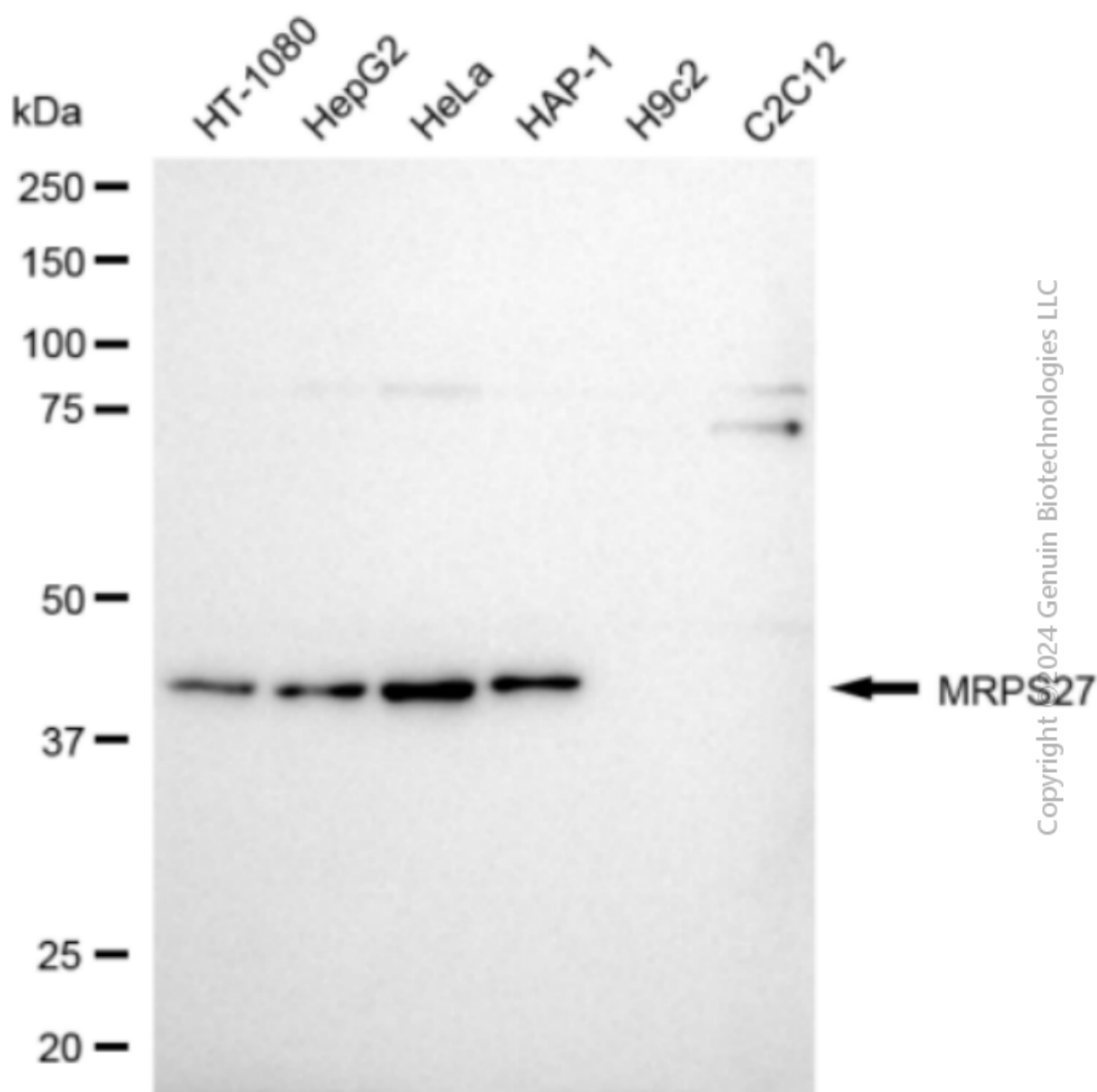
#### SUPPORT

SUPPORT@GENUINBIOTECH.COM  
TEL: +1-540-855-7041

#### ORDERS

SALES@GENUINBIOTECH.COM  
FAX: +1-540-855-7041

[WWW.GENUINBIOTECH.COM](http://WWW.GENUINBIOTECH.COM)



Western blotting analysis using anti-MRPS27 antibody (Cat#4854). Total cell lysates (30  $\mu$ g) from various cell lines were loaded and separated by SDS-PAGE. The blot was incubated with anti-MRPS27 antibody (Cat#4854, 1:2,500) and HRP-conjugated goat anti-mouse secondary antibody (Cat#101, 1:20,000) respectively. Image was developed using NaQ™ ECL Substrate Kit (Cat#716).