

Catalog #: 4869

Aliases

WTAP; WT1 Associated Protein; KIAA0105; Mum2; Wilms Tumor 1-Associating Protein; Wilms Tumor 1 Associated Protein; Pre-mRNA-Splicing Regulator WTAP; Female-Lethal(2)D Homolog; MGC3925; HFL(2)D; Putative Pre-mRNA Splicing Regulator Female-Lethal(2D); Wilms' Tumour 1-Associating Protein; WT1-Associated Protein; PNAS-132

Background

Gene Name: WTAP

NCBI Gene Entry: [9589](#)

UniProt Entry: [Q15007](#)

Application Information

Molecular Weight: Predicted, 44 kDa; observed, 55 kDa

Clonality: Mouse monoclonal antibody

Clone ID: 24GB13350

Species Reactivity: Human, mouse, rat

Applications Tested: Western blotting (WB), immunocytochemistry (IC), flow cytometry (FCM)

Immunogen

Recombinant protein of human WTAP

Isotype

Mouse IgG1

Storage Buffer

Supplied in PBS (pH 7.4) containing 50% glycerol, and 0.02% sodium azide.

Storage

Store at -20 °C for one year.

Recommended Dilutions

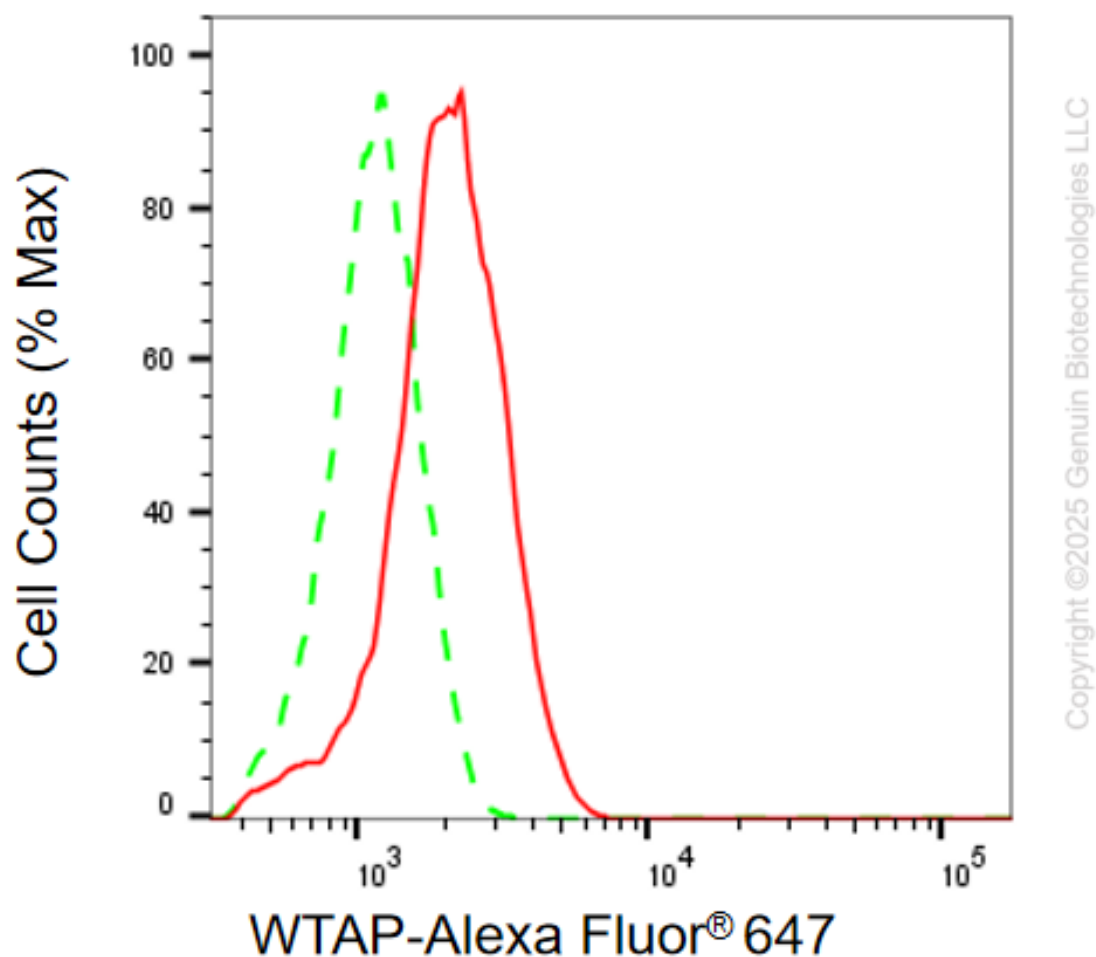
Western Blotting (WB): 1:500-1:2,500

Immunohistochemistry (IHC): 1:100-1:1,000

Flow Cytometry (FCM) : 1:2,000

Note: This product is for research use only.

Validation Data



Flow cytometric analysis of WTAP expression in HeLa cells using anti-WTAP antibody (Cat#4869, 1 μ g/2000). Green, isotype control; red, WTAP.

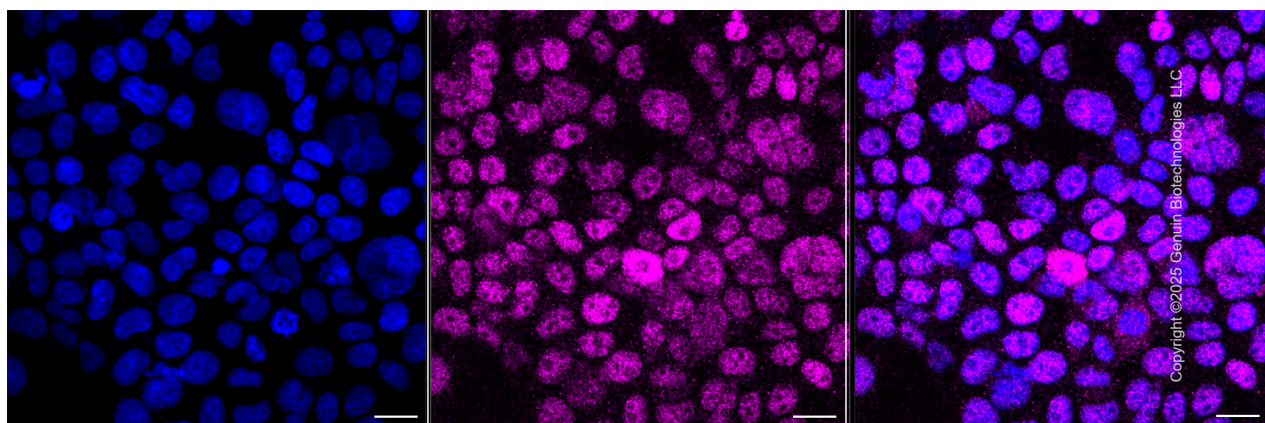
SUPPORT

SUPPORT@GENUINBIOTECH.COM
TEL: +1-540-855-7041

ORDERS

SALES@GENUINBIOTECH.COM
FAX: +1-540-855-7041

WWW.GENUINBIOTECH.COM



Immunocytochemical staining of HeLa cells with anti-WTAP associated protein antibody (Cat#4869, 1:1000) . Nuclei were stained blue with DAPI; WTAP associated protein was stained magenta with Alexa Fluor® 647. Images were taken using Leica stellaris 5. Protein abundance based on laser Intensity and smart gain: Low. Scale bar, 20 μ m. Permeabilization: Triton.

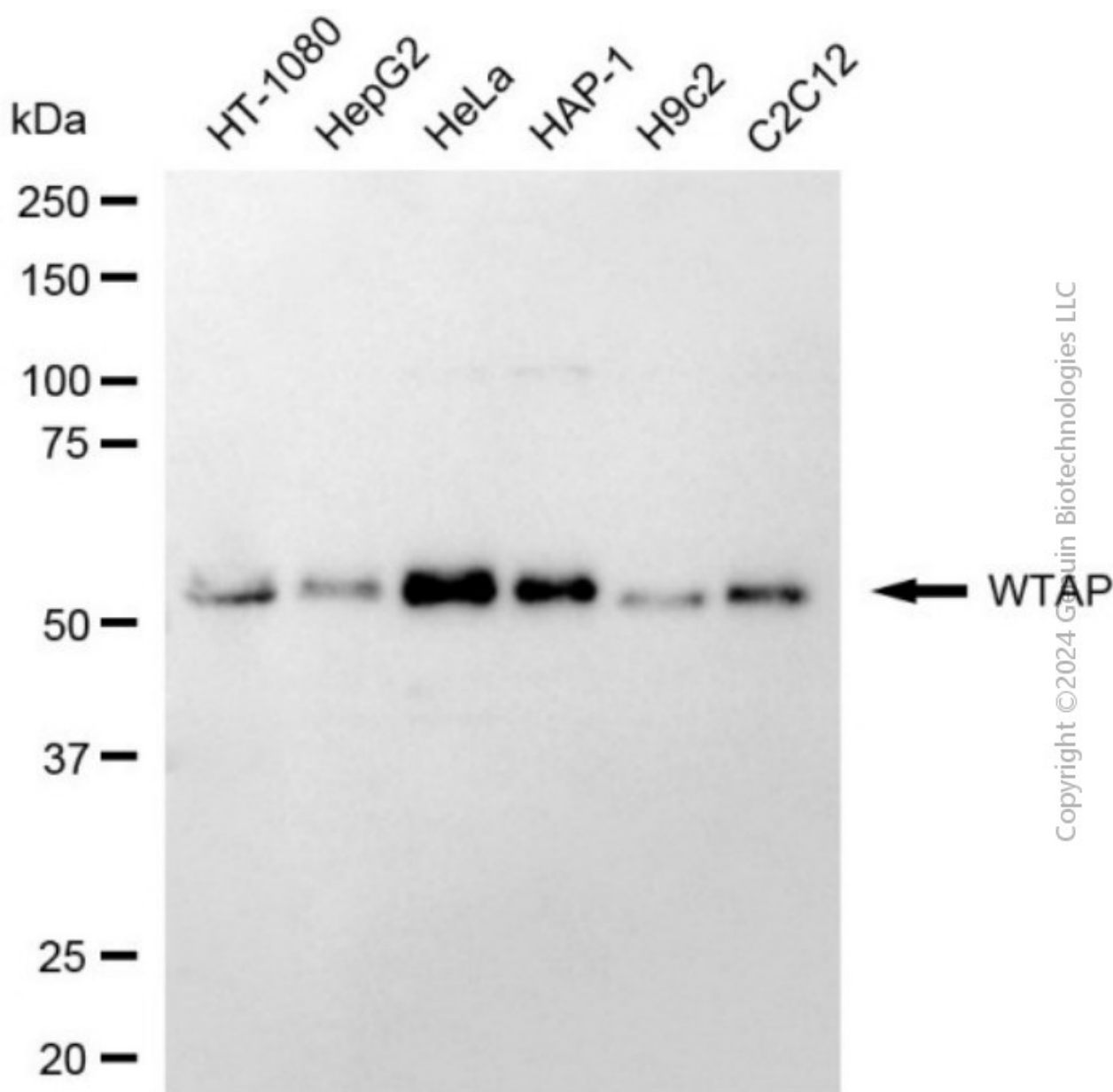
SUPPORT

SUPPORT@GENUINBIOTECH.COM
TEL: +1-540-855-7041

ORDERS

SALES@GENUINBIOTECH.COM
FAX: +1-540-855-7041

WWW.GENUINBIOTECH.COM



Western blotting analysis using anti-WTAP antibody (Cat #4869). Total cell lysates (30 μ g) from various cell lines were loaded and separated by SDS-PAGE. The blot was incubated with anti-WTAP antibody (Cat #4869, 1:2,500) and HRP-conjugated goat anti-mouse secondary antibody (Cat #101, 1:20,000) respectively. Image was developed using FeQTM ECL Substrate Kit (Cat #226).

SUPPORT

SUPPORT@GENUINBIOTECH.COM
TEL: +1-540-855-7041

ORDERS

SALES@GENUINBIOTECH.COM
FAX: +1-540-855-7041

WWW.GENUINBIOTECH.COM