

Catalog #: 4876

Aliases

PIN1; Peptidylprolyl Cis/Trans Isomerase, NIMA-Interacting 1; Dod; Protein (Peptidyl-Prolyl Cis/Trans Isomerase) NIMA-Interacting 1; Peptidyl-Prolyl Cis-Trans Isomerase NIMA-Interacting 1; Protein Interacting With Never In Mitosis A1; Parvulin PIN1; Rotamase Pin1; PPIase Pin1; EC 5.2.1.8; Peptidyl-Prolyl Cis-Trans Isomerase Pin1; UBL5

Background

Gene Name: PIN1

NCBI Gene Entry: [5300](#)

UniProt Entry: [Q13526](#)

Application Information

Molecular Weight: Predicted, 18 kDa; observed, 17 kDa

Clonality: Mouse monoclonal antibody

Clone ID: 24GB13385

Species Reactivity: Human, mouse, rat

Applications Tested: Western blotting (WB)

Immunogen

Recombinant protein of human PIN1

Isotype

Mouse IgG1

Storage Buffer

Supplied in PBS (pH 7.4) containing 50% glycerol, and 0.02% sodium azide.

Storage

Store at -20 °C for one year.

Recommended Dilutions

Western Blotting (WB): 1:200-1:1,000

Note: This product is for research use only.

Validation Data

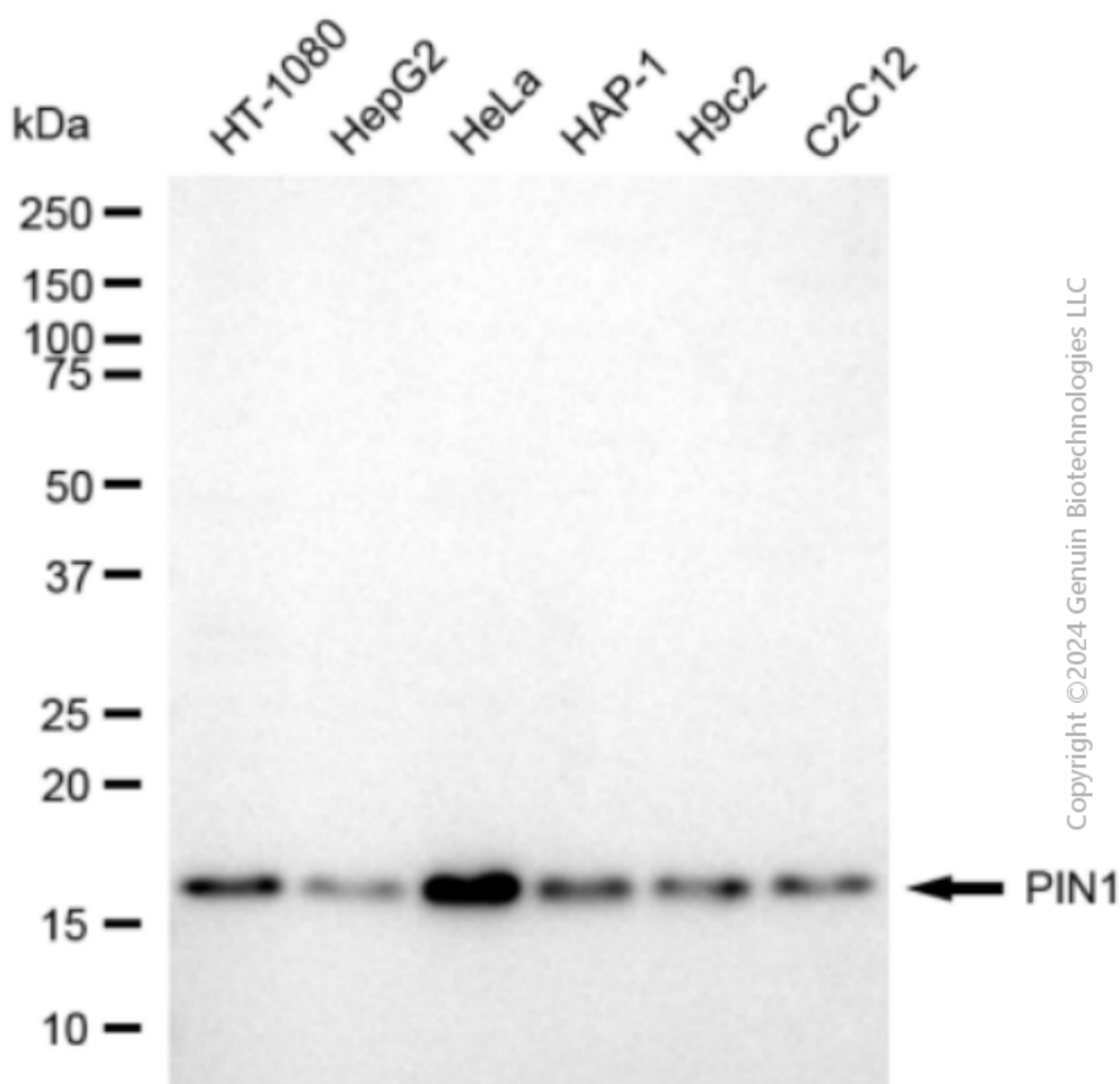
SUPPORT

SUPPORT@GENUINBIOTECH.COM
TEL: +1-540-855-7041

ORDERS

SALES@GENUINBIOTECH.COM
FAX: +1-540-855-7041

WWW.GENUINBIOTECH.COM



Western blotting analysis using anti-PIN1 antibody (Cat#4876). Total cell lysates (30 μ g) from various cell lines were loaded and separated by SDS-PAGE. The blot was incubated with anti-PIN1 antibody (Cat#4876, 1:1,000) and HRP-conjugated goat anti-mouse secondary antibody (Cat#101, 1:20,000) respectively. Image was developed using FeQTM ECL Substrate Kit (Cat#226).

SUPPORT

SUPPORT@GENUINBIOTECH.COM
TEL: +1-540-855-7041

ORDERS

SALES@GENUINBIOTECH.COM
FAX: +1-540-855-7041

WWW.GENUINBIOTECH.COM