

Catalog #: 4878

Aliases

ARHGDIB; Rho GDP Dissociation Inhibitor Beta; Ly-GDI 2; RhoGDI2; RAP1GN1; GDIA2; GDID4; Rho GDP Dissociation Inhibitor (GDI) Beta; Rho GDP-Dissociation Inhibitor 2; Rho-GDI Beta; Rho GDI 2; LYGDI; D4

Background

Gene Name: ARHGDIB

NCBI Gene Entry: [397](#)

UniProt Entry: [P52566](#)

Application Information

Molecular Weight: Predicted, 23 kDa; observed, 23 kDa

Clonality: Rabbit monoclonal antibody

Clone ID: 24GB6895

Species Reactivity: Human

Applications Tested: Western blotting (WB)

Immunogen

A synthesized peptide derived from human D4 GDI

Isotype

Rabbit IgG

Storage Buffer

Supplied in PBS (pH 7.4) containing 50% glycerol, and 0.02% sodium azide.

Storage

Store at -20 °C for one year.

Recommended Dilutions

Western Blotting (WB): 1:1,000-1:5,000

Note: This product is for research use only.

Validation Data

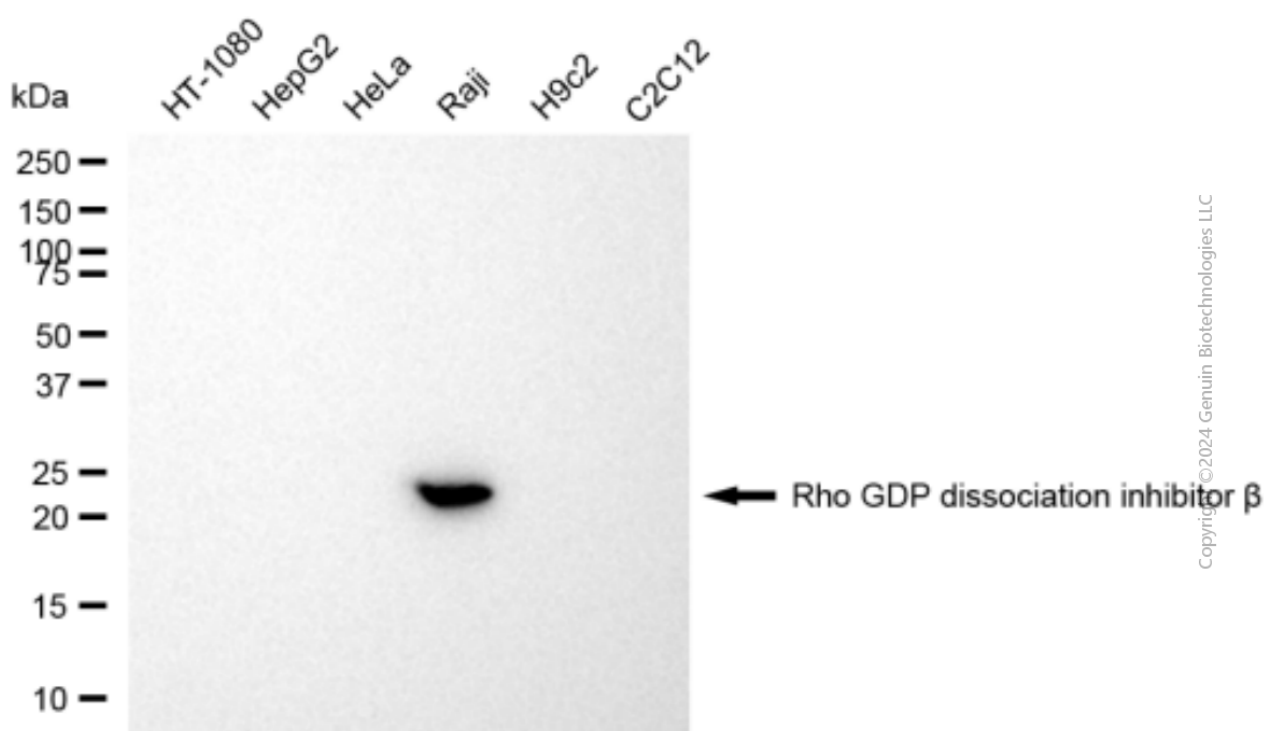
SUPPORT

SUPPORT@GENUINBIOTECH.COM
TEL: +1-540-855-7041

ORDERS

SALES@GENUINBIOTECH.COM
FAX: +1-540-855-7041

WWW.GENUINBIOTECH.COM



Western blotting analysis using anti-Rho GDP dissociation inhibitor beta antibody (Cat#4878). Total cell lysates (30 μ g) from various cell lines were loaded and separated by SDS-PAGE. The blot was incubated with anti-Rho GDP dissociation inhibitor beta antibody (Cat#4878, 1:2,500) and HRP-conjugated goat anti-rabbit secondary antibody (Cat#201, 1:20,000) respectively. Image was developed using NaQ™ ECL Substrate Kit (Cat#716).