

Catalog #: 4879

Aliases

TOMM20; Translocase Of Outer Mitochondrial Membrane 20; KIAA0016; TOM20; MOM19; MAS20; Translocase Of Outer Mitochondrial Membrane 20 Homolog Type II; Mitochondrial Import Receptor Subunit TOM20 Homolog; Mitochondrial 20 KDa Outer Membrane Protein; Outer Mitochondrial Membrane Receptor Tom20; Translocase Of Outer Mitochondrial Membrane 20 Homolog (Yeast)

Background

Gene Name: TOMM20

NCBI Gene Entry: [9804](#)

UniProt Entry: [Q15388](#)

Application Information

Molecular Weight: Predicted, 16 kDa; observed, 16 kDa

Clonality: Mouse monoclonal antibody

Clone ID: 24GB15770

Species Reactivity: Human, mouse, rat

Applications Tested: Western blotting (WB), flow cytometry (FCM), immunocytochemistry (IC)

Immunogen

Recombinant protein of human TOMM20

Isotype

Mouse IgG1

Storage Buffer

Supplied in PBS (pH 7.4) containing 50% glycerol, and 0.02% sodium azide.

Storage

Store at -20 °C for one year.

Recommended Dilutions

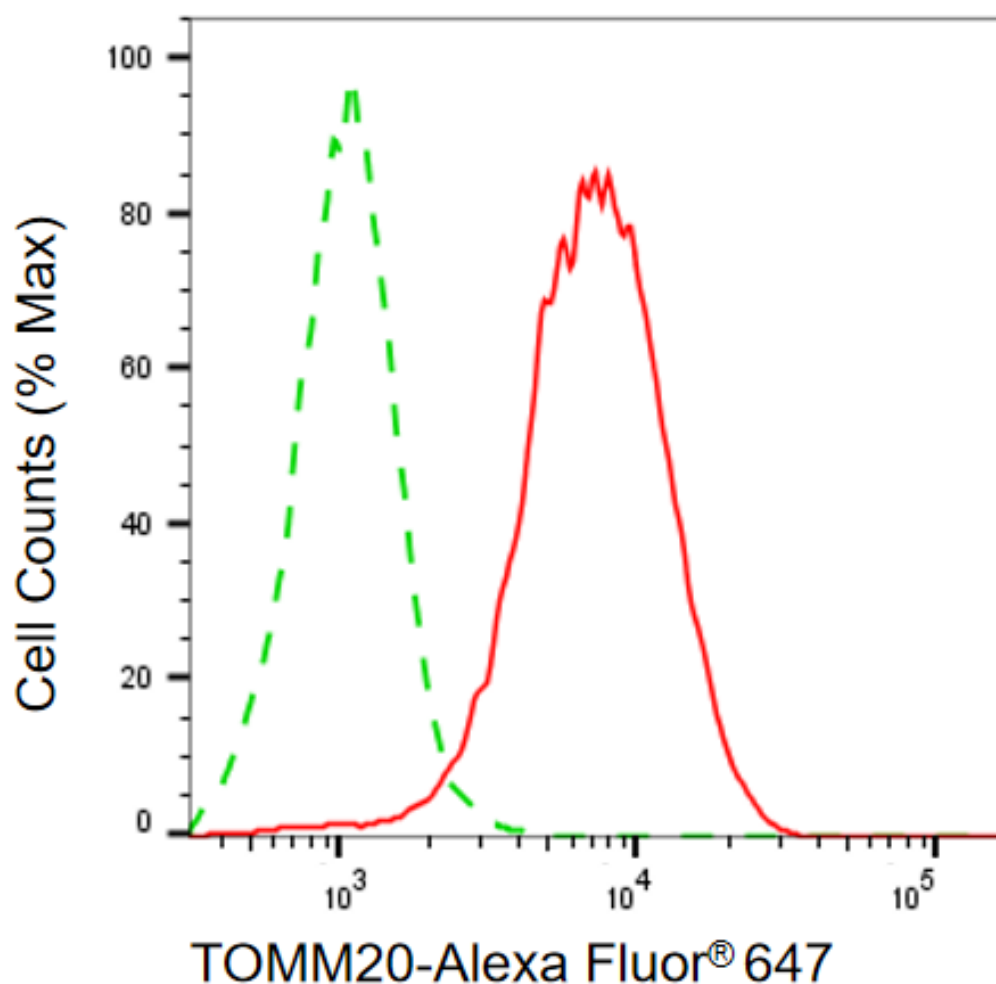
Western Blotting (WB): 1:500-1:2,500

Flow Cytometry (FCM): 1:1,000

Immunocytochemistry (IC): 1:100-1:1,000

Note: This product is for research use only.

Validation Data



Copyright ©2025 Genuin Biotechnologies LLC

Flow cytometric analysis of TOMM20 expression in HepG2 cells using anti-TOMM20 antibody (Cat#4879, 1:1,000) . Green, isotype control; red, TOMM20.

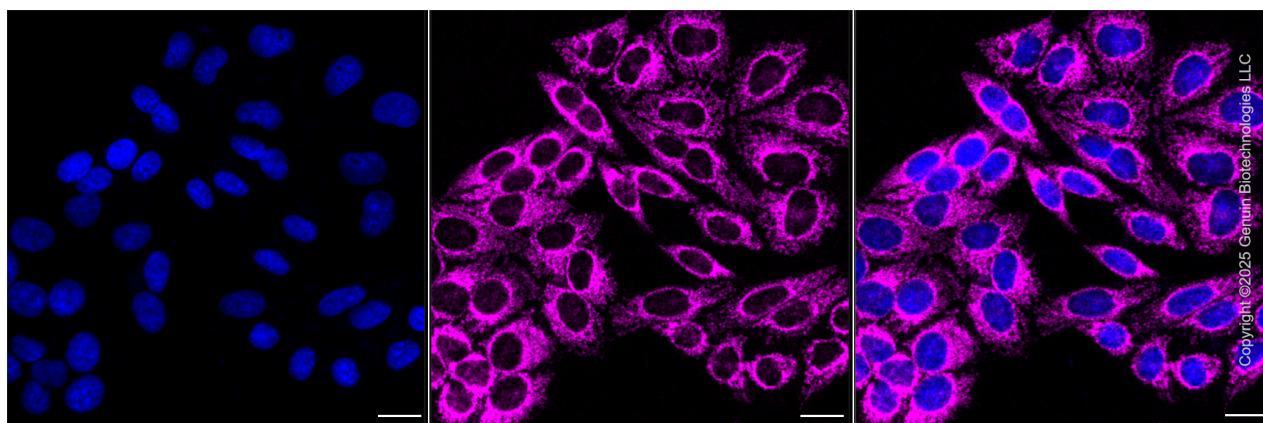
SUPPORT

SUPPORT@GENUINBIOTECH.COM
TEL: +1-540-855-7041

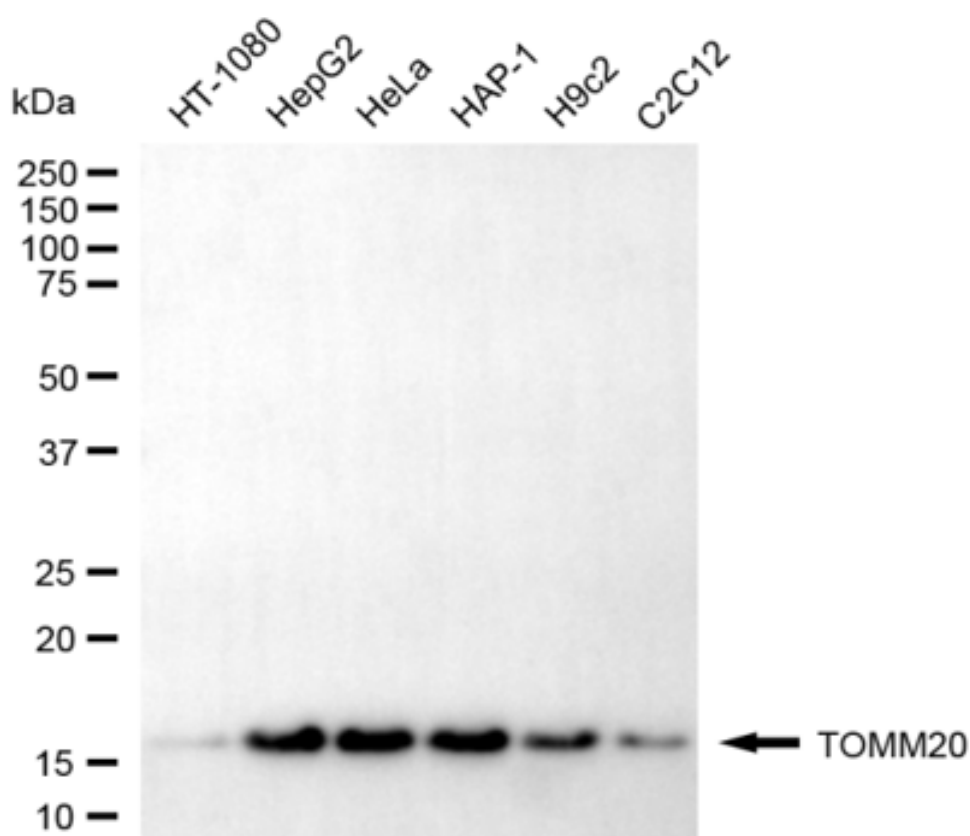
ORDERS

SALES@GENUINBIOTECH.COM
FAX: +1-540-855-7041

WWW.GENUINBIOTECH.COM



Immunocytochemical staining of HepG2 cells with anti-TOMM20 antibody (Cat#4879, 1:1,000) . Nuclei were stained blue with DAPI; TOMM20 was stained magenta with Alexa Fluor® 647. Images were taken using Leica stellaris 5. Protein abundance based on laser Intensity and smart gain: Medium. Scale bar, 20 μ m.



Western blotting analysis using anti-TOMM20 antibody (Cat#4879). Total cell lysates (30 μ g) from various cell lines were loaded and separated by SDS-PAGE. The blot was incubated with anti-TOMM20 antibody (Cat#4879, 1:2,500) and HRP-conjugated goat anti-mouse secondary

SUPPORT

SUPPORT@GENUINBIOTECH.COM
TEL: +1-540-855-7041

ORDERS

SALES@GENUINBIOTECH.COM
FAX: +1-540-855-7041

WWW.GENUINBIOTECH.COM

antibody (Cat#101, 1:20,000) respectively. Image was developed using NaQ™ ECL Substrate Kit (Cat#716).

SUPPORT

SUPPORT@GENUINBIOTECH.COM
TEL: +1-540-855-7041

ORDERS

SALES@GENUINBIOTECH.COM
FAX: +1-540-855-7041

WWW.GENUINBIOTECH.COM