

Catalog #: 4882

Aliases

LEPR; Leptin Receptor; OBR; CD295; OB Receptor; HuB219; LEP-R; OB-R; CD295 Antigen; LEPRD; DB

Background

Gene Name: LEPR

NCBI Gene Entry: [3953](#)

UniProt Entry: [P48357](#)

Application Information

Molecular Weight: Predicted, 132 kDa; observed, 100 kDa

Clonality: Mouse monoclonal antibody

Clone ID: 24GB15785

Species Reactivity: Human, mouse, rat

Applications Tested: Western blotting (WB), flow cytometry (FCM)

Immunogen

Recombinant protein of human LEPR

Isotype

Mouse IgG1

Storage Buffer

Supplied in PBS (pH 7.4) containing 50% glycerol, and 0.02% sodium azide.

Storage

Store at -20 °C for one year.

Recommended Dilutions

Western Blotting (WB): 1:500-1:2,500

Flow Cytometry (FCM): 1:1,000

Note: This product is for research use only.

Validation Data

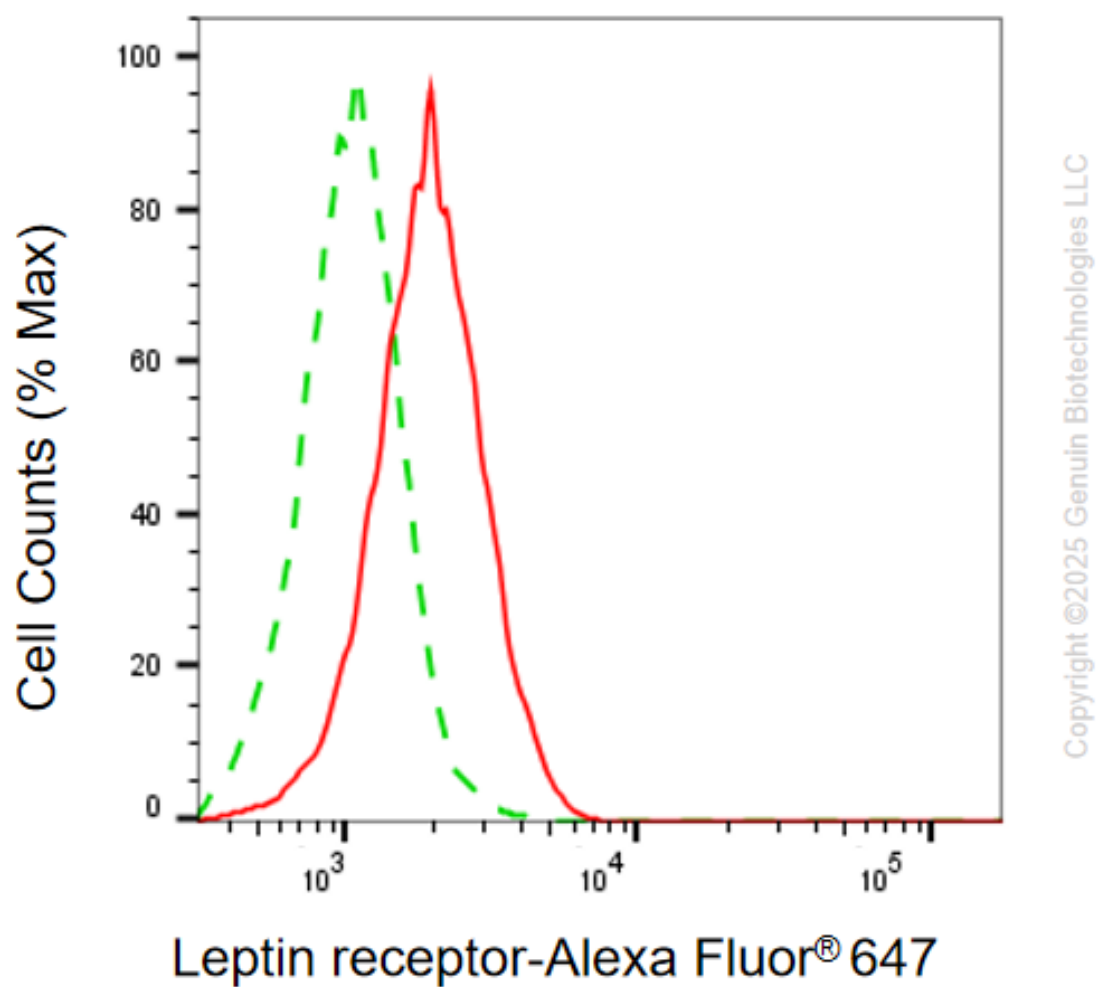
SUPPORT

SUPPORT@GENUINBIOTECH.COM
TEL: +1-540-855-7041

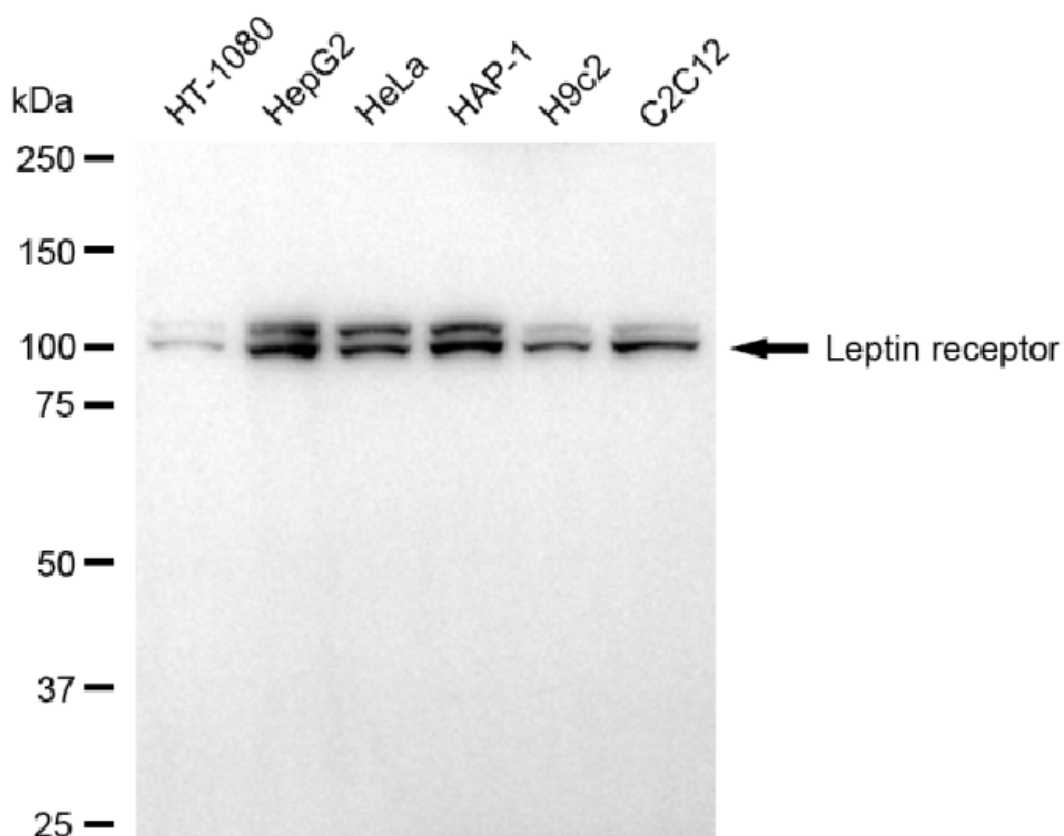
ORDERS

SALES@GENUINBIOTECH.COM
FAX: +1-540-855-7041

WWW.GENUINBIOTECH.COM



Flow cytometric analysis of Leptin receptor expression in HepG2 cells using anti-Leptin receptor antibody (Cat#4882, 1:1,000) . Green, isotype control; red, Leptin receptor.



Copyright ©2025 Genuin Biotechnologies LLC

Western blotting analysis using anti-leptin receptor antibody (Cat#4882). Total cell lysates (30 μ g) from various cell lines were loaded and separated by SDS-PAGE. The blot was incubated with anti-leptin receptor antibody (Cat#4882, 1:2,500) and HRP-conjugated goat anti-mouse secondary antibody (Cat#101, 1:20,000) respectively. Image was developed using FeQ™ ECL Substrate Kit (Cat#226).

SUPPORT

SUPPORT@GENUINBIOTECH.COM
TEL: +1-540-855-7041

ORDERS

SALES@GENUINBIOTECH.COM
FAX: +1-540-855-7041

WWW.GENUINBIOTECH.COM