

Catalog #: 4884

Aliases

GPC1; Glypican 1; Glypican; Glypican Proteoglycan 1; Glypican-1; Epididymis Secretory Sperm Binding Protein

Background

Gene Name: GPC1

NCBI Gene Entry: [2817](#)

UniProt Entry: [P35052](#)

Application Information

Molecular Weight: Predicted, 62 kDa; observed, 58 kDa

Clonality: Rabbit monoclonal antibody

Clone ID: 24GB13580

Species Reactivity: Human, rat

Applications Tested: Western blotting (WB), flow cytometry (FCM)

Immunogen

A synthesized peptide derived from human Glypican 1/GPC1

Isotype

Rabbit IgG

Storage Buffer

Supplied in PBS (pH 7.4) containing 50% glycerol, and 0.02% sodium azide.

Storage

Store at -20 °C for one year.

Recommended Dilutions

Western Blotting (WB): 1:1,000-1:5,000

Flow Cytometry (FCM) : 1:2,000

Note: This product is for research use only.

Validation Data

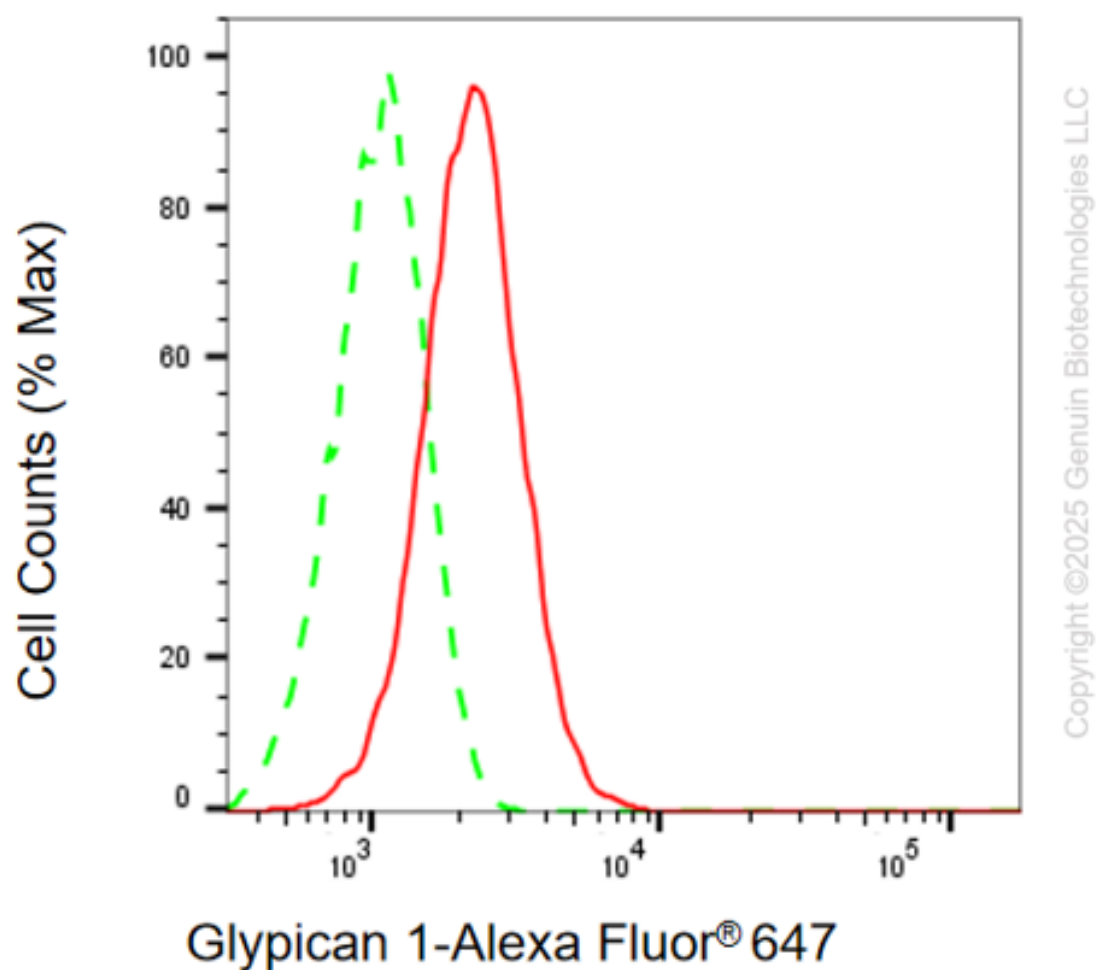
SUPPORT

SUPPORT@GENUINBIOTECH.COM
TEL: +1-540-855-7041

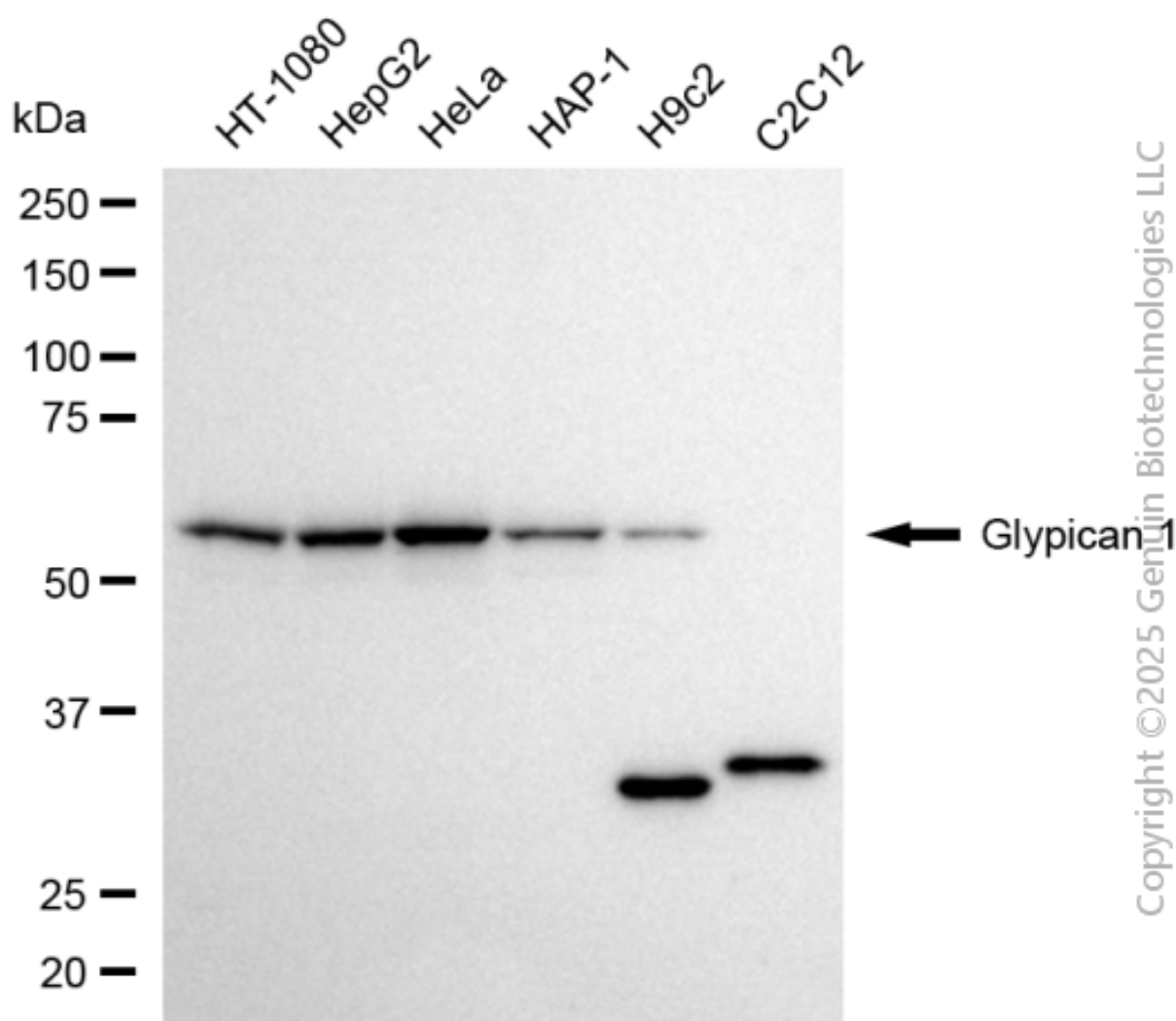
ORDERS

SALES@GENUINBIOTECH.COM
FAX: +1-540-855-7041

WWW.GENUINBIOTECH.COM



Flow cytometric analysis of Glypican 1 expression in HepG2 cells using anti-Glypican 1 antibody (Cat#4884, 1:1,000). Green, isotype control; red, Glypican 1.



Western blotting analysis using anti-glypican 1 antibody (Cat#4884). Total cell lysates (30 μ g) from various cell lines were loaded and separated by SDS-PAGE. The blot was incubated with anti-glypican 1 antibody (Cat#4884, 1:5,000) and HRP-conjugated goat anti-rabbit secondary antibody (Cat#201, 1:20,000) respectively. Image was developed using FeQ™ ECL Substrate Kit (Cat#226).