

## Catalog #: 4887

### Aliases

ACE; Angiotensin I Converting Enzyme; CD143; ACE1; DCP1; Angiotensin I Converting Enzyme (Peptidyl-Dipeptidase A) 1; Angiotensin-Converting Enzyme; Dipeptidyl Carboxypeptidase I; CD143 Antigen; Kininase II; DCP; Dipeptidyl Carboxypeptidase 1; Peptidyl-Dipeptidase A; Carboxycathepsin; Peptidase P; EC 3.4.15.

### Background

Gene Name: ACE

NCBI Gene Entry: [1636](#)

UniProt Entry: [P12821](#)

### Application Information

Molecular Weight: Predicted, 150 kDa; observed, 180 kDa

Clonality: Rabbit monoclonal antibody

Clone ID: 24GB13595

Species Reactivity: Mouse

Applications Tested: Western blotting (WB), immunocytochemistry (IC)

### Immunogen

Recombinant protein of mouse Angiotensin Converting Enzyme 1

### Isotype

Rabbit IgG

### Storage Buffer

Supplied in PBS (pH 7.4) containing 50% glycerol, and 0.02% sodium azide.

### Storage

Store at -20 °C for one year.

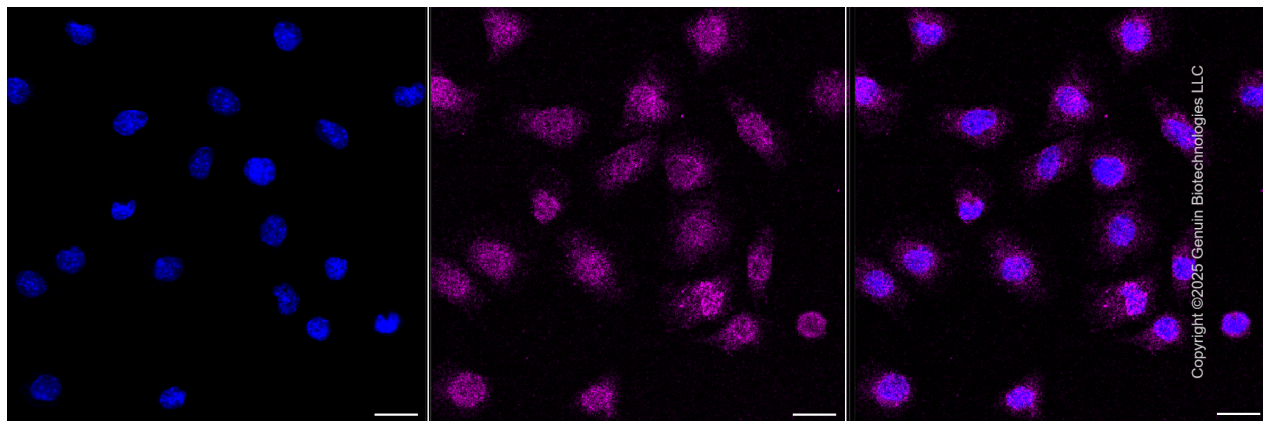
### Recommended Dilutions

Western Blotting (WB): 1:500-1:2,500

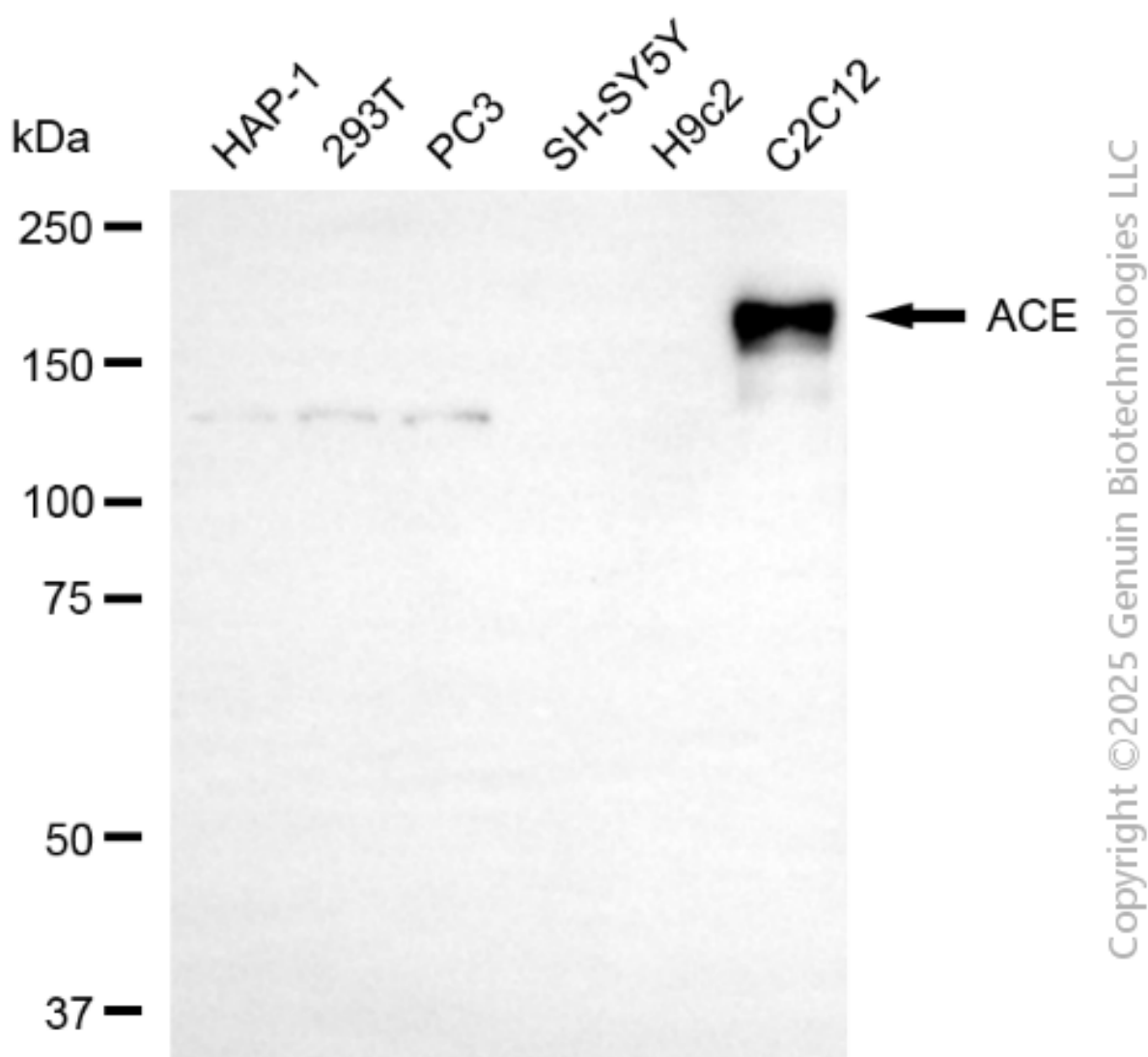
Immunocytochemistry (IC): 1:100-1:1,000

**Note:** This product is for research use only.

## Validation Data



Immunocytochemical staining of C2C12 cells with anti-ACE antibody (Cat#4887, 1:1,000) . Nuclei were stained blue with DAPI; ACE was stained magenta with Alexa Fluor® 647. Images were taken using Leica stellaris 5. Protein abundance based on laser Intensity and smart gain: Low. Scale bar, 20  $\mu$ m.



Western blotting analysis using anti-ACE antibody (Cat#4887). Total cell lysates (30  $\mu$ g) from various cell lines were loaded and separated by SDS-PAGE. The blot was incubated with anti-ACE antibody (Cat#4887, 1:2,500) and HRP-conjugated goat anti-rabbit secondary antibody (Cat#201, 1:20,000) respectively. Image was developed using FeQ™ ECL Substrate Kit (Cat#226).