

Catalog #: 4890

Aliases

HSPE1; Heat Shock Protein Family E (Hsp10) Member 1; CPN10; EPF; Chaperonin 10; GroES; HSP10; Heat Shock 10kD Protein 1 (Chaperonin 10); 10 KDa Heat Shock Protein, Mitochondrial; Heat Shock Protein Family E Member 1; Heat Shock 10kDa Protein 1; Early-Pregnancy Factor; 10 KDa Chaperonin; Epididymis Secretory Sperm Binding Protein; Early Pregnancy Factor; Hsp10

Background

Gene Name: HSPE1

NCBI Gene Entry: [3336](#)

UniProt Entry: [P61604](#)

Application Information

Molecular Weight: Predicted, 11 kDa; observed, 11 kDa

Clonality: Rabbit monoclonal antibody

Clone ID: 24GB13610

Species Reactivity: Human, mouse, rat

Applications Tested: Western blotting (WB), flow cytometry (FCM)

Immunogen

A synthesized peptide derived from human Cpn10

Isotype

Rabbit IgG

Storage Buffer

Supplied in PBS (pH 7.4) containing 50% glycerol, and 0.02% sodium azide.

Storage

Store at -20 °C for one year.

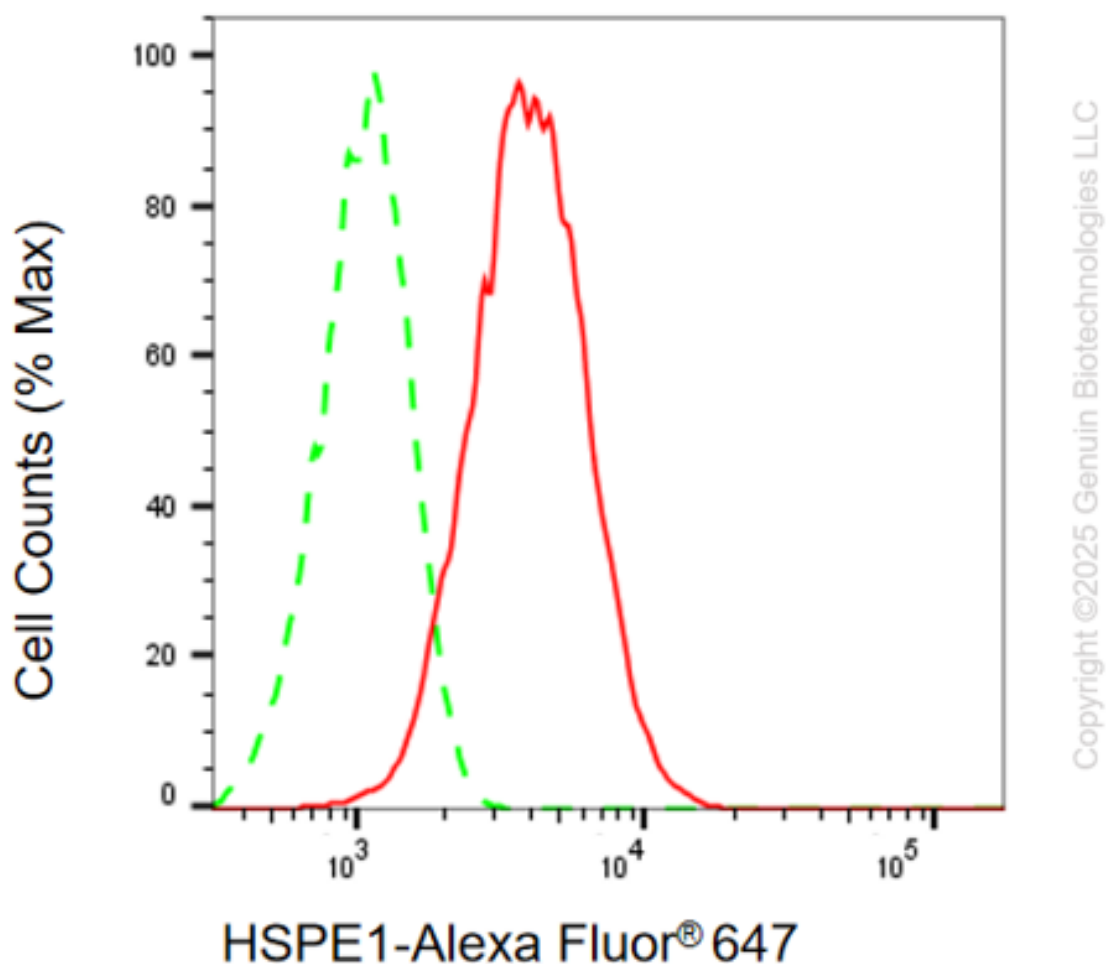
Recommended Dilutions

Western Blotting (WB): 1:1,000-1:5,000

Flow Cytometry (FCM) : 1:2,000

Note: This product is for research use only.

Validation Data



Flow cytometric analysis of HSPE1 expression in HepG2 cells using anti-HSPE1 antibody (Cat#4890, 1:1,000). Green, isotype control; red, HSPE1.

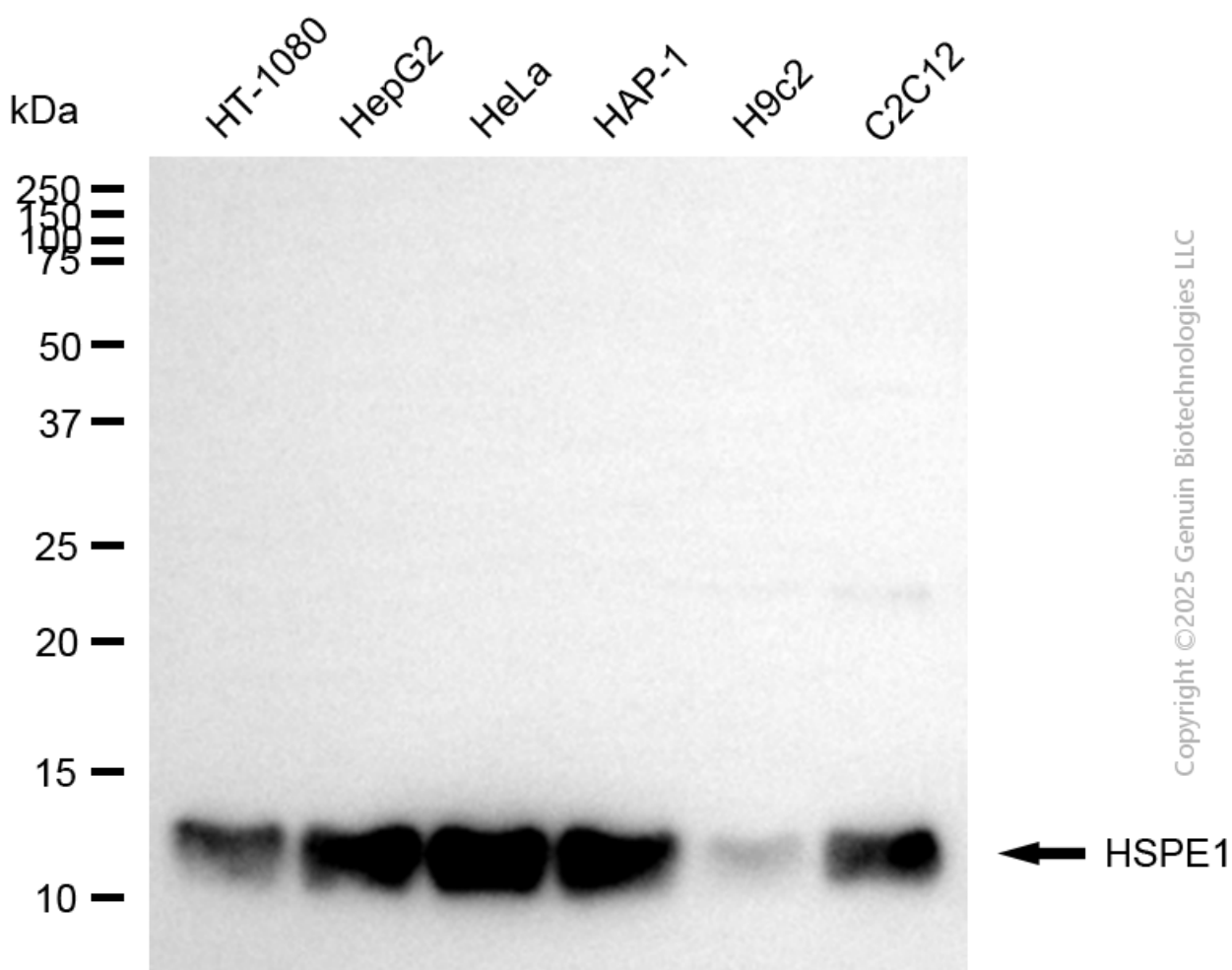
SUPPORT

SUPPORT@GENUINBIOTECH.COM
TEL: +1-540-855-7041

ORDERS

SALES@GENUINBIOTECH.COM
FAX: +1-540-855-7041

WWW.GENUINBIOTECH.COM



Western blotting analysis using anti-HSPE1 antibody (Cat#4890). Total cell lysates (30 μ g) from various cell lines were loaded and separated by SDS-PAGE. The blot was incubated with anti-HSPE1 antibody (Cat#4890, 1:5,000) and HRP-conjugated goat anti-rabbit secondary antibody (Cat#201, 1:20,000) respectively. Image was developed using FeQ™ ECL Substrate Kit (Cat#226).