

Catalog #: 4891

Aliases

DDX21; DExD-Box Helicase 21; Gu-Alpha; Nucleolar RNA Helicase 2; RH-II/GU; GURDB; DEAD/H (Asp-Glu-Ala-Asp/His) Box Polypeptide 21; Nucleolar RNA Helicase Gu; Nucleolar RNA Helicase II; DEAD-Box Helicase 21; DEAD Box Protein 21; RH II/Gu; DEAD (Asp-Glu-Ala-Asp) Box Helicase 21; RNA Helicase II/Gu Alpha; EC 3.6.4.13; Gu Protein; RH-II/GuA; EC 3.6.1 47; II/Gu; GUA; RH

Background

Gene Name: DDX21

NCBI Gene Entry: [9188](#)

UniProt Entry: [Q9NR30](#)

Application Information

Molecular Weight: Predicted, 87 kDa; observed, 87 kDa

Clonality: Rabbit monoclonal antibody

Clone ID: 24GB13615

Species Reactivity: Human, rat

Applications Tested: Western blotting (WB), immunocytochemistry (IC), flow cytometry (FCM)

Immunogen

A synthesized peptide derived from human DDX21

Isotype

Rabbit IgG

Storage Buffer

Supplied in PBS (pH 7.4) containing 50% glycerol, and 0.02% sodium azide.

Storage

Store at -20 °C for one year.

Recommended Dilutions

Western Blotting (WB): 1:1,000-1:5,000

Immunocytochemistry (IC): 1:100-1:1,000

Flow Cytometry (FCM) : 1:2,000

SUPPORT

SUPPORT@GENUINBIOTECH.COM
TEL: +1-540-855-7041

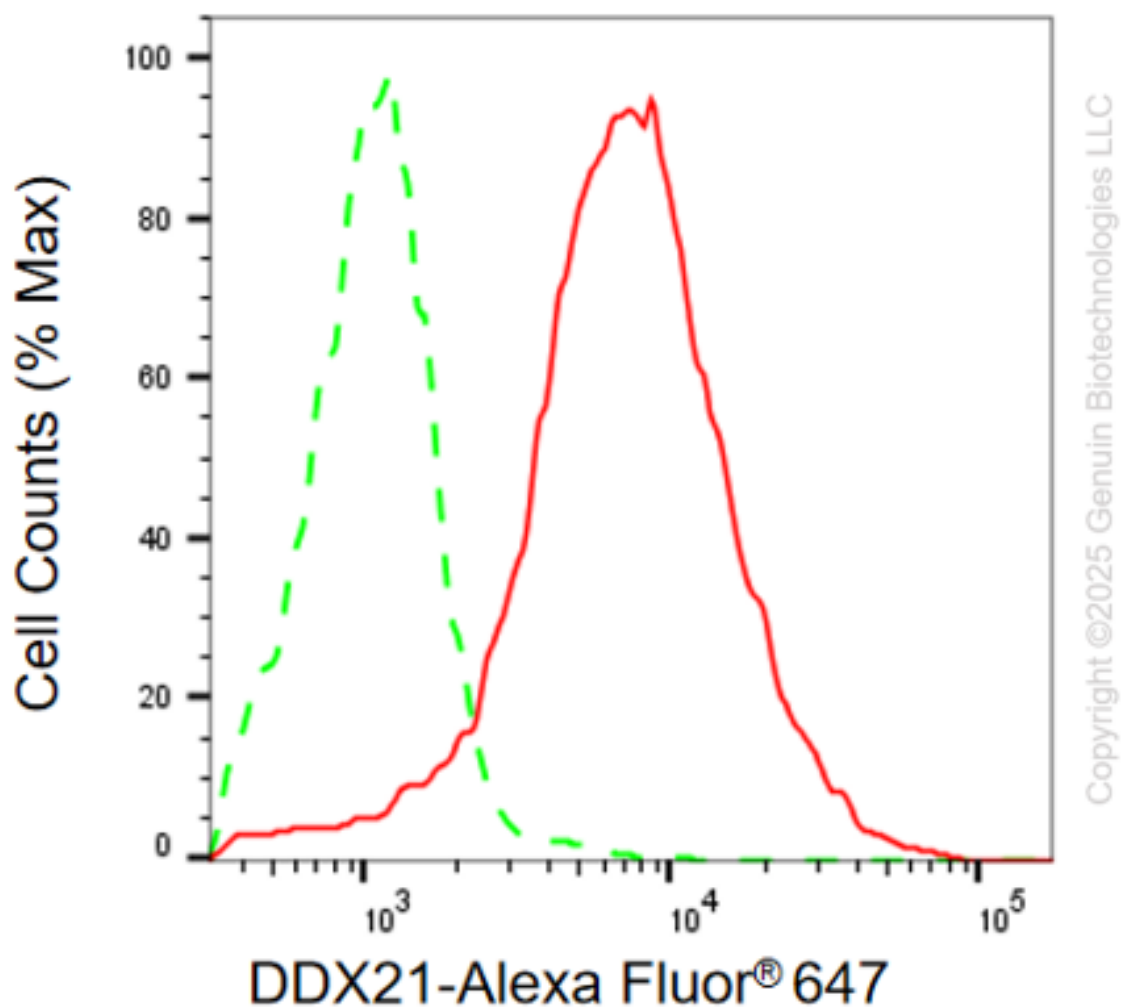
ORDERS

SALES@GENUINBIOTECH.COM
FAX: +1-540-855-7041

WWW.GENUINBIOTECH.COM

Note: This product is for research use only.

Validation Data



Flow cytometric analysis of DDX21 expression in HAP-1 cells using anti-DDX21 antibody (Cat#4891, 1:2,000). Green, isotype control; red, DDX21.

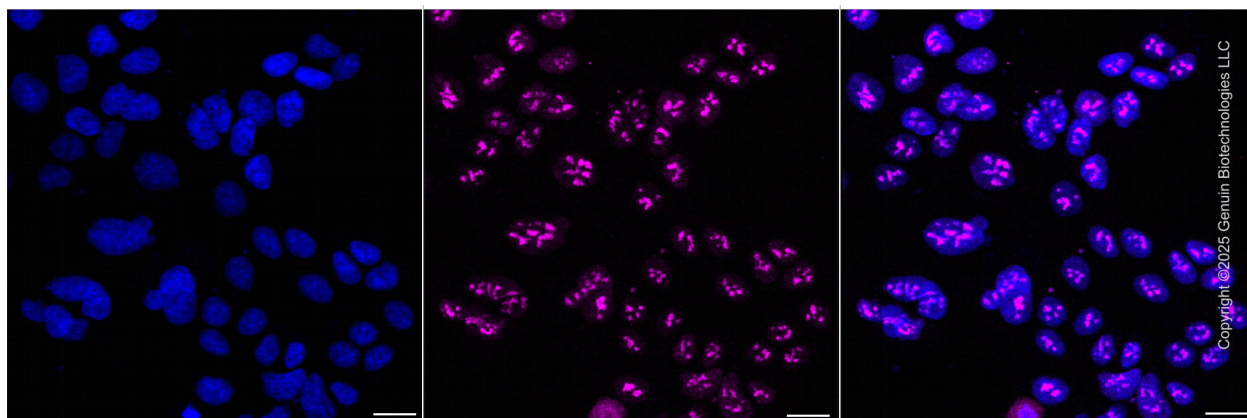
SUPPORT

SUPPORT@GENUINBIOTECH.COM
TEL: +1-540-855-7041

ORDERS

SALES@GENUINBIOTECH.COM
FAX: +1-540-855-7041

WWW.GENUINBIOTECH.COM



Immunocytochemical staining of HAP-1 cells with anti-DDX21 antibody (Cat#4891, 1:1,000) . Nuclei were stained blue with DAPI; DDX21 was stained magenta with Alexa Fluor® 647. Images were taken using Leica stellaris 5. Protein abundance based on laser Intensity and smart gain:Medium . Scale bar, 20 μ m.

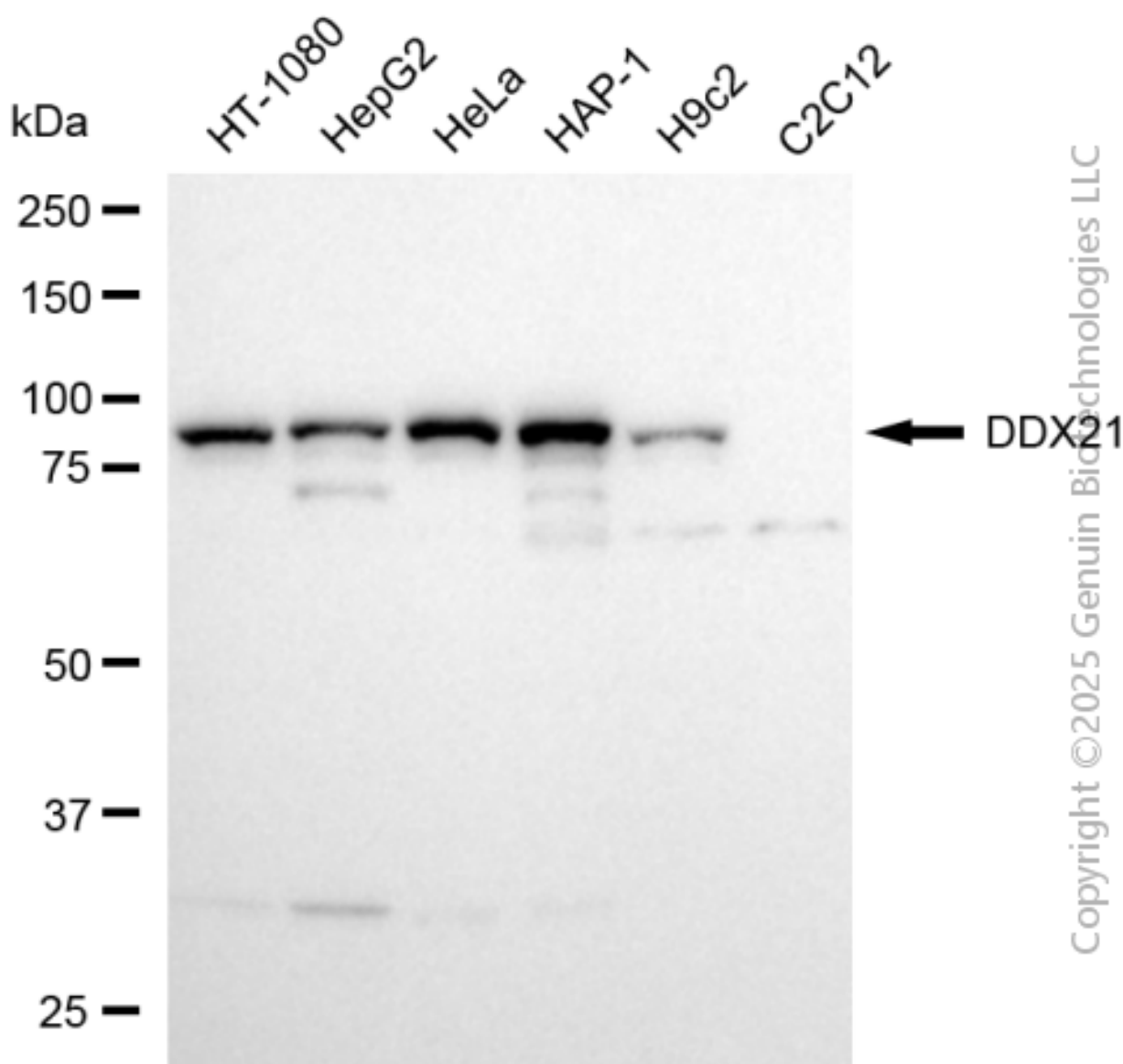
SUPPORT

SUPPORT@GENUINBIOTECH.COM
TEL: +1-540-855-7041

ORDERS

SALES@GENUINBIOTECH.COM
FAX:+1-540-855-7041

WWW.GENUINBIOTECH.COM



Western blotting analysis using anti-DDX21 antibody (Cat#4891). Total cell lysates (30 μ g) from various cell lines were loaded and separated by SDS-PAGE. The blot was incubated with anti-DDX21 antibody (Cat#4891, 1:5,000) and HRP-conjugated goat anti-rabbit secondary antibody (Cat#201, 1:20,000) respectively. Image was developed using NaQ™ ECL Substrate Kit (Cat#716).

SUPPORT

SUPPORT@GENUINBIOTECH.COM
TEL: +1-540-855-7041

ORDERS

SALES@GENUINBIOTECH.COM
FAX: +1-540-855-7041

WWW.GENUINBIOTECH.COM