

Catalog #: 4894

Aliases

GCSAM; Germinal Center Associated Signaling And Motility; HGAL; GCET2; Germinal Center-Associated Signaling And Motility Protein; Germinal Center B-Cell-Expressed Transcript 2 Protein; Germinal Center-Associated Lymphoma Protein; Human Germinal Center-Associated Lymphoma; Germinal Center Expressed Transcript 2; MGC40441; GCAT2; GAL

Background

Gene Name: GCSAM

NCBI Gene Entry: [257144](#)

UniProt Entry: [Q8N6F7](#)

Application Information

Molecular Weight: Predicted, 21 kDa; observed, 21 kDa

Clonality: Rabbit monoclonal antibody

Clone ID: 24GB13630

Species Reactivity: Human

Applications Tested: Western blotting (WB)

Immunogen

Recombinant protein of human GCET2

Isotype

Rabbit IgG

Storage Buffer

Supplied in PBS (pH 7.4) containing 50% glycerol, and 0.02% sodium azide.

Storage

Store at -20 °C for one year.

Recommended Dilutions

Western Blotting (WB): 1:1,000-1:5,000

Note: This product is for research use only.

Validation Data

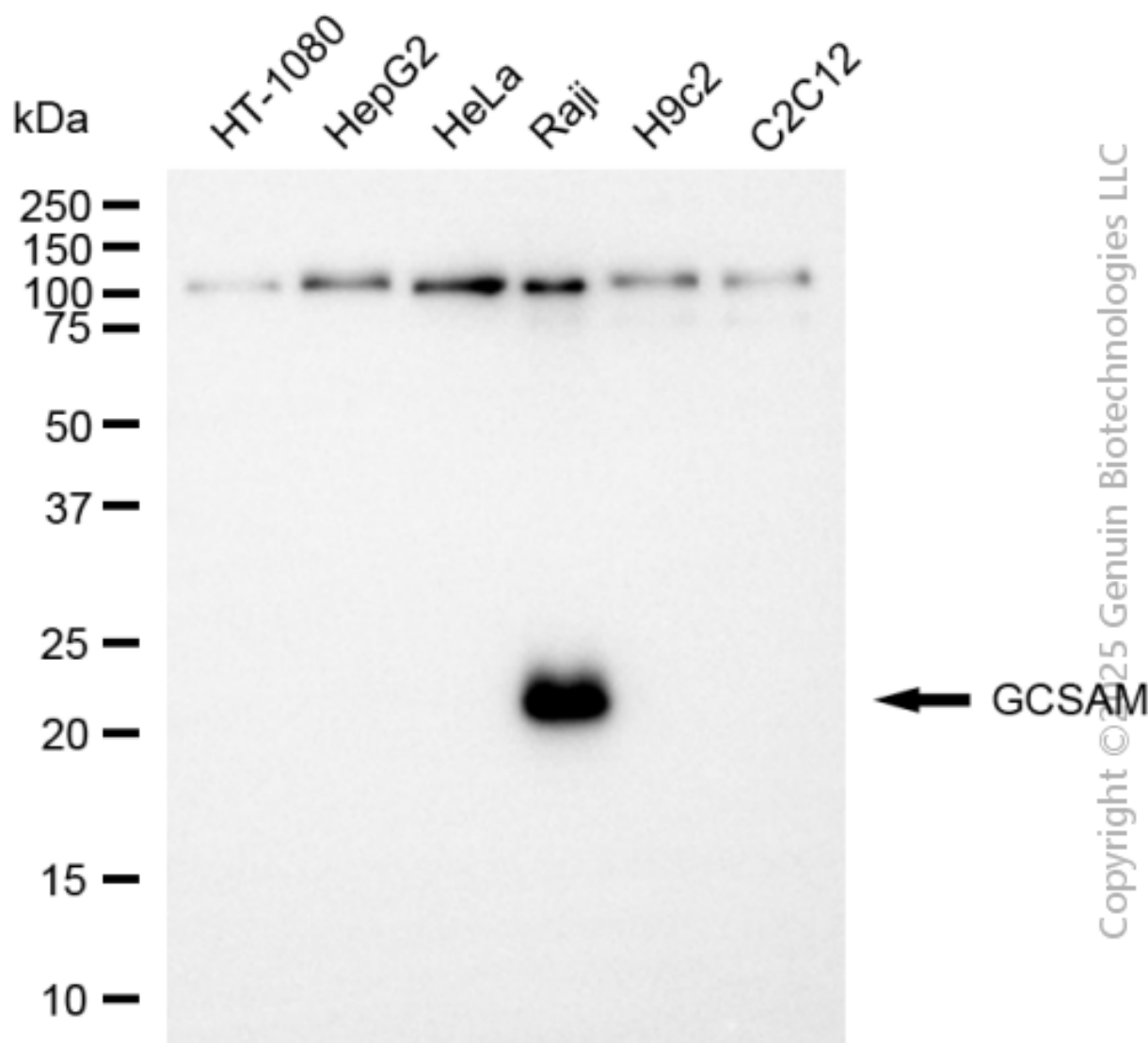
SUPPORT

SUPPORT@GENUINBIOTECH.COM
TEL: +1-540-855-7041

ORDERS

SALES@GENUINBIOTECH.COM
FAX: +1-540-855-7041

WWW.GENUINBIOTECH.COM



Western blotting analysis using anti-GCSAM antibody (Cat#4894). Total cell lysates (30 µg) from various cell lines were loaded and separated by SDS-PAGE. The blot was incubated with anti-GCSAM antibody (Cat#4894, 1:5,000) and HRP-conjugated goat anti-rabbit secondary antibody (Cat#201, 1:20,000) respectively. Image was developed using FeQ™ ECL Substrate Kit (Cat#226).

SUPPORT

SUPPORT@GENUINBIOTECH.COM
TEL: +1-540-855-7041

ORDERS

SALES@GENUINBIOTECH.COM
FAX: +1-540-855-7041

WWW.GENUINBIOTECH.COM