

**Catalog #: 4896**

## Aliases

GSDMD; Gasdermin D; GSDMDC1; DF5L; Gasdermin Domain-Containing Protein 1; Gasdermin Domain Containing 1; Gasdermin-D; FLJ12150; DFNA5L; FKSG10

## Background

Gene Name: GSDMD

NCBI Gene Entry: [79792](#)

UniProt Entry: [P57764](#)

## Application Information

Molecular Weight: Predicted, 53 kDa; observed, 50 kDa

Clonality: Rabbit monoclonal antibody

Clone ID: 24GB13640

Species Reactivity: Human

Applications Tested: Western blotting (WB), flow cytometry (FCM), immunohistochemistry (IHC)

## Immunogen

Recombinant protein of human GSDMD

## Isotype

Rabbit IgG

## Storage Buffer

Supplied in PBS (pH 7.4) containing 50% glycerol, and 0.02% sodium azide.

## Storage

Store at -20 °C for one year.

## Recommended Dilutions

Western Blotting (WB): 1:500-1:2,500

Immunohistochemistry (IHC): 1:50-1:100

**Note:** This product is for research use only.

## Validation Data

---

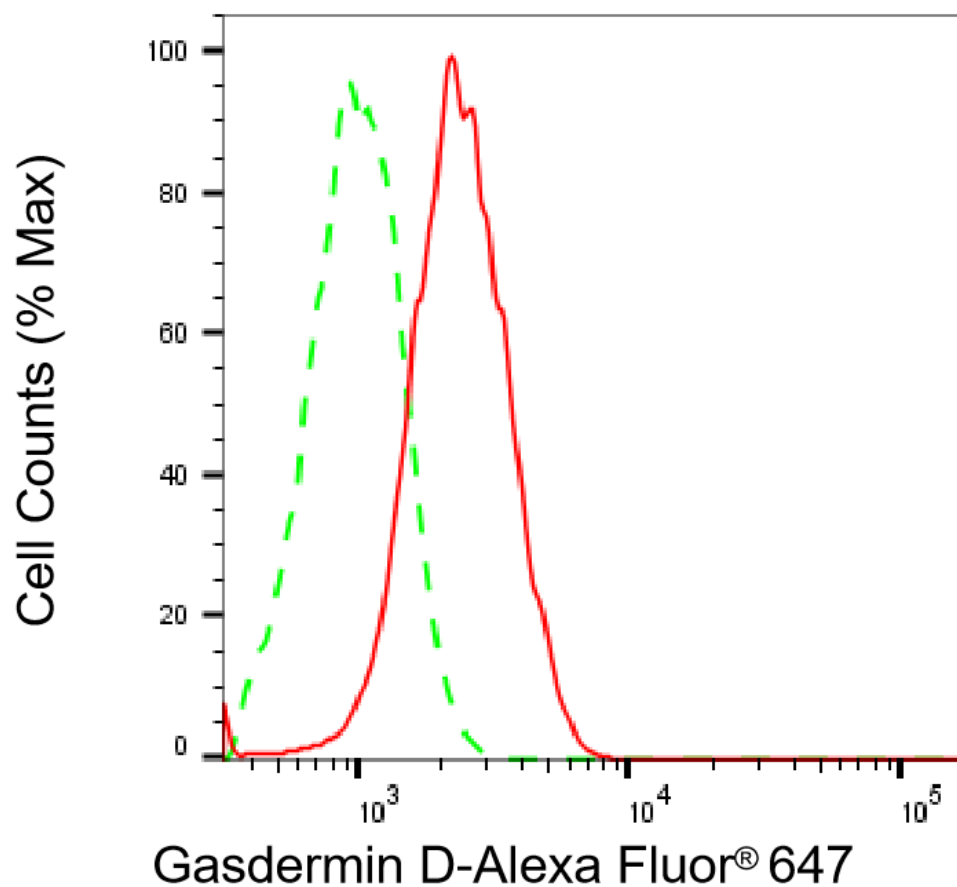
### SUPPORT

SUPPORT@GENUINBIOTECH.COM  
TEL: +1-540-855-7041

### ORDERS

SALES@GENUINBIOTECH.COM  
FAX: +1-540-855-7041

[WWW.GENUINBIOTECH.COM](http://WWW.GENUINBIOTECH.COM)



Copyright ©2025 Genuin Biotechnologies LLC

Flow cytometric analysis of Gasdermin D expression in HT-1080 cells using anti-Gasdermin D antibody (Cat#4896, 1:2,000). Green, isotype control; red, Gasdermin D.

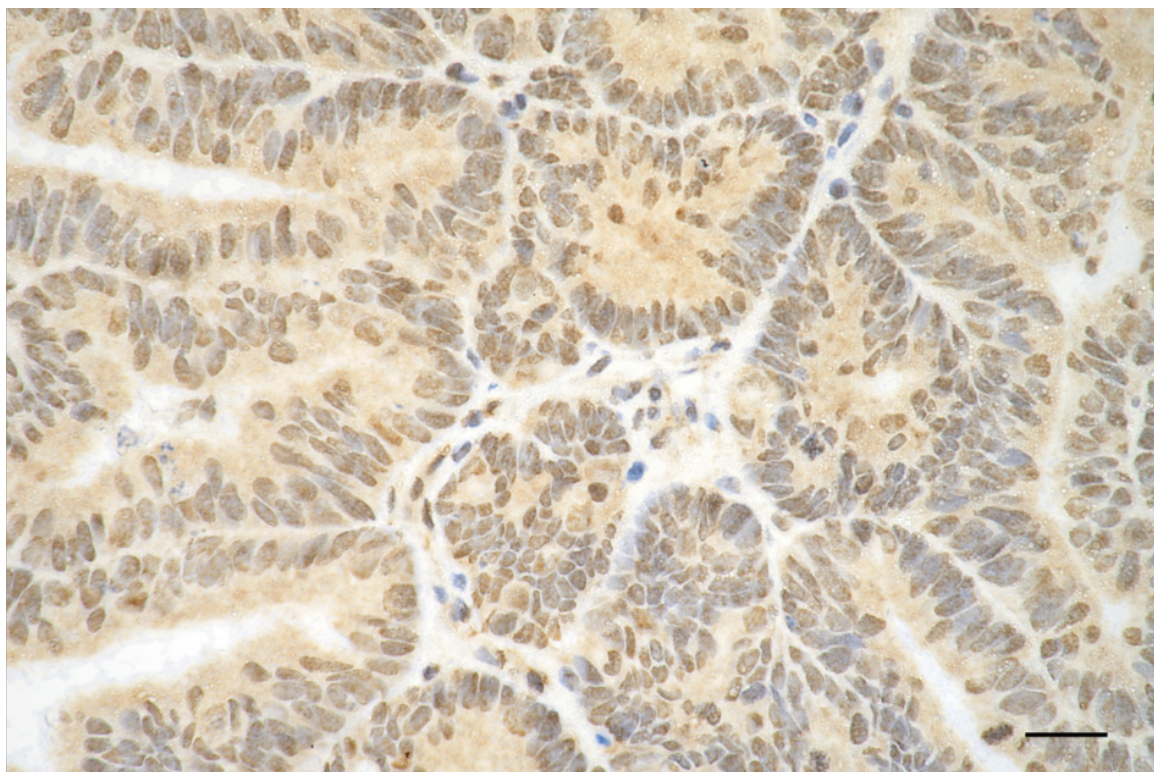
**SUPPORT**

SUPPORT@GENUINBIOTECH.COM  
TEL: +1-540-855-7041

**ORDERS**

SALES@GENUINBIOTECH.COM  
FAX: +1-540-855-7041

**WWW.GENUINBIOTECH.COM**



Copyright ©2025 Genuin Biotechnologies LLC

Immunohistochemistry was performed on paraffin-embedded human endometrial carcinoma using anti-gasdermin D antibody (Cat#4896, 1:100). Antigen retrieval was done in sodium citrate buffer (pH 6.0). DAB was used for detection, with hematoxylin counterstaining. Images were acquired using a Nikon Ci-L Plus microscope (40× objective). Scale bar: 25  $\mu$ m.

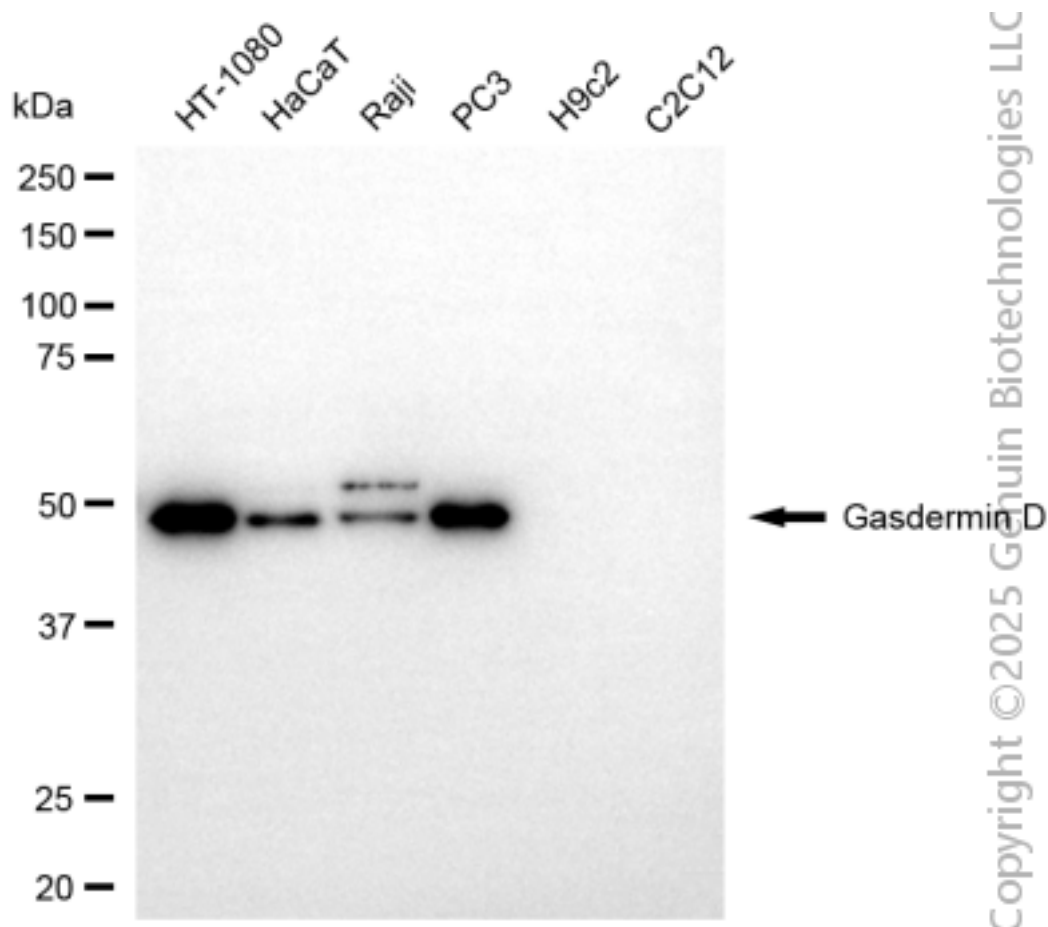
**SUPPORT**

SUPPORT@GENUINBIOTECH.COM  
TEL: +1-540-855-7041

**ORDERS**

SALES@GENUINBIOTECH.COM  
FAX: +1-540-855-7041

**WWW.GENUINBIOTECH.COM**



Western blotting analysis using anti-gasdermin D antibody (Cat#4896). Total cell lysates (30  $\mu$ g) from various cell lines were loaded and separated by SDS-PAGE. The blot was incubated with anti-gasdermin D antibody (Cat#4896, 1:2,500) and HRP-conjugated goat anti-rabbit secondary antibody (Cat#201, 1:20,000) respectively. Image was developed using FeQ™ ECL Substrate Kit (Cat#226).

**SUPPORT**

SUPPORT@GENUINBIOTECH.COM  
TEL: +1-540-855-7041

**ORDERS**

SALES@GENUINBIOTECH.COM  
FAX: +1-540-855-7041

[WWW.GENUINBIOTECH.COM](http://WWW.GENUINBIOTECH.COM)