

## Catalog #: 4906

## Aliases

NDUFAF5; NADH:Ubiquinone Oxidoreductase Complex Assembly Factor 5; DJ842G6.1; C20orf7; NADH Dehydrogenase [Ubiquinone] 1 Alpha Subcomplex Assembly Factor 5; NADH Dehydrogenase (Ubiquinone) Complex I, Assembly Factor 5; Arginine-Hydroxylase NDUFAF5, Mitochondrial; Putative Methyltransferase NDUFAF5; Probable Methyltransferase C20orf7, Mitochondrial; Chromosome 20 Open Reading Frame 7; BA526K24.2; EC 1.-.-.- ; EC 2.1.1.- ; MC1DN16

## Background

Gene Name: NDUFAF5

NCBI Gene Entry: [79133](#)

UniProt Entry: [Q5TEU4](#)

## Application Information

Molecular Weight: Predicted, 39 kDa; observed, 39 kDa

Clonality: Rabbit monoclonal antibody

Clone ID: 24GB13690

Species Reactivity: Human, mouse

Applications Tested: Western blotting (WB), immunocytochemistry (IC), flow cytometry (FCM)

## Immunogen

Recombinant protein of human NDUFAF5

## Isotype

Rabbit IgG

## Storage Buffer

Supplied in PBS (pH 7.4) containing 50% glycerol, and 0.02% sodium azide.

## Storage

Store at -20 °C for one year.

## Recommended Dilutions

Western Blotting (WB): 1:1,000-1:5,000

Immunocytochemistry (IC): 1:100-1:1,000

Flow Cytometry (FCM) : 1:2,000

---

### SUPPORT

SUPPORT@GENUINBIOTECH.COM  
TEL: +1-540-855-7041

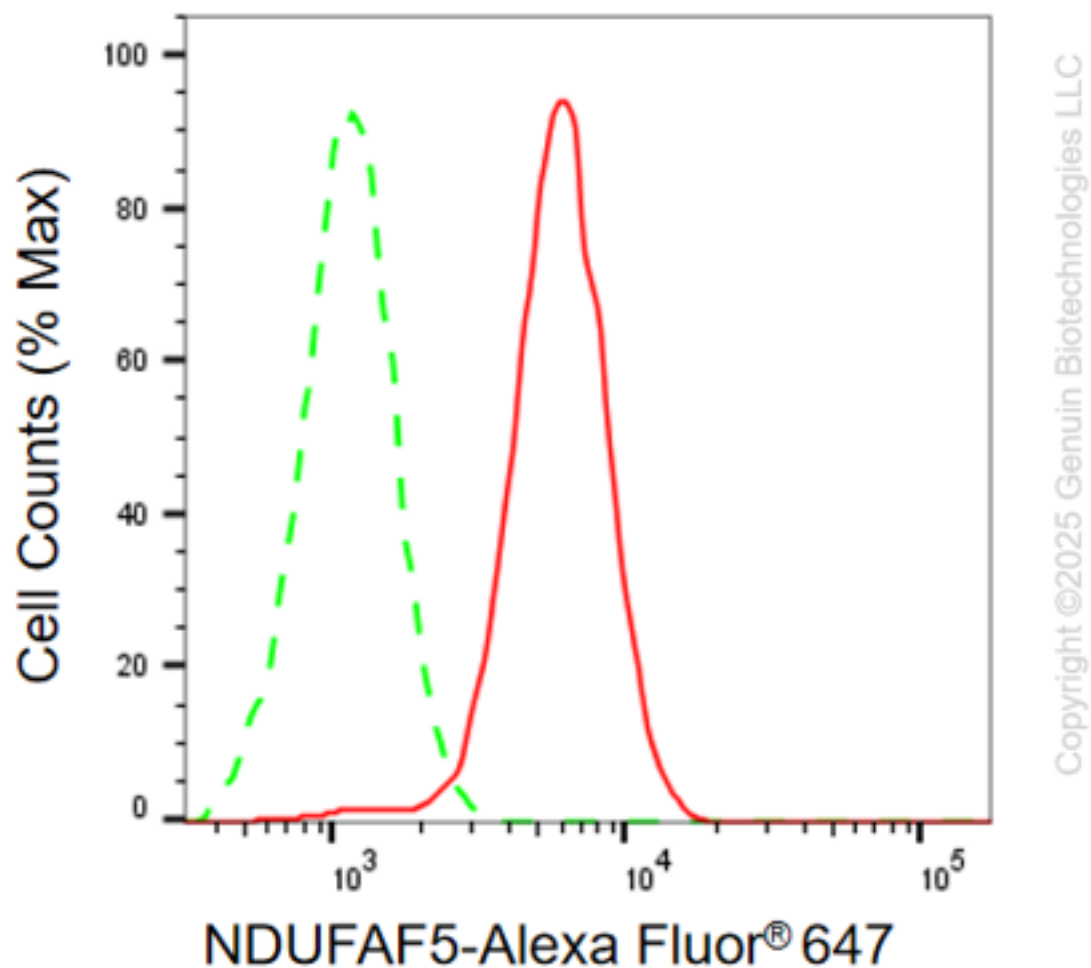
### ORDERS

SALES@GENUINBIOTECH.COM  
FAX: +1-540-855-7041

### WWW.GENUINBIOTECH.COM

**Note:** This product is for research use only.

## Validation Data



Flow cytometric analysis of NDUFAF5 expression in C2C12 cells using anti-NDUFAF5 antibody (Cat#4906, 1:1,000). Green, isotype control; red, NDUFAF5.

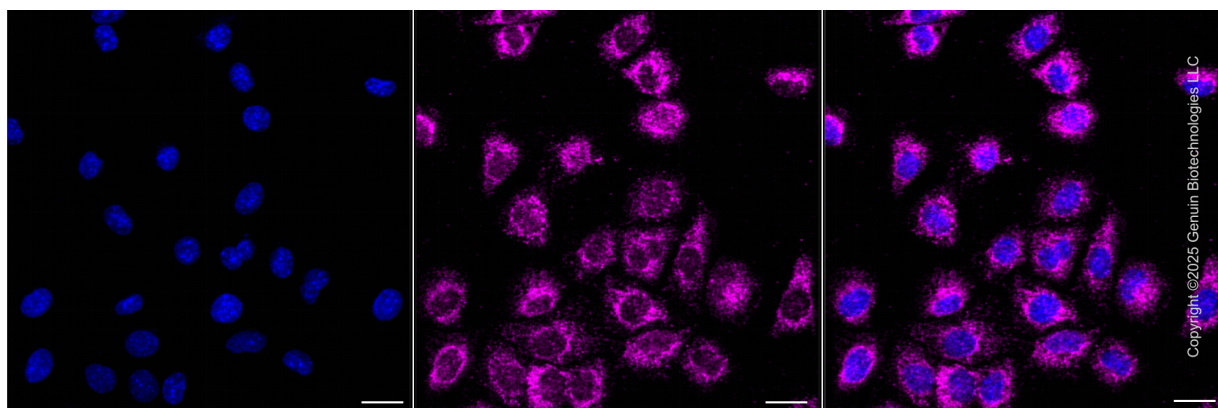
### SUPPORT

SUPPORT@GENUINBIOTECH.COM  
TEL: +1-540-855-7041

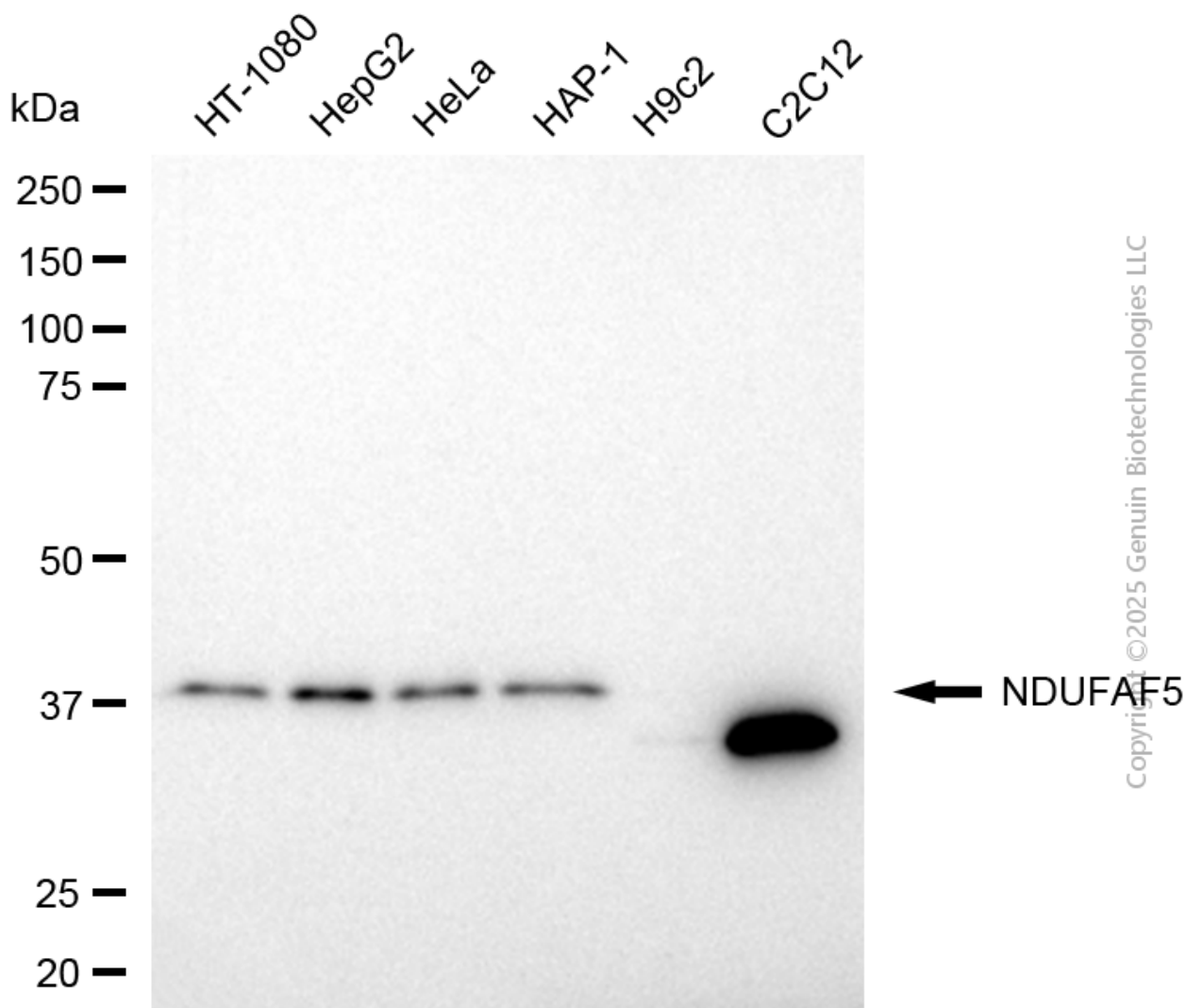
### ORDERS

SALES@GENUINBIOTECH.COM  
FAX: +1-540-855-7041

[WWW.GENUINBIOTECH.COM](http://WWW.GENUINBIOTECH.COM)



Immunocytochemical staining of C2C12 cells with anti-NDUFAF5 antibody (Cat#4906, 1:1,000) . Nuclei were stained blue with DAPI; NDUFAF5 was stained magenta with Alexa Fluor® 647. Images were taken using Leica stellaris 5. Protein abundance based on laser Intensity and smart gain: Medium. Scale bar, 20  $\mu$ m.

**SUPPORT**

SUPPORT@GENUINBIOTECH.COM  
TEL: +1-540-855-7041

**ORDERS**

SALES@GENUINBIOTECH.COM  
FAX: +1-540-855-7041

[WWW.GENUINBIOTECH.COM](http://WWW.GENUINBIOTECH.COM)

Western blotting analysis using anti-NDUFAF5 antibody (Cat#4906). Total cell lysates (30 µg) from various cell lines were loaded and separated by SDS-PAGE. The blot was incubated with anti-NDUFAF5 antibody (Cat#4906, 1:5,000) and HRP-conjugated goat anti-rabbit secondary antibody (Cat#201, 1:20,000) respectively. Image was developed using FeQ™ ECL Substrate Kit (Cat#226).