

Catalog #: 4909

Aliases

PCSK9; Proprotein Convertase Subtilisin/Kexin Type 9; NARC-1; FH3; Subtilisin/Kexin-Like Protease PC9; HCHOLA3; NARC1; PC9; Convertase Subtilisin/Kexin Type 9 Preproprotein; Hypercholesterolemia, Autosomal Dominant 3; Neural Apoptosis Regulated Convertase 1; Neural Apoptosis-Regulated Convertase 1; Proprotein Convertase 9; EC 3.4.21.111; EC 3.4.21.-; EC 3.4.21; LDLCQ1; FHCL3

Background

Gene Name: PCSK9

NCBI Gene Entry: [255738](#)

UniProt Entry: [Q8NBP7](#)

Application Information

Molecular Weight: Predicted, 74 kDa; observed, 62;74 kDa

Clonality: Rabbit monoclonal antibody

Clone ID: 24GB13705

Species Reactivity: Human

Applications Tested: Western blotting (WB), immunocytochemistry (IC), flow cytometry (FCM)

Immunogen

A synthesized peptide derived from human PCSK9

Isotype

Rabbit IgG

Storage Buffer

Supplied in PBS (pH 7.4) containing 50% glycerol, and 0.02% sodium azide.

Storage

Store at -20 °C for one year.

Recommended Dilutions

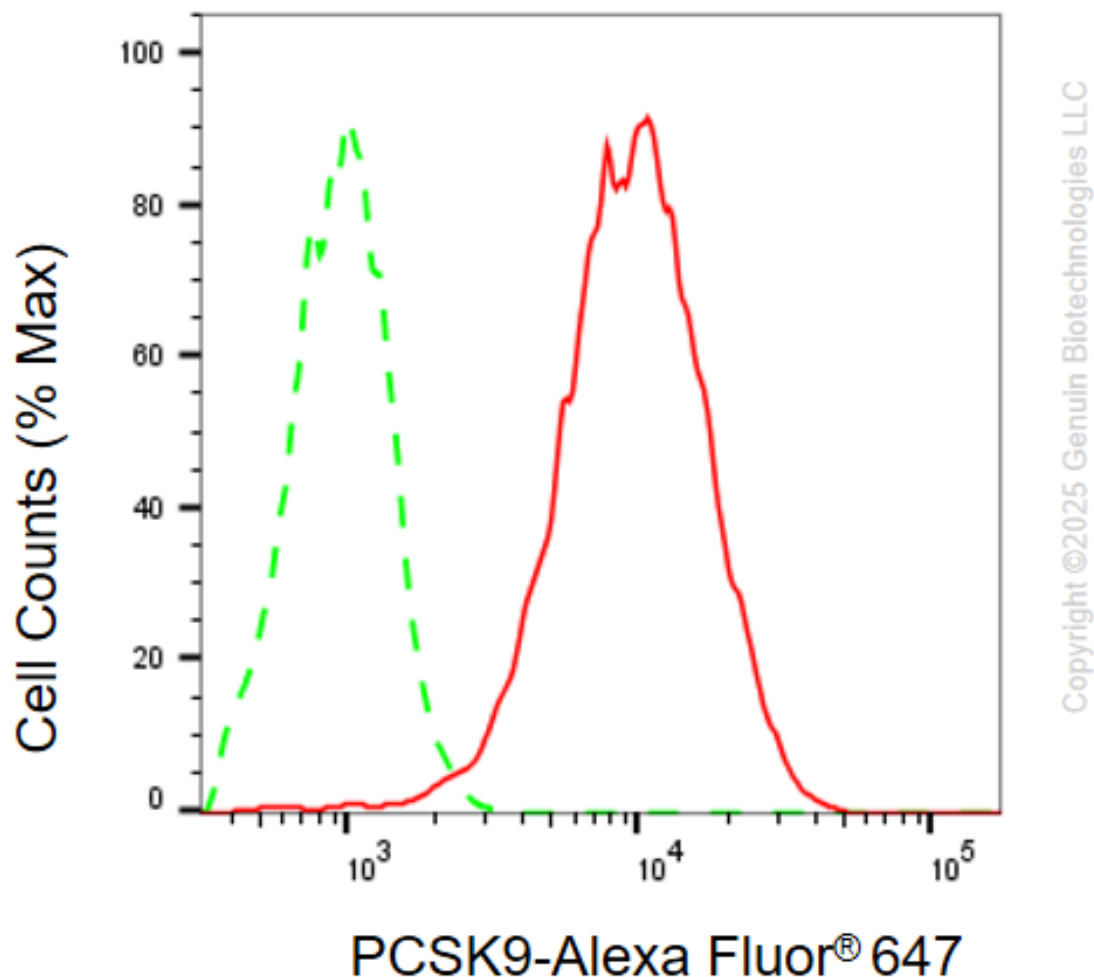
Western Blotting (WB): 1:1,000-1:5,000

Immunohistochemistry (IHC): 1:100-1:1,000

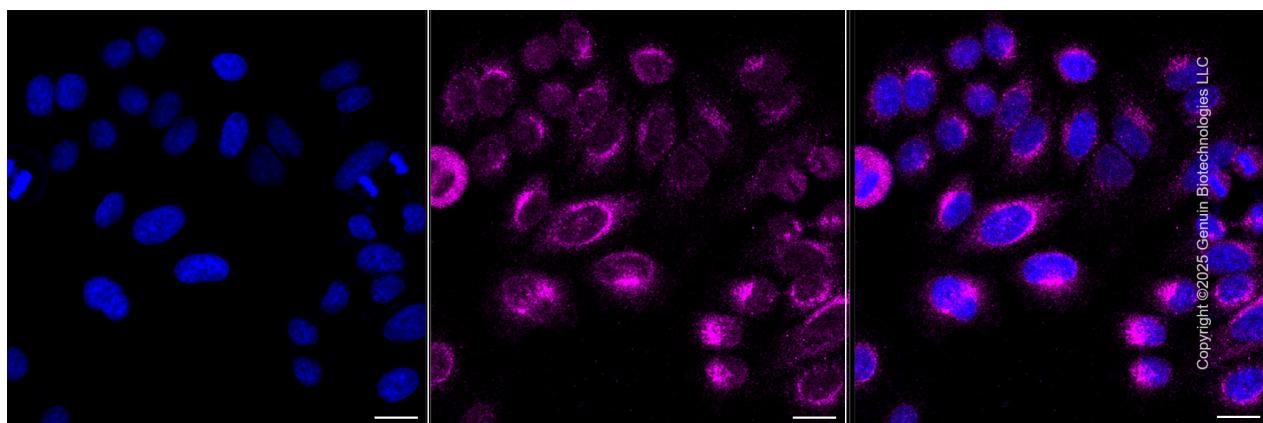
Flow Cytometry (FCM) : 1:2,000

Note: This product is for research use only.

Validation Data



Flow cytometric analysis of PCSK9 expression in HepG2 cells using anti-PCSK9 antibody (Cat#4909, 1:2,000). Green, isotype control; red, PCSK9.



SUPPORT

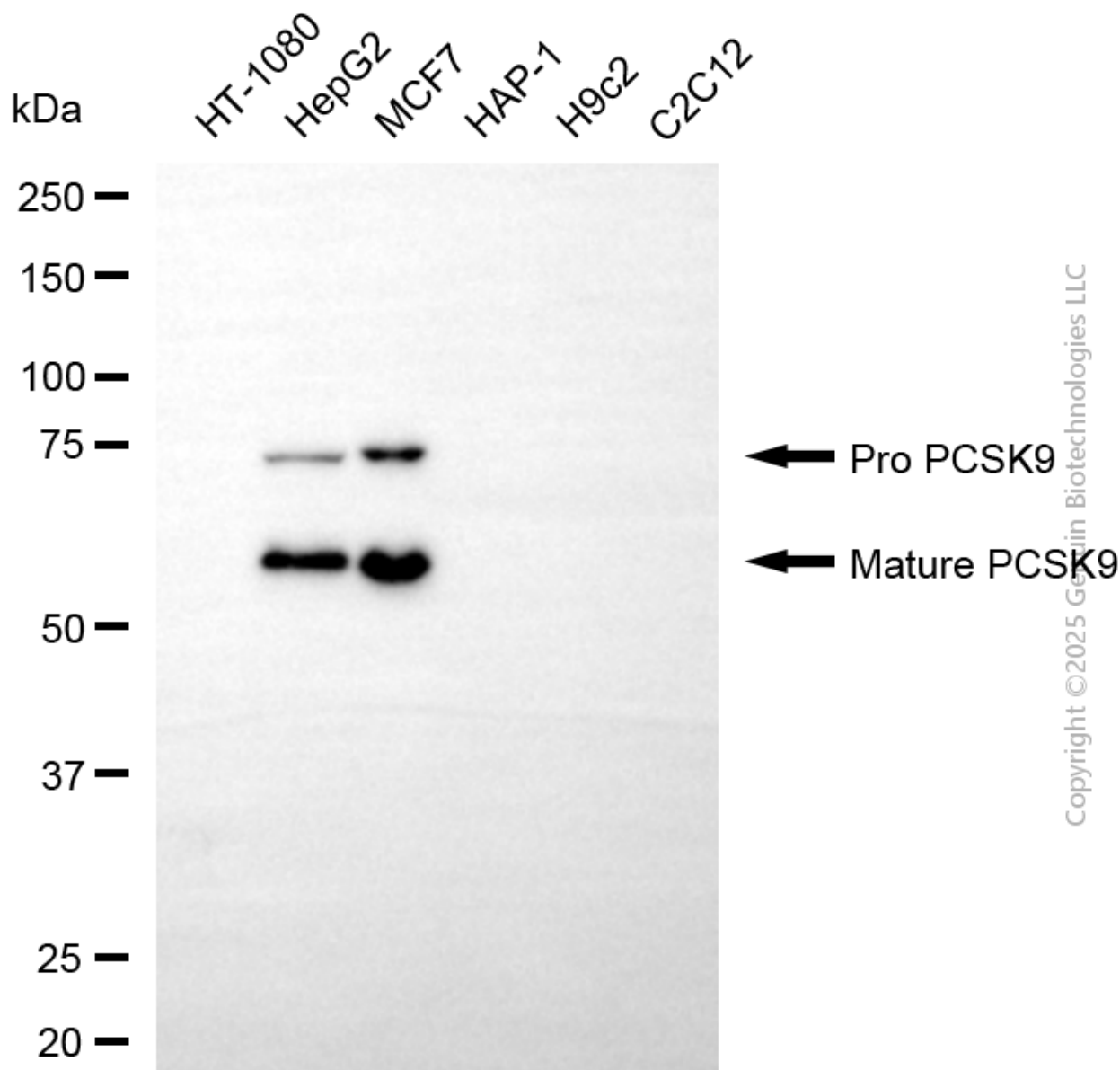
SUPPORT@GENUINBIOTECH.COM
TEL: +1-540-855-7041

ORDERS

SALES@GENUINBIOTECH.COM
FAX: +1-540-855-7041

WWW.GENUINBIOTECH.COM

Immunocytochemical staining of HepG2 cells with anti-PCSK9 antibody (Cat#4909, 1:1,000) . Nuclei were stained blue with DAPI; PCSK9 was stained magenta with Alexa Fluor® 647. Images were taken using Leica stellaris 5. Protein abundance based on laser Intensity and smart gain: Medium. Scale bar, 20 μ m.



Western blotting analysis using anti-PCSK9 antibody (Cat#4909). Total cell lysates (30 μ g) from various cell lines were loaded and separated by SDS-PAGE. The blot was incubated with anti-PCSK9 antibody (Cat#4909, 1:5,000) and HRP-conjugated goat anti-rabbit secondary antibody (Cat#201, 1:20,000) respectively. Image was developed using NaQ™ ECL Substrate Kit (Cat#716).