

## Catalog #: 4912

## Aliases

REEP2; Receptor Accessory Protein 2; SGC32445; C5orf19; SPG72; Yip2d; Receptor Expression-Enhancing Protein 2; Chromosome 5 Open Reading Frame 19; SPG72A; SPG72B

## Background

Gene Name: REEP2

NCBI Gene Entry: [51308](#)

UniProt Entry: [Q9BRK0](#)

## Application Information

Molecular Weight: Predicted, 28 kDa; observed, 28 kDa

Clonality: Rabbit monoclonal antibody

Clone ID: 24GB13720

Species Reactivity: Human, rat

Applications Tested: Western blotting (WB), flow cytometry (FCM)

## Immunogen

A synthesized peptide derived from human REEP2

## Isotype

Rabbit IgG

## Storage Buffer

Supplied in PBS (pH 7.4) containing 50% glycerol, and 0.02% sodium azide.

## Storage

Store at -20 °C for one year.

## Recommended Dilutions

Western Blotting (WB): 1:1,000-1:5,000

Flow Cytometry (FCM) : 1:2,000

**Note:** This product is for research use only.

## Validation Data

---

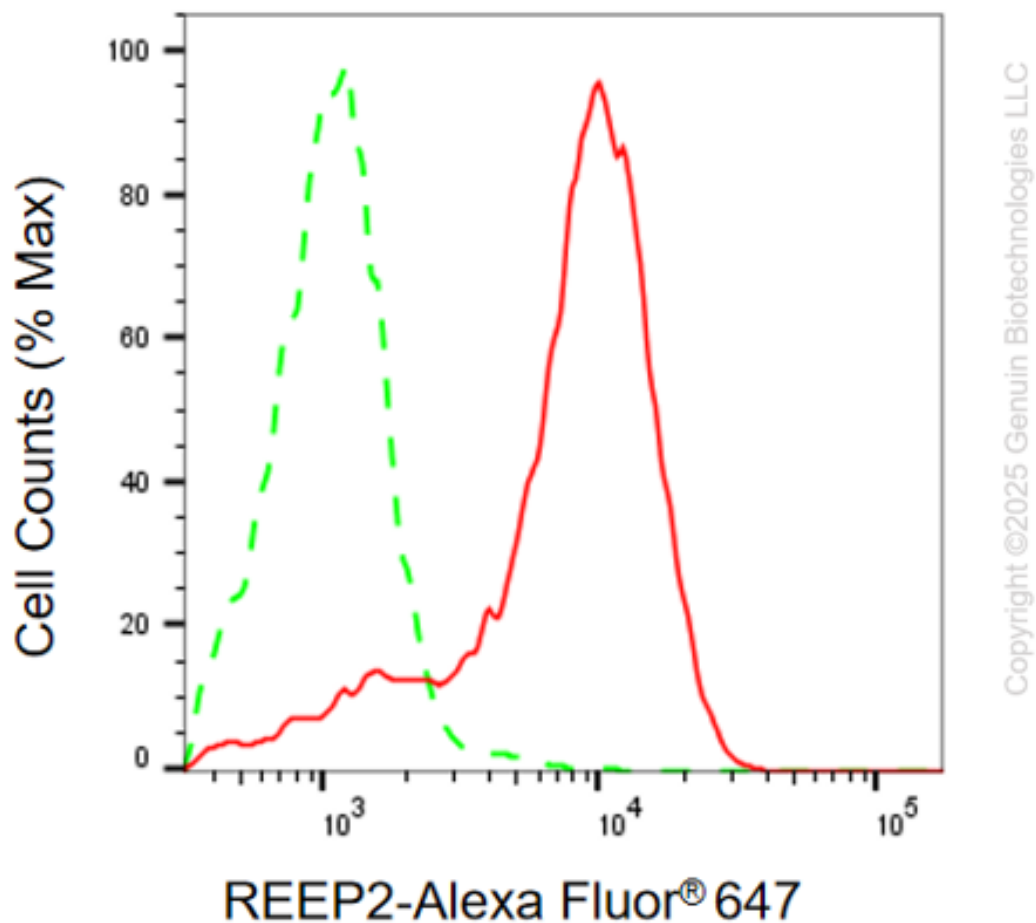
### SUPPORT

SUPPORT@GENUINBIOTECH.COM  
TEL: +1-540-855-7041

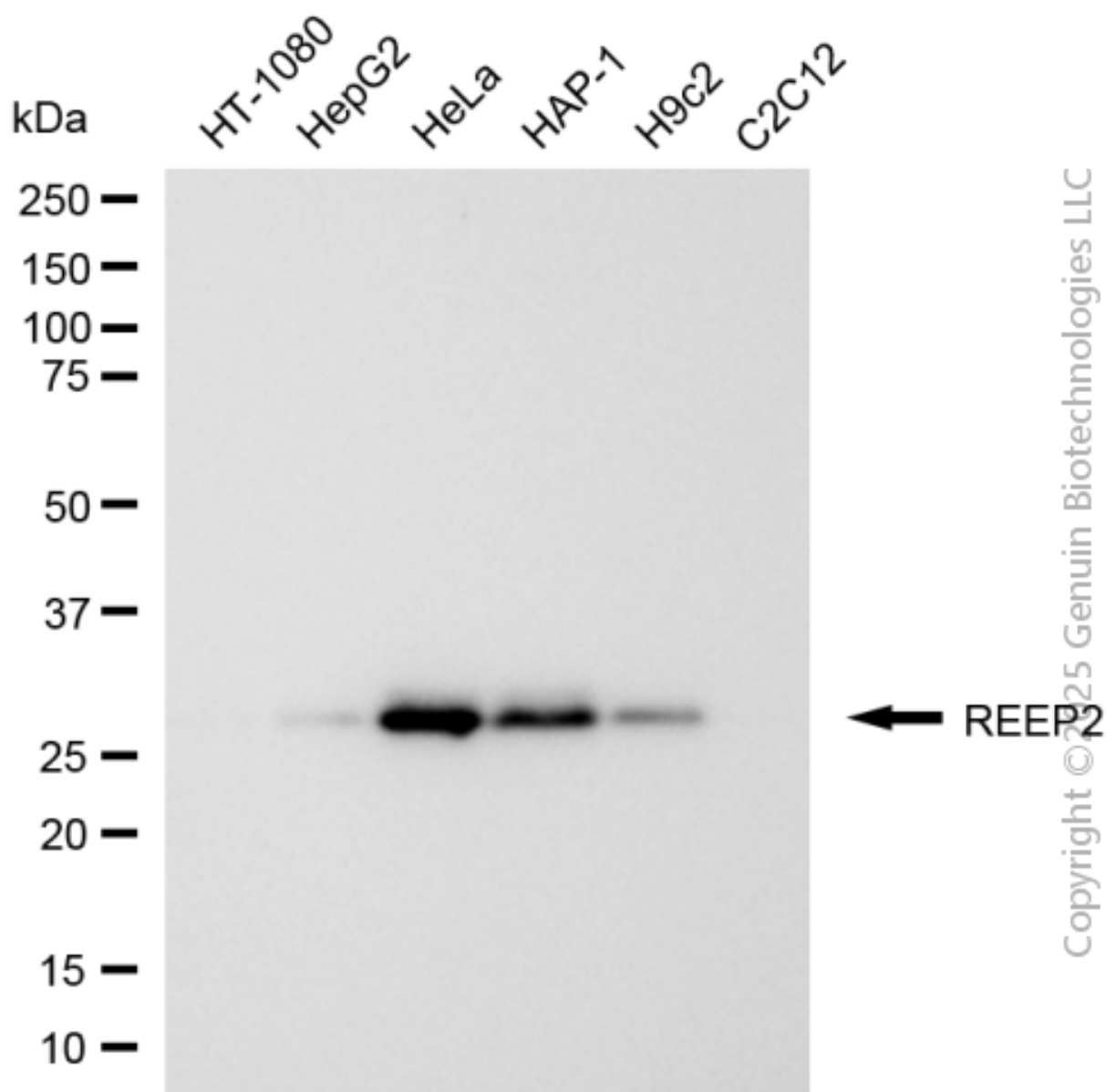
### ORDERS

SALES@GENUINBIOTECH.COM  
FAX: +1-540-855-7041

[WWW.GENUINBIOTECH.COM](http://WWW.GENUINBIOTECH.COM)



Flow cytometric analysis of REEP2 expression in HAP-1 cells using anti-REEP2 antibody (Cat#4912, 1:2,000). Green, isotype control; red, REEP2.



Western blotting analysis using anti-REEP2 antibody (Cat#4912). Total cell lysates (30  $\mu$ g) from various cell lines were loaded and separated by SDS-PAGE. The blot was incubated with anti-REEP2 antibody (Cat#4912, 1:5,000) and HRP-conjugated goat anti-rabbit secondary antibody (Cat#201, 1:20,000) respectively. Image was developed using FeQ™ ECL Substrate Kit (Cat#226).

**SUPPORT**

SUPPORT@GENUINBIOTECH.COM  
TEL: +1-540-855-7041

**ORDERS**

SALES@GENUINBIOTECH.COM  
FAX: +1-540-855-7041

[WWW.GENUINBIOTECH.COM](http://WWW.GENUINBIOTECH.COM)