

Catalog #: 4916

Aliases

MYDGF; Myeloid Derived Growth Factor; R33729_1; C19orf10; IL25; SF20; Interleukin 27
Working Designation; Myeloid-Derived Growth Factor; IL-25; IL-27; IL27w; IL27; Stromal Cell-
Derived Growth Factor SF20; Chromosome 19 Open Reading Frame 10; UPF0556 Protein
C19orf10; EUROIMAGE1875335; Interleukin-25

Background

Gene Name: MYDGF

NCBI Gene Entry: [56005](#)

UniProt Entry: [Q969H8](#)

Application Information

Molecular Weight: Predicted, 19 kDa; observed, 17 kDa

Clonality: Rabbit monoclonal antibody

Clone ID: 24GB13740

Species Reactivity: Human

Applications Tested: Western blotting (WB), immunocytochemistry (IC), flow cytometry (FCM)

Immunogen

Recombinant protein of human SF20

Isotype

Rabbit IgG

Storage Buffer

Supplied in PBS (pH 7.4) containing 50% glycerol, and 0.02% sodium azide.

Storage

Store at -20 °C for one year.

Recommended Dilutions

Western Blotting (WB): 1:1,000-1:5,000

Immunohistochemistry (IHC): 1:100-1:1,000

Flow Cytometry (FCM) : 1:2,000

SUPPORT

SUPPORT@GENUINBIOTECH.COM
TEL: +1-540-855-7041

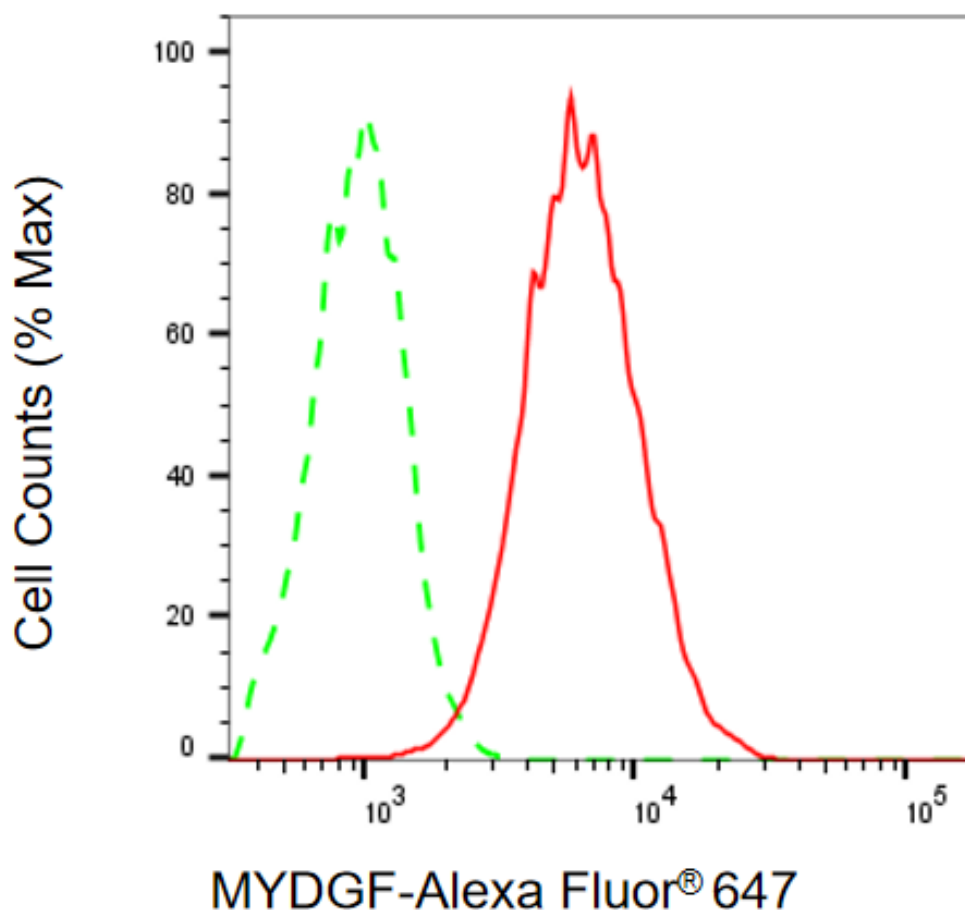
ORDERS

SALES@GENUINBIOTECH.COM
FAX: +1-540-855-7041

WWW.GENUINBIOTECH.COM

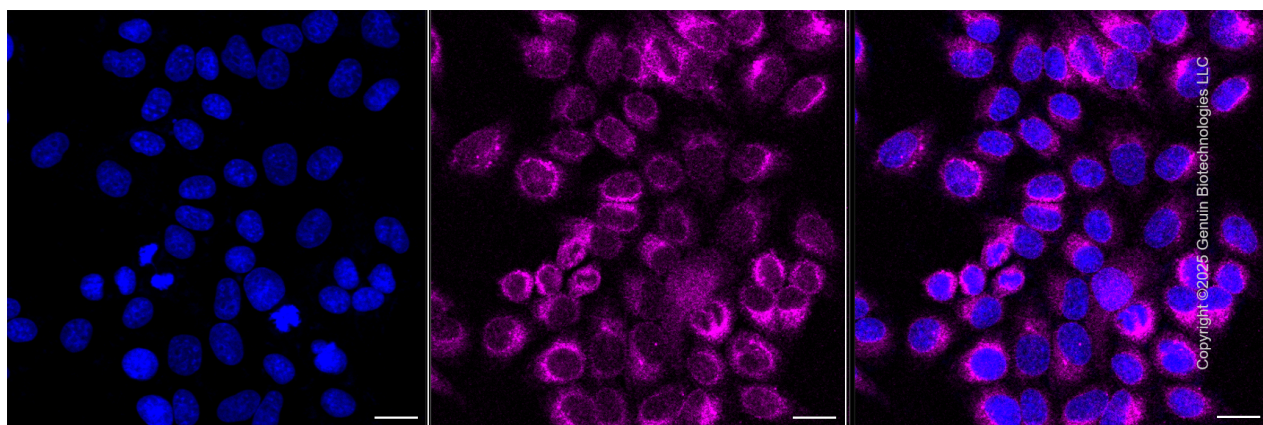
Note: This product is for research use only.

Validation Data



Copyright ©2025 Genuin Biotechnologies LLC

Flow cytometric analysis of MYDGF expression in HepG2 cells using anti-MYDGF antibody (Cat#4916, 1:2,000). Green, isotype control; red, MYDGF.



Copyright ©2025 Genuin Biotechnologies LLC

SUPPORT

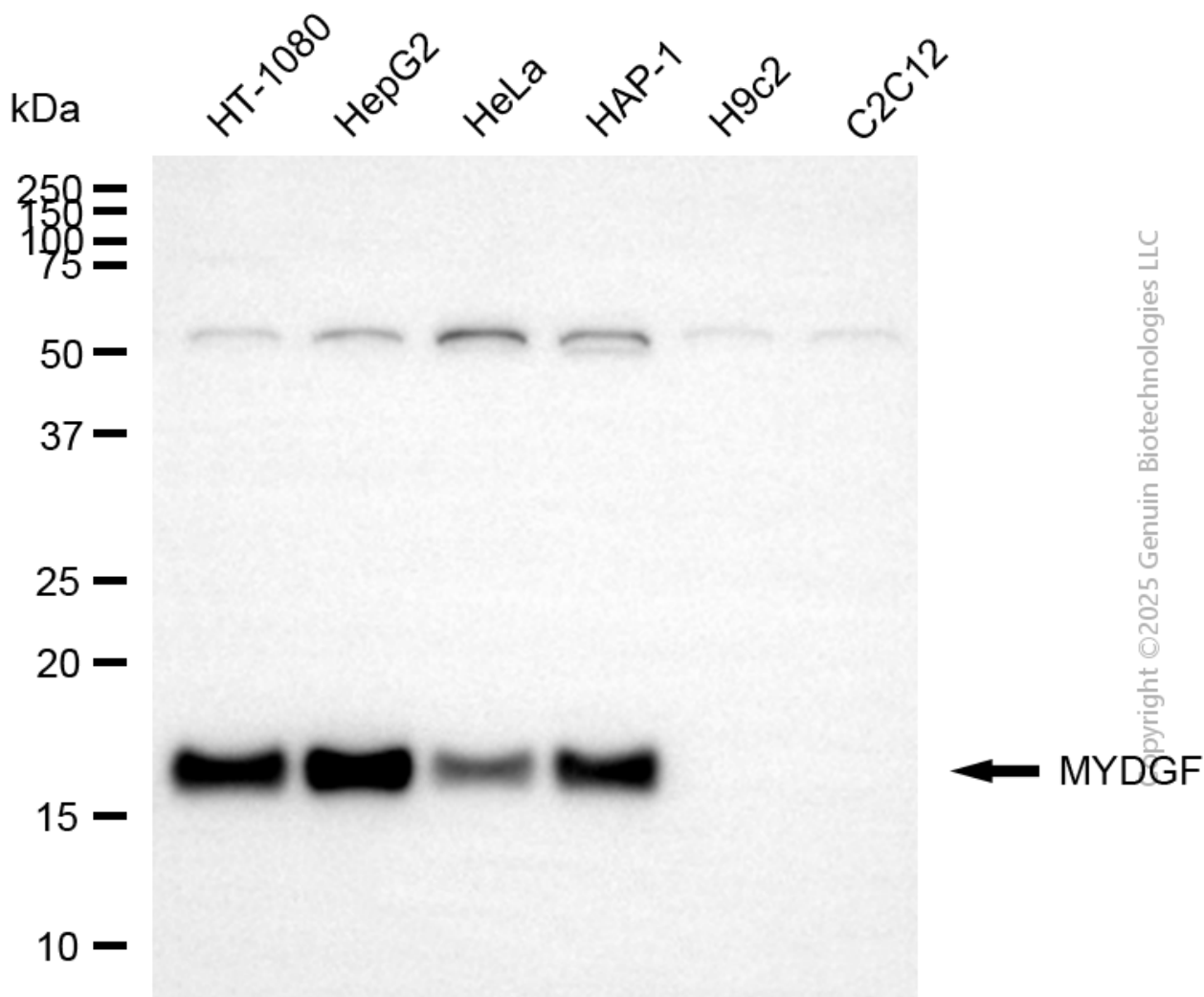
SUPPORT@GENUINBIOTECH.COM
TEL: +1-540-855-7041

ORDERS

SALES@GENUINBIOTECH.COM
FAX: +1-540-855-7041

WWW.GENUINBIOTECH.COM

Immunocytochemical staining of HepG2 cells with anti-MYDGF antibody (Cat#4916, 1:1000). Nuclei were stained blue with DAPI; MYDGF was stained magenta with Alexa Fluor® 647. Images were taken using Leica stellaris 5. Protein abundance based on laser Intensity and smart gain: Medium. Scale bar, 20 µm.



Western blotting analysis using anti-MYDGF antibody (Cat#4916). Total cell lysates (30 µg) from various cell lines were loaded and separated by SDS-PAGE. The blot was incubated with anti-MYDGF antibody (Cat#4916, 1:5,000) and HRP-conjugated goat anti-rabbit secondary antibody (Cat#201, 1:20,000) respectively. Image was developed using NaQ™ ECL Substrate Kit (Cat#716).